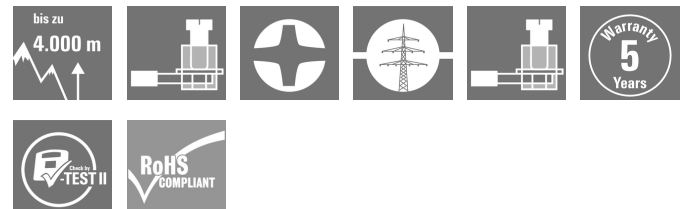


**VPU AC I 1+1 R 440/25 LCF****Weidmüller Interface GmbH & Co. KG**

Klingenbergstraße 26

D-32758 Detmold

Germany

[www.weidmueller.com](http://www.weidmueller.com)

Weidmüller VPU I (Type I), VPU II (Type II) and VPU III (Type III) surge protection products effectively reduce the interference coupling that can occur due to transient surge voltages, even significantly below the limits prescribed by insulation co-ordination according to EN 60664-3 / DIN VDE 0110-3. This means that the whole installation is exposed to fewer malfunctions. The arresters are co-ordinated using technical means. This means that decoupling between Types I, II and III is unnecessary. The arresters are tested according to product standard IEC 61643-11 / DIN EN 61643-11 and can be installed in systems according to IEC 61643-12 / VDE 0675-6-12 and IEC 62305-4 / VDE 0185-4. This lightning and surge protection device is suited for installation in power supply systems. Weidmüller offers different products depending on the particular mains network type and voltage level. A special Type I and Type II protective device is even available for photovoltaic applications.

**General ordering data**

Version	Surge voltage arrester, Low voltage, Surge protection, with remote contact, Single-phase, TN, TN-S, TT, IT with N, IT without N
Order No.	<a href="#">2619220000</a>
Type	VPU AC I 1+1 R 440/25 LCF
GTIN (EAN)	4050118634655
Qty.	1 pc(s).
Replacement parts	<a href="#">2855300000</a>

## VPU AC I 1+1 R 440/25 LCF

Weidmüller Interface GmbH &amp; Co. KG

Klingenbergstraße 26

D-32758 Detmold

Germany

www.weidmueller.com

## Technical data

## Dimensions and weights

Depth	93 mm	Depth (inches)	3.661 inch
Height	104.5 mm	Height (inches)	4.114 inch
Width	72 mm	Width (inches)	2.835 inch
Net weight	25 g		

## Temperatures

Storage temperature	-40 °C...85 °C	Operating temperature	-40 °C...85 °C
Humidity	5 - 95% rel. humidity		

## Probability of failure

MTBF	15 a
------	------

## Connection data, remote alert

Connection type	Screw connection, plug-gable	Cross-section for connected wire, solid core, max.	1.5 mm <sup>2</sup>
Cross-section for connected wire, solid core, min.	0.14 mm <sup>2</sup>	Stripping length	8 mm

## General data

Colour	black	Design	Installation housing; 4TE, Insta IP 20
Operating altitude	≤ 2000 m	Optical function display	green = OK; red = arrester is defective - replace
Protection degree	IP20 in installed state	Rail	TS 35
Segment	Power distribution	Suitable for	Count-in installation (leakage current free)
UL 94 flammability rating	V-0	Version	Surge protection, with remote contact

## Insulation coordination acc. to EN 50178

Pollution severity	2	Surge voltage category	III
--------------------	---	------------------------	-----

## VPU AC I 1+1 R 440/25 LCF

Weidmüller Interface GmbH &amp; Co. KG

Klingenbergstraße 26

D-32758 Detmold

Germany

www.weidmueller.com

## Technical data

## Rated data IEC / EN

Discharge current $I_{\max}$ (8/20 $\mu$ s) N-PE	100 kA	Discharge current $I_{\max}$ (8/20 $\mu$ s) wire-PE	100 kA
Discharge current $I_n$ (8/20 $\mu$ s) N-PE	100 kA	Discharge current $I_n$ (8/20 $\mu$ s) wire-PE	25 kA
Energy coordination ( $\leq 10$ m)	Type I, Type II, Type III	Follow-on current extinguishing capability $I_{fi}$	Not available due for technical reasons
Frequency range, max.	60 Hz	Frequency range, min.	50 Hz
Fuse	250 A gL (if back up fuse > 250 A)	Leakage current at $U_n$	5 $\mu$ A
Lightning test current $I_{\text{imp}}$ (10/350 $\mu$ s) (L-PE)	25 kA	Lightning test current, $I_{\text{imp}}$ (10/350 $\mu$ s) (N-PE)	100 kA
Low voltage network	Single-phase, TN, TN-S, TT, IT with N, IT without N	Mains voltage	400 V / 690 V
Max. continuous voltage, $U_c$ (AC)	440 V	Max. continuous voltage, $U_c$ (N-PE)	440 V
Number of poles	2	Protection level $U_p$ at $I_N$ (L/N-PE)	$\leq 2.5$ kV
Protection level $U_p$ at $I_N$ (N-PE)	$\leq 2.5$ kV	Rated load current $I_L$	100 A
Rated voltage (AC)	400 V	Requirements category acc. to IEC 61643-11	Type I, Type II
Requirements class, acc. to EN 61643-11	T1, T2	Response time	$\leq 25$ ns, $\leq 100$ ns
Short-circuit current rating $I_{\text{SCCR}}$	50 kA	Signalling contact	250 V 1A 1CO
Standards	IEC61643-11, EN61643-11	Suitable for	Count-in installation (leakage current free)
Temporary surge voltage (over-voltage) - TOV	762 V	Voltage type	AC

## Connection data

Stripping length	13 mm	Wire connection method	Screw connection
Type of connection	Screw connection	Stripping length, rated connection	13 mm
Tightening torque, min.	2 Nm	Tightening torque, max.	3 Nm
Clamping range, rated connection	16 mm <sup>2</sup>	Clamping range, min.	6 mm <sup>2</sup>
Clamping range, max.	35 mm <sup>2</sup>	Wire cross-section, solid, min.	6 mm <sup>2</sup>
Wire cross-section, solid, max.	35 mm <sup>2</sup>	Wire connection cross section, finely stranded, min.	6 mm <sup>2</sup>
Wire connection cross section, finely stranded, max.	35 mm <sup>2</sup>	Conductor cross-section, flexible, AEH (DIN 46228-1), min.	6 mm <sup>2</sup>
Conductor cross-section, flexible, AEH (DIN 46228-1), max.	35 mm <sup>2</sup>	Connection cross-section, stranded, min.	6 mm <sup>2</sup>
Connection cross-section, stranded, max.	35 mm <sup>2</sup>		

## Guarantee

Time interval	5 years
---------------	---------

## Classifications

ETIM 6.0	EC000941	ETIM 7.0	EC000941
ETIM 8.0	EC000941	ETIM 9.0	EC000941
ECLASS 9.0	27-13-08-05	ECLASS 9.1	27-13-08-05
ECLASS 10.0	27-13-08-05	ECLASS 11.0	27-13-08-05
ECLASS 12.0	27-17-90-90	ECLASS 13.0	27-17-90-90

## VPU AC I 1+1 R 440/25 LCF

Weidmüller Interface GmbH &amp; Co. KG

Klingenbergstraße 26

D-32758 Detmold

Germany

[www.weidmueller.com](http://www.weidmueller.com)

## Technical data

## Important note

Product information	Only applicable to IT power systems where the earth on the distribution transformer is interconnected with the earth on the consumer side (RE=RA in Figure 44.A1 of IEC 60634-4-44:2018). For use in DC applications, please use the fuse of SIBA Type NH2XL aR/aSF DC 1500 V
Notes	Only applicable to IT power systems where the earth on the distribution transformer is interconnected with the earth on the consumer side (RE=RA in Figure 44.A1 of IEC 60364-4-44:2018).

## Approvals

Approvals



ROHS

Conform

## Downloads

Approval/Certificate/Document of Conformity	<a href="#">EU_Konformitätserklärung / EU_Declaration_of_Conformity</a>
Engineering Data	<a href="#">CAD data – STEP</a>
Catalogues	<a href="#">Catalogues in PDF-format</a>

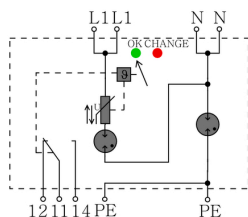
## VPU AC I 1+1 R 440/25 LCF

**Weidmüller Interface GmbH & Co. KG**  
Klingenbergstraße 26  
D-32758 Detmold  
Germany

[www.weidmueller.com](http://www.weidmueller.com)

## Drawings

### Electric symbol



Schematic circuit diagram

## VPU AC I 1+1 R 440/25 LCF

**Weidmüller Interface GmbH & Co. KG**

Klingenbergstraße 26

D-32758 Detmold

Germany

[www.weidmueller.com](http://www.weidmueller.com)

## Replacement parts

### VPU Series



Extensive accessories round off the product range

### General ordering data

Type	PLUG VPU AC
Order No.	<a href="#">2855300000</a>
GTIN (EAN)	4064675533283
Qty.	10 pc(s).

## VPU AC I 1+1 R 440/25 LCF

Weidmüller Interface GmbH &amp; Co. KG

Klingenbergstraße 26

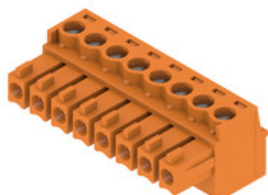
D-32758 Detmold

Germany

www.weidmueller.com

## Accessories

## BCZ 3.81/180



Female socket connectors with clamping-yoke screw system for connecting wires.

Three wire-outlet directions are available and provide flexible connection-level design options:

- 180° wire parallel to plugging direction
- 90° wire perpendicular and above plugging direction
- 270° wire perpendicular and below plugging direction

There are three housing shapes, covering many different requirements, to choose from:

- Standard housing without flange
- Flange with screw (F)
- Flange featuring Weidmüller's patented release latch (LR) for lock-and-release latching with no strain and no tools needed.

Weidmüller's 3.81-mm-pitch (0.15 inch) plug-in connectors are compatible with the layouts of customary connectors and offer space for labelling and coding.

## General ordering data

Type	BCZ 3.81/03/180 SN BK BX	Version	Product data	Packaging
Order No.	<a href="#">1792780000</a>	PCB plug-in connector, female plug, 3.81 mm, Number of poles: 3,	IEC: 320 V / 17.5 A / 0.2 - 1.5 mm <sup>2</sup>	Box
GTIN (EAN)	4032248226764	180°, Clamping yoke connection, Clamping range, max. : 1.5 mm <sup>2</sup> ,	UL: 300 V / 10 A / AWG 28 - AWG 16	
Qty.	50 pc(s).	Box		

## Crosshead screwdriver Phillips



VDE insulated crosshead screwdriver, for Phillips screws, SDIK PH DIN 7438, ISO 8764/2-PH, output to ISO 8764-PH, SoftFinish grip

## General ordering data

Type	SDIK PH1 X 80	Version
Order No.	<a href="#">2749890000</a>	Screwdriver, Blade width (B): 1 mm, 80 mm, Blade thickness (A): 1
GTIN (EAN)	4050118897098	
Qty.	1 pc(s).	

**VPU AC I 1+1 R 440/25 LCF**

**Weidmüller Interface GmbH & Co. KG**  
Klingenbergstraße 26  
D-32758 Detmold  
Germany

[www.weidmueller.com](http://www.weidmueller.com)

**Accessories****Blank**

ESG is the tried-and-tested marker in MultiCard format for use on many well-known electrical devices. The result is high-quality device marking with a high-contrast appearance.

Various types are available for devices from manufacturers like Siemens, ABB, Beckhoff etc.

Advantages at a glance:

- Tags for universal usage, self-adhesive or clip-on tags, depending on type
- For aligned equipment, e.g. circuit breakers, we supply ESG markers for clipping onto tag rails
- Individual laser-quality printing according to specifications

**For custom printing:** Please send us a file of our labeling software M-Print PRO or M-Print PRO Online (without installation) for your labeling specifications.

**General ordering data**

Type	ESG 6/15 K MC NE WS	Version
Order No.	<a href="#">1880100000</a>	ESG, Device markers x 15 mm, PA 66, Colour: white, Self-adhesive
GTIN (EAN)	4032248478781	
Qty.	200 pc(s).	