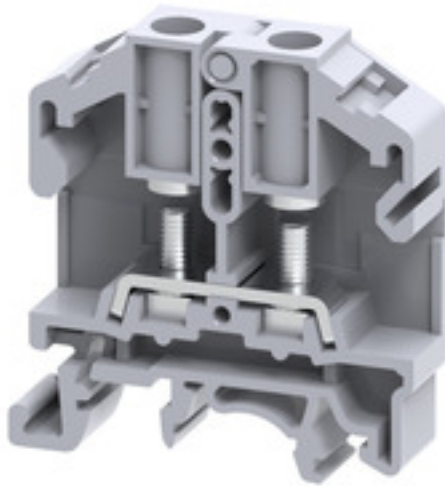


SRL 4**Weidmüller Interface GmbH & Co. KG**

Klingenbergstraße 26

D-32758 Detmold

Germany

www.weidmueller.com**Product image**

Our SRL terminals are best suited for applications where connections are subjected to strong vibrations. The wire to be connected is first crimped onto a ring or fork eyelet and then attached to the busbar of the terminal block. The fixing nuts remain captive in the hinged plastic carrier. For connection, the plastic carrier is lifted, the conductor is inserted with the eyelet, and the plastic carrier returned to its initial position. The fixing nut is tightened with a simple screwdriver to create a secure connection between terminal block and eyelet.

General ordering data

Version	Stud terminal, Threaded stud connection, 6 mm ² , 1000 V, 41 A, Number of connections: 2, M 4, TS 35, TS 32, grey
Order No.	2614940000
Type	SRL 4
GTIN (EAN)	4050118654035
Qty.	50 pc(s).

SRL 4

Weidmüller Interface GmbH & Co. KG

Klingenbergstraße 26

D-32758 Detmold

Germany

www.weidmueller.com

Technical data

Dimensions and weights

Depth	51.5 mm	Depth (inches)	2.028 inch
Depth including DIN rail	52.2 mm	Height	48.5 mm
Height (inches)	1.909 inch	Width	11 mm
Width (inches)	0.433 inch	Net weight	11 g

Temperatures

Storage temperature	-25 °C...55 °C	Continuous operating temp., min.	-50 °C
Continuous operating temp., max.	120 °C		

Material data

Material	Polyamide	Colour	grey
----------	-----------	--------	------

System specifications

End cover plate required	Yes	Number of potentials	1
Number of levels	1	Number of clamping points per level	2
Number of potentials per tier	1	Levels cross-connected internally	No
PE connection	No	Rail	TS 35, TS 32
N-function	No	PE function	No
PEN function	No		

Additional technical data

Explosion-tested version	No	Open sides	right
Snap-on	Yes	Type of fixing	Snap-on
Type of mounting	Snap-on		

CSA rating data

Certificate number (cCSAus)	70198654	Wire cross section max. (cCSAusX)	8 AWG
Wire cross section min. (cCSAusX)	22 AWG		

Conductors for clamping (rated connection)

2 x cable lugs DIN 46 234	1.5...6 mm ²	2 x cable lugs DIN 46 235	1.5...6 mm ²
Cable lug to DIN 46234	1.5...6 mm ²	Cable lug to DIN 46235	1.5...6 mm ²
Clamping range, bolted connection , max.	6 mm ²	Clamping range, bolted connection , min.	1.5 mm ²
Connection cross-section, stranded, max.	6 mm ²	Connection cross-section, stranded, min.	1.5 mm ²
Connection direction	on side	Number of connections	2
Stud size for spade connection	M 4	Tightening torque, max.	0.5 Nm
Tightening torque, min.	0.5 Nm	Type of connection	Threaded stud connection
Wire connection cross section AWG, max.	AWG 8	Wire connection cross section AWG, min.	AWG 22
Wire connection cross-section, solid core, max.	6 mm ²	Wire connection cross-section, solid core, min.	1.5 mm ²

General

Rail	TS 35, TS 32	Standards	IEC 60947-7-1
Wire connection cross section AWG, max.	AWG 8	Wire connection cross section AWG, min.	AWG 22

Creation date May 23, 2024 9:48:51 AM CEST

SRL 4

Weidmüller Interface GmbH & Co. KG

Klingenbergstraße 26

D-32758 Detmold

Germany

www.weidmueller.com

Technical data

Rating data

Rated cross-section	6 mm ²	Rated voltage	1,000 V
Rated DC voltage	1,000 V	Rated current	41 A
Standards	IEC 60947-7-1	Volume resistance according to IEC 60947-7-x	0.78 mΩ
Rated impulse withstand voltage	8 kV	Power loss in accordance with IEC 60947-7-x	1.31 W
Pollution severity	3	Surge voltage category	III

UL rating data

Certificate No. (cURus)	E60693	Conductor size Factory wiring max. (cURus)	8 AWG
Conductor size Factory wiring min. (cURus)	22 AWG	Conductor size Field wiring max. (cURus)	8 AWG
Conductor size Field wiring min. (cURus)	22 AWG	Current size B (cURus)	50 A
Current size C (cURus)	50 A	Voltage size B (cURus)	600 V
Voltage size C (cURus)	600 V		

Classifications

ETIM 6.0	EC000897	ETIM 7.0	EC000897
ETIM 8.0	EC000897	ETIM 9.0	EC000897
ECLASS 9.0	27-14-11-20	ECLASS 9.1	27-14-11-20
ECLASS 10.0	27-14-11-20	ECLASS 11.0	27-14-11-20
ECLASS 12.0	27-14-11-20	ECLASS 13.0	27-25-01-01

Approvals

Approvals



ROHS	Conform
UL File Number Search	UL Website
Certificate No. (cURus)	E60693

Downloads

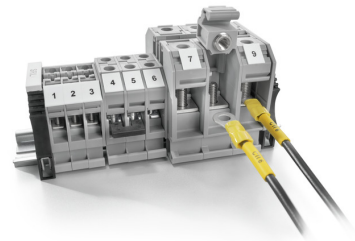
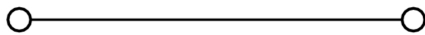
Approval/Certificate/Document of Conformity	CE Declaration of Conformity UKCA declaration of conformity
Engineering Data	CAD data – STEP
User Documentation	StorageConditionsTerminalBlocks
Catalogues	Catalogues in PDF-format

SRL 4

Weidmüller Interface GmbH & Co. KG
Klingenbergstraße 26
D-32758 Detmold
Germany

www.weidmueller.com

Drawings



SRL 4

Weidmüller Interface GmbH & Co. KG

Klingenbergstraße 26

D-32758 Detmold

Germany

www.weidmueller.com

Accessories

SRL-Series

SRL
Series

End plates are fitted to the open side of the last modular terminal before the end bracket. The use of an end plate ensures the function of the modular terminal and the specified rated voltage. It guarantees protection against contact with live parts and makes the final terminal finger-proof.

General ordering data

Type	SEP SRL 4	Version
Order No.	261500000	End plate (terminals), 46 mm x 1.5 mm
GTIN (EAN)	4050118653977	
Qty.	50 pc(s).	

SRL-Series

SRL
Series

Screwable cross-connections are easy to mount and de mount. Thanks to the big contact surface, even high currents can be transmitted with maximum contact reliability.

General ordering data

Type	SRQB 4/3	Version
Order No.	2615230000	Cross-connector (terminal), when screwed in, Number of poles: 3,
GTIN (EAN)	4050118653656	Pitch in mm (P): 11.00, Insulated: Yes, 41 A, black
Qty.	50 pc(s).	
Type	SRQB 4/2	Version
Order No.	2615220000	Cross-connector (terminal), when screwed in, Number of poles: 2,
GTIN (EAN)	4050118653663	Pitch in mm (P): 11.00, Insulated: Yes, 41 A, black
Qty.	100 pc(s).	
Type	SQB 4/3	Version
Order No.	2615150000	Cross-connector (terminal), when screwed in, Number of poles: 3,
GTIN (EAN)	4050118653830	Pitch in mm (P): 11.00, Insulated: Yes, 41 A, black
Qty.	50 pc(s).	
Type	SRQB 4/4	Version
Order No.	2615240000	Cross-connector (terminal), when screwed in, Number of poles: 4,
GTIN (EAN)	4050118653649	Pitch in mm (P): 11.00, Insulated: Yes, 41 A, black
Qty.	50 pc(s).	
Type	SQB 4/2	Version
Order No.	2615140000	Cross-connector (terminal), when screwed in, Number of poles: 2,
GTIN (EAN)	4050118653847	Pitch in mm (P): 11.00, Insulated: Yes, 41 A, black
Qty.	100 pc(s).	

SRL 4

Weidmüller Interface GmbH & Co. KG

Klingenbergstraße 26

D-32758 Detmold

Germany

www.weidmueller.com

Accessories

Type	SQB 4/4	Version
Order No.	2615160000	Cross-connector (terminal), when screwed in, Number of poles: 4,
GTIN (EAN)	4050118653823	Pitch in mm (P): 11.00, Insulated: Yes, 41 A, black
Qty.	50 pc(s).	

Blank



WS markers are the perfect match for the W-series connectors. Thanks to their system compatibility, the WS tags can also be used with the I-series and the Z-series. The large marking surfaces do not only permit long character strings but also multi-line text. WS markers are ideal for labels with long, customised character strings. Thanks to the proven MultiCard format, printing with PrintJet CONNECT oder/or Plotter is possible.

- Can be fitted in strips or individually
- Markers in proven MultiCard format

For custom printing: Please send us a file of our labeling software M-Print PRO or M-Print PRO Online (without installation) for your labeling specifications.

General ordering data

Type	WS 12/9.5-11 MC NE WS	Version
Order No.	2484220000	, Polyamide 66, Colour: white
GTIN (EAN)	4050118494808	
Qty.	300 pc(s).	

Crimp cable lugs



Insulated cable connector in PVC or PC/PA

- Conventional designs
- Not soldered
- With conical entry funnel, except for joint connector

General ordering data

Type	KQI-M4/-2,5	Version
Order No.	1492290000	cable lug, terminal end, Insulated cable connector, 2.5 mm ² , 1.5 mm ² -
GTIN (EAN)	4050118302172	2.5 mm ²
Qty.	100 pc(s).	
Type	KQI-M4/-6	Version
Order No.	1492370000	cable lug, terminal end, Insulated cable connector, 6 mm ² , 4 mm ² - 6
GTIN (EAN)	4050118302264	mm ²
Qty.	100 pc(s).	

SRL 4**Weidmüller Interface GmbH & Co. KG**

Klingenbergstraße 26

D-32758 Detmold

Germany

www.weidmueller.com**Accessories**

Type	KQI-M4/-0,5	Version
Order No.	1492110000	cable lug, terminal end, Insulated cable connector, 0.5 mm ² , 0.1 mm ² -
GTIN (EAN)	4050118302103	0.5 mm ²
Qty.	100 pc(s).	
Type	KQI-M4/-1	Version
Order No.	1492200000	cable lug, terminal end, Insulated cable connector, 1 mm ² , 0.5 mm ² - 1
GTIN (EAN)	4050118302301	mm ²
Qty.	100 pc(s).	