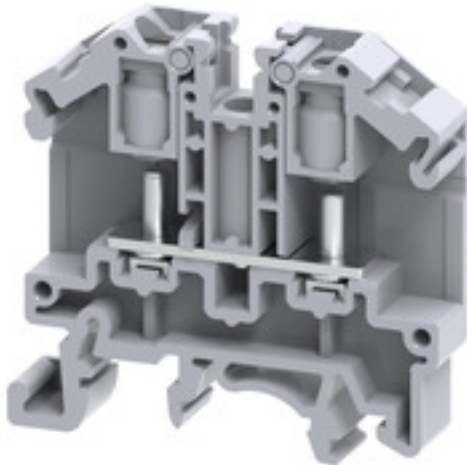


**SRL 3****Weidmüller Interface GmbH & Co. KG**

Klingenbergstraße 26

D-32758 Detmold

Germany

[www.weidmueller.com](http://www.weidmueller.com)**Product image**

Our SRL terminals are best suited for applications where connections are subjected to strong vibrations. The wire to be connected is first crimped onto a ring or fork eyelet and then attached to the busbar of the terminal block. The fixing nuts remain captive in the hinged plastic carrier. For connection, the plastic carrier is lifted, the conductor is inserted with the eyelet, and the plastic carrier returned to its initial position. The fixing nut is tightened with a simple screwdriver to create a secure connection between terminal block and eyelet.

**General ordering data**

Version	Stud terminal, Threaded stud connection, 6 mm <sup>2</sup> , 1000 V, 41 A, Number of connections: 2, M 3, TS 35, TS 32, grey
Order No.	<a href="#">2614930000</a>
Type	SRL 3
GTIN (EAN)	4050118654042
Qty.	100 pc(s).

## SRL 3

Weidmüller Interface GmbH &amp; Co. KG

Klingenbergstraße 26

D-32758 Detmold

Germany

www.weidmueller.com

## Technical data

## Dimensions and weights

Depth	47.3 mm	Depth (inches)	1.862 inch
Depth including DIN rail	47.25 mm	Height	49 mm
Height (inches)	1.929 inch	Width	9 mm
Width (inches)	0.354 inch	Net weight	15 g

## Temperatures

Storage temperature	-25 °C...55 °C	Continuous operating temp., min.	-50 °C
Continuous operating temp., max.	120 °C		

## Material data

Material	Polyamide	Colour	grey
----------	-----------	--------	------

## System specifications

End cover plate required	Yes	Number of potentials	1
Number of levels	1	Number of clamping points per level	2
Number of potentials per tier	1	Levels cross-connected internally	No
PE connection	No	Rail	TS 35, TS 32
N-function	No	PE function	No
PEN function	No		

## Additional technical data

Explosion-tested version	No	Open sides	right
Snap-on	Yes	Type of fixing	Snap-on
Type of mounting	Snap-on		

## CSA rating data

Certificate number (cCSAus)	70198655	Wire cross section max. (cCSAusX)	8 AWG
Wire cross section min. (cCSAusX)	22 AWG		

## Conductors for clamping (rated connection)

2 x cable lugs DIN 46 234	1.5...6 mm <sup>2</sup>	2 x cable lugs DIN 46 235	1.5...6 mm <sup>2</sup>
Cable lug to DIN 46234	1.5...6 mm <sup>2</sup>	Cable lug to DIN 46235	1.5...6 mm <sup>2</sup>
Clamping range, bolted connection , max.	6 mm <sup>2</sup>	Clamping range, bolted connection , min.	1.5 mm <sup>2</sup>
Connection cross-section, stranded, max.	6 mm <sup>2</sup>	Connection cross-section, stranded, min.	1.5 mm <sup>2</sup>
Connection direction	on side	Number of connections	2
Stud size for spade connection	M 3	Tightening torque, max.	0.5 Nm
Tightening torque, min.	0.5 Nm	Type of connection	Threaded stud connection
Wire connection cross section AWG, max.	AWG 8	Wire connection cross section AWG, min.	AWG 22
Wire connection cross-section, solid core, max.	6 mm <sup>2</sup>	Wire connection cross-section, solid core, min.	1.5 mm <sup>2</sup>

## General

Rail	TS 35, TS 32	Standards	IEC 60947-7-1
Wire connection cross section AWG, max.	AWG 8	Wire connection cross section AWG, min.	AWG 22

Creation date July 2, 2024 10:59:31 PM CEST

## SRL 3

Weidmüller Interface GmbH &amp; Co. KG

Klingenbergstraße 26

D-32758 Detmold

Germany

www.weidmueller.com

## Technical data

## Rating data

Rated cross-section	6 mm <sup>2</sup>	Rated voltage	1,000 V
Rated DC voltage	1,000 V	Rated current	41 A
Standards	IEC 60947-7-1	Volume resistance according to IEC 60947-7-x	0.78 mΩ
Rated impulse withstand voltage	8 kV	Power loss in accordance with IEC 60947-7-x	1.31 W
Pollution severity	3	Surge voltage category	III

## UL rating data

Certificate No. (cURus)	E60693	Conductor size Factory wiring max. (cURus)	8 AWG
Conductor size Factory wiring min. (cURus)	22 AWG	Conductor size Field wiring max. (cURus)	8 AWG
Conductor size Field wiring min. (cURus)	22 AWG	Current size B (cURus)	50 A
Current size C (cURus)	50 A	Voltage size B (cURus)	600 V
Voltage size C (cURus)	600 V		

## Classifications

ETIM 6.0	EC000897	ETIM 7.0	EC000897
ETIM 8.0	EC000897	ETIM 9.0	EC000897
ECLASS 9.0	27-14-11-20	ECLASS 9.1	27-14-11-20
ECLASS 10.0	27-14-11-20	ECLASS 11.0	27-14-11-20
ECLASS 12.0	27-14-11-20	ECLASS 13.0	27-25-01-01

## Environmental Product Compliance

REACH SVHC /

## Approvals

Approvals



ROHS	Conform
UL File Number Search	UL Website
Certificate No. (cURus)	E60693

## Downloads

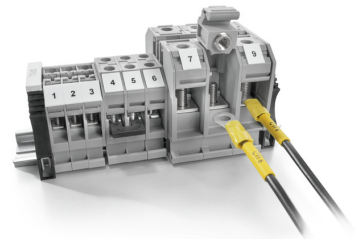
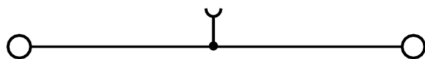
Approval/Certificate/Document of Conformity	<a href="#">CE Declaration of Conformity</a> <a href="#">UKCA declaration of conformity</a>
Engineering Data	<a href="#">CAD data – STEP</a>
User Documentation	<a href="#">StorageConditionsTerminalBlocks</a>
Catalogues	<a href="#">Catalogues in PDF-format</a>

## SRL 3

**Weidmüller Interface GmbH & Co. KG**  
Klingenbergstraße 26  
D-32758 Detmold  
Germany

[www.weidmueller.com](http://www.weidmueller.com)

## Drawings



## SRL 3

Weidmüller Interface GmbH &amp; Co. KG

Klingenbergstraße 26

D-32758 Detmold

Germany

www.weidmueller.com

## Accessories

## SRL-Series



Screwable cross-connections are easy to mount and de mount. Thanks to the big contact surface, even high currents can be transmitted with maximum contact reliability.

## General ordering data

Type	SQV 3/10	Version
Order No.	<a href="#">2615070000</a>	Cross-connector (terminal), when screwed in, Number of poles: 10,
GTIN (EAN)	4050118653915	Pitch in mm (P): 9.00, Insulated: No, 41 A, black, grey
Qty.	10 pc(s).	
Type	SQB 3/4	Version
Order No.	<a href="#">2615130000</a>	Cross-connector (terminal), when screwed in, Number of poles: 4,
GTIN (EAN)	4050118653854	Pitch in mm (P): 9.00, Insulated: Yes, 41 A, black
Qty.	50 pc(s).	
Type	SRQB 3/3	Version
Order No.	<a href="#">2615200000</a>	Cross-connector (terminal), when screwed in, Number of poles: 3,
GTIN (EAN)	4050118653687	Pitch in mm (P): 9.00, Insulated: Yes, 41 A, black
Qty.	50 pc(s).	
Type	SQB 3/3	Version
Order No.	<a href="#">2615120000</a>	Cross-connector (terminal), when screwed in, Number of poles: 3,
GTIN (EAN)	4050118653861	Pitch in mm (P): 9.00, Insulated: Yes, 41 A, black
Qty.	50 pc(s).	
Type	SRQB 3/2	Version
Order No.	<a href="#">2615190000</a>	Cross-connector (terminal), when screwed in, Number of poles: 2,
GTIN (EAN)	4050118653694	Pitch in mm (P): 9.00, Insulated: Yes, 41 A, black
Qty.	100 pc(s).	
Type	SQV 3/3	Version
Order No.	<a href="#">2615040000</a>	Cross-connector (terminal), when screwed in, Number of poles: 3,
GTIN (EAN)	4050118653939	Pitch in mm (P): 9.00, Insulated: No, 41 A, black, grey
Qty.	50 pc(s).	
Type	SRQB 3/4	Version
Order No.	<a href="#">2615210000</a>	Cross-connector (terminal), when screwed in, Number of poles: 4,
GTIN (EAN)	4050118653670	Pitch in mm (P): 9.00, Insulated: Yes, 41 A, black
Qty.	50 pc(s).	
Type	SQV 3/2	Version
Order No.	<a href="#">2615030000</a>	Cross-connector (terminal), when screwed in, Number of poles: 2,
GTIN (EAN)	4050118653946	Pitch in mm (P): 9.00, Insulated: No, 41 A, black, grey
Qty.	100 pc(s).	
Type	SQV 3/4	Version
Order No.	<a href="#">2615050000</a>	Cross-connector (terminal), when screwed in, Number of poles: 4,
GTIN (EAN)	4050118653922	Pitch in mm (P): 9.00, Insulated: No, 41 A, black, grey
Qty.	50 pc(s).	

## SRL 3

Weidmüller Interface GmbH &amp; Co. KG

Klingenbergstraße 26

D-32758 Detmold

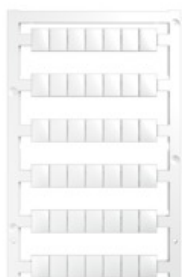
Germany

www.weidmueller.com

## Accessories

Type	SQB 3/2	Version
Order No.	<a href="#">2615110000</a>	Cross-connector (terminal), when screwed in, Number of poles: 2,
GTIN (EAN)	4050118653878	Pitch in mm (P): 9.00, Insulated: Yes, 41 A, black
Qty.	100 pc(s).	

## Blank



WS markers are the perfect match for the W-series connectors. Thanks to their system compatibility, the WS tags can also be used with the I-series and the Z-series. The large marking surfaces do not only permit long character strings but also multi-line text. WS markers are ideal for labels with long, customised character strings. Thanks to the proven MultiCard format, printing with PrintJet CONNECT oder/or Plotter is possible.

- Can be fitted in strips or individually
- Markers in proven MultiCard format

**For custom printing:** Please send us a file of our labeling software M-Print PRO or M-Print PRO Online (without installation) for your labeling specifications.

## General ordering data

Type	WS 10/8 PLUS MC NE WS	Version
Order No.	<a href="#">1905950000</a>	WS, Terminal marker, 10 x 8 mm, Pitch in mm (P): 8.00 Weidmueller,
GTIN (EAN)	4032248528103	white
Qty.	420 pc(s).	

## Crimp cable lugs



## Insulated cable connector in PVC or PC/PA

- Conventional designs
- Not soldered
- With conical entry funnel, except for joint connector

## General ordering data

Type	KQI-M3/-1	Version
Order No.	<a href="#">1492170000</a>	cable lug, terminal end, Insulated cable connector, 1 mm <sup>2</sup> , 0.5 mm <sup>2</sup> - 1 mm <sup>2</sup>
GTIN (EAN)	4050118302035	
Qty.	100 pc(s).	
Type	KQI-M3/-0,5	Version
Order No.	<a href="#">1492100000</a>	cable lug, terminal end, Insulated cable connector, 0.5 mm <sup>2</sup> , 0.1 mm <sup>2</sup> - 0.5 mm <sup>2</sup>
GTIN (EAN)	4050118302011	
Qty.	100 pc(s).	

**SRL 3****Weidmüller Interface GmbH & Co. KG**

Klingenbergstraße 26

D-32758 Detmold

Germany

[www.weidmueller.com](http://www.weidmueller.com)**Accessories**

Type	KQI-M3/-2,5	Version
Order No.	<a href="#">1492250000</a>	cable lug, terminal end, Insulated cable connector, 2.5 mm <sup>2</sup> , 1.5 mm <sup>2</sup> -
GTIN (EAN)	4050118302073	2.5 mm <sup>2</sup>
Qty.	100 pc(s).	

**SRL-Series**

**SRL**  
Series

End plates are fitted to the open side of the last modular terminal before the end bracket. The use of an end plate ensures the function of the modular terminal and the specified rated voltage. It guarantees protection against contact with live parts and makes the final terminal finger-proof.

**General ordering data**

Type	SEP SRL 3	Version
Order No.	<a href="#">2614990000</a>	End plate (terminals), 47 mm x 1.5 mm, grey
GTIN (EAN)	4050118653984	
Qty.	50 pc(s).	