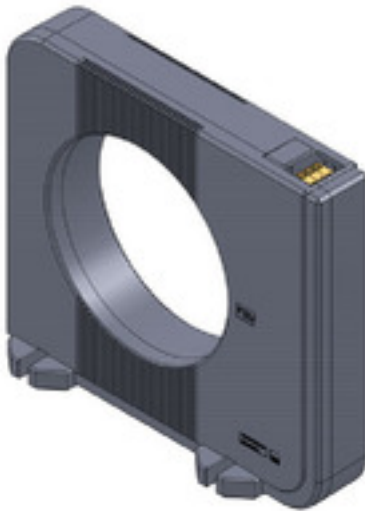


**CMA-RCM-DACT-120****Weidmüller Interface GmbH & Co. KG**

Klingenbergstraße 26

D-32758 Detmold

Germany

[www.weidmueller.com](http://www.weidmueller.com)**Similar to illustration****Difference current transformer** (Residual current monitoring, RCM)

This type is specialised in the detection of residual currents in 3 / 4-wire AC networks.

Its special features are:

Highly sensitive current sensor for the detection of even the smallest residual currents, fixed switching hysteresis of 5%, high safety thanks to integrated overvoltage protection and coverage of a wide frequency range.

**General ordering data**

Version	Residual current transformer, Primary current: 25 A, Round conductor: 120.00 mm, closed current transformer
Order No.	<a href="#">2603450000</a>
Type	CMA-RCM-DACT-120
GTIN (EAN)	4050118665406
Qty.	1 pc(s).
Local product	Only available in certain countries
Manufacturer	MBS AG

Creation date June 6, 2024 4:17:33 PM CEST

Catalogue status 01.06.2024 / We reserve the right to make technical changes.

## CMA-RCM-DACT-120

Weidmüller Interface GmbH &amp; Co. KG

Klingenbergstraße 26

D-32758 Detmold

Germany

www.weidmueller.com

## Technical data

## General ordering data

Local product	Only available in certain countries
---------------	-------------------------------------

## Dimensions and weights

Depth	37 mm	Depth (inches)	1.457 inch
Height	191.5 mm	Height (inches)	7.539 inch
Width	210 mm	Width (inches)	8.268 inch
Net weight	240 g		

## Temperatures

Storage temperature	-25 °C...70 °C	Operating temperature	-10 °C...70 °C
---------------------	----------------	-----------------------	----------------

## Measuring current input

Residual current measuring	Yes
----------------------------	-----

## Dimensions of live conductors

Type of conductor	Insulated conductor only	Round conductor	120 mm
Installation location	Indoor use		

## Electrical attributes

Frequency band	30 Hz...3 kHz	Load	0 VA
Primary current	25 A	Secondary current	0...0.04 A
Tolerance class	1	Transmission ratio	1:600

## Technical properties

Coil resistance	8 Ω	Measurement accuracy	Class 1 (IEC 6206-21)
Protection degree	IP40		

## Input

Input measurement range	0.02...2 A / 0.25...25 A depending on terminal assignment
-------------------------	--

## Insulation coordination

Galvanic isolation	yes	Impulse withstand voltage	8 kV
Pollution severity	3	Rated voltage	800 V
Standard	EN 60044/1	Tolerance class	1

## Classifications

ETIM 6.0	EC002048	ETIM 7.0	EC002048
ETIM 8.0	EC002048	ETIM 9.0	EC002048
ECLASS 9.0	27-21-09-02	ECLASS 9.1	27-21-09-02
ECLASS 10.0	27-21-09-02	ECLASS 11.0	27-21-09-02
ECLASS 12.0	27-21-09-02	ECLASS 13.0	27-21-09-02

## CMA-RCM-DACT-120

**Weidmüller Interface GmbH & Co. KG**  
Klingenbergstraße 26  
D-32758 Detmold  
Germany

[www.weidmueller.com](http://www.weidmueller.com)

## Technical data

### Approvals

ROHS	Conform
------	---------

### Downloads

User Documentation	<a href="#">Device description – Instruction sheet</a>
Catalogues	<a href="#">Catalogues in PDF-format</a>

## CMA-RCM-DACT-120

**Weidmüller Interface GmbH & Co. KG**  
Klingenbergstraße 26  
D-32758 Detmold  
Germany

[www.weidmueller.com](http://www.weidmueller.com)

## Drawings

### Dimensional drawing

