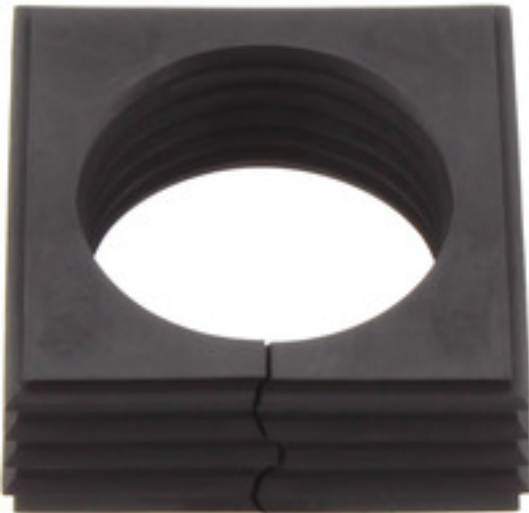


CABTITE SE 32-33 LRG BK**Weidmüller Interface GmbH & Co. KG**

Klingenbergstraße 26

D-32758 Detmold

Germany

www.weidmueller.com**Similar to illustration**

Whether a large or small cable diameter – Cabtite always offers the right seal insert.

The conical shape of the sealing elements allows the previously positioned snap-in grid inlays to be pushed in easily from the inside to the outside. It reliably seals intermediate spaces and provides strain relief in accordance with DIN EN 62444. The seal inserts combined with the frames achieve an IP 66 degree of protection. As a result of its slotted design with wave cut, it is especially suitable for pre-assembled cables.

- The black seal inserts are designed for a particularly high operating temperature and offer fire safety class UL 94 HB
- The grey sealing elements comply with fire safety class UL 94 V0 and are therefore suitable for the demands of the railway industry
- By using multiple inserts, two or more cables, as well as special cables, can be passed through a sealing element

General ordering data

Version	Sealing element, Cabtite (cable entry system), TPE, Deep black, Height: 42.8 mm, Width: 42.8 mm, Depth: 17.7 mm, -40 °C...120 °C, IP66
Order No.	2583630000
Type	CABTITE SE 32-33 LRG BK
GTIN (EAN)	4050118616880
Qty.	10 pc(s).

CABTITE SE 32-33 LRG BK

Weidmüller Interface GmbH & Co. KG

Klingenbergstraße 26

D-32758 Detmold

Germany

www.weidmueller.com

Technical data

Dimensions and weights

Depth	17.7 mm	Depth (inches)	0.697 inch
Height	42.8 mm	Height (inches)	1.685 inch
Width	42.8 mm	Width (inches)	1.685 inch
Net weight	17 g		

Temperatures

Operating temperature	-40 °C...120 °C
-----------------------	-----------------

General information

Halogen	No	Material	TPE
Outer cable diameter, max.	33 mm	Outer cable diameter, min.	32 mm
Protection degree	IP66	Sealing element	1 large sealing element
Silicone	No	UL 94 flammability rating	HB

Classifications

ETIM 6.0	EC000879	ETIM 7.0	EC000879
ETIM 8.0	EC000879	ETIM 9.0	EC000879
ECLASS 9.0	27-14-44-21	ECLASS 9.1	27-14-44-21
ECLASS 10.0	27-14-44-21	ECLASS 11.0	27-14-44-21
ECLASS 12.0	27-14-08-07	ECLASS 13.0	27-14-08-07
ECLASS 14.0	27-14-08-07		

Environmental Product Compliance

REACH SVHC	/
RoHS Compliance Status	Compliant without exemption

Approvals

Approvals



ROHS	Conform
UL File Number Search	UL Website
Certificate No. (cURus)	E223801

Downloads

Approval/Certificate/Document of Conformity	EU Declaration of Conformity - Cable entry system
Engineering Data	CAD data – STEP
User Documentation	Cabtite Installation Instructions
Catalogues	Catalogues in PDF-format