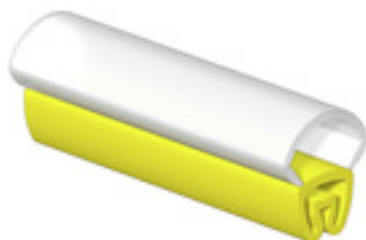


VT-TM 0/18 HF-V0**Weidmüller Interface GmbH & Co. KG**

Klingenbergstraße 26

D-32758 Detmold

Germany

www.weidmueller.com**General ordering data**

Version	, Socket x 5.3 mm, Polyester, TPU, Colour: yellow, Transparent, Conductor O.D.: 1.3 - 3 mm
Order No.	2571280000
Type	VT-TM 0/18 HF-V0
GTIN (EAN)	4050118608410
Qty.	200 pc(s).

VT-TM 0/18 HF-V0**Weidmüller Interface GmbH & Co. KG**

Klingenbergstraße 26

D-32758 Detmold

Germany

www.weidmueller.com**Technical data****Dimensions and weights**

Depth	6.15 mm	Depth (inches)	0.242 inch
Height	18 mm	Height (inches)	0.709 inch
Width	5.3 mm	Width (inches)	0.209 inch
Net weight	0.142 g		

Temperatures

Operating temperature range	-30...90 °C
-----------------------------	-------------

General data

Colour	yellow, Transparent	Halogen	No
Material	Polyester, TPU	Operating temperature range	-30...90 °C
Operating temperature range, max.	90 °C	Operating temperature range, min.	-30 °C
Printed characters	without	Recommended industries	Transportation, Machinery
Type of printing	neutral	UL 94 flammability rating	V-0
Width	5.3 mm		

Conductor and cable markers

Conductor O.D.	1.3 - 3 mm	Conductor O.D., max.	3 mm
Conductor O.D., min.	1.3 mm	Conductor cross-section, max.	0.5 mm ²
Conductor cross-section, min.	0.22 mm ²	Cross-section for connected wire	0.22 - 0.5 mm ²
Halogen	No		

Classifications

ETIM 6.0	EC001530	ETIM 7.0	EC001530
ETIM 8.0	EC001530	ETIM 9.0	EC001530
ECLASS 9.0	27-40-04-01	ECLASS 9.1	27-40-04-01
ECLASS 10.0	27-40-04-01	ECLASS 11.0	27-28-11-02
ECLASS 12.0	27-28-11-02	ECLASS 13.0	27-28-11-02

Approvals

ROHS	Conform
------	---------

Downloads

Catalogues	Catalogues in PDF-format
------------	--

VT-TM 0/18 HF-V0**Weidmüller Interface GmbH & Co. KG**

Klingenbergstraße 26

D-32758 Detmold

Germany

www.weidmueller.com**Accessories****TM-I 15****Process reliability: TM-I**

TM-I inlay tags have a guide tab which allows them to slide easily into the transparent sleeves from the type TM. Once the tag is in place, the tab is snapped off at the predetermined break point. The ready-assembled sleeves can then be simply pushed over the conductors. Your benefits: large quantities can be efficiently pre-assembled in a single step.

General ordering data

Type	TM-I 15 MM BL	Version
Order No.	2005910000	TM-I, Insert markers, 15 x 4 mm, blue
GTIN (EAN)	4050118390285	
Qty.	2,000 pc(s).	
Type	TM-I 15 MM WS	Version
Order No.	2005450000	TM-I, Insert markers, 15 x 4 mm, white
GTIN (EAN)	4050118390346	
Qty.	2,000 pc(s).	
Type	TM-I 15 MM RT	Version
Order No.	2005760000	TM-I, Insert markers, 15 x 4 mm, red
GTIN (EAN)	4050118390360	
Qty.	2,000 pc(s).	
Type	TM-I 15 MM GE	Version
Order No.	2005580000	TM-I, Insert markers, 15 x 4 mm, yellow
GTIN (EAN)	4050118390353	
Qty.	2,000 pc(s).	

VT-TM 0/18 HF-V0

Weidmüller Interface GmbH & Co. KG

Klingenbergstraße 26

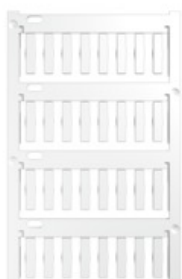
D-32758 Detmold

Germany

www.weidmueller.com

Accessories

Blank



TM-I is an acknowledged and accredited marker type for traffic engineering applications. There are various different tag lengths available for individual labelling with long character strings. Easy handling of separation and installation thanks to the project marker field. Pre-attachment of sleeves and retrofitting of tags offer excellent versatility

The special contour of TM-I allows easy assembly and secures firm positioning. They are compatible with a number of commercially available sleeves. Thanks to the MultiCard format, the tags can be printed quickly and conveniently with the PrintJet CONNECT, plotter or the STI pen.

- Easy handling of separation and installation thanks to the project marker field.
- Acknowledged and accredited marker for traffic engineering applications
- Pre-attachment of sleeves and retrofitting of tags offer excellent versatility
- Not suited for labelling with P-Ink or STI pen in connection with CLI T sleeves

For custom printing: Please send us a file of our labeling software M-Print PRO or M-Print PRO Online (without installation) for your labeling specifications.

General ordering data

Type	VT-TM-I 18 MC NE GE	Version
Order No.	1714101687	TM-I, Insert markers, 18 x 4 mm, yellow
GTIN (EAN)	4008190332532	
Qty.	640 pc(s).	
Type	VT-TM-I 18 MC NE GN	Version
Order No.	1714101688	TM-I, Insert markers, 18 x 4 mm, green
GTIN (EAN)	4008190332549	
Qty.	640 pc(s).	
Type	VT-TM-I 18 MC NE RT	Version
Order No.	1714101686	TM-I, Insert markers, 18 x 4 mm, red
GTIN (EAN)	4008190332525	
Qty.	640 pc(s).	
Type	VT-TM-I 18 MC NE BL	Version
Order No.	1714101693	TM-I, Insert markers, 18 x 4 mm, blue
GTIN (EAN)	4008190332556	
Qty.	640 pc(s).	
Type	VT-TM-I 18 MC NE GR	Version
Order No.	1798060000	TM-I, Insert markers, 18 x 4 mm, grey
GTIN (EAN)	4032248241040	
Qty.	640 pc(s).	
Type	TM-I 18 MC NE WS	Version
Order No.	1718431044	TM-I, Insert markers, 18 x 4 mm, white
GTIN (EAN)	4008190349011	
Qty.	320 pc(s).	

VT-TM 0/18 HF-V0**Weidmüller Interface GmbH & Co. KG**

Klingenbergstraße 26

D-32758 Detmold

Germany

www.weidmueller.com**Accessories**

Type	VT-TM-I 18 MC NE WS	Version
Order No.	1714101044	TM-I, Insert markers, 18 x 4 mm, white
GTIN (EAN)	4008190332518	
Qty.	640 pc(s).	
Type	VT-TM-I 18 MC NE OR	Version
Order No.	1714101690	TM-I, Insert markers, 18 x 4 mm, orange
GTIN (EAN)	4008190368623	
Qty.	640 pc(s).	
Type	TM-I 18 MC NE GE	Version
Order No.	1718431687	TM-I, Insert markers, 18 x 4 mm, yellow
GTIN (EAN)	4008190349028	
Qty.	320 pc(s).	
Type	TM-I 18 MC NE RT	Version
Order No.	1718431686	TM-I, Insert markers, 18 x 4 mm, red
GTIN (EAN)	4008190397449	
Qty.	320 pc(s).	
Type	TM-I 18 MC NE GN	Version
Order No.	1718431688	TM-I, Insert markers, 18 x 4 mm, green
GTIN (EAN)	4008190398699	
Qty.	320 pc(s).	