

**HDC MBUS CF 9.1****Weidmüller Interface GmbH & Co. KG**

Klingenbergstraße 26

D-32758 Detmold

Germany

[www.weidmueller.com](http://www.weidmueller.com)**Compact**

The new two-pole bus module is extremely compact and can accommodate both megabit and gigabit data inserts. It enables the connection of 2 Gigabit Cat 6A cables (10 gigabit) to one module.

**General ordering data**

Version	Accessories
Order No.	<a href="#">2566030000</a>
Type	HDC MBUS CF 9.1
GTIN (EAN)	4050118575873
Qty.	10 pc(s).

**HDC MBUS CF 9.1****Weidmüller Interface GmbH & Co. KG**

Klingenbergstraße 26

D-32758 Detmold

Germany

[www.weidmueller.com](http://www.weidmueller.com)**Technical data****Dimensions and weights**

Net weight	0.001 g
------------	---------

**General information on shielded sleeve**

Material	Brass		
Outer cable diameter	nominal		9.1 mm
	min.		8.6 mm
	max.		9.1 mm

**Classifications**

ETIM 6.0	EC002943	ETIM 7.0	EC002943
ETIM 8.0	EC002943	ETIM 9.0	EC002943
ECLASS 9.0	27-44-02-92	ECLASS 9.1	27-44-01-92
ECLASS 10.0	27-44-02-92	ECLASS 11.0	27-44-02-92
ECLASS 12.0	27-44-02-92	ECLASS 13.0	27-44-02-92

**Environmental Product Compliance**

REACH SVHC	Lead 7439-92-1
SCIP	6eabd5ae-2d6b-409e-8bdf-87c27ee10e40

**Approvals**

ROHS	Conform
------	---------

**Downloads**

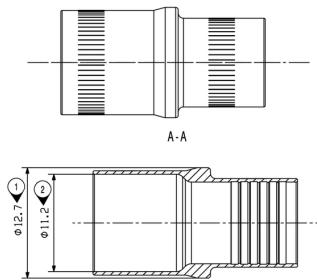
Engineering Data	<a href="#">CAD data – STEP</a>
Catalogues	<a href="#">Catalogues in PDF-format</a>

## HDC MBUS CF 9.1

**Weidmüller Interface GmbH & Co. KG**  
Klingenbergstraße 26  
D-32758 Detmold  
Germany

[www.weidmueller.com](http://www.weidmueller.com)

## Drawings



## HDC MBUS CF 9.1

Weidmüller Interface GmbH &amp; Co. KG

Klingenbergstraße 26

D-32758 Detmold

Germany

[www.weidmueller.com](http://www.weidmueller.com)

## Accessories

## Tools

**Compact**

The new two-pole bus module is extremely compact and can accommodate both megabit and gigabit data inserts. It enables the connection of 2 Gigabit Cat 6A cables (10 gigabit) to one module.

## General ordering data

Type	HDC MBUS CI B 8.0-9.1	Version
Order No.	<a href="#">2592720000</a>	Crimping tool insert
GTIN (EAN)	4050118603927	
Qty.	1 pc(s).	
Type	HDC MBUS CT B 8.0-9.1	Version
Order No.	<a href="#">2592710000</a>	Pressing tool
GTIN (EAN)	4050118603910	
Qty.	1 pc(s).	