

HDC MBUS CF 11.0**Weidmüller Interface GmbH & Co. KG**

Klingenbergstraße 26

D-32758 Detmold

Germany

www.weidmueller.com**Compact**

The new two-pole bus module is extremely compact and can accommodate both megabit and gigabit data inserts. It enables the connection of 2 Gigabit Cat 6A cables (10 gigabit) to one module.

General ordering data

Version	Accessories
Order No.	2566000000
Type	HDC MBUS CF 11.0
GTIN (EAN)	4050118575712
Qty.	10 pc(s).

HDC MBUS CF 11.0**Weidmüller Interface GmbH & Co. KG**

Klingenbergstraße 26

D-32758 Detmold

Germany

www.weidmueller.com**Technical data****Dimensions and weights**

Net weight	0.001 g
------------	---------

General information on shielded sleeve

Material	Brass		
Outer cable diameter	max.	11 mm	
	min.	10.4 mm	
	nominal	11 mm	

Classifications

ETIM 6.0	EC002943	ETIM 7.0	EC002943
ETIM 8.0	EC002943	ETIM 9.0	EC002943
ECLASS 9.0	27-44-02-92	ECLASS 9.1	27-44-01-92
ECLASS 10.0	27-44-02-92	ECLASS 11.0	27-44-02-92
ECLASS 12.0	27-44-02-92	ECLASS 13.0	27-44-02-92

Environmental Product Compliance

REACH SVHC	Lead 7439-92-1
SCIP	6eabd5ae-2d6b-409e-8bdf-87c27ee10e40

Approvals

ROHS	Conform
------	---------

Downloads

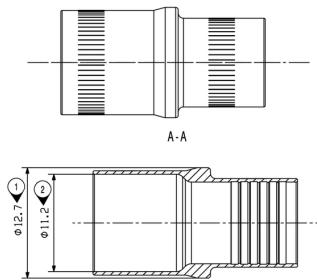
Engineering Data	CAD data – STEP
Catalogues	Catalogues in PDF-format

HDC MBUS CF 11.0

Weidmüller Interface GmbH & Co. KG
Klingenbergstraße 26
D-32758 Detmold
Germany

www.weidmueller.com

Drawings



HDC MBUS CF 11.0

Weidmüller Interface GmbH & Co. KG

Klingenbergstraße 26

D-32758 Detmold

Germany

www.weidmueller.com

Accessories

Tools

**Compact**

The new two-pole bus module is extremely compact and can accommodate both megabit and gigabit data inserts. It enables the connection of 2 Gigabit Cat 6A cables (10 gigabit) to one module.

General ordering data

Type	HDC MBUS CT C 6.8-7.9	Version
Order No.	2592730000	Pressing tool
GTIN (EAN)	4050118603934	
Qty.	1 pc(s).	
Type	HDC MBUS CI A 9.2-10.3	Version
Order No.	2592700000	Crimping tool insert
GTIN (EAN)	4050118603903	
Qty.	1 pc(s).	
Type	HDC MBUS CI B 8.0-9.1	Version
Order No.	2592720000	Crimping tool insert
GTIN (EAN)	4050118603927	
Qty.	1 pc(s).	
Type	HDC MBUS CT B 8.0-9.1	Version
Order No.	2592710000	Pressing tool
GTIN (EAN)	4050118603910	
Qty.	1 pc(s).	
Type	HDC MBUS CT A 9.2-10.3	Version
Order No.	2592690000	Pressing tool
GTIN (EAN)	4050118603798	
Qty.	1 pc(s).	
Type	HDC MBUS CI C 6.8-7.9	Version
Order No.	2592740000	Crimping tool insert
GTIN (EAN)	4050118603941	
Qty.	1 pc(s).	