

CH20M22 S PPSC AGY 3747**Weidmüller Interface GmbH & Co. KG**

Klingenbergstraße 26

D-32758 Detmold

Germany

www.weidmueller.com**Product image****Superior efficiency, flexibility and design - the "standard tailor-made fit"**

When selecting a housing design, flexibility is a key factor. Other important criteria are: scalability, customised design, innovative functionality and cost efficiency. You need a choice which offers the maximum performance with the minimum overhead.

The CH20M22 modular electronics housing is the standard format from amongst the different housing widths. It has the optimal width for most typical electronics applications.

The entire system is characterized by excellence: outstanding scalability and flexibility, a high security level, innovative application functionality and a variety of practical details.

- **Quicker installation** with features such as "Wire ready" the universal multi-tool screw head
- **User-friendly operations:** with clear and permanent labelling and extra marking possibilities, integrated release clip or transparent cover
- **Maximum interference immunity** with ESD-compliant construction featuring deeply overlapping module joint edges made from high-performance plastic
- **High operational reliability** with the unique Auto-Set coding system and featuring double-sided touch protection on the pin header and socket blocks

CH20M - a compact name for the most flexible system available on the market. It doesn't just stand for "Component Housing IP20 Modular".

CH20M also stands for efficiency and innovation throughout design, production and use.

General ordering data

Version	Modular housing, OMNIMATE Housing - series CH20M Agate grey, Side element, Width: 22.5 mm
Order No.	2554710000
Type	CH20M22 S PPSC AGY 3747
GTIN (EAN)	4050118565010
Qty.	10 pc(s).
Information regarding whole assembly, see referenced articles	1104450000

CH20M22 S PPSC AGY 3747**Weidmüller Interface GmbH & Co. KG**

Klingenbergstraße 26

D-32758 Detmold

Germany

www.weidmueller.com**Technical data****Dimensions and weights**

Depth	105.5 mm	Depth (inches)	4.154 inch
Height	22.8 mm	Height (inches)	0.898 inch
Width	22.5 mm	Width (inches)	0.886 inch
Net weight	8.8 g		

Temperatures

Operating temperature range	-40 °C... 120 °C	Humidity	5 - 93% rel. humidity, Tu = 40°C, no condensation
-----------------------------	------------------	----------	---

Material data

Comparative Tracking Index (CTI)	600 ≤ CTI	Insulating material	PA 66 GF 30
Insulating material group	I	UL 94 flammability rating	V-0

General data

Colour	Agate grey	Colour chart (similar)	RAL 7038
Encapsulation option	No	Protection degree	IP20 in installed state

Component properties

Cut out as preparation for functional port integrated	No	Number of connection levels	2
Number of poles, max.	8	Number of slots for female plugs	2
Number of ventilation openings	1		

Classifications

ETIM 7.0	EC001031	ETIM 8.0	EC001031
ETIM 9.0	EC001031	ECLASS 11.0	27-18-27-92
ECLASS 12.0	27-18-27-92	ECLASS 13.0	27-19-06-02

Environmental Product Compliance

REACH SVHC	/
RoHS Compliance Status	Compliant without exemption

Approvals

ROHS	Conform
------	---------

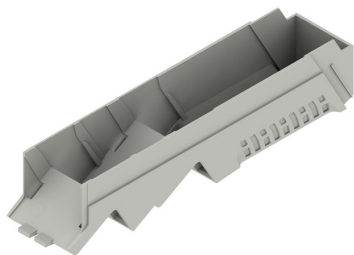
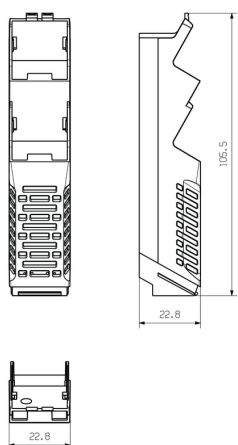
Downloads

Engineering Data	CAD data – STEP
Catalogues	Catalogues in PDF-format

CH20M22 S PPSC AGY 3747

Weidmüller Interface GmbH & Co. KG
Klingenbergstraße 26
D-32758 Detmold
Germany

www.weidmueller.com

Drawings**Product image****Product image****Dimensioned drawing**

CH20M22 S PPSC AGY 3747

Weidmüller Interface GmbH & Co. KG
 Klingenbergstraße 26
 D-32758 Detmold
 Germany

www.weidmueller.com

Accessories

CH20M AD SHL 5.00/04 - Side element cover for CH20M22, CH20M45, CH20M67

**The perfect platform for function and innovation:**

Innovative function electronics require intelligent "packages" in order to integrate perfectly in the system environment.

The ongoing development and consistent expansion of the Weidmüller electronics housing portfolio provides a secure platform for future electronics applications whatever the design or intended use. CAD data for PCBs is provided for all enclosures. Screw and tension clamp terminals are available for all connections.

The consistent synergy between design, connection system and functionality lays the perfect foundation stone for electronics systems designed in line with market and application requirements.

Function, shape and manufacturing quality combine into a single logical unit that provides maximum reliability and operating comfort for the user.

General ordering data

Type	CH20M AD SHL 5.00/04 GG ...	Version
Order No.	1413740000	Hood, OMNIMATE Housing - series CH20M Graphite grey, Side
GTIN (EAN)	4050118241648	element cover, Width: 22.5 mm
Qty.	50 pc(s).	
Type	CH20M AD SHL 5.00/04 AG ...	Version
Order No.	1472830000	Hood, OMNIMATE Housing - series CH20M Agate grey, Side element
GTIN (EAN)	4050118279429	cover, Width: 22.5 mm
Qty.	50 pc(s).	
Type	CH20M AD SHL 5.00/04 BK ...	Version
Order No.	1221310000	Hood, OMNIMATE Housing - series CH20M black, Side element cover,
GTIN (EAN)	4050118004830	Width: 22.5 mm
Qty.	50 pc(s).	
Type	CH20M AD SHL 5.00/04 LG ...	Version
Order No.	1432890000	Hood, OMNIMATE Housing - series CH20M Light Grey, Side element
GTIN (EAN)	4050118237641	cover, Width: 22.5 mm
Qty.	50 pc(s).	