

**SV-SMT 7.62HP/03/270G 2.6SN BK RL****Weidmüller Interface GmbH & Co. KG**

Klingenbergstraße 26

D-32758 Detmold

Germany

[www.weidmueller.com](http://www.weidmueller.com)**Product image****OMNIMATE Power BV / SV 7.62HP – the 28 kVA performance class****Tailor-made solutions for high performers**

More power reserves for higher load bearing capacity:  
The OMNIMATE Power BV / SV 7.62HP is the middle-class of the power connector systems. It has a large clamping capacity, high overload resistance and the largest range of variants and accessories to choose from: the high performer of the HP range. HP means High Performance – this performance covers a great deal: the full rated current up to 50°C without derating, unlimited 600-V approval according to UL, and the additional finger safety for 400 V-TN systems (+ 3.0 mm) in compliance with the application directive IEC 61800-5-1.

**General ordering data**

|              |   |
|--------------|---|
| Version      | PCB plug-in connector, male header, closed side, THT/THR solder connection, 7.62 mm, Number of poles: 3, 270°, Solder pin length (l): 2.6 mm, tinned, black, Tape |
| Order No.    | <a href="#">2546150000</a>  |
| Type         | SV-SMT 7.62HP/03/270G 2.6SN BK RL   |
| GTIN (EAN)   | 4050118556193   |
| Qty.         | 110 pc(s).  |
| Product data | IEC: 1000 V / 41 A<br>UL: 300 V / 40.5 A  |
| Packaging    | Tape  |

## SV-SMT 7.62HP/03/270G 2.6SN BK RL

Weidmüller Interface GmbH &amp; Co. KG

Klingenbergstraße 26

D-32758 Detmold

Germany

www.weidmueller.com

## Technical data

## Dimensions and weights

|                          |          |                 |            |
|--------------------------|----------|-----------------|------------|
| Depth                    | 28.3 mm  | Depth (inches)  | 1.114 inch |
| Height                   | 14 mm    | Height (inches) | 0.551 inch |
| Height of lowest version | 11.4 mm  | Width           | 22.86 mm   |
| Width (inches)           | 0.9 inch | Net weight      | 6 g        |

## System specifications

|   |                                      |  |  |
|---|--------------------------------------|--|--|
| Product family                                    | OMNIMATE Power - series BV/SV 7.62HP | Type of connection                           | Board connection                                     |
| Mounting onto the PCB                             | THT/THR solder connection            | Pitch in mm (P)                              | 7.62 mm  |
| Pitch in inches (P)                               | 0.3 "                                | Outgoing elbow                               | 270°   |
| Number of poles                                   | 3                                    | Number of solder pins per pole               | 2  |
| Solder pin length (l)                             | 2.6 mm                               | Solder pin length tolerance                  | +0.1 / -0.3 mm                                       |
| Solder pin dimensions                             | 0.8 x 1.0 mm                         | Solder eyelet hole diameter (D)              | 1.4 mm   |
| Solder eyelet hole diameter tolerance (D)+ 0,1 mm |                                      | L1 in mm                                     | 15.24 mm   |
| L1 in inches                                      | 0.6 "                                | Number of rows                               | 1  |
| Pin series quantity                               | 1                                    | Touch-safe protection acc. to DIN VDE 57 106 | safe to back of hand above the printed circuit board |
| Touch-safe protection acc. to DIN VDE 0470        | IP 20                                | Protection degree                            | IP20, when fully mounted                             |
| Volume resistance                                 | 2.00 mΩ                              | Plugging cycles                              | 25   |
| Plugging force/pole, max.                         | 12 N                                 | Pulling force/pole, max.                     | 7 N  |

## Material data

|                                       |                                |                                       |                                |
|---------------------------------------|--------------------------------|---------------------------------------|--------------------------------|
| Insulating material                   | PA 9T                          | Colour                                | black                          |
| Colour chart (similar)                | RAL 9011                       | Insulating material group             | I                              |
| Comparative Tracking Index (CTI)      | ≥ 600                          | Insulation strength                   | ≥ 10 <sup>8</sup> Ω            |
| Moisture Level (MSL)                  | 1                              | UL 94 flammability rating             | V-0                            |
| Contact material                      | Cu-alloy                       | Contact surface                       | tinned                         |
| Layer structure of solder connection  | 1...3 µm Ni / 4...6 µm Sn matt | Layer structure of plug contact       | 1...3 µm Ni / 4...6 µm Sn matt |
| Storage temperature, min.             | -40 °C                         | Storage temperature, max.             | 70 °C                          |
| Operating temperature, min.           | -50 °C                         | Operating temperature, max.           | 130 °C                         |
| Temperature range, installation, min. | -25 °C                         | Temperature range, installation, max. | 130 °C                         |

## Rated data acc. to IEC

|   |                        |   |                   |
|---|------------------------|---|-------------------|
| tested acc. to standard   | IEC 60664-1, IEC 61984 | Rated current, min. number of poles (Tu=20°C)                         | 41 A              |
| Rated current, max. number of poles (Tu=20°C)                             | 41 A                   | Rated current, min. number of poles (Tu=40°C)                         | 41 A              |
| Rated current, max. number of poles (Tu=40°C)                             | 41 A                   | Rated voltage for surge voltage class / pollution degree II/2         | 1,000 V           |
| Rated voltage for surge voltage class / pollution degree III/2            | 630 V                  | Rated voltage for surge voltage class / pollution degree III/3        | 630 V             |
| Rated impulse voltage for surge voltage class/ pollution degree II/2      | 6 kV                   | Rated impulse voltage for surge voltage class/ pollution degree III/2 | 6 kV              |
| Rated impulse voltage for surge voltage class/ contamination degree III/3 | 6 kV                   | Short-time withstand current resistance                               | 3 x 1s with 420 A |
| Clearance, min.   | 6.9 mm                 | Creepage distance, min.   | 9.6 mm            |

## SV-SMT 7.62HP/03/270G 2.6SN BK RL

Weidmüller Interface GmbH &amp; Co. KG

Klingenbergstraße 26

D-32758 Detmold

Germany

www.weidmueller.com

## Technical data

## Rated data acc. to UL 1059

Institute (cURus)



Certificate No. (cURus)

E60693

Rated voltage (Use group B / UL 1059) 300 V

Rated voltage (Use group D / UL 1059) 300 V

Rated current (Use group C / UL 1059) 40.5 A

Clearance distance, min. 6.9 mm

Reference to approval values Specifications are maximum values, details - see approval certificate.

Rated voltage (Use group C / UL 1059) 300 V

Rated current (Use group B / UL 1059) 40.5 A

Rated current (Use group D / UL 1059) 10 A

Creepage distance, min. 9.6 mm

## Packing

|                                      |          |                             |                               |
|--------------------------------------|----------|-----------------------------|-------------------------------|
| Packaging                            | Tape     | VPE length                  | 338 mm                        |
| VPE width                            | 130 mm   | VPE height                  | 33 mm                         |
| Tape depth (T2)                      | 15.8 mm  | Tape width (W)              | 56 mm                         |
| Tape pocket depth (K0)               | 15.3 mm  | Tape pocket height (A0)     | 28.4 mm                       |
| Tape pocket width (B0)               | 39.06 mm | Tape pocket separation (P1) | 36 mm                         |
| Tape hole separation (E)             | 1.75 mm  | Tape pocket separation (F)  | 26.2 mm                       |
| Tape reel diameter $\varnothing$ (A) | 330 mm   | Surface resistance          | $R_s = 10^9 - 10^{12} \Omega$ |

## Classifications

|             |             |             |             |
|-------------|-------------|-------------|-------------|
| ETIM 6.0    | EC002637    | ETIM 7.0    | EC002637    |
| ETIM 8.0    | EC002637    | ETIM 9.0    | EC002637    |
| ECLASS 9.0  | 27-44-04-02 | ECLASS 9.1  | 27-44-04-02 |
| ECLASS 10.0 | 27-44-04-02 | ECLASS 11.0 | 27-46-02-01 |
| ECLASS 12.0 | 27-46-02-01 | ECLASS 13.0 | 27-46-02-01 |

## Environmental Product Compliance

REACH SVHC

/

## Important note

IPC conformity

Conformity: The products are developed, manufactured and delivered according international recognized standards and norms and comply with the assured properties in the data sheet resp. fulfill decorative properties in accordance with IPC-A-610 "Class 2". Further claims on the products can be evaluated on request.

Notes

- Additional variants on request
- Rated current related to rated cross-section & min. No. of poles.
- P on drawing = pitch
- Rated data refer only to the component itself. Clearance and creepage distances to other components are to be designed in accordance with the relevant application standards.
- In accordance with IEC 61984, OMNIMATE-connectors are connectors without breaking capacity (COC). During designated use, connectors are not allowed to be engaged or disengaged when live or under load
- Long term storage of the product with average temperature of 50 °C and maximum humidity 70%, 36 months

**SV-SMT 7.62HP/03/270G 2.6SN BK RL****Weidmüller Interface GmbH & Co. KG**

Klingenbergstraße 26

D-32758 Detmold

Germany

[www.weidmueller.com](http://www.weidmueller.com)**Technical data****Approvals**

Approvals



UL File Number Search

UL Website

Certificate No. (cURus)

E60693

**Downloads**

Engineering Data

[CAD data – STEP](#)

Product Change Notification

[20220105 Material change SV-SMT 7.62](#)[20220105 Materialänderung SV-SMT](#)

Catalogues

[Catalogues in PDF-format](#)

## SV-SMT 7.62HP/03/270G 2.6SN BK RL

**Weidmüller Interface GmbH & Co. KG**  
 Klingenbergstraße 26  
 D-32758 Detmold  
 Germany

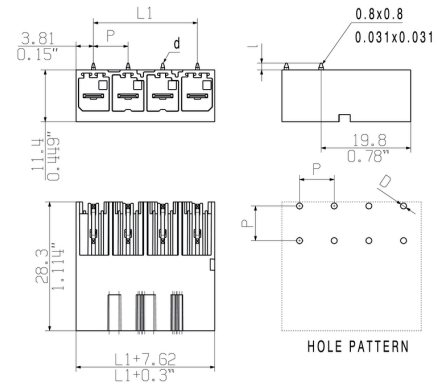
[www.weidmueller.com](http://www.weidmueller.com)

## Drawings

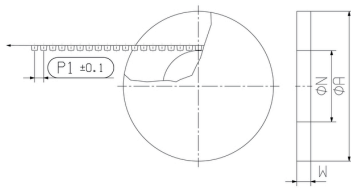
## Product image



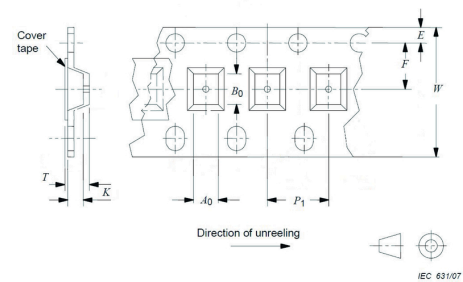
## Dimensional drawing



## Dimensional drawing



## Dimensional drawing



## SV-SMT 7.62HP/03/270G 2.6SN BK RL

Weidmüller Interface GmbH &amp; Co. KG

Klingenbergstraße 26

D-32758 Detmold

Germany

www.weidmueller.com

## Accessories

## Coding elements



**The pluggable connections for power electronics - optimised for modern drive technologies, e.g. motor starters, frequency converters and servo-controllers.**

OMNIMATE Power sets the new standard – with increased safety and innovative solutions such as the pluggable shield, integrated signal contacts and one-handed operation.

The three product lines offer you further advantages:

- Application-oriented scalability: from the compact 4 mm<sup>2</sup> connector for 29 A (IEC) or 20 A (UL) up to the sturdy 16 mm<sup>2</sup> connector for 76 A (IEC) or 54 A (UL)
- Unlimited usage up to 1,000 V (IEC) or 600 V (UL)
- A variety of application optimised mounting options

Our Service:

Design your individual connectors simply by using the

## General ordering data

| Type       | BV/SV 7.62HP KO            | Version   | Product data | Packaging |
|------------|----------------------------|---|--------------|-----------|
| Order No.  | <a href="#">1937590000</a> | PCB plug-in connector, Accessories, Coding element, black, Number |              | Box       |
| GTIN (EAN) | 4032248608881              | of poles: 1   |              |           |
| Qty.       | 50 pc(s).                  |   |              |           |

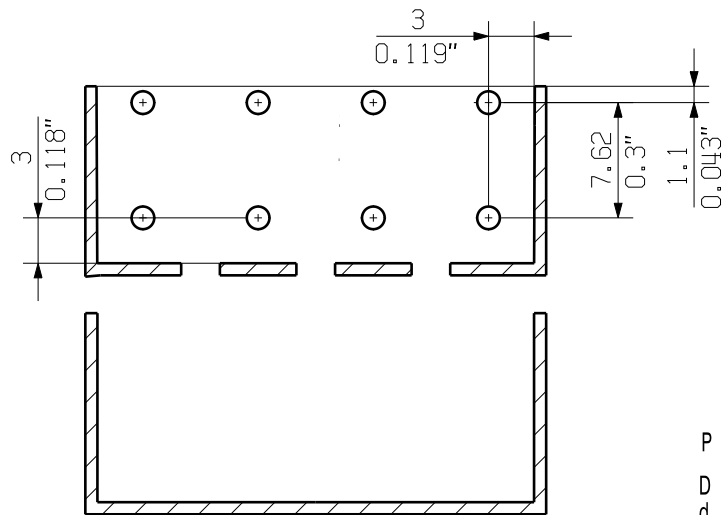
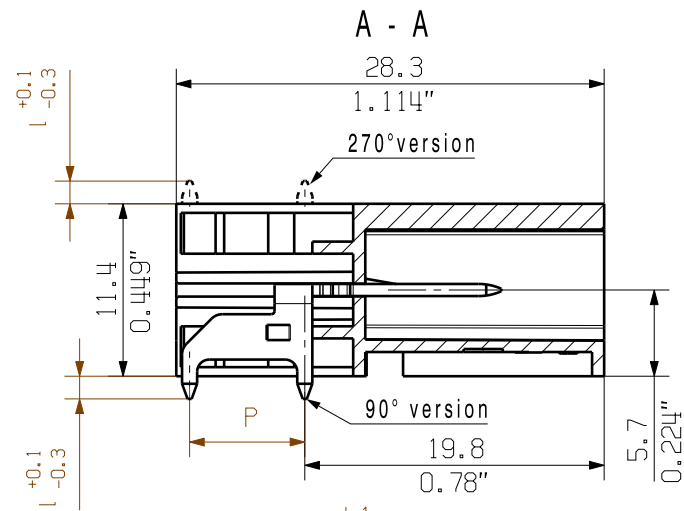
The reproduction, distribution and utilization of this document as well as the communication of its contents to others without explicit authorization is prohibited. Offenders will be held liable for the payment of damages. Weidmüller exclusively reserves the right to file for patents, utility models or designs.

© Weidmüller Interface GmbH & Co. KG

Dimensions without tolerances are no check dimensions

The English version is binding

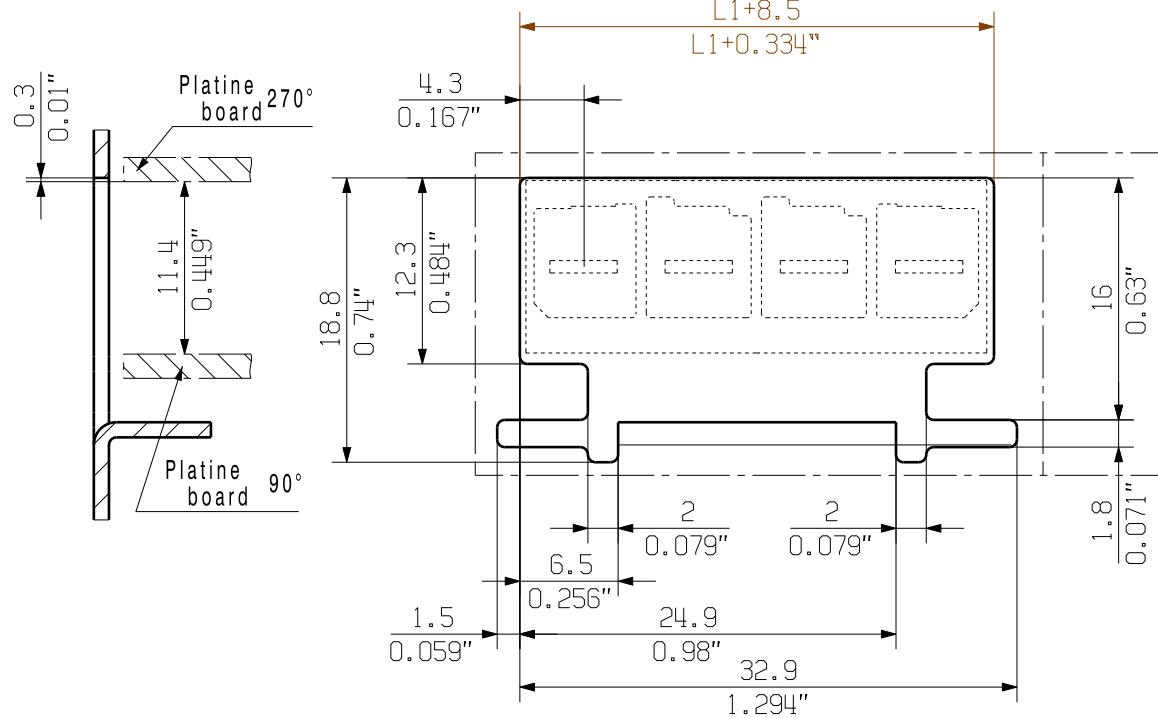
# SV-SMT 7.62HP/04/90/270G



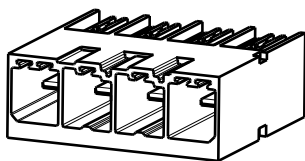
paste free area  
max. dimension

P = Raster / pitch 7.62  
D = Ø1.4+0.1/-0.05  
d = 0.8x1.0

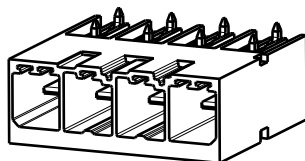
GENERAL TOLERANCE:  
DIN ISO 2768-m



SV-SMT 7.62HP/04/90G



SV-SMT 7.62HP/04/270G



For the mounting of PCBs, it should be noted that the rated data relates only to the PCB components alone. The necessary creepage and clearance paths must be observed in connection with the respective applicant in accordance to IEC 664 / VDE 0110. The current-carrying capacity and pitch tolerance is to be determined according to DIN IEC 326 part 3 very fine.

Weidmüller PCB components are tested to the DIN EN 61984 standard, and are valid for its field of application. Provided that the components are used to the intended purpose, all requirements with respect to the occurring of electrical, mechanical, thermic and corrosive stress will be satisfied.

|           |
|-----------|
| 1.5       |
| 2.6       |
| 3.5       |
| I<br>[mm] |

|             |            |              |
|-------------|------------|--------------|
| 12          | 83.82      | 3.3          |
| 11          | 76.20      | 3.0          |
| 10          | 68.58      | 2.7          |
| 9           | 60.96      | 2.4          |
| 8           | 53.34      | 2.1          |
| 7           | 45.72      | 1.8          |
| 6           | 38.10      | 1.5          |
| 5           | 30.48      | 1.2          |
| 4           | 22.86      | 0.9          |
| 3           | 15.24      | 0.6          |
| 2           | 7.62       | 0.3          |
| no of poles | L1<br>[mm] | L1<br>[inch] |

|                               |                                |                           |                   |   |              |   |  |
|-------------------------------|--------------------------------|---------------------------|-------------------|---|--------------|---|--|
|                               | EC00002212                     | Prim PLM Part No.: 225880 |                   | Prim ERP Part No.: 2499550000               |              |   |  |
|                               | First Issue Date<br>14.11.2016 | Max. nos.                 | <b>Weidmüller</b> |   |              |   |  |
|                               | Scale: 2:1                     | Size: A3                  | Modification      | Drawing no. <b>63450</b> Issue no. <b>4</b> |              |   |  |
|                               |                                |                           | Drawn             | Date  | Name         | Sheet 10 of 17 sheets   |  |
|                               |                                |                           | Responsible       | Date  | Name         |   |  |
| Drawings Assembly             |                                |                           | Approved          | 09.10.2019                                  | Lang, Thomas | <b>SV-SMT 7.62HP/IT/././90/270...</b><br>STISTLEISTE<br>MALE HEADER |  |
| Product file: 7407 BLF 7.50HP |                                |                           |                   |   |              |   |  |

## Recommended wave soldering profiles

**Weidmüller Interface GmbH & Co. KG**  
Klingenbergstraße 16  
D-32758 Detmold  
Germany  
Fon: +49 5231 14-0  
Fax: +49 5231 14-292083  
[www.weidmueller.com](http://www.weidmueller.com)

### Single Wave:



### Double Wave:



### Wave soldering profiles

Wired connection elements should be processed in accordance with the DIN EN 61760-1 standard. We have included two recommendations for practical wave soldering profiles, with which Weidmüller PCB terminals and connectors are qualified.

When choosing a suitable profile for your application, the following factors also need to be considered:

- PCB thickness
- Proportion of Cu in the layers
- Single/double-sided assembly
- Product range
- Heating and cooling rates

The single and double wave profiles each indicate the recommended operating range, including the maximum soldering temperature of 260°C. In practice, the maximum soldering temperature is quite often well below the above maximum profile.

We reserve the right to make technical changes.



## Recommended reflow soldering profile

**Weidmüller Interface GmbH & Co. KG**

Klingenbergstraße 16

D-32758 Detmold

Germany

Fon: +49 5231 14-0

Fax: +49 5231 14-292083

www.weidmueller.com



## Reflow soldering profile

The perfect soldering profile for SMT Surface Mount Technology is one the most exiting question in SMT production. But there are more than one correct answer: The diagram of temperature-on-time is related to processing features of solder paste and to maximum load of components.

We have to consider the following parameters:

- Time for pre heating
- Maximum temperature
- Time above melting point
- Time for cooling
- Maximum heating rate
- Maximum cooling rate

We recommend a typical solder profile with associated process limits. With preheating components and board are prepared smoothly for the solder phase. Heating rate is typically  $\leq +3\text{K/s}$ . In parallel the solder paste is 'activated'. The time above melting point of 217°C the paste gets liquid and components and boards begin to connect. The maximum temperature of 245°C to 254°C should stay between 10 and 40 seconds. In the cooling phase at  $\geq -6\text{K/s}$  solder is cured. Board and components cool down while avoiding cold cracks.