

WIL-TS-M12**Weidmüller Interface GmbH & Co. KG**

Klingenbergstraße 26

D-32758 Detmold

Germany

www.weidmueller.com

The WIL door switch is pre-assembled with an M12 cable and an access line. This allows for a simple Plug and Produce feature with our WIL LED lamp series.

General ordering data

Order No.	2537730000
Type	WIL-TS-M12
GTIN (EAN)	4050118549188
Qty.	1 pc(s).

WIL-TS-M12

Weidmüller Interface GmbH & Co. KG

Klingenbergstraße 26

D-32758 Detmold

Germany

www.weidmueller.com

Technical data

Dimensions and weights

Depth	40 mm	Depth (inches)	1.575 inch
Height	36.3 mm	Height (inches)	1.429 inch
Width	102.5	Width (inches)	4.035 inch
Net weight	120 g		

Temperatures

Operating temperature	-20 - 60
-----------------------	----------

Cable technical specifications

Cable Material	PUR	Sheathing colour	black
Cable length	0.5	Core cross-section	0.34 mm ²

Connection data

Connection thread	M12	Coding	A-coded
Tightening torque	0.8 Nm	Wiring	PIN 4: + (black), PIN 3: - (blue)

Electric data

Rated voltage	24 V DC	Rated current	1.5 A
---------------	---------	---------------	-------

General technical data

Type of mounting	Screw mounting	Drill hole spacing	21.5 mm
Protection degree	IP67		

Classifications

ETIM 6.0	EC002591	ETIM 7.0	EC002591
ETIM 8.0	EC002591	ETIM 9.0	EC002591
ECLASS 9.1	27-27-06-09	ECLASS 10.0	27-27-06-09
ECLASS 11.0	27-27-06-09	ECLASS 12.0	27-27-06-09
ECLASS 13.0	27-27-06-09	ECLASS 14.0	27-27-06-09

Environmental Product Compliance

RoHS Compliance Status	Compliant with exemption
RoHS Exemption (if applicable/known)	6c
REACH SVHC	Lead 7439-92-1
SCIP	c20d50fa-e90d-470c-bef0-6f016c2e152d

Approvals

Approvals



ROHS	Conform
UL File Number Search	UL Website
Certificate no. (cULus)	E197061

Creation date November 7, 2024 9:48:22 AM CET

Catalogue status 26.10.2024 / We reserve the right to make technical changes.

WIL-TS-M12

Weidmüller Interface GmbH & Co. KG

Klingenbergstraße 26

D-32758 Detmold

Germany

www.weidmueller.com

Technical data

Downloads

Engineering Data

[CAD data – STEP](#)

Catalogues

[Catalogues in PDF-format](#)

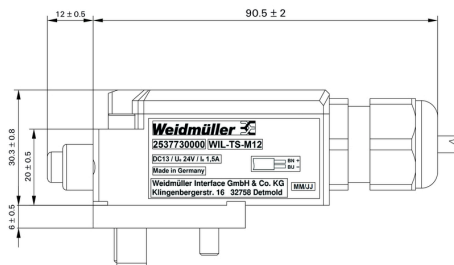
WIL-TS-M12

Weidmüller Interface GmbH & Co. KG
 Klingenbergstraße 26
 D-32758 Detmold
 Germany

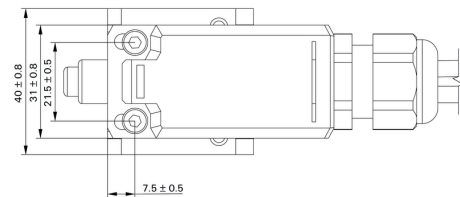
www.weidmueller.com

Drawings

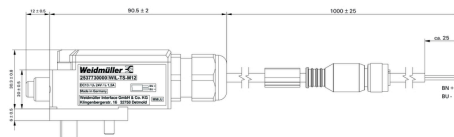
Dimensioned drawing



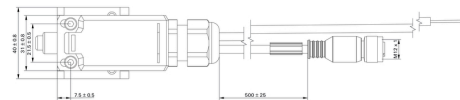
Dimensioned drawing



Dimensioned drawing

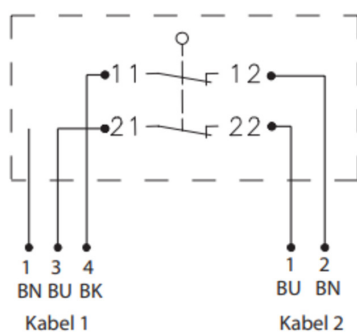


Dimensioned drawing



Wiring

Verdrahtung



WIL-TS-M12

Weidmüller Interface GmbH & Co. KG

Klingenbergstraße 26

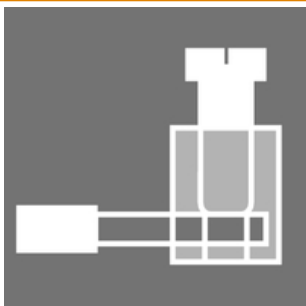
D-32758 Detmold

Germany

www.weidmueller.com

Accessories

Screw terminal connector



Individual cable lengths are often required nowadays. In order to meet these demands, Weidmüller offers a wide range of plug-in connectors for custom assembly. Male plugs and female socket for customisable assembly for M8, M12, M16 and 7/8" connections which are highly robust and ideally suited to machine engineering, for instance. The M12 plug-in connectors offer a choice of 5 different connection systems.

The screw connection can be used in a wide range of applications. With this technology the conductor, optionally with wire-end ferrules, can be plugged into connection elements and secured with a screw. It is the classic, cheapest form of connection technology that also supports multi-conductor connections.

General ordering data

Type	SAIS-4/7	Version
Order No.	9457550000	Field attachable connector, M12, pin, straight
GTIN (EAN)	4032248167647	
Qty.	1 pc(s).	
Type	SAIB-4/7	Version
Order No.	9457240000	Field attachable connector, M12, Female socket, straight
GTIN (EAN)	4008190312275	
Qty.	1 pc(s).	

PUR halogen-free black (U)



Sensor/actuator cables are used for wiring sensors and actuators and for transmitting data or power in various applications. The moulded cable offers connected and tested connection of the plug-in connector to the cable ex-works. The cables may be exposed to a wide range of conditions, such as humidity, dust, heat, cold, shock or vibration.

Our developers have focused specifically on this issue and designed a host of different M8 and M12 sensor-actuator cables so you are bound to find the solution you need for your application.

Is there something you have not managed to find or you feel needs explanation? Talk to us!

General ordering data

Type	SAIL-M12BG-3-3.0U	Version
Order No.	9457820300	Sensor/actuator line, One end without connector, M12, Number of
GTIN (EAN)	4032248228195	poles : 3, 3 m, Female socket, straight, Shielded: No, LED: No, Sheath
Qty.	1 pc(s).	material: PUR, Halogen: No

WIL-TS-M12**Weidmüller Interface GmbH & Co. KG**

Klingenbergstraße 26

D-32758 Detmold

Germany

www.weidmueller.com**Accessories****PUR halogen-free black (U)**

Sensor/actuator cables are used for wiring sensors and actuators and for transmitting data or power in various applications. The moulded cable offers connected and tested connection of the plug-in connector to the cable ex-works. The cables may be exposed to a wide range of conditions, such as humidity, dust, heat, cold, shock or vibration.

Our developers have focused specifically on this issue and designed a host of different M8 and M12 sensor-actuator cables so you are bound to find the solution you need for your application.

The M8 and M12 sensor-actuator cables are supplied as standard with brass nickel-plated nuts. However if you are looking to use our products in an extremely harsh environment, we can also supply a variant with a plastic nut. This enables use in environments where cables with nickel-plated M8 and M12 nuts would rust.

Is there something you have not managed to find or you feel needs explanation? Talk to us!

General ordering data

Type	SAIP-M12BG-3-3.0U	Version
Order No.	1108730300	Sensor/actuator line, One end without connector, M12, Number of
GTIN (EAN)	4032248888481	poles : 3, 3 m, Female socket, straight, Shielded: No, LED: No, Sheath
Qty.	1 pc(s).	material: PUR, Halogen: No