

HDC HE 06 N MQT BL**Weidmüller Interface GmbH & Co. KG**

Klingenbergstraße 26

D-32758 Detmold

Germany

www.weidmueller.com**SNAP IN** 

With the SNAP IN connection, the conductor connection level is already open and the stripped connector can be simply inserted. In the end position, the patented clamping mechanism closes automatically. As a result, it requires virtually no maintenance and a safe, permanent and vibration-proof connection is established. Weidmüller is therefore the first and only manufacturer to offer this innovative connection system.

General ordering data

Version	HDC insert, Male, 500 V, 24 A, Number of poles: 6, SNAP IN, Size: 3
Order No.	2534140000
Type	HDC HE 06 N MQT BL
GTIN (EAN)	4050118577785
Qty.	1 pc(s).

HDC HE 06 N MQT BL

Weidmüller Interface GmbH & Co. KG

Klingenbergstraße 26

D-32758 Detmold

Germany

www.weidmueller.com

Technical data

Dimensions and weights

Depth	51 mm	Depth (inches)	2.008 inch
Height	36.9 mm	Height (inches)	1.453 inch
Width	34 mm	Width (inches)	1.339 inch
Net weight	44 g		

Temperatures

Limit temperature	-40 °C ... 125 °C
-------------------	-------------------

Dimensions

Width	34 mm
-------	-------

General data

BG	3	Free from halogens	true
Insulating material	PC glass-fibre reinforced (UL-listed and railway-certified), PA 66/6	Insulating material group	IIIa
Insulation strength	10 ¹⁰ Ω	Low smoke acc. DIN EN 45545-2	Yes
Material	Copper alloy	Number of poles	6
Plugging cycles, silver	≥ 500	Pollution severity	3
Rated current (DIN EN 61984)	24 A	Rated impulse voltage (DIN EN 61984)	6 kV
Rated voltage (DIN EN 61984)	500 V	Rated voltage according to UL/CSA	600 V AC/DC
Series	HE	Size	3
Surface finish	Silver passivated	Type	Male
Type of connection	SNAP IN	UL 94 flammability rating	V-0
Volume resistance	≤2 mΩ		

Connection data PE

Blade size, slotted (PE connection)	SD 0.8 x 4.0	Connection type PE	Screw connection
Fixing screw	M 4	Rated cross-section	4 mm ²
Stripping length PE connection	10 mm	Tightening torque, max. PE connection	1.5 Nm
Tightening torque, min. PE connection	1.2 Nm	Wire cross section, AWG (PE), max.	AWG 12
Wire cross section, AWG (PE), min.	AWG 20		

Version

BG	3	Blade size	SD 0.6 x 3.5
Conductor cross-section, max.	2.5 mm ²	Conductor cross-section, min.	1 mm ²
Material	Copper alloy	Size	3
Stripping length, rated connection	10 mm	Surface finish	Silver passivated
Type of connection	SNAP IN	Volume resistance	≤2 mΩ
Wire connection cross section AWG, max.	AWG 16	Wire connection cross section AWG, min.	AWG 20
Wire connection cross section, finely stranded, max.	2.5 mm ²	Wire connection cross section, finely stranded, min.	1 mm ²
Wire connection cross-section, finely stranded with wire-end ferrules DIN 46228/1, max.	2.5 mm ²	Wire connection cross-section, finely stranded with wire-end ferrules DIN 46228/1, min.	1 mm ²
Wire cross-section, solid, max.	2.5 mm ²	Wire cross-section, solid, min.	1 mm ²

HDC HE 06 N MQT BL

Weidmüller Interface GmbH & Co. KG

Klingenbergstraße 26

D-32758 Detmold

Germany

www.weidmueller.com

Technical data

Classifications

ETIM 6.0	EC000438	ETIM 7.0	EC000438
ETIM 8.0	EC000438	ETIM 9.0	EC000438
ECLASS 9.0	27-44-02-05	ECLASS 9.1	27-44-02-05
ECLASS 10.0	27-44-02-05	ECLASS 11.0	27-44-02-05
ECLASS 12.0	27-44-02-05	ECLASS 13.0	27-44-02-05
ECLASS 14.0	27-44-02-05		

Environmental Product Compliance

REACH SVHC	Lead 7439-92-1 Potassium perfluorobutane sulfonate 29420-49-3
SCIP	b67daa31-7dca-434d-8290-da7fb52f83a2
RoHS Compliance Status	Compliant with exemption
RoHS Exemption (if applicable/known)	6c

Approvals

Approvals



ROHS	Conform
UL File Number Search	UL Website
Certificate No. (cURus)	E92202

Downloads

Engineering Data	CAD data – STEP
Product Change Notification	Technische Änderung zu HDC HE SNAPIN Kontakteinsätzen Technical change to HDC HE SNAPIN contact inserts Product Change Notice PCN-PB72-20240321-00-A_de Product Change Notice PCN-PB72-20240321-00-A_en Technical change to HDC HE SNAPIN contact inserts Technische Änderung zu HDC HE SNAPIN Kontakteinsätzen
Catalogues	Catalogues in PDF-format

HDC HE 06 N MQT BL

Weidmüller Interface GmbH & Co. KG

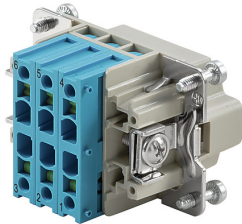
Klingenbergstraße 26

D-32758 Detmold

Germany

www.weidmueller.com

Drawings



HDC HE 06 N MQT BL**Weidmüller Interface GmbH & Co. KG**

Klingenbergstraße 26

D-32758 Detmold

Germany

www.weidmueller.com**Accessories****Slotted screwdriver**

VDE insulated slot-head screwdriver, SDI DIN 7437, ISO 2380/2, drive output acc. to DIN 5264, ISO 2380/1. SoftFinish grip

General ordering data

Type	SDIS 0.6X3.5X100	Version
Order No.	9008390000	Screwdriver, Screwdriver
GTIN (EAN)	4032248056354	
Qty.	1 pc(s).	

DSTV

Various accessories are available for our inserts. This includes coding elements for the inserts.

General ordering data

Type	DSTV COST4	Version
Order No.	1471300000	Heavy-duty connectors, Accessories, Coding System
GTIN (EAN)	4008190017354	
Qty.	100 pc(s).	
Type	DSTV COBU5	Version
Order No.	1471500000	Heavy-duty connectors, Accessories, Coding element
GTIN (EAN)	4008190178543	
Qty.	100 pc(s).	

HDC HE 06 N MQT BL**Weidmüller Interface GmbH & Co. KG**

Klingenbergstraße 26

D-32758 Detmold

Germany

www.weidmueller.com**Accessories****Slotted screwdriver**

Slotted screwdriver with rounded blade SD DIN 5265,
ISO 2380/2, output to DIN 5264, ISO 2380/1.
ChromTop tip, SoftFinish grip

General ordering data

Type	SDS 0.6X3.5X100	Version
Order No.	9008330000	Screwdriver, Screwdriver
GTIN (EAN)	4032248056286	
Qty.	1 pc(s).	