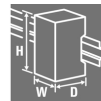


ACT20P-CI-2CO-P-P**Weidmüller Interface GmbH & Co. KG**

Klingenbergstraße 26

D-32758 Detmold

Germany

www.weidmueller.com**Similar to illustration****ACT20P: The flexible solution**

- Precise and highly functional signal converters
- Release levers simplify handling

General ordering data

| | |
|------------|--|
| Version | Signal converter/insulator, Input : 0(4)-20 mA, Output : 2 x 0(4) - 20 mA, Voltage supply also via CH20M rail bus, Signal distributor, HART® |
| Order No. | 2514630000 |
| Type | ACT20P-CI-2CO-P-P |
| GTIN (EAN) | 4050118535204 |
| Qty. | 1 pc(s). |

ACT20P-CI-2CO-P-P**Weidmüller Interface GmbH & Co. KG**

Klingenbergstraße 26

D-32758 Detmold

Germany

www.weidmueller.com

Technical data**Dimensions and weights**

| | | | |
|------------|----------|-----------------|------------|
| Depth | 113.7 mm | Depth (inches) | 4.476 inch |
| Height | 127.1 mm | Height (inches) | 5.004 inch |
| Width | 12.5 mm | Width (inches) | 0.492 inch |
| Net weight | 140 g | | |

Temperatures

| | | | |
|-----------------------------------|----------------------------|-----------------------|---------------------------|
| Storage temperature | 85 °C | Operating temperature | -20 °C...60 °C |
| Humidity at operating temperature | 0...95 % (no condensation) | Humidity | 5...95 %, no condensation |

Probability of failure

| | |
|----------------------------------|------|
| SIL in compliance with IEC 61508 | None |
|----------------------------------|------|

Input

| | | | |
|------------------|---------------------|--------------|--|
| Input current | 0...20 mA, 4...20mA | Input signal | HART signal® bidirectional |
| Number of inputs | | Sensor | 2-wire transmitter (with- out own power supply), 3- wire sensor, 4- wire sensor (with own power supply) |
| | 1 | | |
| Sensor supply | | Voltage drop | ca. 3.8 V @ $R_{Load} = 0 \Omega$; ca. 15 V @ $R_{Load} = 600 \Omega$; (I_{in-} $put = 20 \text{ mA}$) |
| | > 17 V DC at 20 mA | | |

Output

| | | | |
|------------------------|---|-------------------|--|
| Load impedance current | <300 Ω | Number of outputs | 2 |
| Output current | 0...20 mA (if input: 0...20 mA), 4...20 mA (if input: 4...20 mA), HART® digital signal | Type | active, connected control must be passive |

General data

| | | | |
|---------------------|--|--------------------|----------|
| Accuracy | <0.1 % of end value | Configuration | none |
| Current consumption | ≤60 mA (24V power sup- ply, 20mA output) | Protection degree | IP20 |
| Rail | TS 35 | Step response time | ≤ 0,5 ms |
| Voltage supply | 20...30 V at terminal or via CH20M rail bus | | |

Insulation coordination

| | | | |
|--------------------|---|---|---|
| EMC standards | EN 61326-1, EN 61000-6-2, EN 61000-6-4 | Impulse withstand voltage | 4 kV (1.2/50 μs) |
| Insulation voltage | 2 kV inputs / outputs / power supply | Insulation voltage input or output/supply | 2 kV inputs / outputs / power supply |
| Test voltage | 0.3 kV | | |

Data for Ex applications (ATEX)

| | |
|---------|------------------------|
| Marking | II 3 G Ex ec IIC T5 Gc |
|---------|------------------------|

ACT20P-CI-2CO-P-P

Weidmüller Interface GmbH & Co. KG
Klingenbergstraße 26
D-32758 Detmold
Germany

www.weidmueller.com

Technical data

Connection data

| | | | |
|---|---------------------|---|---------------------|
| Type of connection | PUSH IN | Tightening torque, min. | 0.4 Nm |
| Tightening torque, max. | 0.6 Nm | Clamping range, rated connection | 2.5 mm ² |
| Clamping range, min. | 0.5 mm ² | Clamping range, max. | 2.5 mm ² |
| Wire connection cross section AWG, min. | AWG 26 | Wire connection cross section AWG, max. | AWG 14 |
| Wire cross-section, solid, min. | 0.2 mm ² | Wire cross-section, solid, max. | 2.5 mm ² |
| Wire connection cross section, finely stranded, min. | 0.5 mm ² | Wire connection cross section, finely stranded, max. | 2.5 mm ² |
| Wire connection cross-section, finely stranded with wire-end ferrules DIN 46228/4, min. | 0.5 mm ² | Wire connection cross-section, finely stranded with wire-end ferrules DIN 46228/4, max. | 2.5 mm ² |

Classifications

| | | | |
|-------------|-------------|-------------|-------------|
| ETIM 6.0 | EC002653 | ETIM 7.0 | EC002653 |
| ETIM 8.0 | EC002653 | ETIM 9.0 | EC002653 |
| ECLASS 9.0 | 27-21-01-20 | ECLASS 9.1 | 27-21-01-20 |
| ECLASS 10.0 | 27-21-01-20 | ECLASS 11.0 | 27-21-01-20 |
| ECLASS 12.0 | 27-21-01-20 | ECLASS 13.0 | 27-21-01-20 |

Environmental Product Compliance

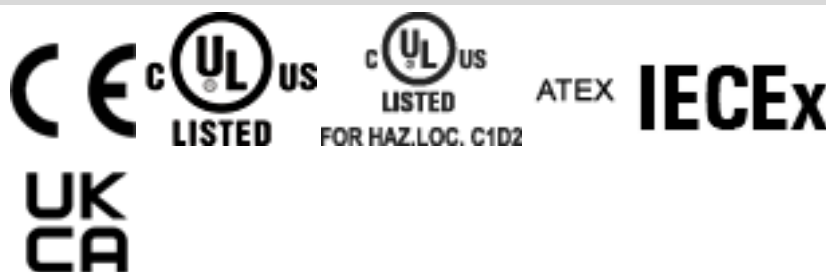
| | |
|------------|--------------------------------------|
| REACH SVHC | Lead 7439-92-1 |
| SCIP | 2f6dd957-421a-46db-a0c2-cf1609156924 |

Important note

| | |
|---------------------|---|
| Product information | <p>The non-adjustable DC isolating amplifier ACT20P-CI-2CO isolates analogue standard current signals from a power source or from a 2- or 3-wire sensor. An analogue input current signal is converted linearly and doubled to provide two galvanically isolated output current signals. The power supply is galvanically isolated from the input and output (4-way isolation).</p> <p>Properties</p> <ul style="list-style-type: none"> • HART-compatible for 0.5 - 2.5 kHz • The active or passive mA signal inputs are fully galvanically isolated. • Operating status display on a front panel LED • Galvanic 4-way isolation between input, output and supply. |
|---------------------|---|

Approvals

Approvals



| | |
|---------------------------|------------|
| ROHS | Conform |
| UL File Number Search | UL Website |
| Certificate no. (cULus) | E469563 |
| Certificate no. (cULusEX) | E338066 |

ACT20P-CI-2CO-P-P

Weidmüller Interface GmbH & Co. KG

Klingenbergstraße 26

D-32758 Detmold

Germany

www.weidmueller.com

Technical data

Downloads

| | |
|---|---|
| Approval/Certificate/Document of Conformity | IECEX Certification |
| | ATEX Certification |
| | UL Certification (hazardous location) |
| | UL Certification (US-CAN) |
| | Declaration of Conformity |
| Engineering Data | CAD data – STEP |
| User Documentation | Instruction sheet |
| Catalogues | Catalogues in PDF-format |

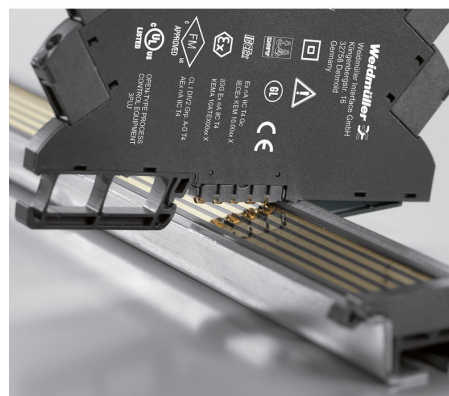
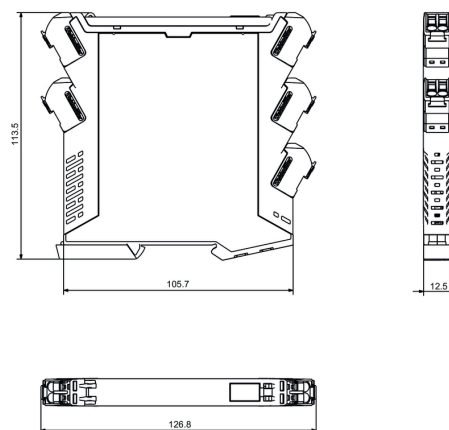
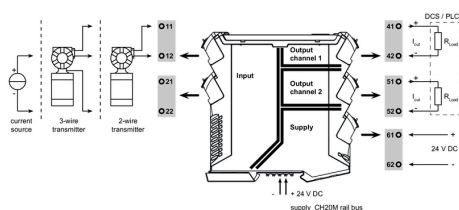
ACT20P-CI-2CO-P-P

Weidmüller Interface GmbH & Co. KG
Klingenbergstraße 26
D-32758 Detmold
Germany

www.weidmueller.com

Drawings

Dimensioned drawing



ACT20P-CI-2CO-P-P**Weidmüller Interface GmbH & Co. KG**

Klingenbergstraße 26

D-32758 Detmold

Germany

www.weidmueller.com**Accessories****Blank**

ESG is the tried-and-tested marker in MultiCard format for use on many well-known electrical devices. The result is high-quality device marking with a high-contrast appearance.

Various types are available for devices from manufacturers like Siemens, ABB, Beckhoff etc.

Advantages at a glance:

- Tags for universal usage, self-adhesive or clip-on tags, depending on type
- For aligned equipment, e.g. circuit breakers, we supply ESG markers for clipping onto tag rails
- Individual laser-quality printing according to specifications

For custom printing: Please send us a file of our labeling software M-Print PRO or M-Print PRO Online (without installation) for your labeling specifications.

General ordering data

| | | |
|------------|----------------------------|---|
| Type | ESG 8/13.5/43.3 SAI AU | Version |
| Order No. | 1912130000 | ESG, Device markers x 13.5 mm, PA 66, Colour: Transparent |
| GTIN (EAN) | 4032248541164 | |
| Qty. | 5 pc(s). | |

ACT20P-CI-2CO-P-P**Weidmüller Interface GmbH & Co. KG**

Klingenbergstraße 26

D-32758 Detmold

Germany

www.weidmueller.com**Accessories****Blank**

ESG is the tried-and-tested marker in MultiCard format for use on many well-known electrical devices. The result is high-quality device marking with a high-contrast appearance.

Various types are available for devices from manufacturers like Siemens, ABB, Beckhoff etc.

Advantages at a glance:

- Tags for universal usage, self-adhesive or clip-on tags, depending on type
- For aligned equipment, e.g. circuit breakers, we supply ESG markers for clipping onto tag rails
- Individual laser-quality printing according to specifications

For custom printing: Please send us a file of our labeling software M-Print PRO or M-Print PRO Online (without installation) for your labeling specifications.

General ordering data

| | | |
|------------|----------------------------|---|
| Type | ESG 6.6/11 BHZ 5.00/02 | Version |
| Order No. | 1082490000 | ESG, Device markers x 11 mm, PA 66, Colour: white |
| GTIN (EAN) | 4032248845330 | |
| Qty. | 200 pc(s). | |