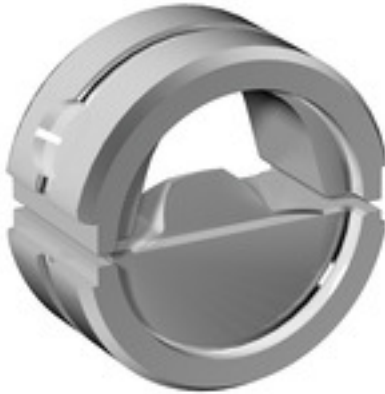


**ES EPG 60/HPG DIN 120****Weidmüller Interface GmbH & Co. KG**

Klingenbergstraße 26

D-32758 Detmold

Germany

[www.weidmueller.com](http://www.weidmueller.com)**Similar to illustration****Crimping tools for cable lugs, connectors and wire-end ferrules with interchangeable inserts**

- extremely fast processing thanks to hydraulic support
- large processing range up to 300 mm<sup>2</sup>
- 270° revolving quick-action crimping head
- automatic pressure limitation and monitoring via pressure sensor
- electronic control and monitoring of the crimping process
- Saving of all crimping cycles and error messages to internal memory
- Reading of all cycles and error messages via USB
- Li-ion rechargeable battery with charge status indicator: 18 V, 2 Ah

**General ordering data**

| Version    | Crimping tool insert, Indent crimp |
|------------|------------------------------------|
| Order No.  | <a href="#">2505360000</a>         |
| Type       | ES EPG 60/HPG DIN 120              |
| GTIN (EAN) | 4050118519747                      |
| Qty.       | 1 pc(s).                           |

**ES EPG 60/HPG DIN 120****Weidmüller Interface GmbH & Co. KG**

Klingenbergstraße 26

D-32758 Detmold

Germany

[www.weidmueller.com](http://www.weidmueller.com)**Technical data****Dimensions and weights**

|            |       |                 |            |
|------------|-------|-----------------|------------|
| Depth      | 22 mm | Depth (inches)  | 0.866 inch |
| Height     | 42 mm | Height (inches) | 1.654 inch |
| Width      | 42 mm | Width (inches)  | 1.654 inch |
| Net weight | 156 g |                 |            |

**Crimp inserts**

|                            |     |                |       |
|----------------------------|-----|----------------|-------|
| Crimp cross-section copper | 120 | Crimping width | 16 mm |
| Crimping width in mm       | 16  |                |       |

**Description of contact**

|                                   |                 |  |
|-----------------------------------|-----------------|--|
| Conductor cross-section, max. AWG | Type of contact | DIN 46234 cable lug, DIN 46341 Part 1 cable lug, DIN 46230 cable lug |
| 4/0                               |                 |  |

**tool data crimping**

|                         |              |                     |
|-------------------------|--------------|---------------------|
| Cable lug cross section | nominal      | 120 mm <sup>2</sup> |
| Crimping type/profile   | Indent crimp |                     |

**Classifications**

|             |             |             |             |
|-------------|-------------|-------------|-------------|
| ETIM 6.0    | EC001282    | ETIM 7.0    | EC001282    |
| ETIM 8.0    | EC001282    | ETIM 9.0    | EC001282    |
| ECLASS 9.0  | 21-04-90-90 | ECLASS 9.1  | 21-01-90-90 |
| ECLASS 10.0 | 21-04-90-90 | ECLASS 11.0 | 21-04-90-90 |
| ECLASS 12.0 | 21-04-90-90 | ECLASS 13.0 | 21-04-90-90 |

**Downloads**

|            |  |
|------------|--|
| Catalogues | <a href="#">Catalogues in PDF-format</a> |
|------------|--|