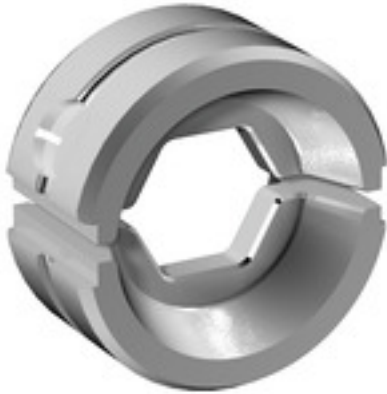


**ES EPG/HPG 60 HEX 95****Weidmüller Interface GmbH & Co. KG**

Klingenbergstraße 26

D-32758 Detmold

Germany

[www.weidmueller.com](http://www.weidmueller.com)**Similar to illustration****Crimping tools for cable lugs, connectors and wire-end ferrules with interchangeable inserts**

- extremely fast processing thanks to hydraulic support
- large processing range up to 300 mm<sup>2</sup>
- 270° revolving quick-action crimping head
- automatic pressure limitation and monitoring via pressure sensor
- electronic control and monitoring of the crimping process
- Saving of all crimping cycles and error messages to internal memory
- Reading of all cycles and error messages via USB
- Li-ion rechargeable battery with charge status indicator: 18 V, 2 Ah

**General ordering data**

Version	Crimping tool insert, Hexagonal crimp
Order No.	<a href="#">2505220000</a>
Type	ES EPG/HPG 60 HEX 95
GTIN (EAN)	4050118519563
Qty.	1 pc(s).

**ES EPG/HPG 60 HEX 95****Weidmüller Interface GmbH & Co. KG**

Klingenbergstraße 26

D-32758 Detmold

Germany

[www.weidmueller.com](http://www.weidmueller.com)**Technical data****Dimensions and weights**

Depth	22 mm	Depth (inches)	0.866 inch
Height	42 mm	Height (inches)	1.654 inch
Width	42 mm	Width (inches)	1.654 inch
Net weight	135 g		

**Crimp inserts**

Crimp cross-section aluminium	70	Crimp cross-section copper	95
Crimping width	5 mm	Crimping width in mm	5
Identification number	18		

**Description of contact**

Conductor cross-section, max. AWG	3/0	Type of contact	DIN 46235 cable lug, DIN 46267 Part 1 cable lug
-----------------------------------	-----	-----------------	---

**tool data crimping**

Cable lug cross section	nominal	95 mm <sup>2</sup>
Crimping type/profile	Hexagonal crimp	

**Classifications**

ETIM 6.0	EC001282	ETIM 7.0	EC001282
ETIM 8.0	EC001282	ETIM 9.0	EC001282
ECLASS 9.0	21-04-90-90	ECLASS 9.1	21-01-90-90
ECLASS 10.0	21-04-90-90	ECLASS 11.0	21-04-90-90
ECLASS 12.0	21-04-90-90	ECLASS 13.0	21-04-90-90
ECLASS 14.0	21-04-90-90		

**Environmental Product Compliance**

REACH SVHC	/
RoHS Compliance Status	Compliant without exemption

**Downloads**

Catalogues	<a href="#">Catalogues in PDF-format</a>
------------	--

## ES EPG/HPG 60 HEX 95

Weidmüller Interface GmbH &amp; Co. KG

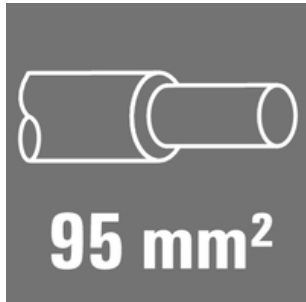
Klingenbergstraße 26

D-32758 Detmold

Germany

www.weidmueller.com

## Accessories

95 mm<sup>2</sup>

**The use of insulated connectors guarantees users consistent electrical connection quality in the long term.**

- Wide range of insulated and non-insulated cable lugs and connectors
- Tubular cable lugs according to current market standards (Euroseries)
- Compression cable lugs acc. to DIN 46235
- Sheet metal cable lugs acc. to DIN 46234
- Insulated ring cable lugs to DIN 46237
- Insulated pin cable lugs to DIN 46231

## General ordering data

Type	KRN-M10/-95	Version
Order No.	<a href="#">1495610000</a>	cable lug, terminal end, 95 mm <sup>2</sup>
GTIN (EAN)	4050118305371	
Qty.	25 pc(s).	
Type	KRN-M8/-95	Version
Order No.	<a href="#">1495600000</a>	cable lug, terminal end, 95 mm <sup>2</sup>
GTIN (EAN)	4050118305241	
Qty.	25 pc(s).	
Type	KRN-M12/-95	Version
Order No.	<a href="#">1495620000</a>	cable lug, terminal end, 95 mm <sup>2</sup>
GTIN (EAN)	4050118305265	
Qty.	25 pc(s).	
Type	KRN-M16/-95	Version
Order No.	<a href="#">1495630000</a>	cable lug, terminal end, 95 mm <sup>2</sup>
GTIN (EAN)	4050118305326	
Qty.	25 pc(s).	
Type	KRN-M14/-95	Version
Order No.	<a href="#">1495780000</a>	cable lug, terminal end, 95 mm <sup>2</sup>
GTIN (EAN)	4050118305555	
Qty.	25 pc(s).	
Type	KRN-M6/-95	Version
Order No.	<a href="#">1495820000</a>	cable lug, terminal end, 95 mm <sup>2</sup>
GTIN (EAN)	4050118305531	
Qty.	25 pc(s).	
Type	KRN-M20/-95	Version
Order No.	<a href="#">1495640000</a>	cable lug, terminal end, 95 mm <sup>2</sup>
GTIN (EAN)	4050118305319	
Qty.	25 pc(s).	

## ES EPG/HPG 60 HEX 95

Weidmüller Interface GmbH &amp; Co. KG

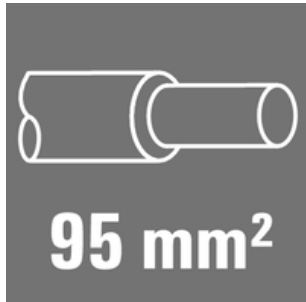
Klingenbergstraße 26

D-32758 Detmold

Germany

www.weidmueller.com

## Accessories

95 mm<sup>2</sup>

**The use of insulated connectors guarantees users consistent electrical connection quality in the long term.**

- Wide range of insulated and non-insulated cable lugs and connectors
- Tubular cable lugs according to current market standards (Euroseries)
- Compression cable lugs acc. to DIN 46235
- Sheet metal cable lugs acc. to DIN 46234
- Insulated ring cable lugs to DIN 46237
- Insulated pin cable lugs to DIN 46231

## General ordering data

Type	KWN-M12/-95 90	Version
Order No.	<a href="#">1496100000</a>	cable lug, terminal end, 95 mm <sup>2</sup>
GTIN (EAN)	4050118305487	
Qty.	25 pc(s).	
Type	KWN-M10/-95 90	Version
Order No.	<a href="#">1496090000</a>	cable lug, terminal end, 95 mm <sup>2</sup>
GTIN (EAN)	4050118305692	
Qty.	25 pc(s).	
Type	KWN-M14/-95 90	Version
Order No.	<a href="#">1494670000</a>	cable lug, terminal end, 95 mm <sup>2</sup>
GTIN (EAN)	4050118304411	
Qty.	25 pc(s).	
Type	KWN-M8/-95 90	Version
Order No.	<a href="#">1496080000</a>	cable lug, terminal end, 95 mm <sup>2</sup>
GTIN (EAN)	4050118305685	
Qty.	25 pc(s).	
Type	KWN-M16/-95 90	Version
Order No.	<a href="#">1496110000</a>	cable lug, terminal end, 95 mm <sup>2</sup>
GTIN (EAN)	4050118305678	
Qty.	25 pc(s).	

## ES EPG/HPG 60 HEX 95

Weidmüller Interface GmbH &amp; Co. KG

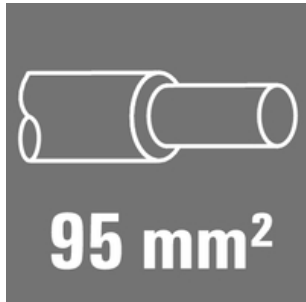
Klingenbergstraße 26

D-32758 Detmold

Germany

www.weidmueller.com

## Accessories

95 mm<sup>2</sup>

**The use of insulated connectors guarantees users consistent electrical connection quality in the long term.**

- Wide range of insulated and non-insulated cable lugs and connectors
- Tubular cable lugs according to current market standards (Euroseries)
- Compression cable lugs acc. to DIN 46235
- Sheet metal cable lugs acc. to DIN 46234
- Insulated ring cable lugs to DIN 46237
- Insulated pin cable lugs to DIN 46231

## General ordering data

Type	KRN-M6/-95 S	Version
Order No.	<a href="#">1494430000</a>	cable lug, terminal end, 95 mm <sup>2</sup>
GTIN (EAN)	4050118303957	
Qty.	25 pc(s).	
Type	KRN-M8/-95 S	Version
Order No.	<a href="#">1494890000</a>	cable lug, terminal end, 95 mm <sup>2</sup>
GTIN (EAN)	4050118304121	
Qty.	25 pc(s).	
Type	KRN-M10/-95 S	Version
Order No.	<a href="#">1494900000</a>	cable lug, terminal end, 95 mm <sup>2</sup>
GTIN (EAN)	4050118304398	
Qty.	25 pc(s).	
Type	KRN-M12/-95 S	Version
Order No.	<a href="#">1494910000</a>	cable lug, terminal end, 95 mm <sup>2</sup>
GTIN (EAN)	4050118304510	
Qty.	25 pc(s).	

95 mm<sup>2</sup>

**The use of insulated connectors guarantees users consistent electrical connection quality in the long term.**

- Wide range of insulated and non-insulated cable lugs and connectors
- Tubular cable lugs according to current market standards (Euroseries)
- Compression cable lugs acc. to DIN 46235
- Sheet metal cable lugs acc. to DIN 46234
- Insulated ring cable lugs to DIN 46237
- Insulated pin cable lugs to DIN 46231

## General ordering data

Type	KQN-M16/-95	Version
Order No.	<a href="#">1493290000</a>	cable lug, terminal end, 95 mm <sup>2</sup>
GTIN (EAN)	4050118303025	
Qty.	25 pc(s).	

## ES EPG/HPG 60 HEX 95

Weidmüller Interface GmbH &amp; Co. KG

Klingenbergstraße 26

D-32758 Detmold

Germany

www.weidmueller.com

## Accessories

Type	KQN-M10/-95	Version
Order No.	<a href="#">1493270000</a>	cable lug, terminal end, 95 mm <sup>2</sup>
GTIN (EAN)	4050118303018	
Qty.	25 pc(s).	
Type	KQN-M8/-95	Version
Order No.	<a href="#">1493260000</a>	cable lug, terminal end, 95 mm <sup>2</sup>
GTIN (EAN)	4050118303162	
Qty.	25 pc(s).	
Type	KQN-M20/-95	Version
Order No.	<a href="#">1493310000</a>	cable lug, terminal end, 95 mm <sup>2</sup>
GTIN (EAN)	4050118303407	
Qty.	25 pc(s).	
Type	KQN-M12/-95	Version
Order No.	<a href="#">1493280000</a>	cable lug, terminal end, 95 mm <sup>2</sup>
GTIN (EAN)	4050118302899	
Qty.	25 pc(s).	

95 mm<sup>2</sup>

**The use of insulated connectors guarantees users consistent electrical connection quality in the long term.**

- Wide range of insulated and non-insulated cable lugs and connectors
- Tubular cable lugs according to current market standards (Euroseries)
- Compression cable lugs acc. to DIN 46235
- Sheet metal cable lugs acc. to DIN 46234
- Insulated ring cable lugs to DIN 46237
- Insulated pin cable lugs to DIN 46231

## General ordering data

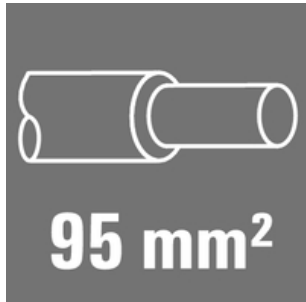
Type	VSTN/-95	Version
Order No.	<a href="#">1494770000</a>	cable lug, terminal end, 95 mm <sup>2</sup> , 95 mm <sup>2</sup>
GTIN (EAN)	4050118304220	
Qty.	50 pc(s).	

**ES EPG/HPG 60 HEX 95****Weidmüller Interface GmbH & Co. KG**

Klingenbergstraße 26

D-32758 Detmold

Germany

[www.weidmueller.com](http://www.weidmueller.com)**Accessories****95 mm<sup>2</sup>**

**The use of insulated connectors guarantees users consistent electrical connection quality in the long term.**

- Wide range of insulated and non-insulated cable lugs and connectors
- Tubular cable lugs according to current market standards (Euroseries)
- Compression cable lugs acc. to DIN 46235
- Sheet metal cable lugs acc. to DIN 46234
- Insulated ring cable lugs to DIN 46237
- Insulated pin cable lugs to DIN 46231

**General ordering data**

Type	VPN/-95	Version
Order No.	<a href="#">1498680000</a>	cable lug, terminal end, 95 mm <sup>2</sup> , 95 mm <sup>2</sup>
GTIN (EAN)	4050118307917	
Qty.	50 pc(s).	

**95 mm<sup>2</sup>**

**The use of insulated connectors guarantees users consistent electrical connection quality in the long term.**

- Wide range of insulated and non-insulated cable lugs and connectors
- Tubular cable lugs according to current market standards (Euroseries)
- Compression cable lugs acc. to DIN 46235
- Sheet metal cable lugs acc. to DIN 46234
- Insulated ring cable lugs to DIN 46237
- Insulated pin cable lugs to DIN 46231

**General ordering data**

Type	VSTN/95	Version
Order No.	<a href="#">1493090000</a>	cable lug, terminal end, 95 mm <sup>2</sup> , 95 mm <sup>2</sup>
GTIN (EAN)	4050118302929	
Qty.	50 pc(s).	

## ES EPG/HPG 60 HEX 95

Weidmüller Interface GmbH &amp; Co. KG

Klingenbergstraße 26

D-32758 Detmold

Germany

www.weidmueller.com

## Accessories

## Tools

**Crimping tools for cable lugs, connectors and wire-end ferrules with interchangeable inserts**

- extremely fast processing thanks to hydraulic support
- large processing range up to 300 mm<sup>2</sup>
- 270° revolving quick-action crimping head
- automatic pressure limitation and monitoring via pressure sensor
- electronic control and monitoring of the crimping process
- Saving of all crimping cycles and error messages to internal memory
- Reading of all cycles and error messages via USB
- Li-ion rechargeable battery with charge status indicator: 18 V, 2 Ah

## General ordering data

Type	EPG 60	Version
Order No.	<a href="#">2453810000</a>	Pressing tools, Tools, Pressing tool, 6mm <sup>2</sup> , 300mm <sup>2</sup> , Hexagonal crimp,
GTIN (EAN)	4050118468434	WM crimp, Indent crimp, Trapezoidal crimp, Oval crimping
Qty.	1 pc(s).	

## Tools

**Crimping tools for cable lugs, connectors and wire-end ferrules with interchangeable inserts**

- extremely fast processing thanks to hydraulic support
- large processing range up to 400 mm<sup>2</sup>
- 360° revolving quick action crimping head
- automatic pressure limitation and monitoring via pressure sensor
- Additional features for APG series:
- electronic control and monitoring of the crimping process
- Saving of all crimping cycles and error messages to internal memory
- Reading of all cycles and error messages via USB

## General ordering data

Type	HPG 60	Version
Order No.	<a href="#">2453820000</a>	6mm <sup>2</sup> , 300mm <sup>2</sup> , Hexagonal crimp, WM crimp, Indent crimp,
GTIN (EAN)	4050118468427	Trapezoidal crimp, Oval crimping
Qty.	1 pc(s).	

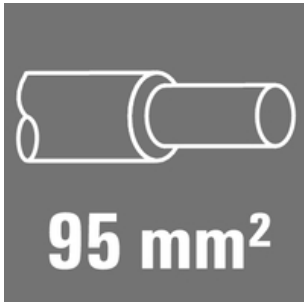


**ES EPG/HPG 60 HEX 95****Weidmüller Interface GmbH & Co. KG**

Klingenbergstraße 26

D-32758 Detmold

Germany

[www.weidmueller.com](http://www.weidmueller.com)**Accessories****95 mm<sup>2</sup>**

**The use of insulated connectors guarantees users consistent electrical connection quality in the long term.**

- Wide range of insulated and non-insulated cable lugs and connectors
- Tubular cable lugs according to current market standards (Euroseries)
- Compression cable lugs acc. to DIN 46235
- Sheet metal cable lugs acc. to DIN 46234
- Insulated ring cable lugs to DIN 46237
- Insulated pin cable lugs to DIN 46231

**General ordering data**

Type	VPLN/-95	Version
Order No.	<a href="#">1492950000</a>	cable lug, terminal end, 95 mm <sup>2</sup> , 95 mm <sup>2</sup>
GTIN (EAN)	4050118302622	
Qty.	50 pc(s).	

**95 mm<sup>2</sup>**

**The use of insulated connectors guarantees users consistent electrical connection quality in the long term.**

- Wide range of insulated and non-insulated cable lugs and connectors
- Tubular cable lugs according to current market standards (Euroseries)
- Compression cable lugs acc. to DIN 46235
- Sheet metal cable lugs acc. to DIN 46234
- Insulated ring cable lugs to DIN 46237
- Insulated pin cable lugs to DIN 46231

**General ordering data**

Type	KSN/-95	Version
Order No.	<a href="#">1492840000</a>	cable lug, terminal end, 95 mm <sup>2</sup> , 95 mm <sup>2</sup>
GTIN (EAN)	4050118302790	
Qty.	25 pc(s).	

## ES EPG/HPG 60 HEX 95

Weidmüller Interface GmbH &amp; Co. KG

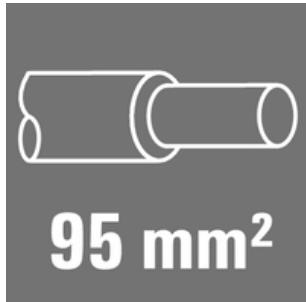
Klingenbergstraße 26

D-32758 Detmold

Germany

www.weidmueller.com

## Accessories

95 mm<sup>2</sup>

**The use of insulated connectors guarantees users consistent electrical connection quality in the long term.**

- Wide range of insulated and non-insulated cable lugs and connectors
- Tubular cable lugs according to current market standards (Euroseries)
- Compression cable lugs acc. to DIN 46235
- Sheet metal cable lugs acc. to DIN 46234
- Insulated ring cable lugs to DIN 46237
- Insulated pin cable lugs to DIN 46231

## General ordering data

Type	KWN-M8/-95 45	Version
Order No.	<a href="#">1496340000</a>	cable lug, terminal end, 95 mm <sup>2</sup>
GTIN (EAN)	4050118305821	
Qty.	25 pc(s).	
Type	KWN-M12/-95 45	Version
Order No.	<a href="#">1496370000</a>	cable lug, terminal end, 95 mm <sup>2</sup>
GTIN (EAN)	4050118305890	
Qty.	25 pc(s).	
Type	KWN-M16/-95 45	Version
Order No.	<a href="#">1496380000</a>	cable lug, terminal end, 95 mm <sup>2</sup>
GTIN (EAN)	4050118305838	
Qty.	25 pc(s).	
Type	KWN-M10/-95 45	Version
Order No.	<a href="#">1496350000</a>	cable lug, terminal end, 95 mm <sup>2</sup>
GTIN (EAN)	4050118306125	
Qty.	25 pc(s).	

95 mm<sup>2</sup>

**The use of insulated connectors guarantees users consistent electrical connection quality in the long term.**

- Wide range of insulated and non-insulated cable lugs and connectors
- Tubular cable lugs according to current market standards (Euroseries)
- Compression cable lugs acc. to DIN 46235
- Sheet metal cable lugs acc. to DIN 46234
- Insulated ring cable lugs to DIN 46237
- Insulated pin cable lugs to DIN 46231

## General ordering data

Type	KP-M12/-95	Version
Order No.	<a href="#">1498210000</a>	cable lug, terminal end, 95 mm <sup>2</sup>
GTIN (EAN)	4050118307610	
Qty.	50 pc(s).	

## ES EPG/HPG 60 HEX 95

Weidmüller Interface GmbH &amp; Co. KG

Klingenbergstraße 26

D-32758 Detmold

Germany

www.weidmueller.com

## Accessories

Type	KP-M20/-95	Version
Order No.	<a href="#">1498230000</a>	cable lug, terminal end, 95 mm <sup>2</sup>
GTIN (EAN)	4050118307634	
Qty.	50 pc(s).	
Type	KP-M16/-95	Version
Order No.	<a href="#">1498220000</a>	cable lug, terminal end, 95 mm <sup>2</sup>
GTIN (EAN)	4050118307719	
Qty.	50 pc(s).	
Type	KP-M14/-95	Version
Order No.	<a href="#">1498520000</a>	cable lug, terminal end, 95 mm <sup>2</sup>
GTIN (EAN)	4050118307863	
Qty.	50 pc(s).	
Type	KP-M10/-95	Version
Order No.	<a href="#">1498190000</a>	cable lug, terminal end, 95 mm <sup>2</sup>
GTIN (EAN)	4050118307603	
Qty.	50 pc(s).	
Type	KP-M8/-95	Version
Order No.	<a href="#">1498180000</a>	cable lug, terminal end, 95 mm <sup>2</sup>
GTIN (EAN)	4050118307498	
Qty.	50 pc(s).	

95 mm<sup>2</sup>

**The use of insulated connectors guarantees users consistent electrical connection quality in the long term.**

- Wide range of insulated and non-insulated cable lugs and connectors
- Tubular cable lugs according to current market standards (Euroseries)
- Compression cable lugs acc. to DIN 46235
- Sheet metal cable lugs acc. to DIN 46234
- Insulated ring cable lugs to DIN 46237
- Insulated pin cable lugs to DIN 46231

## General ordering data

Type	KWPN-M10/-95 90	Version
Order No.	<a href="#">1497710000</a>	cable lug, terminal end, 95 mm <sup>2</sup>
GTIN (EAN)	4050118307139	
Qty.	25 pc(s).	
Type	KWPN-M16/-95 90	Version
Order No.	<a href="#">1497730000</a>	cable lug, terminal end, 95 mm <sup>2</sup>
GTIN (EAN)	4050118307054	
Qty.	25 pc(s).	
Type	KWPN-M8/-95 90	Version
Order No.	<a href="#">1497690000</a>	cable lug, terminal end, 95 mm <sup>2</sup>
GTIN (EAN)	4050118307207	
Qty.	25 pc(s).	
Type	KWPN-M12/-95 90	Version
Order No.	<a href="#">1497720000</a>	cable lug, terminal end, 95 mm <sup>2</sup>
GTIN (EAN)	4050118307214	
Qty.	25 pc(s).	