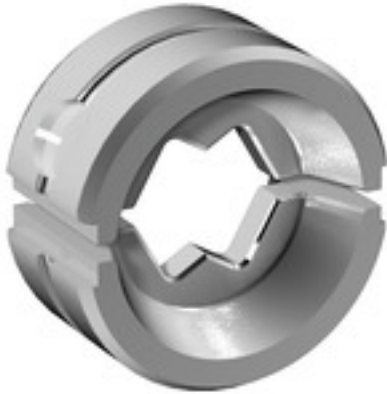


**ES EPG/HPG 60 WM 185****Weidmüller Interface GmbH & Co. KG**

Klingenbergstraße 26

D-32758 Detmold

Germany

[www.weidmueller.com](http://www.weidmueller.com)**Similar to illustration****Crimping tools for cable lugs, connectors and wire-end ferrules with interchangeable inserts**

- extremely fast processing thanks to hydraulic support
- large processing range up to 300 mm<sup>2</sup>
- 270° revolving quick-action crimping head
- automatic pressure limitation and monitoring via pressure sensor
- electronic control and monitoring of the crimping process
- Saving of all crimping cycles and error messages to internal memory
- Reading of all cycles and error messages via USB
- Li-ion rechargeable battery with charge status indicator: 18 V, 2 Ah

**General ordering data**

Version	Crimping tool insert, WM crimp
Order No.	<a href="#">2469630000</a>
Type	ES EPG/HPG 60 WM 185
GTIN (EAN)	4050118484038
Qty.	1 pc(s).

## ES EPG/HPG 60 WM 185

**Weidmüller Interface GmbH & Co. KG**

Klingenbergstraße 26

D-32758 Detmold

Germany

[www.weidmueller.com](http://www.weidmueller.com)

## Technical data

### Dimensions and weights

Depth	22 mm	Depth (inches)	0.866 inch
Height	42 mm	Height (inches)	1.654 inch
Width	42 mm	Width (inches)	1.654 inch
Net weight	131 g		

### Crimp inserts

Crimp cross-section copper	185	Crimping width	5 mm
Crimping width in mm	5		

### Description of contact

Conductor cross-section, max. AWG	6/0	Type of contact	Euro series cable lug
-----------------------------------	-----	-----------------	-----------------------

### tool data crimping

Cable lug cross section	nominal	185 mm <sup>2</sup>
Crimping type/profile	WM crimp	

### Classifications

ETIM 6.0	EC001282	ETIM 7.0	EC001282
ETIM 8.0	EC001282	ETIM 9.0	EC001282
ECLASS 9.0	21-04-90-90	ECLASS 9.1	21-01-90-90
ECLASS 10.0	21-04-90-90	ECLASS 11.0	21-04-90-90
ECLASS 12.0	21-04-90-90	ECLASS 13.0	21-04-90-90

### Downloads

Catalogues	<a href="#">Catalogues in PDF-format</a>
------------	--

## ES EPG/HPG 60 WM 185

Weidmüller Interface GmbH &amp; Co. KG

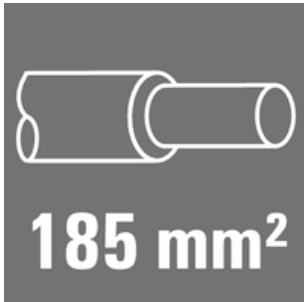
Klingenbergstraße 26

D-32758 Detmold

Germany

www.weidmueller.com

## Accessories

185 mm<sup>2</sup>

**The use of insulated connectors guarantees users consistent electrical connection quality in the long term.**

- Wide range of insulated and non-insulated cable lugs and connectors
- Tubular cable lugs according to current market standards (Euroseries)
- Compression cable lugs acc. to DIN 46235
- Sheet metal cable lugs acc. to DIN 46234
- Insulated ring cable lugs to DIN 46237
- Insulated pin cable lugs to DIN 46231

## General ordering data

Type	KWPN-M20/-185 90	Version
Order No.	<a href="#">1496720000</a>	cable lug, terminal end, 185 mm <sup>2</sup>
GTIN (EAN)	4050118306187	
Qty.	25 pc(s).	
Type	KWPN-M8/-185 90	Version
Order No.	<a href="#">1496800000</a>	cable lug, terminal end, 185 mm <sup>2</sup>
GTIN (EAN)	4050118306316	
Qty.	25 pc(s).	
Type	KWPN-M12/-185 90	Version
Order No.	<a href="#">1496700000</a>	cable lug, terminal end, 185 mm <sup>2</sup>
GTIN (EAN)	4050118306323	
Qty.	25 pc(s).	
Type	KWPN-M10/-185 90	Version
Order No.	<a href="#">1496690000</a>	cable lug, terminal end, 185 mm <sup>2</sup>
GTIN (EAN)	4050118306170	
Qty.	25 pc(s).	
Type	KWPN-M16/-185 90	Version
Order No.	<a href="#">1496710000</a>	cable lug, terminal end, 185 mm <sup>2</sup>
GTIN (EAN)	4050118306262	
Qty.	25 pc(s).	

## ES EPG/HPG 60 WM 185

Weidmüller Interface GmbH &amp; Co. KG

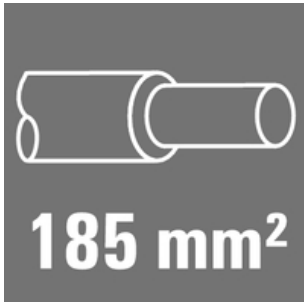
Klingenbergstraße 26

D-32758 Detmold

Germany

www.weidmueller.com

## Accessories

185 mm<sup>2</sup>

**The use of insulated connectors guarantees users consistent electrical connection quality in the long term.**

- Wide range of insulated and non-insulated cable lugs and connectors
- Tubular cable lugs according to current market standards (Euroseries)
- Compression cable lugs acc. to DIN 46235
- Sheet metal cable lugs acc. to DIN 46234
- Insulated ring cable lugs to DIN 46237
- Insulated pin cable lugs to DIN 46231

## General ordering data

Type	KRN-M10/-185 S	Version
Order No.	<a href="#">1494980000</a>	cable lug, terminal end, 185 mm <sup>2</sup>
GTIN (EAN)	4050118304497	
Qty.	10 pc(s).	
Type	KRN-M12/-185 S	Version
Order No.	<a href="#">1494990000</a>	cable lug, terminal end, 185 mm <sup>2</sup>
GTIN (EAN)	4050118304169	
Qty.	10 pc(s).	
Type	KRN-M16/-185 S	Version
Order No.	<a href="#">1495000000</a>	cable lug, terminal end, 185 mm <sup>2</sup>
GTIN (EAN)	4050118304367	
Qty.	10 pc(s).	

185 mm<sup>2</sup>

**The use of insulated connectors guarantees users consistent electrical connection quality in the long term.**

- Wide range of insulated and non-insulated cable lugs and connectors
- Tubular cable lugs according to current market standards (Euroseries)
- Compression cable lugs acc. to DIN 46235
- Sheet metal cable lugs acc. to DIN 46234
- Insulated ring cable lugs to DIN 46237
- Insulated pin cable lugs to DIN 46231

## General ordering data

Type	VSTN/-185	Version
Order No.	<a href="#">1497390000</a>	cable lug, terminal end, 185 mm <sup>2</sup> , 185 mm <sup>2</sup>
GTIN (EAN)	4050118306798	
Qty.	25 pc(s).	

## ES EPG/HPG 60 WM 185

**Weidmüller Interface GmbH & Co. KG**  
Klingenbergstraße 26  
D-32758 Detmold  
Germany

[www.weidmueller.com](http://www.weidmueller.com)

## Accessories

### Tools



#### **Crimping tools for cable lugs, connectors and wire-end ferrules with interchangeable inserts**

- extremely fast processing thanks to hydraulic support
- large processing range up to 400 mm<sup>2</sup>
- 360° revolving quick action crimping head
- automatic pressure limitation and monitoring via pressure sensor
- Additional features for APG series:
- electronic control and monitoring of the crimping process
- Saving of all crimping cycles and error messages to internal memory
- Reading of all cycles and error messages via USB

#### **General ordering data**

Type	HPG 60	Version
Order No.	<a href="#">2453820000</a>	6mm <sup>2</sup> , 300mm <sup>2</sup> , Hexagonal crimp, WM crimp, Indent crimp,
GTIN (EAN)	4050118468427	Trapezoidal crimp, Oval crimping
Qty.	1 pc(s).	

### Tools



#### **Crimping tools for cable lugs, connectors and wire-end ferrules with interchangeable inserts**

- extremely fast processing thanks to hydraulic support
- large processing range up to 300 mm<sup>2</sup>
- 270° revolving quick-action crimping head
- automatic pressure limitation and monitoring via pressure sensor
- electronic control and monitoring of the crimping process
- Saving of all crimping cycles and error messages to internal memory
- Reading of all cycles and error messages via USB
- Li-ion rechargeable battery with charge status indicator: 18 V, 2 Ah

#### **General ordering data**

Type	EPG 60	Version
Order No.	<a href="#">2453810000</a>	Pressing tools, Tools, Pressing tool, 6mm <sup>2</sup> , 300mm <sup>2</sup> , Hexagonal crimp,
GTIN (EAN)	4050118468434	WM crimp, Indent crimp, Trapezoidal crimp, Oval crimping
Qty.	1 pc(s).	

## ES EPG/HPG 60 WM 185

Weidmüller Interface GmbH &amp; Co. KG

Klingenbergstraße 26

D-32758 Detmold

Germany

www.weidmueller.com

## Accessories

185 mm<sup>2</sup>

**The use of insulated connectors guarantees users consistent electrical connection quality in the long term.**

- Wide range of insulated and non-insulated cable lugs and connectors
- Tubular cable lugs according to current market standards (Euroseries)
- Compression cable lugs acc. to DIN 46235
- Sheet metal cable lugs acc. to DIN 46234
- Insulated ring cable lugs to DIN 46237
- Insulated pin cable lugs to DIN 46231

## General ordering data

Type	KWN-M12/-185 90	Version
Order No.	<a href="#">1494550000</a>	cable lug, terminal end, 185 mm <sup>2</sup>
GTIN (EAN)	4050118304213	
Qty.	25 pc(s).	
Type	KWN-M20/-185 90	Version
Order No.	<a href="#">1494580000</a>	cable lug, terminal end, 185 mm <sup>2</sup>
GTIN (EAN)	4050118304336	
Qty.	25 pc(s).	
Type	KWN-M10/-185 90	Version
Order No.	<a href="#">1494540000</a>	cable lug, terminal end, 185 mm <sup>2</sup>
GTIN (EAN)	4050118304176	
Qty.	25 pc(s).	
Type	KWN-M16/-185 90	Version
Order No.	<a href="#">1494570000</a>	cable lug, terminal end, 185 mm <sup>2</sup>
GTIN (EAN)	4050118304329	
Qty.	25 pc(s).	

185 mm<sup>2</sup>

**The use of insulated connectors guarantees users consistent electrical connection quality in the long term.**

- Wide range of insulated and non-insulated cable lugs and connectors
- Tubular cable lugs according to current market standards (Euroseries)
- Compression cable lugs acc. to DIN 46235
- Sheet metal cable lugs acc. to DIN 46234
- Insulated ring cable lugs to DIN 46237
- Insulated pin cable lugs to DIN 46231

## General ordering data

Type	KP-M20/-185	Version
Order No.	<a href="#">1498380000</a>	cable lug, terminal end, 185 mm <sup>2</sup>
GTIN (EAN)	4050118307757	
Qty.	25 pc(s).	

## ES EPG/HPG 60 WM 185

Weidmüller Interface GmbH &amp; Co. KG

Klingenbergstraße 26

D-32758 Detmold

Germany

www.weidmueller.com

## Accessories

Type	KP-M10/-185	Version
Order No.	<a href="#">1498350000</a>	cable lug, terminal end, 185 mm <sup>2</sup>
GTIN (EAN)	4050118307665	
Qty.	25 pc(s).	
Type	KP-M8/-185	Version
Order No.	<a href="#">1498540000</a>	cable lug, terminal end, 185 mm <sup>2</sup>
GTIN (EAN)	4050118307894	
Qty.	25 pc(s).	
Type	KP-M16/-185	Version
Order No.	<a href="#">1498370000</a>	cable lug, terminal end, 185 mm <sup>2</sup>
GTIN (EAN)	4050118307733	
Qty.	25 pc(s).	
Type	KP-M14/-185	Version
Order No.	<a href="#">1498590000</a>	cable lug, terminal end, 185 mm <sup>2</sup>
GTIN (EAN)	4050118307887	
Qty.	25 pc(s).	
Type	KP-M12/-185	Version
Order No.	<a href="#">1498360000</a>	cable lug, terminal end, 185 mm <sup>2</sup>
GTIN (EAN)	4050118307726	
Qty.	25 pc(s).	

185 mm<sup>2</sup>

**The use of insulated connectors guarantees users consistent electrical connection quality in the long term.**

- Wide range of insulated and non-insulated cable lugs and connectors
- Tubular cable lugs according to current market standards (Euroseries)
- Compression cable lugs acc. to DIN 46235
- Sheet metal cable lugs acc. to DIN 46234
- Insulated ring cable lugs to DIN 46237
- Insulated pin cable lugs to DIN 46231

## General ordering data

Type	KWN-M16/-185 45	Version
Order No.	<a href="#">1495370000</a>	cable lug, terminal end, 185 mm <sup>2</sup>
GTIN (EAN)	4050118305074	
Qty.	20 pc(s).	
Type	KWN-M10/-185 45	Version
Order No.	<a href="#">1495340000</a>	cable lug, terminal end, 185 mm <sup>2</sup>
GTIN (EAN)	4050118304589	
Qty.	20 pc(s).	
Type	KWN-M12/-185 45	Version
Order No.	<a href="#">1495350000</a>	cable lug, terminal end, 185 mm <sup>2</sup>
GTIN (EAN)	4050118305012	
Qty.	20 pc(s).	
Type	KWN-M20/-185 45	Version
Order No.	<a href="#">1495380000</a>	cable lug, terminal end, 185 mm <sup>2</sup>
GTIN (EAN)	4050118305135	
Qty.	20 pc(s).	

## ES EPG/HPG 60 WM 185

Weidmüller Interface GmbH &amp; Co. KG

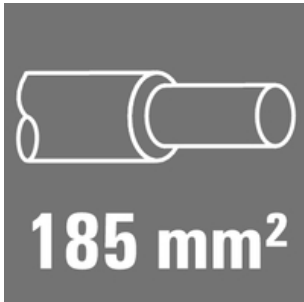
Klingenbergstraße 26

D-32758 Detmold

Germany

www.weidmueller.com

## Accessories

185 mm<sup>2</sup>

**The use of insulated connectors guarantees users consistent electrical connection quality in the long term.**

- Wide range of insulated and non-insulated cable lugs and connectors
- Tubular cable lugs according to current market standards (Euroseries)
- Compression cable lugs acc. to DIN 46235
- Sheet metal cable lugs acc. to DIN 46234
- Insulated ring cable lugs to DIN 46237
- Insulated pin cable lugs to DIN 46231

## General ordering data

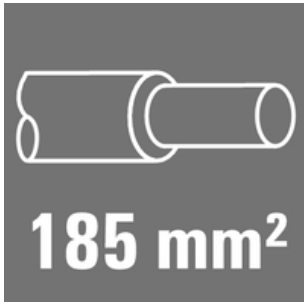
Type	KRN-M20/-185	Version
Order No.	<a href="#">1495470000</a>	cable lug, terminal end, 185 mm <sup>2</sup>
GTIN (EAN)	4050118305005	
Qty.	25 pc(s).	
Type	KRN-M10/-185	Version
Order No.	<a href="#">1495430000</a>	cable lug, terminal end, 185 mm <sup>2</sup>
GTIN (EAN)	4050118304985	
Qty.	25 pc(s).	
Type	KRN-M14/-185	Version
Order No.	<a href="#">1497250000</a>	cable lug, terminal end, 185 mm <sup>2</sup>
GTIN (EAN)	4050118306880	
Qty.	25 pc(s).	
Type	KRN-M16/-185	Version
Order No.	<a href="#">1495450000</a>	cable lug, terminal end, 185 mm <sup>2</sup>
GTIN (EAN)	4050118305036	
Qty.	25 pc(s).	
Type	KRN-M12/-185	Version
Order No.	<a href="#">1495440000</a>	cable lug, terminal end, 185 mm <sup>2</sup>
GTIN (EAN)	4050118304947	
Qty.	25 pc(s).	
Type	KRN-M8/-185	Version
Order No.	<a href="#">1497290000</a>	cable lug, terminal end, 185 mm <sup>2</sup>
GTIN (EAN)	4050118306897	
Qty.	25 pc(s).	

**ES EPG/HPG 60 WM 185****Weidmüller Interface GmbH & Co. KG**

Klingenbergstraße 26

D-32758 Detmold

Germany

[www.weidmueller.com](http://www.weidmueller.com)**Accessories****185 mm<sup>2</sup>**

**The use of insulated connectors guarantees users consistent electrical connection quality in the long term.**

- Wide range of insulated and non-insulated cable lugs and connectors
- Tubular cable lugs according to current market standards (Euroseries)
- Compression cable lugs acc. to DIN 46235
- Sheet metal cable lugs acc. to DIN 46234
- Insulated ring cable lugs to DIN 46237
- Insulated pin cable lugs to DIN 46231

**General ordering data**

Type	VPN/-185	Version
Order No.	<a href="#">1498720000</a>	cable lug, terminal end, 185 mm <sup>2</sup> , 185 mm <sup>2</sup>
GTIN (EAN)	4050118308051	
Qty.	25 pc(s).	