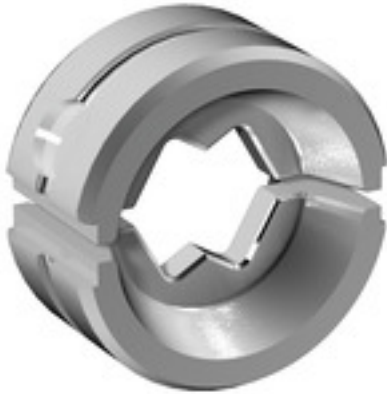


**ES EPG/HPG 60 WM 150****Weidmüller Interface GmbH & Co. KG**

Klingenbergstraße 26

D-32758 Detmold

Germany

[www.weidmueller.com](http://www.weidmueller.com)**Similar to illustration****Crimping tools for cable lugs, connectors and wire-end ferrules with interchangeable inserts**

- extremely fast processing thanks to hydraulic support
- large processing range up to 300 mm<sup>2</sup>
- 270° revolving quick-action crimping head
- automatic pressure limitation and monitoring via pressure sensor
- electronic control and monitoring of the crimping process
- Saving of all crimping cycles and error messages to internal memory
- Reading of all cycles and error messages via USB
- Li-ion rechargeable battery with charge status indicator: 18 V, 2 Ah

**General ordering data**

Version	Crimping tool insert, WM crimp
Order No.	<a href="#">2469620000</a>
Type	ES EPG/HPG 60 WM 150
GTIN (EAN)	4050118483871
Qty.	1 pc(s).

## ES EPG/HPG 60 WM 150

Weidmüller Interface GmbH &amp; Co. KG

Klingenbergstraße 26

D-32758 Detmold

Germany

www.weidmueller.com

## Technical data

## Dimensions and weights

Depth	22 mm	Depth (inches)	0.866 inch
Height	42 mm	Height (inches)	1.654 inch
Width	42 mm	Width (inches)	1.654 inch
Net weight	134 g		

## Crimp inserts

Crimp cross-section copper	150	Crimping width	5 mm
Crimping width in mm	5		

## Description of contact

Conductor cross-section, max. AWG	5/0	Type of contact	Euro series cable lug
-----------------------------------	-----	-----------------	-----------------------

## tool data crimping

Cable lug cross section	nominal	150 mm <sup>2</sup>
Crimping type/profile	WM crimp	

## Classifications

ETIM 6.0	EC001282	ETIM 7.0	EC001282
ETIM 8.0	EC001282	ETIM 9.0	EC001282
ECLASS 9.0	21-04-90-90	ECLASS 9.1	21-01-90-90
ECLASS 10.0	21-04-90-90	ECLASS 11.0	21-04-90-90
ECLASS 12.0	21-04-90-90	ECLASS 13.0	21-04-90-90
ECLASS 14.0	21-04-90-90		

## Environmental Product Compliance

REACH SVHC	/
RoHS Compliance Status	Compliant without exemption

## Downloads

Catalogues	<a href="#">Catalogues in PDF-format</a>
------------	--

## ES EPG/HPG 60 WM 150

**Weidmüller Interface GmbH & Co. KG**  
Klingenbergstraße 26  
D-32758 Detmold  
Germany

www.weidmueller.com

## Accessories

### Tools



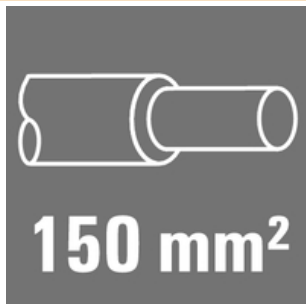
#### Crimping tools for cable lugs, connectors and wire-end ferrules with interchangeable inserts

- extremely fast processing thanks to hydraulic support
- large processing range up to 400 mm<sup>2</sup>
- 360° revolving quick action crimping head
- automatic pressure limitation and monitoring via pressure sensor
- Additional features for APG series:
- electronic control and monitoring of the crimping process
- Saving of all crimping cycles and error messages to internal memory
- Reading of all cycles and error messages via USB

#### General ordering data

Type	HPG 60	Version
Order No.	<a href="#">2453820000</a>	6mm <sup>2</sup> , 300mm <sup>2</sup> , Hexagonal crimp, WM crimp, Indent crimp,
GTIN (EAN)	4050118468427	Trapezoidal crimp, Oval crimping
Qty.	1 pc(s).	

### 150 mm<sup>2</sup>



#### The use of insulated connectors guarantees users consistent electrical connection quality in the long term.

- Wide range of insulated and non-insulated cable lugs and connectors
- Tubular cable lugs according to current market standards (Euroseries)
- Compression cable lugs acc. to DIN 46235
- Sheet metal cable lugs acc. to DIN 46234
- Insulated ring cable lugs to DIN 46237
- Insulated pin cable lugs to DIN 46231

#### General ordering data

Type	KWN-M10/-150 45	Version
Order No.	<a href="#">1496440000</a>	cable lug, terminal end, 150 mm <sup>2</sup>
GTIN (EAN)	4050118305777	
Qty.	25 pc(s).	
Type	KWN-M20/-150 45	Version
Order No.	<a href="#">1496480000</a>	cable lug, terminal end, 150 mm <sup>2</sup>
GTIN (EAN)	4050118305739	
Qty.	25 pc(s).	
Type	KWN-M8/-150 45	Version
Order No.	<a href="#">1496430000</a>	cable lug, terminal end, 150 mm <sup>2</sup>
GTIN (EAN)	4050118306071	
Qty.	25 pc(s).	
Type	KWN-M12/-150 45	Version
Order No.	<a href="#">1496450000</a>	cable lug, terminal end, 150 mm <sup>2</sup>
GTIN (EAN)	4050118305906	
Qty.	25 pc(s).	

## ES EPG/HPG 60 WM 150

Weidmüller Interface GmbH &amp; Co. KG

Klingenbergstraße 26

D-32758 Detmold

Germany

www.weidmueller.com

## Accessories

Type	KWN-M16/-150 45	Version
Order No.	<a href="#">1496470000</a>	cable lug, terminal end, 150 mm <sup>2</sup>
GTIN (EAN)	4050118306132	
Qty.	25 pc(s).	

150 mm<sup>2</sup>

**The use of insulated connectors guarantees users consistent electrical connection quality in the long term.**

- Wide range of insulated and non-insulated cable lugs and connectors
- Tubular cable lugs according to current market standards (Euroseries)
- Compression cable lugs acc. to DIN 46235
- Sheet metal cable lugs acc. to DIN 46234
- Insulated ring cable lugs to DIN 46237
- Insulated pin cable lugs to DIN 46231

## General ordering data

Type	VPLN/-150	Version
Order No.	<a href="#">1492970000</a>	cable lug, terminal end, 150 mm <sup>2</sup> , 150 mm <sup>2</sup>
GTIN (EAN)	4050118302912	
Qty.	50 pc(s).	

150 mm<sup>2</sup>

**The use of insulated connectors guarantees users consistent electrical connection quality in the long term.**

- Wide range of insulated and non-insulated cable lugs and connectors
- Tubular cable lugs according to current market standards (Euroseries)
- Compression cable lugs acc. to DIN 46235
- Sheet metal cable lugs acc. to DIN 46234
- Insulated ring cable lugs to DIN 46237
- Insulated pin cable lugs to DIN 46231

## General ordering data

Type	KRN-M16/-150	Version
Order No.	<a href="#">1495730000</a>	cable lug, terminal end, 150 mm <sup>2</sup>
GTIN (EAN)	4050118305395	
Qty.	25 pc(s).	
Type	KRN-M14/-150	Version
Order No.	<a href="#">1495810000</a>	cable lug, terminal end, 150 mm <sup>2</sup>
GTIN (EAN)	4050118305500	
Qty.	25 pc(s).	
Type	KRN-M12/-150	Version
Order No.	<a href="#">1495720000</a>	cable lug, terminal end, 150 mm <sup>2</sup>
GTIN (EAN)	4050118305296	
Qty.	25 pc(s).	

## ES EPG/HPG 60 WM 150

**Weidmüller Interface GmbH & Co. KG**

Klingenbergstraße 26

D-32758 Detmold

Germany

[www.weidmueller.com](http://www.weidmueller.com)

## Accessories

Type	KRN-M8/-150	Version
Order No.	<a href="#">1495700000</a>	cable lug, terminal end, 150 mm <sup>2</sup>
GTIN (EAN)	4050118305333	
Qty.	25 pc(s).	
Type	KRN-M10/-150	Version
Order No.	<a href="#">1495710000</a>	cable lug, terminal end, 150 mm <sup>2</sup>
GTIN (EAN)	4050118305159	
Qty.	25 pc(s).	
Type	KRN-M20/-150	Version
Order No.	<a href="#">1495740000</a>	cable lug, terminal end, 150 mm <sup>2</sup>
GTIN (EAN)	4050118305357	
Qty.	25 pc(s).	

## Tools



### Crimping tools for cable lugs, connectors and wire-end ferrules with interchangeable inserts

- extremely fast processing thanks to hydraulic support
- large processing range up to 300 mm<sup>2</sup>
- 270° revolving quick-action crimping head
- automatic pressure limitation and monitoring via pressure sensor
- electronic control and monitoring of the crimping process
- Saving of all crimping cycles and error messages to internal memory
- Reading of all cycles and error messages via USB
- Li-ion rechargeable battery with charge status indicator: 18 V, 2 Ah

## General ordering data

Type	EPG 60	Version
Order No.	<a href="#">2453810000</a>	Pressing tools, Tools, Pressing tool, 6mm <sup>2</sup> , 300mm <sup>2</sup> , Hexagonal crimp,
GTIN (EAN)	4050118468434	WM crimp, Indent crimp, Trapezoidal crimp, Oval crimping
Qty.	1 pc(s).	

## ES EPG/HPG 60 WM 150

Weidmüller Interface GmbH &amp; Co. KG

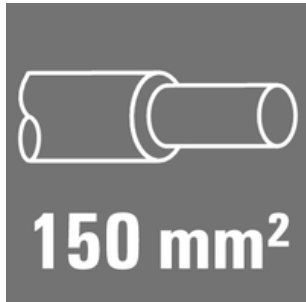
Klingenbergstraße 26

D-32758 Detmold

Germany

www.weidmueller.com

## Accessories

150 mm<sup>2</sup>

**The use of insulated connectors guarantees users consistent electrical connection quality in the long term.**

- Wide range of insulated and non-insulated cable lugs and connectors
- Tubular cable lugs according to current market standards (Euroseries)
- Compression cable lugs acc. to DIN 46235
- Sheet metal cable lugs acc. to DIN 46234
- Insulated ring cable lugs to DIN 46237
- Insulated pin cable lugs to DIN 46231

## General ordering data

Type	KRN-M8/-150 S	Version
Order No.	<a href="#">1494940000</a>	cable lug, terminal end, 150 mm <sup>2</sup>
GTIN (EAN)	4050118304701	
Qty.	10 pc(s).	
Type	KRN-M6/-150 S	Version
Order No.	<a href="#">1494440000</a>	cable lug, terminal end, 150 mm <sup>2</sup>
GTIN (EAN)	4050118303964	
Qty.	10 pc(s).	
Type	KRN-M12/-150 S	Version
Order No.	<a href="#">1494970000</a>	cable lug, terminal end, 150 mm <sup>2</sup>
GTIN (EAN)	4050118304459	
Qty.	10 pc(s).	
Type	KRN-M10/-150 S	Version
Order No.	<a href="#">1494950000</a>	cable lug, terminal end, 150 mm <sup>2</sup>
GTIN (EAN)	4050118304473	
Qty.	10 pc(s).	

150 mm<sup>2</sup>

**The use of insulated connectors guarantees users consistent electrical connection quality in the long term.**

- Wide range of insulated and non-insulated cable lugs and connectors
- Tubular cable lugs according to current market standards (Euroseries)
- Compression cable lugs acc. to DIN 46235
- Sheet metal cable lugs acc. to DIN 46234
- Insulated ring cable lugs to DIN 46237
- Insulated pin cable lugs to DIN 46231

## General ordering data

Type	VSTN/-150	Version
Order No.	<a href="#">1497380000</a>	cable lug, terminal end, 150 mm <sup>2</sup> , 150 mm <sup>2</sup>
GTIN (EAN)	4050118306958	
Qty.	25 pc(s).	

## ES EPG/HPG 60 WM 150

Weidmüller Interface GmbH &amp; Co. KG

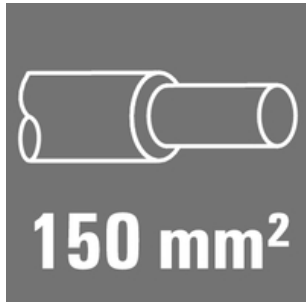
Klingenbergstraße 26

D-32758 Detmold

Germany

www.weidmueller.com

## Accessories

150 mm<sup>2</sup>

**The use of insulated connectors guarantees users consistent electrical connection quality in the long term.**

- Wide range of insulated and non-insulated cable lugs and connectors
- Tubular cable lugs according to current market standards (Euroseries)
- Compression cable lugs acc. to DIN 46235
- Sheet metal cable lugs acc. to DIN 46234
- Insulated ring cable lugs to DIN 46237
- Insulated pin cable lugs to DIN 46231

## General ordering data

Type	VPN/-150	Version
Order No.	<a href="#">1498710000</a>	cable lug, terminal end, 150 mm <sup>2</sup> , 150 mm <sup>2</sup>
GTIN (EAN)	4050118308129	
Qty.	25 pc(s).	

150 mm<sup>2</sup>

**The use of insulated connectors guarantees users consistent electrical connection quality in the long term.**

- Wide range of insulated and non-insulated cable lugs and connectors
- Tubular cable lugs according to current market standards (Euroseries)
- Compression cable lugs acc. to DIN 46235
- Sheet metal cable lugs acc. to DIN 46234
- Insulated ring cable lugs to DIN 46237
- Insulated pin cable lugs to DIN 46231

## General ordering data

Type	KWPN-M16/-150 90	Version
Order No.	<a href="#">1497830000</a>	cable lug, terminal end, 150 mm <sup>2</sup>
GTIN (EAN)	4050118307160	
Qty.	25 pc(s).	
Type	KWPN-M10/-150 90	Version
Order No.	<a href="#">1497810000</a>	cable lug, terminal end, 150 mm <sup>2</sup>
GTIN (EAN)	4050118307221	
Qty.	25 pc(s).	
Type	KWPN-M12/-150 90	Version
Order No.	<a href="#">1497820000</a>	cable lug, terminal end, 150 mm <sup>2</sup>
GTIN (EAN)	4050118307306	
Qty.	25 pc(s).	
Type	KWPN-M8/-150 90	Version
Order No.	<a href="#">1497790000</a>	cable lug, terminal end, 150 mm <sup>2</sup>
GTIN (EAN)	4050118307085	
Qty.	25 pc(s).	

## ES EPG/HPG 60 WM 150

Weidmüller Interface GmbH &amp; Co. KG

Klingenbergstraße 26

D-32758 Detmold

Germany

www.weidmueller.com

## Accessories

Type	KWPN-M20/150 90	Version
Order No.	<a href="#">1496680000</a>	cable lug, terminal end, 150 mm <sup>2</sup>
GTIN (EAN)	4050118306088	
Qty.	25 pc(s).	

150 mm<sup>2</sup>

**The use of insulated connectors guarantees users consistent electrical connection quality in the long term.**

- Wide range of insulated and non-insulated cable lugs and connectors
- Tubular cable lugs according to current market standards (Euroseries)
- Compression cable lugs acc. to DIN 46235
- Sheet metal cable lugs acc. to DIN 46234
- Insulated ring cable lugs to DIN 46237
- Insulated pin cable lugs to DIN 46231

## General ordering data

Type	VSTN/150	Version
Order No.	<a href="#">1493120000</a>	cable lug, terminal end, 150 mm <sup>2</sup> , 150 mm <sup>2</sup>
GTIN (EAN)	4050118302905	
Qty.	50 pc(s).	

150 mm<sup>2</sup>

**The use of insulated connectors guarantees users consistent electrical connection quality in the long term.**

- Wide range of insulated and non-insulated cable lugs and connectors
- Tubular cable lugs according to current market standards (Euroseries)
- Compression cable lugs acc. to DIN 46235
- Sheet metal cable lugs acc. to DIN 46234
- Insulated ring cable lugs to DIN 46237
- Insulated pin cable lugs to DIN 46231

## General ordering data

Type	KWN-M10/150 90	Version
Order No.	<a href="#">1494500000</a>	cable lug, terminal end, 150 mm <sup>2</sup>
GTIN (EAN)	4050118303896	
Qty.	25 pc(s).	
Type	KWN-M12/-150 90	Version
Order No.	<a href="#">1494510000</a>	cable lug, terminal end, 150 mm <sup>2</sup>
GTIN (EAN)	4050118304305	
Qty.	25 pc(s).	
Type	KWN-M8/-150 90	Version
Order No.	<a href="#">1494490000</a>	cable lug, terminal end, 150 mm <sup>2</sup>
GTIN (EAN)	4050118304107	
Qty.	25 pc(s).	



## ES EPG/HPG 60 WM 150

Weidmüller Interface GmbH &amp; Co. KG

Klingenbergstraße 26

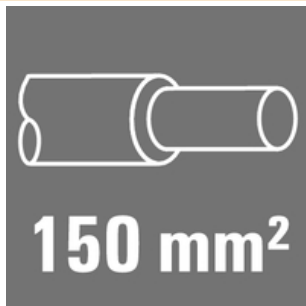
D-32758 Detmold

Germany

www.weidmueller.com

## Accessories

Type	KWN-M20/-150 90	Version
Order No.	<a href="#">1494530000</a>	cable lug, terminal end, 150 mm <sup>2</sup>
GTIN (EAN)	4050118304206	
Qty.	25 pc(s).	
Type	KWN-M16/-150 90	Version
Order No.	<a href="#">1494520000</a>	cable lug, terminal end, 150 mm <sup>2</sup>
GTIN (EAN)	4050118303995	
Qty.	25 pc(s).	

150 mm<sup>2</sup>

**The use of insulated connectors guarantees users consistent electrical connection quality in the long term.**

- Wide range of insulated and non-insulated cable lugs and connectors
- Tubular cable lugs according to current market standards (Euroseries)
- Compression cable lugs acc. to DIN 46235
- Sheet metal cable lugs acc. to DIN 46234
- Insulated ring cable lugs to DIN 46237
- Insulated pin cable lugs to DIN 46231

## General ordering data

Type	KP-M14/-150	Version
Order No.	<a href="#">1498580000</a>	cable lug, terminal end, 150 mm <sup>2</sup>
GTIN (EAN)	4050118308112	
Qty.	25 pc(s).	
Type	KP-M8/-150	Version
Order No.	<a href="#">1498290000</a>	cable lug, terminal end, 150 mm <sup>2</sup>
GTIN (EAN)	4050118307399	
Qty.	25 pc(s).	
Type	KP-M12/-150	Version
Order No.	<a href="#">1498320000</a>	cable lug, terminal end, 150 mm <sup>2</sup>
GTIN (EAN)	4050118307658	
Qty.	25 pc(s).	
Type	KP-M16/-150	Version
Order No.	<a href="#">1498330000</a>	cable lug, terminal end, 150 mm <sup>2</sup>
GTIN (EAN)	4050118307641	
Qty.	25 pc(s).	
Type	KP-M10/-150	Version
Order No.	<a href="#">1498310000</a>	cable lug, terminal end, 150 mm <sup>2</sup>
GTIN (EAN)	4050118307801	
Qty.	25 pc(s).	
Type	KP-M20/-150	Version
Order No.	<a href="#">1498340000</a>	cable lug, terminal end, 150 mm <sup>2</sup>
GTIN (EAN)	4050118307740	
Qty.	25 pc(s).	