

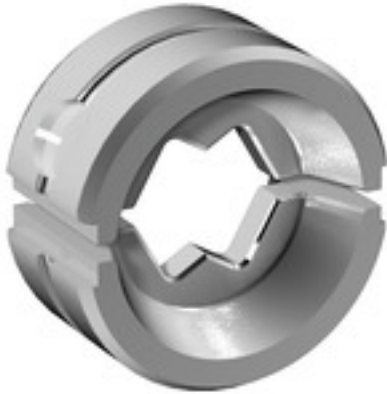
ES EPG/HPG 60 WM 25**Weidmüller Interface GmbH & Co. KG**

Klingenbergstraße 26

D-32758 Detmold

Germany

www.weidmueller.com

Similar to illustration**Crimping tools for cable lugs, connectors and wire-end ferrules with interchangeable inserts**

- extremely fast processing thanks to hydraulic support
- large processing range up to 300 mm²
- 270° revolving quick-action crimping head
- automatic pressure limitation and monitoring via pressure sensor
- electronic control and monitoring of the crimping process
- Saving of all crimping cycles and error messages to internal memory
- Reading of all cycles and error messages via USB
- Li-ion rechargeable battery with charge status indicator: 18 V, 2 Ah

General ordering data

Version	Crimping tool insert, WM crimp
Order No.	2469560000
Type	ES EPG/HPG 60 WM 25
GTIN (EAN)	4050118483840
Qty.	1 pc(s).

ES EPG/HPG 60 WM 25**Weidmüller Interface GmbH & Co. KG**

Klingenbergstraße 26

D-32758 Detmold

Germany

www.weidmueller.com**Technical data****Dimensions and weights**

Depth	22 mm	Depth (inches)	0.866 inch
Height	42 mm	Height (inches)	1.654 inch
Width	42 mm	Width (inches)	1.654 inch
Net weight	167 g		

Crimp inserts

Crimp cross-section copper	25	Crimping width	12 mm
Crimping width in mm	12		

Description of contact

Conductor cross-section, max. AWG	4	Type of contact	Euro series cable lug
-----------------------------------	---	-----------------	-----------------------

tool data crimping

Cable lug cross section	nominal	25 mm ²
Crimping type/profile	WM crimp	

Classifications

ETIM 6.0	EC001282	ETIM 7.0	EC001282
ETIM 8.0	EC001282	ETIM 9.0	EC001282
ECLASS 9.0	21-04-90-90	ECLASS 9.1	21-01-90-90
ECLASS 10.0	21-04-90-90	ECLASS 11.0	21-04-90-90
ECLASS 12.0	21-04-90-90	ECLASS 13.0	21-04-90-90

Downloads

Catalogues	Catalogues in PDF-format
------------	--

ES EPG/HPG 60 WM 25

Weidmüller Interface GmbH & Co. KG

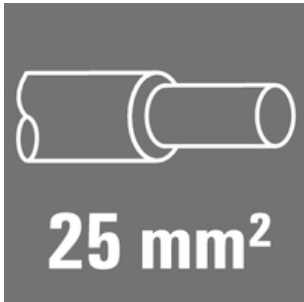
Klingenbergstraße 26

D-32758 Detmold

Germany

www.weidmueller.com

Accessories

25 mm²

The use of insulated connectors guarantees users consistent electrical connection quality in the long term.

- Wide range of insulated and non-insulated cable lugs and connectors
- Tubular cable lugs according to current market standards (Euroseries)
- Compression cable lugs acc. to DIN 46235
- Sheet metal cable lugs acc. to DIN 46234
- Insulated ring cable lugs to DIN 46237
- Insulated pin cable lugs to DIN 46231

General ordering data

Type	KP-M8/-25	Version
Order No.	1497980000	cable lug, terminal end, 25 mm ²
GTIN (EAN)	4050118307528	
Qty.	100 pc(s).	
Type	KP-M16/-25	Version
Order No.	1498010000	cable lug, terminal end, 25 mm ²
GTIN (EAN)	4050118307443	
Qty.	100 pc(s).	
Type	KP-M12/-25	Version
Order No.	1498000000	cable lug, terminal end, 25 mm ²
GTIN (EAN)	4050118307504	
Qty.	100 pc(s).	
Type	KP-M6/-25	Version
Order No.	1497970000	cable lug, terminal end, 25 mm ²
GTIN (EAN)	4050118307412	
Qty.	100 pc(s).	
Type	KP-M10/-25	Version
Order No.	1497990000	cable lug, terminal end, 25 mm ²
GTIN (EAN)	4050118307535	
Qty.	100 pc(s).	

ES EPG/HPG 60 WM 25

Weidmüller Interface GmbH & Co. KG

Klingenbergstraße 26

D-32758 Detmold

Germany

www.weidmueller.com

Accessories

25 mm²

The use of insulated connectors guarantees users consistent electrical connection quality in the long term.

- Wide range of insulated and non-insulated cable lugs and connectors
- Tubular cable lugs according to current market standards (Euroseries)
- Compression cable lugs acc. to DIN 46235
- Sheet metal cable lugs acc. to DIN 46234
- Insulated ring cable lugs to DIN 46237
- Insulated pin cable lugs to DIN 46231

General ordering data

Type	KWN-M12/-25 90	Version
Order No.	1495890000	cable lug, terminal end, 25 mm ²
GTIN (EAN)	4050118305647	
Qty.	100 pc(s).	
Type	KWN-M8/-25 90	Version
Order No.	1495870000	cable lug, terminal end, 25 mm ²
GTIN (EAN)	4050118305470	
Qty.	100 pc(s).	
Type	KWN-M14/-25 90	Version
Order No.	1495900000	cable lug, terminal end, 25 mm ²
GTIN (EAN)	4050118305517	
Qty.	100 pc(s).	
Type	KWN-M10/-25 90	Version
Order No.	1495880000	cable lug, terminal end, 25 mm ²
GTIN (EAN)	4050118305449	
Qty.	100 pc(s).	
Type	KWN-M6/-25 90	Version
Order No.	1495850000	cable lug, terminal end, 25 mm ²
GTIN (EAN)	4050118305456	
Qty.	100 pc(s).	

ES EPG/HPG 60 WM 25

Weidmüller Interface GmbH & Co. KG

Klingenbergstraße 26

D-32758 Detmold

Germany

www.weidmueller.com

Accessories

Tools

**Crimping tools for cable lugs, connectors and wire-end ferrules with interchangeable inserts**

- extremely fast processing thanks to hydraulic support
- large processing range up to 300 mm²
- 270° revolving quick-action crimping head
- automatic pressure limitation and monitoring via pressure sensor
- electronic control and monitoring of the crimping process
- Saving of all crimping cycles and error messages to internal memory
- Reading of all cycles and error messages via USB
- Li-ion rechargeable battery with charge status indicator: 18 V, 2 Ah

General ordering data

Type	EPG 60	Version
Order No.	2453810000	Pressing tools, Tools, Pressing tool, 6mm ² , 300mm ² , Hexagonal crimp,
GTIN (EAN)	4050118468434	WM crimp, Indent crimp, Trapezoidal crimp, Oval crimping
Qty.	1 pc(s).	

25 mm²**The use of insulated connectors guarantees users consistent electrical connection quality in the long term.**

- Wide range of insulated and non-insulated cable lugs and connectors
- Tubular cable lugs according to current market standards (Euroseries)
- Compression cable lugs acc. to DIN 46235
- Sheet metal cable lugs acc. to DIN 46234
- Insulated ring cable lugs to DIN 46237
- Insulated pin cable lugs to DIN 46231

General ordering data

Type	KWN-M10/-25 45	Version
Order No.	1496200000	cable lug, terminal end, 25 mm ²
GTIN (EAN)	4050118305593	
Qty.	100 pc(s).	
Type	KWN-M6/-25 45	Version
Order No.	1496180000	cable lug, terminal end, 25 mm ²
GTIN (EAN)	4050118305876	
Qty.	100 pc(s).	
Type	KWN-M8/-25 45	Version
Order No.	1496190000	cable lug, terminal end, 25 mm ²
GTIN (EAN)	4050118306231	
Qty.	100 pc(s).	

ES EPG/HPG 60 WM 25

Weidmüller Interface GmbH & Co. KG

Klingenbergstraße 26

D-32758 Detmold

Germany

www.weidmueller.com

Accessories

Type	KWN-M12/-25 45	Version
Order No.	1496210000	cable lug, terminal end, 25 mm ²
GTIN (EAN)	4050118305715	
Qty.	100 pc(s).	

Tools



Crimping tools for cable lugs, connectors and wire-end ferrules with interchangeable inserts

- extremely fast processing thanks to hydraulic support
- large processing range up to 400 mm²
- 360° revolving quick action crimping head
- automatic pressure limitation and monitoring via pressure sensor
- Additional features for APG series:
- electronic control and monitoring of the crimping process
- Saving of all crimping cycles and error messages to internal memory
- Reading of all cycles and error messages via USB

General ordering data

Type	HPG 60	Version
Order No.	2453820000	6mm ² , 300mm ² , Hexagonal crimp, WM crimp, Indent crimp,
GTIN (EAN)	4050118468427	Trapezoidal crimp, Oval crimping
Qty.	1 pc(s).	

25 mm²



The use of insulated connectors guarantees users consistent electrical connection quality in the long term.

- Wide range of insulated and non-insulated cable lugs and connectors
- Tubular cable lugs according to current market standards (Euroseries)
- Compression cable lugs acc. to DIN 46235
- Sheet metal cable lugs acc. to DIN 46234
- Insulated ring cable lugs to DIN 46237
- Insulated pin cable lugs to DIN 46231

General ordering data

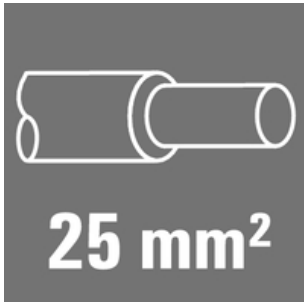
Type	VPLN/-25	Version
Order No.	1492910000	cable lug, terminal end, 25 mm ² , 25 mm ²
GTIN (EAN)	4050118302646	
Qty.	100 pc(s).	

ES EPG/HPG 60 WM 25**Weidmüller Interface GmbH & Co. KG**

Klingenbergstraße 26

D-32758 Detmold

Germany

www.weidmueller.com**Accessories****25 mm²**

The use of insulated connectors guarantees users consistent electrical connection quality in the long term.

- Wide range of insulated and non-insulated cable lugs and connectors
- Tubular cable lugs according to current market standards (Euroseries)
- Compression cable lugs acc. to DIN 46235
- Sheet metal cable lugs acc. to DIN 46234
- Insulated ring cable lugs to DIN 46237
- Insulated pin cable lugs to DIN 46231

General ordering data

Type	VPN/-25	Version
Order No.	1498640000	cable lug, terminal end, 25 mm ² , 25 mm ²
GTIN (EAN)	4050118308013	
Qty.	100 pc(s).	

25 mm²

The use of insulated connectors guarantees users consistent electrical connection quality in the long term.

- Wide range of insulated and non-insulated cable lugs and connectors
- Tubular cable lugs according to current market standards (Euroseries)
- Compression cable lugs acc. to DIN 46235
- Sheet metal cable lugs acc. to DIN 46234
- Insulated ring cable lugs to DIN 46237
- Insulated pin cable lugs to DIN 46231

General ordering data

Type	VSTN/-25	Version
Order No.	1494730000	cable lug, terminal end, 25 mm ² , 25 mm ²
GTIN (EAN)	4050118304275	
Qty.	50 pc(s).	

ES EPG/HPG 60 WM 25

Weidmüller Interface GmbH & Co. KG

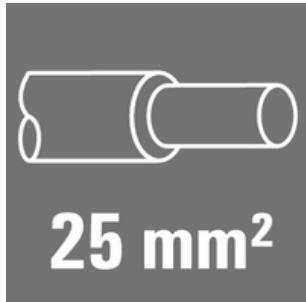
Klingenbergstraße 26

D-32758 Detmold

Germany

www.weidmueller.com

Accessories

25 mm²

The use of insulated connectors guarantees users consistent electrical connection quality in the long term.

- Wide range of insulated and non-insulated cable lugs and connectors
- Tubular cable lugs according to current market standards (Euroseries)
- Compression cable lugs acc. to DIN 46235
- Sheet metal cable lugs acc. to DIN 46234
- Insulated ring cable lugs to DIN 46237
- Insulated pin cable lugs to DIN 46231

General ordering data

Type	KQN-M8/-25	Version
Order No.	1494140000	cable lug, terminal end, 25 mm ²
GTIN (EAN)	4050118303872	
Qty.	50 pc(s).	
Type	KQN-M10/-25	Version
Order No.	1494150000	cable lug, terminal end, 25 mm ²
GTIN (EAN)	4050118303865	
Qty.	50 pc(s).	
Type	KQN-M12/-25	Version
Order No.	1494160000	cable lug, terminal end, 25 mm ²
GTIN (EAN)	4050118303902	
Qty.	50 pc(s).	
Type	KQN-M16/-25	Version
Order No.	1493490000	cable lug, terminal end, 25 mm ²
GTIN (EAN)	4050118303148	
Qty.	50 pc(s).	
Type	KQN-M6/-25	Version
Order No.	1494130000	cable lug, terminal end, 25 mm ²
GTIN (EAN)	4050118303858	
Qty.	50 pc(s).	
Type	KQN-M5/-25	Version
Order No.	1494120000	cable lug, terminal end, 25 mm ²
GTIN (EAN)	4050118303827	
Qty.	50 pc(s).	

ES EPG/HPG 60 WM 25

Weidmüller Interface GmbH & Co. KG

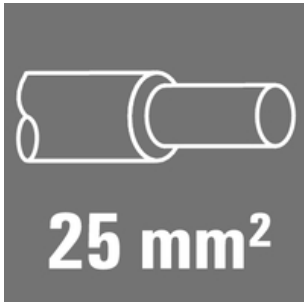
Klingenbergstraße 26

D-32758 Detmold

Germany

www.weidmueller.com

Accessories

25 mm²

The use of insulated connectors guarantees users consistent electrical connection quality in the long term.

- Wide range of insulated and non-insulated cable lugs and connectors
- Tubular cable lugs according to current market standards (Euroseries)
- Compression cable lugs acc. to DIN 46235
- Sheet metal cable lugs acc. to DIN 46234
- Insulated ring cable lugs to DIN 46237
- Insulated pin cable lugs to DIN 46231

General ordering data

Type	KWPN-M12/-25 90	Version
Order No.	1497530000	cable lug, terminal end, 25 mm ²
GTIN (EAN)	4050118307108	
Qty.	100 pc(s).	
Type	KWPN-M10/-25 90	Version
Order No.	1497520000	cable lug, terminal end, 25 mm ²
GTIN (EAN)	4050118306989	
Qty.	100 pc(s).	
Type	KWPN-M8/-25 90	Version
Order No.	1497510000	cable lug, terminal end, 25 mm ²
GTIN (EAN)	4050118306972	
Qty.	100 pc(s).	
Type	KWPN-M6/-25 90	Version
Order No.	1497490000	cable lug, terminal end, 25 mm ²
GTIN (EAN)	4050118306668	
Qty.	100 pc(s).	

25 mm²

The use of insulated connectors guarantees users consistent electrical connection quality in the long term.

- Wide range of insulated and non-insulated cable lugs and connectors
- Tubular cable lugs according to current market standards (Euroseries)
- Compression cable lugs acc. to DIN 46235
- Sheet metal cable lugs acc. to DIN 46234
- Insulated ring cable lugs to DIN 46237
- Insulated pin cable lugs to DIN 46231

General ordering data

Type	KSN/-25	Version
Order No.	1492800000	cable lug, terminal end, 25 mm ² , 25 mm ²
GTIN (EAN)	4050118302592	
Qty.	50 pc(s).	

ES EPG/HPG 60 WM 25

Weidmüller Interface GmbH & Co. KG

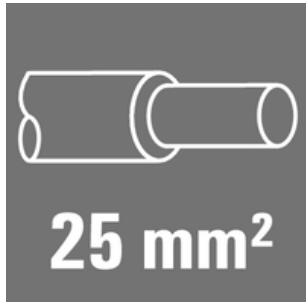
Klingenbergstraße 26

D-32758 Detmold

Germany

www.weidmueller.com

Accessories

25 mm²

The use of insulated connectors guarantees users consistent electrical connection quality in the long term.

- Wide range of insulated and non-insulated cable lugs and connectors
- Tubular cable lugs according to current market standards (Euroseries)
- Compression cable lugs acc. to DIN 46235
- Sheet metal cable lugs acc. to DIN 46234
- Insulated ring cable lugs to DIN 46237
- Insulated pin cable lugs to DIN 46231

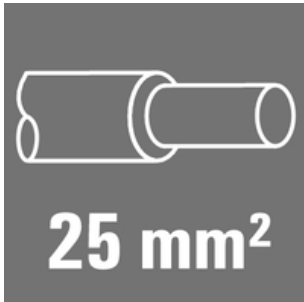
General ordering data

Type	KRN-M10/-25	Version
Order No.	1496510000	cable lug, terminal end, 25 mm ²
GTIN (EAN)	4050118305814	
Qty.	100 pc(s).	
Type	KRN-M5/-25	Version
Order No.	1495830000	cable lug, terminal end, 25 mm ²
GTIN (EAN)	4050118305562	
Qty.	100 pc(s).	
Type	KRN-M8/-25	Version
Order No.	1496500000	cable lug, terminal end, 25 mm ²
GTIN (EAN)	4050118305975	
Qty.	100 pc(s).	
Type	KRN-M6/-25	Version
Order No.	1496490000	cable lug, terminal end, 25 mm ²
GTIN (EAN)	4050118305784	
Qty.	100 pc(s).	
Type	KRN-M12/-25	Version
Order No.	1496520000	cable lug, terminal end, 25 mm ²
GTIN (EAN)	4050118306163	
Qty.	100 pc(s).	
Type	KRN-M14/-25	Version
Order No.	1496530000	cable lug, terminal end, 25 mm ²
GTIN (EAN)	4050118305883	
Qty.	100 pc(s).	

ES EPG/HPG 60 WM 25

Weidmüller Interface GmbH & Co. KG
Klingenbergstraße 26
D-32758 Detmold
Germany

www.weidmueller.com

Accessories**25 mm²**

The use of insulated connectors guarantees users consistent electrical connection quality in the long term.

- Wide range of insulated and non-insulated cable lugs and connectors
- Tubular cable lugs according to current market standards (Euroseries)
- Compression cable lugs acc. to DIN 46235
- Sheet metal cable lugs acc. to DIN 46234
- Insulated ring cable lugs to DIN 46237
- Insulated pin cable lugs to DIN 46231

General ordering data

Type	VSTN/25	Version
Order No.	1493050000	cable lug, terminal end, 25 mm ² , 25 mm ²
GTIN (EAN)	4050118302783	
Qty.	100 pc(s).	