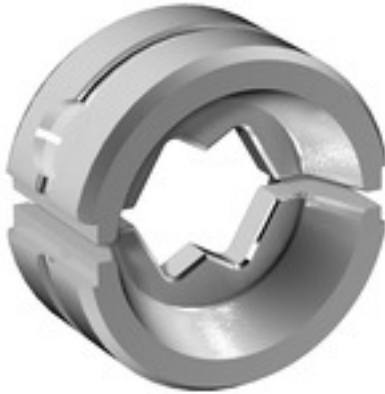


ES EPG/HPG 60 WM 10**Weidmüller Interface GmbH & Co. KG**

Klingenbergstraße 26

D-32758 Detmold

Germany

www.weidmueller.com**Similar to illustration****Crimping tools for cable lugs, connectors and wire-end ferrules with interchangeable inserts**

- extremely fast processing thanks to hydraulic support
- large processing range up to 300 mm²
- 270° revolving quick-action crimping head
- automatic pressure limitation and monitoring via pressure sensor
- electronic control and monitoring of the crimping process
- Saving of all crimping cycles and error messages to internal memory
- Reading of all cycles and error messages via USB
- Li-ion rechargeable battery with charge status indicator: 18 V, 2 Ah

General ordering data

Version	Crimping tool insert, WM crimp
Order No.	2469540000
Type	ES EPG/HPG 60 WM 10
GTIN (EAN)	4050118483819
Qty.	1 pc(s).

ES EPG/HPG 60 WM 10**Weidmüller Interface GmbH & Co. KG**

Klingenbergstraße 26

D-32758 Detmold

Germany

www.weidmueller.com**Technical data****Dimensions and weights**

Depth	22 mm	Depth (inches)	0.866 inch
Height	42 mm	Height (inches)	1.654 inch
Width	42 mm	Width (inches)	1.654 inch
Net weight	149 g		

Crimp inserts

Crimp cross-section copper	10	Crimping width	7 mm
Crimping width in mm	7		

Description of contact

Conductor cross-section, max. AWG	8	Type of contact	Euro series cable lug
-----------------------------------	---	-----------------	-----------------------

tool data crimping

Cable lug cross section	nominal	10 mm ²
Crimping type/profile	WM crimp	

Classifications

ETIM 6.0	EC001282	ETIM 7.0	EC001282
ETIM 8.0	EC001282	ETIM 9.0	EC001282
ECLASS 9.0	21-04-90-90	ECLASS 9.1	21-01-90-90
ECLASS 10.0	21-04-90-90	ECLASS 11.0	21-04-90-90
ECLASS 12.0	21-04-90-90	ECLASS 13.0	21-04-90-90
ECLASS 14.0	21-04-90-90		

Environmental Product Compliance

REACH SVHC	/
RoHS Compliance Status	Compliant without exemption

Downloads

Catalogues	Catalogues in PDF-format
------------	--

ES EPG/HPG 60 WM 10

Weidmüller Interface GmbH & Co. KG
Klingenbergstraße 26
D-32758 Detmold
Germany

www.weidmueller.com

Accessories

Tools



Crimping tools for cable lugs, connectors and wire-end ferrules with interchangeable inserts

- extremely fast processing thanks to hydraulic support
- large processing range up to 400 mm²
- 360° revolving quick action crimping head
- automatic pressure limitation and monitoring via pressure sensor
- Additional features for APG series:
- electronic control and monitoring of the crimping process
- Saving of all crimping cycles and error messages to internal memory
- Reading of all cycles and error messages via USB

General ordering data

Type	HPG 60	Version
Order No.	2453820000	6mm ² , 300mm ² , Hexagonal crimp, WM crimp, Indent crimp,
GTIN (EAN)	4050118468427	Trapezoidal crimp, Oval crimping
Qty.	1 pc(s).	

10 mm²



The use of insulated connectors guarantees users consistent electrical connection quality in the long term.

- Wide range of insulated and non-insulated cable lugs and connectors
- Tubular cable lugs according to current market standards (Euroseries)
- Compression cable lugs acc. to DIN 46235
- Sheet metal cable lugs acc. to DIN 46234
- Insulated ring cable lugs to DIN 46237
- Insulated pin cable lugs to DIN 46231

General ordering data

Type	VSTN/-10	Version
Order No.	1497130000	cable lug, terminal end, 10 mm ² , 10 mm ²
GTIN (EAN)	4050118306491	
Qty.	50 pc(s).	

ES EPG/HPG 60 WM 10

Weidmüller Interface GmbH & Co. KG

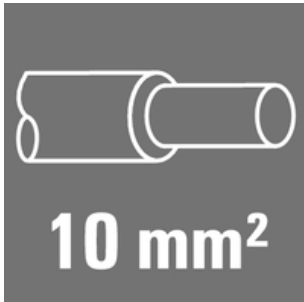
Klingenbergstraße 26

D-32758 Detmold

Germany

www.weidmueller.com

Accessories

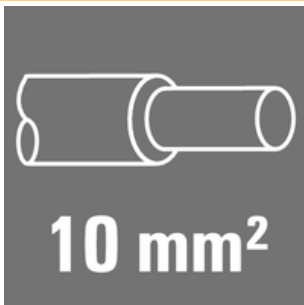
10 mm²

The use of insulated connectors guarantees users consistent electrical connection quality in the long term.

- Wide range of insulated and non-insulated cable lugs and connectors
- Tubular cable lugs according to current market standards (Euroseries)
- Compression cable lugs acc. to DIN 46235
- Sheet metal cable lugs acc. to DIN 46234
- Insulated ring cable lugs to DIN 46237
- Insulated pin cable lugs to DIN 46231

General ordering data

Type	KWPN-M6/-10 90	Version
Order No.	1497420000	cable lug, terminal end, 10 mm ²
GTIN (EAN)	4050118307023	
Qty.	100 pc(s).	
Type	KWPN-M8/-10 90	Version
Order No.	1497430000	cable lug, terminal end, 10 mm ²
GTIN (EAN)	4050118306927	
Qty.	100 pc(s).	

10 mm²

The use of insulated connectors guarantees users consistent electrical connection quality in the long term.

- Wide range of insulated and non-insulated cable lugs and connectors
- Tubular cable lugs according to current market standards (Euroseries)
- Compression cable lugs acc. to DIN 46235
- Sheet metal cable lugs acc. to DIN 46234
- Insulated ring cable lugs to DIN 46237
- Insulated pin cable lugs to DIN 46231

General ordering data

Type	KSN/-10	Version
Order No.	1492780000	cable lug, terminal end, 10 mm ² , 10 mm ²
GTIN (EAN)	4050118302806	
Qty.	100 pc(s).	

ES EPG/HPG 60 WM 10

Weidmüller Interface GmbH & Co. KG

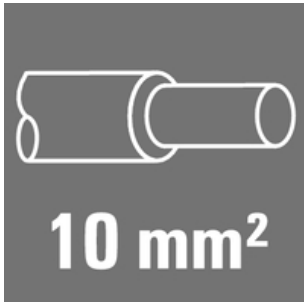
Klingenbergstraße 26

D-32758 Detmold

Germany

www.weidmueller.com

Accessories

10 mm²

The use of insulated connectors guarantees users consistent electrical connection quality in the long term.

- Wide range of insulated and non-insulated cable lugs and connectors
- Tubular cable lugs according to current market standards (Euroseries)
- Compression cable lugs acc. to DIN 46235
- Sheet metal cable lugs acc. to DIN 46234
- Insulated ring cable lugs to DIN 46237
- Insulated pin cable lugs to DIN 46231

General ordering data

Type	KRN-M6/-10	Version
Order No.	1496920000	cable lug, terminal end, 10 mm ²
GTIN (EAN)	4050118306439	
Qty.	100 pc(s).	
Type	KRN-M8/-10	Version
Order No.	1496930000	cable lug, terminal end, 10 mm ²
GTIN (EAN)	4050118306552	
Qty.	100 pc(s).	
Type	KRN-M12/-10	Version
Order No.	1496950000	cable lug, terminal end, 10 mm ²
GTIN (EAN)	4050118306453	
Qty.	100 pc(s).	
Type	KRN-M5/-10	Version
Order No.	1496910000	cable lug, terminal end, 10 mm ²
GTIN (EAN)	4050118306378	
Qty.	100 pc(s).	
Type	KRN-M10/-10	Version
Order No.	1496940000	cable lug, terminal end, 10 mm ²
GTIN (EAN)	4050118306521	
Qty.	100 pc(s).	
Type	KRN-M4/-10	Version
Order No.	1496900000	cable lug, terminal end, 10 mm ²
GTIN (EAN)	4050118306293	
Qty.	100 pc(s).	

ES EPG/HPG 60 WM 10

Weidmüller Interface GmbH & Co. KG

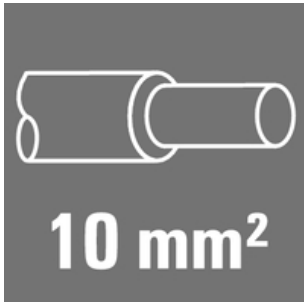
Klingenbergstraße 26

D-32758 Detmold

Germany

www.weidmueller.com

Accessories

10 mm²

The use of insulated connectors guarantees users consistent electrical connection quality in the long term.

- Wide range of insulated and non-insulated cable lugs and connectors
- Tubular cable lugs according to current market standards (Euroseries)
- Compression cable lugs acc. to DIN 46235
- Sheet metal cable lugs acc. to DIN 46234
- Insulated ring cable lugs to DIN 46237
- Insulated pin cable lugs to DIN 46231

General ordering data

Type	KWN-M5/-10 90	Version
Order No.	1497020000	cable lug, terminal end, 10 mm ²
GTIN (EAN)	4050118306712	
Qty.	100 pc(s).	
Type	KWN-M8/-10 90	Version
Order No.	1497040000	cable lug, terminal end, 10 mm ²
GTIN (EAN)	4050118306576	
Qty.	100 pc(s).	
Type	KWN-M12/-10 90	Version
Order No.	1497070000	cable lug, terminal end, 10 mm ²
GTIN (EAN)	4050118306606	
Qty.	100 pc(s).	
Type	KWN-M6/-10 90	Version
Order No.	1497030000	cable lug, terminal end, 10 mm ²
GTIN (EAN)	4050118306484	
Qty.	100 pc(s).	
Type	KWN-M10/-10 90	Version
Order No.	1497050000	cable lug, terminal end, 10 mm ²
GTIN (EAN)	4050118306750	
Qty.	100 pc(s).	

ES EPG/HPG 60 WM 10

Weidmüller Interface GmbH & Co. KG

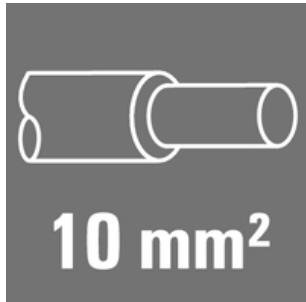
Klingenbergstraße 26

D-32758 Detmold

Germany

www.weidmueller.com

Accessories

10 mm²

The use of insulated connectors guarantees users consistent electrical connection quality in the long term.

- Wide range of insulated and non-insulated cable lugs and connectors
- Tubular cable lugs according to current market standards (Euroseries)
- Compression cable lugs acc. to DIN 46235
- Sheet metal cable lugs acc. to DIN 46234
- Insulated ring cable lugs to DIN 46237
- Insulated pin cable lugs to DIN 46231

General ordering data

Type	VPLN/-10	Version
Order No.	1492890000	cable lug, terminal end, 10 mm ² , 10 mm ²
GTIN (EAN)	4050118302561	
Qty.	100 pc(s).	

10 mm²

The use of insulated connectors guarantees users consistent electrical connection quality in the long term.

- Wide range of insulated and non-insulated cable lugs and connectors
- Tubular cable lugs according to current market standards (Euroseries)
- Compression cable lugs acc. to DIN 46235
- Sheet metal cable lugs acc. to DIN 46234
- Insulated ring cable lugs to DIN 46237
- Insulated pin cable lugs to DIN 46231

General ordering data

Type	KP-M8/-10	Version
Order No.	1497890000	cable lug, terminal end, 10 mm ²
GTIN (EAN)	4050118307573	
Qty.	100 pc(s).	
Type	KP-M5/-10	Version
Order No.	1497870000	cable lug, terminal end, 10 mm ²
GTIN (EAN)	4050118307252	
Qty.	100 pc(s).	
Type	KP-M6/-10	Version
Order No.	1497880000	cable lug, terminal end, 10 mm ²
GTIN (EAN)	4050118307283	
Qty.	100 pc(s).	
Type	KP-M10/-10	Version
Order No.	1497910000	cable lug, terminal end, 10 mm ²
GTIN (EAN)	4050118307276	
Qty.	100 pc(s).	

ES EPG/HPG 60 WM 10

Weidmüller Interface GmbH & Co. KG

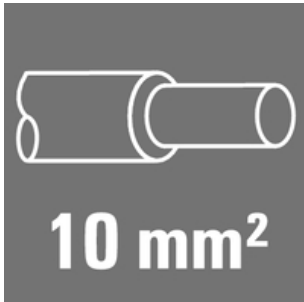
Klingenbergstraße 26

D-32758 Detmold

Germany

www.weidmueller.com

Accessories

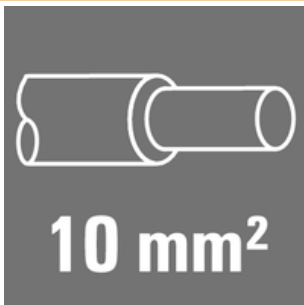
10 mm²

The use of insulated connectors guarantees users consistent electrical connection quality in the long term.

- Wide range of insulated and non-insulated cable lugs and connectors
- Tubular cable lugs according to current market standards (Euroseries)
- Compression cable lugs acc. to DIN 46235
- Sheet metal cable lugs acc. to DIN 46234
- Insulated ring cable lugs to DIN 46237
- Insulated pin cable lugs to DIN 46231

General ordering data

Type	KQNG-M6/-10	Version
Order No.	1492690000	cable lug, terminal end, 10 mm ² , 10 mm ²
GTIN (EAN)	4050118302394	
Qty.	100 pc(s).	
Type	KQNG-M5/-10	Version
Order No.	1492680000	cable lug, terminal end, 10 mm ² , 10 mm ²
GTIN (EAN)	4050118302479	
Qty.	100 pc(s).	

10 mm²

The use of insulated connectors guarantees users consistent electrical connection quality in the long term.

- Wide range of insulated and non-insulated cable lugs and connectors
- Tubular cable lugs according to current market standards (Euroseries)
- Compression cable lugs acc. to DIN 46235
- Sheet metal cable lugs acc. to DIN 46234
- Insulated ring cable lugs to DIN 46237
- Insulated pin cable lugs to DIN 46231

General ordering data

Type	KQN-M4/-10	Version
Order No.	1494010000	cable lug, terminal end, 10 mm ²
GTIN (EAN)	4050118303810	
Qty.	100 pc(s).	
Type	KQN-M10/-10	Version
Order No.	1494050000	cable lug, terminal end, 10 mm ²
GTIN (EAN)	4050118303711	
Qty.	100 pc(s).	
Type	KQN-M12/-10	Version
Order No.	1494060000	cable lug, terminal end, 10 mm ²
GTIN (EAN)	4050118304008	
Qty.	100 pc(s).	

ES EPG/HPG 60 WM 10

Weidmüller Interface GmbH & Co. KG

Klingenbergstraße 26

D-32758 Detmold

Germany

www.weidmueller.com

Accessories

Type	KQN-M6/-10	Version
Order No.	1494030000	cable lug, terminal end, 10 mm ²
GTIN (EAN)	4050118303483	
Qty.	100 pc(s).	
Type	KQN-M8/-10	Version
Order No.	1494040000	cable lug, terminal end, 10 mm ²
GTIN (EAN)	4050118303803	
Qty.	100 pc(s).	
Type	KQN-M5/-10	Version
Order No.	1494020000	cable lug, terminal end, 10 mm ²
GTIN (EAN)	4050118303681	
Qty.	100 pc(s).	

Tools



Crimping tools for cable lugs, connectors and wire-end ferrules with interchangeable inserts

- extremely fast processing thanks to hydraulic support
- large processing range up to 300 mm²
- 270° revolving quick-action crimping head
- automatic pressure limitation and monitoring via pressure sensor
- electronic control and monitoring of the crimping process
- Saving of all crimping cycles and error messages to internal memory
- Reading of all cycles and error messages via USB
- Li-ion rechargeable battery with charge status indicator: 18 V, 2 Ah

General ordering data

Type	EPG 60	Version
Order No.	2453810000	Pressing tools, Tools, Pressing tool, 6mm ² , 300mm ² , Hexagonal crimp,
GTIN (EAN)	4050118468434	WM crimp, Indent crimp, Trapezoidal crimp, Oval crimping
Qty.	1 pc(s).	

ES EPG/HPG 60 WM 10

Weidmüller Interface GmbH & Co. KG

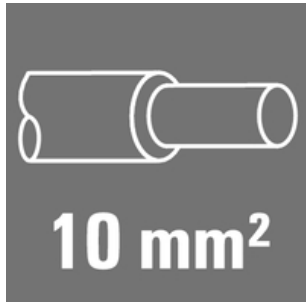
Klingenbergstraße 26

D-32758 Detmold

Germany

www.weidmueller.com

Accessories

10 mm²

The use of insulated connectors guarantees users consistent electrical connection quality in the long term.

- Wide range of insulated and non-insulated cable lugs and connectors
- Tubular cable lugs according to current market standards (Euroseries)
- Compression cable lugs acc. to DIN 46235
- Sheet metal cable lugs acc. to DIN 46234
- Insulated ring cable lugs to DIN 46237
- Insulated pin cable lugs to DIN 46231

General ordering data

Type	VSTN/10	Version
Order No.	1493030000	cable lug, terminal end, 10 mm ² , 10 mm ²
GTIN (EAN)	4050118302776	
Qty.	100 pc(s).	

10 mm²

The use of insulated connectors guarantees users consistent electrical connection quality in the long term.

- Wide range of insulated and non-insulated cable lugs and connectors
- Tubular cable lugs according to current market standards (Euroseries)
- Compression cable lugs acc. to DIN 46235
- Sheet metal cable lugs acc. to DIN 46234
- Insulated ring cable lugs to DIN 46237
- Insulated pin cable lugs to DIN 46231

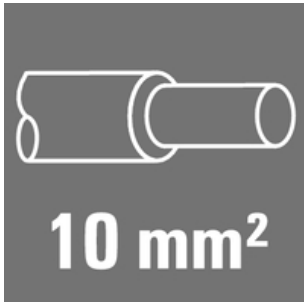
General ordering data

Type	KWN-M6/-10 45	Version
Order No.	1496820000	cable lug, terminal end, 10 mm ²
GTIN (EAN)	4050118306286	
Qty.	100 pc(s).	
Type	KWN-M5/-10 45	Version
Order No.	1496810000	cable lug, terminal end, 10 mm ²
GTIN (EAN)	4050118306309	
Qty.	100 pc(s).	
Type	KWN-M8/-10 45	Version
Order No.	1496830000	cable lug, terminal end, 10 mm ²
GTIN (EAN)	4050118306330	
Qty.	100 pc(s).	
Type	KWN-M10/-10 45	Version
Order No.	1496840000	cable lug, terminal end, 10 mm ²
GTIN (EAN)	4050118306361	
Qty.	100 pc(s).	

ES EPG/HPG 60 WM 10

Weidmüller Interface GmbH & Co. KG
Klingenbergstraße 26
D-32758 Detmold
Germany

www.weidmueller.com

Accessories**10 mm²**

The use of insulated connectors guarantees users consistent electrical connection quality in the long term.

- Wide range of insulated and non-insulated cable lugs and connectors
- Tubular cable lugs according to current market standards (Euroseries)
- Compression cable lugs acc. to DIN 46235
- Sheet metal cable lugs acc. to DIN 46234
- Insulated ring cable lugs to DIN 46237
- Insulated pin cable lugs to DIN 46231

General ordering data

Type	VPN/-10	Version
Order No.	1498620000	cable lug, terminal end, 10 mm ² , 10 mm ²
GTIN (EAN)	4050118308136	
Qty.	100 pc(s).	