

**PRO TOP2 120W 24V 5A UW****Weidmüller Interface GmbH & Co. KG**

Klingenbergstraße 26

D-32758 Detmold

Germany

[www.weidmueller.com](http://www.weidmueller.com)

Production processes constantly need to be made more efficient. As well as performance, energy efficiency and sustainability are also playing an increasingly important role in cutting-edge industry. PROtop power supplies combine excellent performance data with exemplary sustainability, which has a positive impact on the productivity of the entire production facility.

PROtop offers a number of advantages that give you a real competitive edge. These include the permanent reduction of energy costs thanks to high efficiencies as well as the increase in plant availability due to long service life and high MTBF values. In addition, there is a high functional density due to the extremely spacesaving designs. PROtop can achieve significant savings compared to conventional power supply units. Its increased efficiency saves an average of 50 kWh per day in a medium-sized production facility with approx. 100 PROtop power supplies working in three-shift operation. This adds up to over 15,000 kWh a year and also improves the facility's carbon footprint. The service life, which is twice as long as that of standard power supplies, also sustainably reduces the costs of repurchase and exchange.

**General ordering data**

Version	Power supply, switch-mode power supply unit, 24 V
Order No.	<a href="#">2467230000</a>
Type	PRO TOP2 120W 24V 5A UW
GTIN (EAN)	4050118482133
Qty.	1 pc(s).

## PRO TOP2 120W 24V 5A UW

Weidmüller Interface GmbH &amp; Co. KG

Klingenbergstraße 26

D-32758 Detmold

Germany

www.weidmueller.com

## Technical data

## Dimensions and weights

Depth	125 mm	Depth (inches)	4.921 inch
Height	130 mm	Height (inches)	5.118 inch
Width	39 mm	Width (inches)	1.535 inch
Net weight	920 g		

## Temperatures

Storage temperature	-40 °C...85 °C	Operating temperature	-25 °C...75 °C
Humidity at operating temperature	5...95 %, no condensation		

## Input

AC input voltage range	85...550 V AC	
Connection system	PUSH IN	
Current consumption in relation to the input voltage	Voltage type	AC
	Input voltage	85 V
	Input current	2 A
DC input voltage range	90...800 V DC	
Frequency range AC	45...65 Hz	
Input fuse (internal)	Yes	
Inrush current	max. 5 A	
Nominal power consumption	134.8 VA	
Power factor	Power factor typical	0.4
	Input voltage	400 V
	Ambient temperature	25 °C
	Output power	120 W
Rated input voltage	100 - 500 V AC / 120 - 500 V DC	
Recommended back-up fuse	5 A, DI / 6 A, Char. B / 6 A, Char C	
Surge protection	Varistor	

## Output

Connection system	PUSH IN with actuator	
DCL - peak load reserve	Boost duration	15 ms
	Multiple of the rated current	600 %
Mains failure bridge-over time	Mains failure bridge-over time, min.	20 ms
	Input voltage type	AC
	Input voltage	110 V
	Output current	5 A
	Output voltage	24 V
Nominal output current for U <sub>nom</sub>	5 A @ 60 °C	
Output power	120 W	
Output voltage, max.	28.8 V	
Output voltage, min.	22.5 V	
Output voltage, note	adjustable with potentiometer or communication module	
Parallel connection option	yes, max 10	
Protection against inverse voltage	Yes	
Ramp-up time	≤ 100 ms	
Rated output voltage	24 V DC ± 1 %	
Residual ripple, breaking spikes	< 50 mVss @ U <sub>Nenn</sub> , Full Load	

# PRO TOP2 120W 24V 5A UW

**Weidmüller Interface GmbH & Co. KG**

Klingenbergstraße 26

D-32758 Detmold

Germany

[www.weidmueller.com](http://www.weidmueller.com)

## Technical data

### General data

Conformal coating	No	Degree of efficiency	89%
Derating	> 60°C (2.5% / 1°C)	Earth leakage current, max.	3.5 mA
Housing version	Metal, corrosion resistant	Power loss, idling	5 W
Power loss, nominal load	14.8 W	Protection degree	IP20
Start-up	≥ -40 °C	Surge voltage category	II, III

### EMC / shock / vibration

Interference immunity test acc. to	EN 55032:2015, EN 61000-3-2:2019, EN 61000-6-3:2007/A1:2011, EN 61000-6-4:2007/A1:2011, EN 61000-3-3:2013+A1:2019, EN 55035:2017, EN 61000-6-1:2019, EN 61000-6-2:2019, IEC 61000-4-2:2008, IEC 61000-4-3:2006+A1:2007+A2:2010, IEC 61000-4-4:2012, IEC 61000-4-5:2014, IEC 61000-4-6:2013, IEC 61000-4-8:2009, IEC 61000-4-11:2004	Noise emission in accordance with EN55032	
Shock resistance IEC 60068-2-27	30 g in all directions	Vibration resistance IEC 60068-2-6	Class B 2.3 g (on DIN rail), 4 g (with direct mounting)

### Insulation coordination

Insulation voltage input / earth	3.2 kV	Insulation voltage output / earth	0.5 kV
Insulation voltage, input/output	3.5 kV	Pollution severity	2
Protection class	I, with PE connection	Surge voltage category	II, III

### Electrical safety (applied standards)

Electrical machine equipment	Acc. to EN60335-1	For use with electronic equipment	Acc. to EN50178
Protection against dangerous shock currents	Acc. to VDE0106-101	Protective separation / protection against electrical shock	VDE0100-410 / acc. to DIN57100-410
Safety extra-low voltage	SELV acc. to IEC 60950-1, PELV according to EN 60204-1	Safety transformers for switch-mode power supplies	According to EN 61558-2-17

### Connection data (input)

Conductor cross-section, AWG/kcmil, max.	12	Conductor cross-section, AWG/kcmil, min.	26
Conductor cross-section, flexible, min.	0.5 mm²	Conductor cross-section, rigid, max.	2.5 mm²
Conductor cross-section, rigid, min.	0.5 mm²	Connection system	PUSH IN
Number of terminals	3 for L/N/PE	Wire connection cross section, flexible (input), max.	2.5 mm²

## PRO TOP2 120W 24V 5A UW

**Weidmüller Interface GmbH & Co. KG**  
 Klingenbergstraße 26  
 D-32758 Detmold  
 Germany

www.weidmueller.com

## Technical data

## Connection data (output)

Conductor cross-section, AWG/kcmil , max.	12	Conductor cross-section, AWG/kcmil , min.	20
Conductor cross-section, flexible , max.	2.5 mm <sup>2</sup>	Conductor cross-section, flexible , min.	0.2 mm <sup>2</sup>
Conductor cross-section, rigid , max.	2.5 mm <sup>2</sup>	Conductor cross-section, rigid , min.	0.2 mm <sup>2</sup>
Connection system	PUSH IN with actuator	Number of terminals	4 (++ / -)

## Connection data (signal)

Wire connection cross-section, flexible (signal), max.	1.5 mm <sup>2</sup>	Wire connection cross-section, flexible (signal), min.	0.2 mm <sup>2</sup>
Wire connection method	Screw connection	Wire cross-section, AWG/kcmil , max.	16
Wire cross-section, AWG/kcmil , min.	28	Wire cross-section, solid , max.	1.5 mm <sup>2</sup>
Wire cross-section, solid , min.	0.2 mm <sup>2</sup>		

## Signalling

Floating contact	LED green/red	Green: Operation (failure-free), Flashing green: advance warning I>90%, Green/red flashing: output switched off (switch-off mode), Flashing red: overload/error
Status relay (max. load)	Yes Output voltage OK (30 V DC / 1 A)	

## Approbations

Certificate No. (CSA)	80043367	Institute (CSA)	CSA
-----------------------	----------	-----------------	-----

## Classifications

ETIM 6.0	EC002540	ETIM 7.0	EC002540
ETIM 8.0	EC002540	ETIM 9.0	EC002540
ECLASS 9.0	27-04-07-01	ECLASS 9.1	27-04-07-01
ECLASS 10.0	27-04-07-01	ECLASS 11.0	27-04-07-01
ECLASS 12.0	27-04-07-01	ECLASS 13.0	27-04-07-01

## Environmental Product Compliance

REACH SVHC	Lead 7439-92-1
SCIP	6d8cdf22-8230-4af8-86c8-3558c716666d

## Approvals

Approvals



CSAEX



Type  
Approved



ROHS

Conform

## PRO TOP2 120W 24V 5A UW

**Weidmüller Interface GmbH & Co. KG**  
Klingenbergstraße 26  
D-32758 Detmold  
Germany

[www.weidmueller.com](http://www.weidmueller.com)

## Technical data

### Downloads

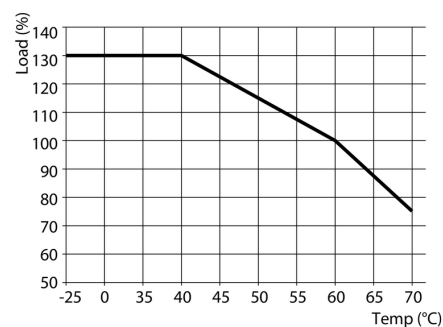
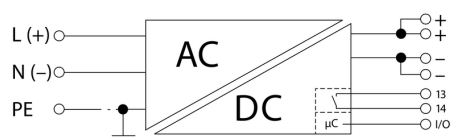
Approval/Certificate/Document of Conformity	<a href="#">DNV Certificate.pdf</a> <a href="#">CSA 61010-1 Certificate.pdf</a> <a href="#">C1D2 Certificate.pdf</a> <a href="#">DoP EN54.4</a> <a href="#">Declaration of Conformity</a> <a href="#">UK Conformity Assessed</a>
Engineering Data	<a href="#">CAD data – STEP</a>
User Documentation	<a href="#">Instruction sheets</a>
Catalogues	<a href="#">Catalogues in PDF-format</a>
Brochures	<a href="#">Produkt Information PROTOP DE</a> <a href="#">Produkt Information PROTOP EN</a>

## PRO TOP2 120W 24V 5A UW

**Weidmüller Interface GmbH & Co. KG**  
Klingenbergstraße 26  
D-32758 Detmold  
Germany

[www.weidmueller.com](http://www.weidmueller.com)

## Drawings



## PRO TOP2 120W 24V 5A UW

Weidmüller Interface GmbH &amp; Co. KG

Klingenbergstraße 26

D-32758 Detmold

Germany

[www.weidmueller.com](http://www.weidmueller.com)

## Accessories

## W-Series

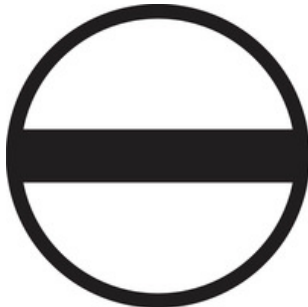
The logo for the W-Series, featuring a large orange 'W' above the word 'Series' in a grey sans-serif font.

Weidmüller's range of products includes end brackets that guarantee a permanent, reliable mounting on the terminal rail and prevent sliding. Versions with and without screws are available. The end brackets include marking options, also for group markers, and also a test plug holder.

## General ordering data

Type	WEW 35/1 V0 GF SW	Version
Order No.	<a href="#">1478990000</a>	End bracket, Wemid, black, Rail: TS 35, when screwed in
GTIN (EAN)	4050118286892	
Qty.	50 pc(s).	
Type	WEW 35/2 V0 GF SW	Version
Order No.	<a href="#">1479000000</a>	End bracket, Wemid, black, Rail: TS 35, when screwed in
GTIN (EAN)	4050118286779	
Qty.	50 pc(s).	

## Slotted screwdriver



VDE insulated screwdriver sets, for working on live parts up to 1000 V AC and 1500 V DC, DIN EN 60900. IEC 900. Each piece is "GS" safety tested. Blade made from fully hardened, high-alloy chromium-vanadium-molybdenum steel, gun-metal finish.

## General ordering data

Type	SDIS SLIM 0.6X3.5X100	Version
Order No.	<a href="#">2749610000</a>	Mounting tool, Blade width (B): 3.5 mm, Blade length: 100 mm, Blade
GTIN (EAN)	4050118896350	thickness (A): 0.6 mm
Qty.	1 pc(s).	

## PRO TOP2 120W 24V 5A UW

**Weidmüller Interface GmbH & Co. KG**

Klingenbergstraße 26

D-32758 Detmold

Germany

[www.weidmueller.com](http://www.weidmueller.com)

## Accessories

### BLF 5.00HC/180F SN



Just as reliable as the millionfold proven original and featuring innovative details:

The BLF 5.00HC PUSH IN version of the BLZ 5.00HC female connector features a new connection system and a more compact design. Weidmüller's innovative PUSH IN spring connection system stands for the future of easy and tool-free wire connection. HC = High Current.

In terms of versatility, the BLF 5.00HC offers just as much as the older versions:

- 3 tested-and-proven wire outlet directions provide the usual flexibility for application-specific design
- 4 flange variations and the patented release latch allow the locking concept to be based on the requirements of the user

#### General ordering data

Type	BLF 5.00HC/04/180F SN B ...	Version	Product data	Packaging
Order No.	<a href="#">2568270000</a>	PCB plug-in connector, female plug, 5.00 mm, Number of poles: 4,	IEC: 400 V / 23 A / 0.2 - 2.5 mm <sup>2</sup>	Box
GTIN (EAN)	4050118578805	180°, PUSH IN with actuator, Clamping range, max. : 3.31 mm <sup>2</sup> , Box	UL: 300 V / 18.5 A / AWG 26 - AWG	
Qty.	72 pc(s).		12	

### Communication modules



Weidmüller's plug-in communication modules enable individual components to exchange relevant data with the cloud. This lays the foundation for targeted process optimization using condition monitoring and remote controllability - factors that play a decisive role in increasing efficiency, quality, process stability and availability can contribute. The communication modules are designed according to IP20 protected, can be operated without tools and can be flexibly adapted to different customisable communication protocols.

#### General ordering data

Type	PRO COM CAN OPEN	Version
Order No.	<a href="#">2467320000</a>	Communication module
GTIN (EAN)	4050118482225	
Qty.	1 pc(s).	
Type	PRO COM CAN OPEN EX	Version
Order No.	<a href="#">2467340000</a>	Communication module
GTIN (EAN)	4050118481822	
Qty.	1 pc(s).	
Type	PRO COM IO-LINK	Version
Order No.	<a href="#">2587360000</a>	Communication module
GTIN (EAN)	4050118599152	
Qty.	1 pc(s).	
Type	PRO COM DISPLAY 7S	Version
Order No.	<a href="#">2466960000</a>	Communication module
GTIN (EAN)	4050118481808	
Qty.	1 pc(s).	

## PRO TOP2 120W 24V 5A UW

**Weidmüller Interface GmbH & Co. KG**

Klingenbergstraße 26

D-32758 Detmold

Germany

www.weidmueller.com

## Accessories

### Installation



Mounting accessory for Weidmüller Power Supplies.

### General ordering data

Type CP A WALLADAPTER 30 MM

Order No. [1461870000](#)

GTIN (EAN) 4050118268225

Qty. 1 pc(s).

Type PRO TOP BRACKETS

Version

Order No. [2575900000](#)

Mounting foot

GTIN (EAN) 4050118683059

Qty. 1 pc(s).

Type MTA 30 MF

Version

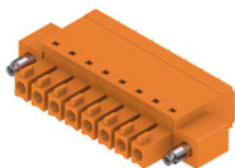
Order No. [1251320000](#)

Electronics housings, Mounting flange

GTIN (EAN) 4050118042702

Qty. 20 pc(s).

### BCF 3.81/180F



PUSH IN - Weidmüller's innovative connection system simplifies the wire connection process.

The benefits for users and applications:

- High packaging density due to very low component height. Simply insert the prepared wire - finished
- High component density with the compact SCDN / SCDN-THR two-tier pin header
- Simplified processing due to integrated push buttons for opening the clamping unit
- Intuitive handling – since the wire-entry area and handling area are clearly separated
- tool-free locking and releasing when using Weidmüller's patented release latch (LR)

The Weidmüller plug-in connectors, pitch 3.81 mm (0.15 inch), are compatible with the layout of customary plug-in connectors, can be coded and provide space for printing.

### General ordering data

Type	BCF 3.81/03/180F SN BK ...	Version	Product data	Packaging
Order No.	<a href="#">1971570000</a>	PCB plug-in connector, female plug, 3.81 mm, Number of poles: 3,	IEC: 320 V / 17.5 A / 0.14 - 1.5 mm <sup>2</sup>	Box
GTIN (EAN)	4032248680504	180°, PUSH IN with actuator, Clamping range, max. : 1.5 mm <sup>2</sup> , Box	UL: 300 V / 10 A / AWG 26 - AWG 16	
Qty.	50 pc(s).			

**PRO TOP2 120W 24V 5A UW****Weidmüller Interface GmbH & Co. KG**

Klingenbergstraße 26

D-32758 Detmold

Germany

[www.weidmueller.com](http://www.weidmueller.com)**Accessories****BLF 7.62HP/180F**

180° female header with PUSH-IN connection technology for field wiring in 2.5 mm<sup>2</sup> with a 7.62 pitch.

Meets the requirements as per UL1059 600 V class C and IEC 61800-5-1

Variants: without flange, external flange, release latch.

**General ordering data**

Type	BLF 7.62HP/03/180F SN B ...	Version	Product data	Packaging
Order No.	<a href="#">1043920000</a>	PCB plug-in connector, female plug, 7.62 mm, Number of poles: 3,	IEC: 1000 V / 29 A / 0.5 - 2.5 mm <sup>2</sup>	Box
GTIN (EAN)	4032248775460	180°, PUSH IN with actuator, Clamping range, max. : 2.5 mm <sup>2</sup> , Box	UL: 600 V / 20 A / AWG 20 - AWG 12	
Qty.	54 pc(s).			