

PRO TOP1 120W 24V 5A**Weidmüller Interface GmbH & Co. KG**

Klingenbergstraße 26

D-32758 Detmold

Germany

www.weidmueller.com

Production processes constantly need to be made more efficient. As well as performance, energy efficiency and sustainability are also playing an increasingly important role in cutting-edge industry. PROtop power supplies combine excellent performance data with exemplary sustainability, which has a positive impact on the productivity of the entire production facility.

PROtop offers a number of advantages that give you a real competitive edge. These include the permanent reduction of energy costs thanks to high efficiencies as well as the increase in plant availability due to long service life and high MTBF values. In addition, there is a high functional density due to the extremely spacesaving designs. PROtop can achieve significant savings compared to conventional power supply units. Its increased efficiency saves an average of 50 kWh per day in a medium-sized production facility with approx. 100 PROtop power supplies working in three-shift operation. This adds up to over 15,000 kWh a year and also improves the facility's carbon footprint. The service life, which is twice as long as that of standard power supplies, also sustainably reduces the costs of repurchase and exchange.

General ordering data

| | |
|------------|---|
| Version | Power supply, switch-mode power supply unit, 24 V |
| Order No. | 2466870000 |
| Type | PRO TOP1 120W 24V 5A |
| GTIN (EAN) | 4050118481457 |
| Qty. | 1 pc(s). |

PRO TOP1 120W 24V 5A**Weidmüller Interface GmbH & Co. KG**

Klingenbergstraße 26

D-32758 Detmold

Germany

www.weidmueller.com

Technical data**Dimensions and weights**

| | | | |
|------------|--------|-----------------|------------|
| Depth | 125 mm | Depth (inches) | 4.921 inch |
| Height | 130 mm | Height (inches) | 5.118 inch |
| Width | 35 mm | Width (inches) | 1.378 inch |
| Net weight | 850 g | | |

Temperatures

| | | | |
|-----------------------------------|---------------------------|-----------------------|----------------|
| Storage temperature | -40 °C...85 °C | Operating temperature | -25 °C...70 °C |
| Humidity at operating temperature | 5...95 %, no condensation | | |

Input

| | | |
|--|--|-------|
| AC input voltage range | 85...277 V AC | |
| Connection system | PUSH IN with actuator | |
| Current consumption in relation to the input voltage | Voltage type | AC |
| | Input voltage | 100 V |
| | Input current | 2 A |
| | Voltage type | DC |
| | Input voltage | 120 V |
| | Input current | 2 A |
| DC input voltage range | 48...410 V DC (Derating 40% @ 48 V DC) | |
| Frequency range AC | 45...65 Hz | |
| Input fuse (internal) | Yes | |
| Inrush current | max. 5 A | |
| Nominal power consumption | 131.9 VA | |
| Rated input voltage | 110...240 V AC / 120...340 V DC | |
| Recommended back-up fuse | 5 A, DI / 6 A, Char. B / 6 A, Char C | |
| Surge protection | Varistor | |

Output

| | | |
|---|--|-------|
| Connection system | PUSH IN with actuator | |
| DCL - peak load reserve | Multiple of the rated current | 150 % |
| | Boost duration | 5 s |
| | Multiple of the rated current | 600 % |
| | Boost duration | 15 ms |
| Mains failure bridge-over time | > 20 ms @ 115V AC/ 230 VAC | |
| Nominal output current for U _{nom} | 5 A @ 60 °C | |
| Output power | 120 W | |
| Output voltage, max. | 28.8 V | |
| Output voltage, min. | 22.5 V | |
| Output voltage, note | adjustable with potentiometer or comunication module | |
| Parallel connection option | yes, max 10 | |
| Protection against inverse voltage | Yes | |
| Ramp-up time | ≤ 100 ms | |
| Rated output voltage | 24 V DC ± 1 % | |
| Residual ripple, breaking spikes | <50 mVss @ U _{Nenn} , Full Load | |

PRO TOP1 120W 24V 5A

Weidmüller Interface GmbH & Co. KG

Klingenbergstraße 26

D-32758 Detmold

Germany

www.weidmueller.com

Technical data

General data

| | | | |
|---|---|--------------------|----------------------------|
| AC failure bridging time @ I _{nom} | > 20 ms @ 230 V AC / > 20 ms @ 115 V AC | Conformal coating | No |
| Degree of efficiency | 91% | Derating | > 60°C (2.5% / 1°C) |
| Earth leakage current, max. | 3.5 mA | Housing version | Metal, corrosion resistant |
| Power factor (approx.) | > 0.85 | Power loss, idling | 5 W |
| Power loss, nominal load | 11.8 W | Protection degree | IP20 |
| Short-circuit protection | Yes, internal | Start-up | ≥ -40 °C |
| Surge voltage category | III, II | | |

EMC / shock / vibration

| | | | |
|------------------------------------|--|---|--|
| Interference immunity test acc. to | EN 55032:2015, EN 55024:2010/A1:2015, EN 55035:2017, EN 61000-3-2:2014, EN 61000-6-1:2007, EN 61000-6-2:2005, EN 61000-6-3:2007/A1:2011, EN 61000-6-4:2007/A1:2011 | Noise emission in accordance with EN55032 | |
| Shock resistance IEC 60068-2-27 | 30 g in all directions | Vibration resistance IEC 60068-2-6 | Class B 2.3 g (on DIN rail), 4 g (with direct mounting) |

Insulation coordination

| | | | |
|----------------------------------|-----------------------|-----------------------------------|---------|
| Insulation voltage input / earth | 3.2 kV | Insulation voltage output / earth | 0.5 kV |
| Insulation voltage, input/output | 3.5 kV | Pollution severity | 2 |
| Protection class | I, with PE connection | Surge voltage category | III, II |

Electrical safety (applied standards)

| | | | |
|---|--|---|------------------------------------|
| Electrical machine equipment | Acc. to EN60204 | For use with electronic equipment | Acc. to EN50178 / VDE0160 |
| Protection against dangerous shock currents | Acc. to VDE0106-101 | Protective separation / protection against electrical shock | VDE0100-410 / acc. to DIN57100-410 |
| Safety extra-low voltage | SELV acc. to IEC 60950-1, PELV according to EN 60204-1 | Safety transformers for switch-mode power supplies | According to EN 61558-2-16 |

Connection data (input)

| | | | |
|---|---------------------|--|-----------------------|
| Conductor cross-section, AWG/kcmil, max. | 12 AWG | Conductor cross-section, AWG/kcmil, min. | 20 AWG |
| Conductor cross-section, flexible, min. | 0.5 mm ² | Conductor cross-section, rigid, max. | 1.5 mm ² |
| Conductor cross-section, rigid, min. | 0.5 mm ² | Connection system | PUSH IN with actuator |
| Number of terminals | 3 for L/N/PE | Screwdriver blade | 0.6 x 3.5 |
| Wire connection cross section, flexible (input), max. | 2.5 mm ² | | |

PRO TOP1 120W 24V 5A**Weidmüller Interface GmbH & Co. KG**

Klingenbergstraße 26

D-32758 Detmold

Germany

www.weidmueller.com

Technical data**Connection data (output)**

| | | | |
|---|-----------------------|---|---------------------|
| Conductor cross-section, AWG/kcmil , max. | 12 AWG | Conductor cross-section, AWG/kcmil , min. | 26 AWG |
| Conductor cross-section, flexible , max. | 2.5 mm ² | Conductor cross-section, flexible , min. | 0.2 mm ² |
| Conductor cross-section, rigid , max. | 2.5 mm ² | Conductor cross-section, rigid , min. | 0.2 mm ² |
| Connection system | PUSH IN with actuator | Number of terminals | 5 (+ + / - -) |
| Screwdriver blade | 0.6 x 3.5 | | |

Connection data (signal)

| | | | |
|--|----------------------|--|----------------------|
| Wire connection cross-section, flexible (signal), max. | 1.5 mm ² | Wire connection cross-section, flexible (signal), min. | 0.14 mm ² |
| Wire connection method | PUSH IN | Wire cross-section, AWG/kcmil , max. | 16 |
| Wire cross-section, AWG/kcmil , min. | 26 mm ² | Wire cross-section, solid , max. | 1.5 mm ² |
| Wire cross-section, solid , min. | 0.14 mm ² | | |

Signalling

| | | |
|--------------------------|--|---|
| Floating contact | LED green/red | Green: Operation (failure-free), Flashing green: advance warning I>90%, Green/red flashing: output switched off (switch-off mode), Flashing red: overload/error |
| Status relay (max. load) | Yes Output voltage OK (30 V DC / 1 A) | |

Approbations

| | | | |
|-------------------------|---------|---------------------------|---------|
| Certificate no. (cULus) | E255651 | Certificate no. (cULusEX) | E470829 |
| Institute (cULus) | CULUS | Institute (cULusEX) | CULUSEX |

Classifications

| | | | |
|-------------|-------------|-------------|-------------|
| ETIM 6.0 | EC002540 | ETIM 7.0 | EC002540 |
| ETIM 8.0 | EC002540 | ETIM 9.0 | EC002540 |
| ECLASS 9.0 | 27-04-07-01 | ECLASS 9.1 | 27-04-07-01 |
| ECLASS 10.0 | 27-04-07-01 | ECLASS 11.0 | 27-04-07-01 |
| ECLASS 12.0 | 27-04-07-01 | ECLASS 13.0 | 27-04-07-01 |

Environmental Product Compliance

| | |
|------------|--------------------------------------|
| REACH SVHC | Lead 7439-92-1 |
| SCIP | 6d8cdf22-8230-4af8-86c8-3558c716666d |

PRO TOP1 120W 24V 5A**Weidmüller Interface GmbH & Co. KG**

Klingenbergstraße 26

D-32758 Detmold

Germany

www.weidmueller.com

Technical data**Approvals**

Approvals



| | |
|---------------------------|------------|
| ROHS | Conform |
| UL File Number Search | UL Website |
| Certificate no. (cULus) | E255651 |
| Certificate no. (cULusEX) | E470829 |

Downloads

| | |
|---|--|
| Approval/Certificate/Document of Conformity | Lloyds Register Certificate ABS Certificate BV Certificate.pdf DNV Certificate.pdf RINA Certificate.pdf UL 508_CSA C22.2 Certificate.pdf UL 62368-1 Certificate.pdf Declaration of Conformity UK Conformity Assessed |
| Engineering Data | CAD data – STEP |
| User Documentation | Operating instruction IO-Link Register Description PROtop |
| Catalogues | Catalogues in PDF-format |
| Brochures | Produkt Information PROTOP DE Produkt Information PROTOP EN |

PRO TOP1 120W 24V 5A

Weidmüller Interface GmbH & Co. KG

Klingenbergstraße 26

D-32758 Detmold

Germany

www.weidmueller.com

Drawings



PRO TOP1 120W 24V 5A

Weidmüller Interface GmbH & Co. KG

Klingenbergstraße 26

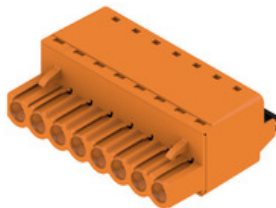
D-32758 Detmold

Germany

www.weidmueller.com

Accessories

BLF 5.00HC/180 SN



Just as reliable as the millionfold proven original and featuring innovative details:

The BLF 5.00HC PUSH IN version of the BLZ 5.00HC female connector features a new connection system and a more compact design. Weidmüller's innovative PUSH IN spring connection system stands for the future of easy and tool-free wire connection. HC = High Current. In terms of versatility, the BLF 5.00HC offers just as much as the older versions:

- 3 tested-and-proven wire outlet directions provide the usual flexibility for application-specific design
- 4 flange variations and the patented release latch allow the locking concept to be based on the requirements of the user

General ordering data

| Type | BLF 5.00HC/05/180 SN BK ... | Version | Product data | Packaging |
|------------|-----------------------------|--|---|-----------|
| Order No. | 1017710000 | PCB plug-in connector, female plug, 5.00 mm, Number of poles: 5, | IEC: 400 V / 23 A / 0.2 - 2.5 mm ² | Box |
| GTIN (EAN) | 4032248728817 | 180°, PUSH IN with actuator, Clamping range, max. : 3.31 mm ² , Box | UL: 300 V / 18.5 A / AWG 26 - AWG | |
| Qty. | 72 pc(s). | | 12 | |

W-Series



Weidmüller's range of products includes end brackets that guarantee a permanent, reliable mounting on the terminal rail and prevent sliding. Versions with and without screws are available. The end brackets include marking options, also for group markers, and also a test plug holder.

General ordering data

| Type | WEW 35/1 V0 GF SW | Version |
|------------|----------------------------|---|
| Order No. | 1478990000 | End bracket, Wemid, black, Rail: TS 35, when screwed in |
| GTIN (EAN) | 4050118286892 | |
| Qty. | 50 pc(s). | |
| Type | WEW 35/2 V0 GF SW | Version |
| Order No. | 1479000000 | End bracket, Wemid, black, Rail: TS 35, when screwed in |
| GTIN (EAN) | 4050118286779 | |
| Qty. | 50 pc(s). | |

PRO TOP1 120W 24V 5A

Weidmüller Interface GmbH & Co. KG

Klingenbergstraße 26

D-32758 Detmold

Germany

www.weidmueller.com

Accessories

Installation



Mounting accessory for Weidmüller Power Supplies.

General ordering data

| | | |
|------------|----------------------------|---------------------------------------|
| Type | MTA 30 MF | Version |
| Order No. | 1251320000 | Electronics housings, Mounting flange |
| GTIN (EAN) | 4050118042702 | |
| Qty. | 20 pc(s). | |
| Type | CP A WALLADAPTER 30 MM | |
| Order No. | 1461870000 | |
| GTIN (EAN) | 4050118268225 | |
| Qty. | 1 pc(s). | |
| Type | PRO TOP BRACKETS | Version |
| Order No. | 2575900000 | Mounting foot |
| GTIN (EAN) | 4050118683059 | |
| Qty. | 1 pc(s). | |

Communication modules



Weidmüller's plug-in communication modules enable individual components to exchange relevant data with the cloud. This lays the foundation for targeted process optimization using condition monitoring and remote controllability - factors that play a decisive role in increasing efficiency, quality, process stability and availability can contribute. The communication modules are designed according to IP20 protected, can be operated without tools and can be flexibly adapted to different customisable communication protocols.

General ordering data

| | | |
|------------|----------------------------|----------------------|
| Type | PRO COM CAN OPEN | Version |
| Order No. | 2467320000 | Communication module |
| GTIN (EAN) | 4050118482225 | |
| Qty. | 1 pc(s). | |
| Type | PRO COM DISPLAY 7S | Version |
| Order No. | 2466960000 | Communication module |
| GTIN (EAN) | 4050118481808 | |
| Qty. | 1 pc(s). | |
| Type | PRO COM IO-LINK | Version |
| Order No. | 2587360000 | Communication module |
| GTIN (EAN) | 4050118599152 | |
| Qty. | 1 pc(s). | |

Creation date June 5, 2024 8:52:38 AM CEST

Catalogue status 01.06.2024 / We reserve the right to make technical changes.

PRO TOP1 120W 24V 5A

Weidmüller Interface GmbH & Co. KG

Klingenbergstraße 26

D-32758 Detmold

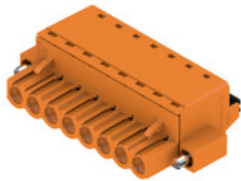
Germany

www.weidmueller.com

Accessories

| | | |
|------------|----------------------------|----------------------|
| Type | PRO COM CAN OPEN EX | Version |
| Order No. | 2467340000 | Communication module |
| GTIN (EAN) | 4050118481822 | |
| Qty. | 1 pc(s). | |

BLF 5.08HC/180F SN



Just as reliable as the millionfold proven original and featuring innovative details:

The BLF 5.08HC PUSH IN version of the BLZP 5.08HC female connector is not only different in terms of connection system; it also has a more compact design. Weidmüller's innovative PUSH IN spring connection system stands for the future of easy and tool-free wire connection. HC = High Current.

In terms of versatility, the BLF 5.08HC offers just as much as the version which served as a model:

- 3 tested-and-proven wire outlet directions provide the usual flexibility for application-specific design
- 4 flange variations and the patented release latch allow the locking concept to be based on the requirements of the user
- Use the BLF 5.08HC and SL 5.08HC plug combination to reach the max. rated specifications

General ordering data

| Type | BLF 5.08HC/03/180F SN B ... | Version | Product data | Packaging |
|------------|-----------------------------|--|---|-----------|
| Order No. | 1012650000 | PCB plug-in connector, female plug, 5.08 mm, Number of poles: 3, | IEC: 400 V / 24 A / 0.2 - 2.5 mm ² | Box |
| GTIN (EAN) | 4032248720309 | 180°, PUSH IN with actuator, Clamping range, max. : 3.31 mm ² , Box | UL: 300 V / 18.5 A / AWG 26 - AWG | |
| Qty. | 72 pc(s). | | 12 | |

Slotted screwdriver



VDE insulated screwdriver sets, for working on live parts up to 1000 V AC and 1500 V DC, DIN EN 60900. IEC 900. Each piece is "GS" safety tested. Blade made from fully hardened, high-alloy chromium-vanadium-molybdenum steel, gun-metal finish.

General ordering data

| | | |
|------------|----------------------------|---|
| Type | SDIS SLIM 0.6X3.5X100 | Version |
| Order No. | 2749610000 | Mounting tool, Blade width (B): 3.5 mm, Blade length: 100 mm, Blade |
| GTIN (EAN) | 4050118896350 | thickness (A): 0.6 mm |
| Qty. | 1 pc(s). | |

PRO TOP1 120W 24V 5A**Weidmüller Interface GmbH & Co. KG**

Klingenbergstraße 26

D-32758 Detmold

Germany

www.weidmueller.com

Accessories**BCF 3.81/180F**

PUSH IN - Weidmüller's innovative connection system simplifies the wire connection process.

The benefits for users and applications:

- High packaging density due to very low component height. Simply insert the prepared wire - finished
- High component density with the compact SCDN / SCDN-THR two-tier pin header
- Simplified processing due to integrated push buttons for opening the clamping unit
- Intuitive handling – since the wire-entry area and handling area are clearly separated
- tool-free locking and releasing when using Weidmüller's patented release latch (LR)

The Weidmüller plug-in connectors, pitch 3.81 mm (0.15 inch), are compatible with the layout of customary plug-in connectors, can be coded and provide space for printing.

General ordering data

| Type | BCF 3.81/03/180F SN BK ... | Version | Product data | Packaging |
|------------|----------------------------|---|--|-----------|
| Order No. | 1971570000 | PCB plug-in connector, female plug, 3.81 mm, Number of poles: 3, | IEC: 320 V / 17.5 A / 0.14 - 1.5 mm ² | Box |
| GTIN (EAN) | 4032248680504 | 180°, PUSH IN with actuator, Clamping range, max. : 1.5 mm ² , Box | UL: 300 V / 10 A / AWG 26 - AWG 16 | |
| Qty. | 50 pc(s). | | | |