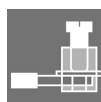
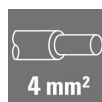


HDC AOC 6 MS**Weidmüller Interface GmbH & Co. KG**

Klingenbergstraße 26

D-32758 Detmold

Germany

www.weidmueller.com

A heavy-duty connector consists of a connector insert and its protective housing. The insert is therefore the heart of the heavy-duty connector. It is responsible for electrical functioning. Connector inserts from Weidmüller are made from high-quality insulation materials, which allow secure transmission of high voltages in a tight space. Moreover, we use only a single type of plastic in our entire product line. This plastic is UL listed, and suitable for railway applications. This allows unlimited world-wide use of the RockStar® connector.

General ordering data

Version	HDC insert, Pin, 500 V, 40 A, Number of poles: 6, Screw connection, Size: 3
Order No.	2466810000
Type	HDC AOC 6 MS
GTIN (EAN)	4050118501575
Qty.	1 pc(s).

HDC AOC 6 MS

Weidmüller Interface GmbH & Co. KG

Klingenbergstraße 26

D-32758 Detmold

Germany

www.weidmueller.com

Technical data

Dimensions and weights

Depth	34.8 mm	Depth (inches)	1.37 inch
Height	41.7 mm	Height (inches)	1.642 inch
Width	51 mm	Width (inches)	2.008 inch
Net weight	68.3 g		

Temperatures

Limit temperature	125 °C ... -40 °C
-------------------	-------------------

Dimensions

Width	51 mm
-------	-------

General data

BG	3	Colour	Light Grey
Free from halogens	false	Material	Polycarbonate, glass fibre reinforced
Number of poles	6	Pollution severity	3
Rated current (DIN EN 61984)	40 A	Rated impulse voltage (DIN EN 61984)	6 kV
Rated voltage (DIN EN 61984)	500 V	Size	3
Type	Pin	Type of connection	Screw connection
UL 94 flammability rating	V-0		

Connection data PE

Blade size, crosshead	0.6 x 3.5 mm	Stripping length PE connection	11 mm
-----------------------	--------------	--------------------------------	-------

Power contact

Tightening torque, max.	1.5 Nm	Tightening torque, min.	1.2 Nm
-------------------------	--------	-------------------------	--------

Signal contact

Tightening torque, max.	1.5 Nm	Tightening torque, min.	1.2 Nm
-------------------------	--------	-------------------------	--------

Version

BG	3	Material	Polycarbonate, glass fibre reinforced
Size	3	Type of connection	Screw connection

Classifications

ETIM 6.0	EC000438	ETIM 7.0	EC000438
ETIM 8.0	EC000438	ETIM 9.0	EC000438
ECLASS 9.0	27-44-02-05	ECLASS 9.1	27-44-02-05
ECLASS 10.0	27-44-02-05	ECLASS 11.0	27-44-02-05
ECLASS 12.0	27-44-02-05	ECLASS 13.0	27-44-02-05

Environmental Product Compliance

REACH SVHC	Lead 7439-92-1 Potassium perfluorobutane sulfonate 29420-49-3
SCIP	b67daa31-7dca-434d-8290-da7fb52f83a2

HDC AOC 6 MS

Weidmüller Interface GmbH & Co. KG

Klingenbergstraße 26

D-32758 Detmold

Germany

www.weidmueller.com

Technical data

Downloads

Engineering Data

[CAD data – STEP](#)

Catalogues

[Catalogues in PDF-format](#)

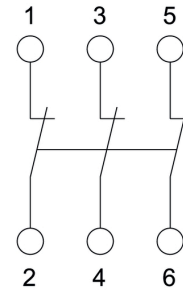
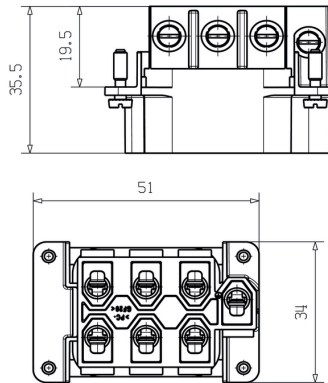
HDC AOC 6 MS

Weidmüller Interface GmbH & Co. KG
Klingenbergstraße 26
D-32758 Detmold
Germany

www.weidmueller.com

Drawings

Connection diagram



Three-phase Anti-open Circuit Diagram