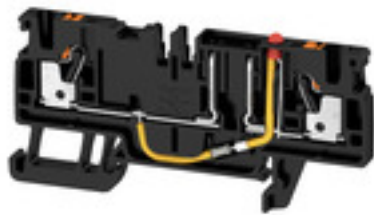


AFS 2.5 CF 2C 24V BK**Weidmüller Interface GmbH & Co. KG**

Klingenbergstraße 26

D-32758 Detmold

Germany

www.weidmueller.com**Product image**

In some applications it is useful to protect the feed through connection with a separate fuse. Fuse terminal blocks are made up of one terminal block bottom section with a fuse insertion carrier. The fuses vary from pivoting fuse levers and pluggable fuse holders to screwable closures and flat plug-in fuses.

General ordering data

| | |
|------------|---|
| Version | Fuse terminal, PUSH IN, 2.5 mm ² , 24 V, 10 A, black |
| Order No. | 2466600000 |
| Type | AFS 2.5 CF 2C 24V BK |
| GTIN (EAN) | 4050118480726 |
| Qty. | 50 pc(s). |

AFS 2.5 CF 2C 24V BK

Weidmüller Interface GmbH & Co. KG

Klingenbergstraße 26

D-32758 Detmold

Germany

www.weidmueller.com

Technical data

Dimensions and weights

| | | | |
|--------------------------|------------|----------------|------------|
| Depth | 37.65 mm | Depth (inches) | 1.482 inch |
| Depth including DIN rail | 38.4 mm | Height | 77.5 mm |
| Height (inches) | 3.051 inch | Width | 5.1 mm |
| Width (inches) | 0.201 inch | Net weight | 9.52 g |

Temperatures

| | | | |
|----------------------------------|----------------|----------------------------------|--------|
| Storage temperature | -25 °C...55 °C | Continuous operating temp., min. | -60 °C |
| Continuous operating temp., max. | 130 °C | | |

Material data

| | | | |
|----------|-------|--------|-------|
| Material | Wemid | Colour | black |
|----------|-------|--------|-------|

System specifications

| | | | |
|-------------------------------------|----------|-------------------------------|-------|
| Version | with LED | End cover plate required | Yes |
| Number of potentials | 1 | Number of levels | 1 |
| Number of clamping points per level | 2 | Number of potentials per tier | 1 |
| PE connection | No | Rail | TS 35 |
| N-function | No | PE function | No |
| PEN function | No | | |

Additional technical data

| | | | |
|-------------------|---------|------------------|-------|
| Open sides | right | Snap-on | No |
| Type of fixing | Snap-on | Type of mounting | TS 35 |
| With snap-in pegs | No | | |

CSA rating data

| | | | |
|-------------------------------|-----------------|-------------------------------|--------|
| Certificate No. (CSA) | 200039-70089609 | Current size B (CSA) | 16 A |
| Current size C (CSA) | 16 A | Voltage size B (CSA) | 300 V |
| Voltage size C (CSA) | 300 V | Wire cross section max. (CSA) | 12 AWG |
| Wire cross section min. (CSA) | 28 AWG | | |

Conductors for clamping (additional connection)

Connection type, additional connection PUSH IN

Conductors for clamping (rated connection)

| | |
|--|----------------------|
| Blade size | 0.6 x 3.5 mm |
| Clamping range, max. | 4 mm ² |
| Clamping range, min. | 0.14 mm ² |
| Connection cross-section, stranded, max. | 2.5 mm ² |
| Connection cross-section, stranded, min. | 0.5 mm ² |
| Connection direction | top |
| Gauge to IEC 60947-1 | A3 |
| Number of connections | 2 |
| Stripping length | 10 mm |

AFS 2.5 CF 2C 24V BK

Weidmüller Interface GmbH & Co. KG

Klingenbergstraße 26

D-32758 Detmold

Germany

www.weidmueller.com

Technical data

| | | | |
|---|--|---------|----------------------|
| Tube length for twin wire-end ferrule | Tube length | max. | 12 mm |
| | | min. | 8 mm |
| | Cross-section for conductor connection | min. | 0.5 mm ² |
| | | max. | 0.75 mm ² |
| Tube length for wire-end ferrule with plastic collar DIN 46228/4 | Cross-section for conductor connection | min. | 0.34 mm ² |
| | | max. | 0.14 mm ² |
| | Tube length | max. | 6 mm |
| | | min. | 8 mm |
| | Cross-section for conductor connection | min. | 1 mm ² |
| | | max. | 0.5 mm ² |
| | Tube length | max. | 6 mm |
| | | min. | 12 mm |
| | Cross-section for conductor connection | min. | 2.5 mm ² |
| | | max. | 1.5 mm ² |
| | Tube length | max. | 8 mm |
| | | min. | 12 mm |
| Tube length for wire-end ferrule without plastic collar DIN 46228/1 | Cross-section for conductor connection | nominal | 0.25 mm ² |
| | | nominal | 5 mm |
| | Cross-section for conductor connection | min. | 0.5 mm ² |
| | | max. | 1 mm ² |
| | Tube length | max. | 10 mm |
| | | min. | 6 mm |
| | Cross-section for conductor connection | min. | 1.5 mm ² |
| | | max. | 4 mm ² |
| | Tube length | max. | 12 mm |
| | | min. | 7 mm |
| Twin wire-end ferrules, max. | 0.75 mm ² | | |
| Twin wire-end ferrules, min. | 0.5 mm ² | | |
| Type of connection | PUSH IN | | |
| Type of connection 2 | PUSH IN | | |
| Wire connection cross section AWG, max. | AWG 12 | | |
| Wire connection cross section AWG, min. | AWG 28 | | |
| Wire connection cross section, finely stranded, max. | 2.5 mm ² | | |
| Wire connection cross section, finely stranded, min. | 0.5 mm ² | | |
| Wire connection cross-section, finely stranded with wire-end ferrules DIN 46228/1, max. | 2.5 mm ² | | |
| Wire connection cross-section, finely stranded with wire-end ferrules DIN 46228/1, min. | 0.5 mm ² | | |
| Wire connection cross-section, finely stranded with wire-end ferrules DIN 46228/4, max. | 2.5 mm ² | | |
| Wire connection cross-section, finely stranded with wire-end ferrules DIN 46228/4, min. | 0.5 mm ² | | |
| Wire connection cross-section, solid core, max. | 2.5 mm ² | | |
| Wire connection cross-section, solid core, min. | 0.5 mm ² | | |

Fuse terminals

| | | | |
|--------------------------------|-----------|-----------------------|---------|
| Cartridge fuse | mini fuse | Display | Red LED |
| Fuse holder (cartridge holder) | Pivoting | Leakage current, max. | 0.5 mA |

Creation date July 6, 2024 5:26:31 AM CEST

AFS 2.5 CF 2C 24V BK

Weidmüller Interface GmbH & Co. KG

Klingenbergstraße 26

D-32758 Detmold

Germany

www.weidmueller.com

Technical data

General

| | | | |
|---|--------|---|----------------------------------|
| Rail | TS 35 | Standards | In accordance with IEC 60947-7-3 |
| Wire connection cross section AWG, max. | AWG 12 | Wire connection cross section AWG, min. | AWG 28 |

Rating data

| | | | |
|---|----------------------------------|--|---------|
| Rated cross-section | 2.5 mm ² | Rated voltage | 24 V |
| Rated voltage to adjoining terminal | 500 V | Rated DC voltage | 24 V |
| Rated current | 10 A | Current at maximum wires | 10 A |
| Standards | In accordance with IEC 60947-7-3 | Volume resistance according to IEC 60947-7-x | 1.33 mΩ |
| Power loss in accordance with IEC 60947-7-x | 0.77 W | Pollution severity | 3 |
| Surge voltage category | III | | |

UL rating data

| | | | |
|--|--------|--|--------|
| Certificate No. (cURus) | E60693 | Conductor size Factory wiring max. (cURus) | 12 AWG |
| Conductor size Factory wiring min. (cURus) | 28 AWG | Conductor size Field wiring max. (cURus) | 12 AWG |
| Conductor size Field wiring min. (cURus) | 28 AWG | Current size B (cURus) | 16 A |
| Current size C (cURus) | 16 A | Current size D (cURus) | 10 A |
| Voltage size B (cURus) | 300 V | Voltage size C (cURus) | 300 V |
| Voltage size D (cURus) | 300 V | | |

Classifications

| | | | |
|-------------|-------------|-------------|-------------|
| ETIM 6.0 | EC000899 | ETIM 7.0 | EC000899 |
| ETIM 8.0 | EC000899 | ETIM 9.0 | EC000899 |
| ECLASS 9.0 | 27-14-11-16 | ECLASS 9.1 | 27-14-11-16 |
| ECLASS 10.0 | 27-14-11-16 | ECLASS 11.0 | 27-14-11-16 |
| ECLASS 12.0 | 27-14-11-16 | ECLASS 13.0 | 27-25-01-13 |

Environmental Product Compliance

REACH SVHC /

Important note

Product information The voltage depends on the selected fuse element or the selected indicator light

Approvals

Approvals



UL File Number Search UL Website

Certificate No. (cURus) E60693

AFS 2.5 CF 2C 24V BK

Weidmüller Interface GmbH & Co. KG
Klingenbergstraße 26
D-32758 Detmold
Germany

www.weidmueller.com

Technical data

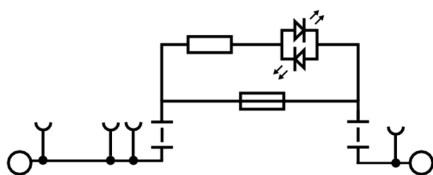
Downloads

| | |
|---|--|
| Approval/Certificate/Document of Conformity | DE PT0102 2017 1010 042 ISSUE01.pdf DNVGL certificate UKCA declaration of conformity |
| Engineering Data | CAD data – STEP |
| Tender specification | Klippon® Connect 2466600000 EN Klippon® Connect 2466600000 DE |
| User Documentation | StorageConditionsTerminalBlocks User Manual AFS |
| Catalogues | Catalogues in PDF-format |

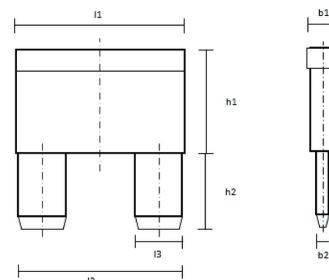
AFS 2.5 CF 2C 24V BK

Weidmüller Interface GmbH & Co. KG
Klingenbergstraße 26
D-32758 Detmold
Germany

www.weidmueller.com

Drawings

DIN 72581-3:2001-03



| b1 | b2 | h1 | h2 | l1 | l2 | l3 |
|----|------|----|-----|----|------|-----|
| mm | mm | mm | mm | mm | mm | mm |
| 4 | 0.82 | 9 | 7.5 | 12 | 10.9 | 2.8 |