

**ACT20X-HUI-SAO-P****Weidmüller Interface GmbH & Co. KG**

Klingenbergstraße 26

D-32758 Detmold

Germany

www.weidmueller.com

**Product image, Similar to illustration**

The ACT 20X HUI-SAO-S/ SAO-LP universal measurement and signal isolating converters can be configured individually.

Temperature signals from PT100 sensors and thermocouples as well as analogue DC current and voltage signals can be recorded from Ex zone 0.

On the output side, optional current/voltage (SAO-S) or 4...20 mA current loop signals (SAO-LP / SAO-S) are provided for the safe zone.

The ACT20X-HUI-SAO-S also has a relay output for configuring its switching threshold.

An integrated alarm contact is available on this device for issuing an alert in the event of a malfunction. This makes troubleshooting easier and also increases system availability.

The power supply of the signal isolating converter is either done using the integrated power supply (SAO-S) or alternatively over the output-side current loop (SAO-LP). The rail mountable devices are designed with one channel, and are optionally available in widths of 12.5 mm (SAO-LP) or 22.5 mm (SAO-S).

**General ordering data**

Version	EX signal isolating converter, Ex-output: U, I, R, 9, Safe-output: 4-20mA/ relay, 1-channel
Order No.	<a href="#">2456200000</a>
Type	ACT20X-HUI-SAO-P
GTIN (EAN)	4050118471601
Qty.	1 pc(s).

# ACT20X-HUI-SAO-P

**Weidmüller Interface GmbH & Co. KG**

Klingenbergstraße 26

D-32758 Detmold

Germany

[www.weidmueller.com](http://www.weidmueller.com)

## Technical data

### Dimensions and weights

Depth	114.6 mm	Depth (inches)	4.512 inch
Height	127.3 mm	Height (inches)	5.012 inch
Width	22.5 mm	Width (inches)	0.886 inch
Net weight	202 g		

### Temperatures

Storage temperature	-20 °C...85 °C	Operating temperature	-20 °C...60 °C
Humidity	0...95 % (no condensation)		

### Probability of failure

SIL PAPER	SIL certificate	SIL in compliance with IEC 61508	2
-----------	-----------------	----------------------------------	---

### Assembling

Mounting position	horizontal or vertical	Rail	TS 35
Type of mounting	DIN rail		

### Input EX

Input current	0...20 mA, 4...20 mA	Input resistance	configurable, 0...10 kΩ
Input resistance, current	20 Ω + PTC 50 Ω	Input resistance, voltage	> 10 MΩ @ 600 mV, 2 MΩ @ 28 V
Input voltage	configurable, 0...1 V DC, 0,2...1 V DC, 1...5 V DC, 0...(5)10 V, 2...10 V DC	Line resistance in measuring circuit	≤ 50 Ω
Potentiometer		Sensor	2-/3-/4-wire, RTD: PT10, PT20, PT50, PT100, PT250, PT300, PT400, PT500, PT1000, Ni50, Ni100, Ni120, Ni1000, Thermocouples: B, E, J, K, N, R, S, T ; in compliance with IEC 60584-1 and L, U in compliance with DIN43710, Potentiometer, Resistance: 0 - 12 kΩ
Sensor supply	10 Ω...10 kΩ	Temperature input range	Configurable, PT100: -200...+850 °C, PT200: -200...+850 °C, PT1000: -200...+850 °C, NI100: -60°C...+250 °C, Ni120: -80 °C...+320 °C, NI1000: -60°C...+250 °C, B: +100...+1820 °C, E: (-100...+1000 °C), J: (-100...+1200 °C), K: (-180...+1372 °C), L: (-200...+900 °C), N: (-180...+1300 °C), R: (-50...+1760 °C), S: (-50...+1760 °C), T: (-200...+400 °C), U: (-200...+600 °C), W3: (0...+2300 °C), W5: (0...+2300 °C), LR: (-200...+800 °C)
	21.4...16.5 V DC / 0...20 mA		
Type	intrinsically safe circuit		

## ACT20X-HUI-SAO-P

Weidmüller Interface GmbH &amp; Co. KG

Klingenbergstraße 26

D-32758 Detmold

Germany

www.weidmueller.com

## Technical data

## Output

Load impedance current		Output current	0...23 mA, configurable: 0...20 / 4...20 / 20...0 / 20...4 mA, configurable downscale (3.5 mA) / up- scale (23 mA) @ error
	$\leq 600 \Omega$		
Output signal limit	3.8...20.5 mA / 0...20.5 mA (dependent on range)	Type	active (as current source) or passive (as current sink)

## Digital output

Continuous current	$\leq 2 \text{ A AC/DC}$ (safe area, Zone 2 area)	Function	Configurable switching thresholds, Window func- tion, Sensor error
Max. switching frequency		Nominal switching voltage	$\leq 250 \text{ V AC} / 30 \text{ V DC}$ (safe area) $\leq 32 \text{ V AC} / 32 \text{ V DC}$ (zone 2)
	20 Hz		
Power rating	$\leq 500 \text{ VA} / 60 \text{ W}$ (safe area) $\leq 16 \text{ VA} / 32 \text{ W}$ (Zone 2)	Type	Relay, 1 NO / NC contact

## Alarm output

Alarm function	Short circuit at input, Open circuit at input, No supply voltage, Device error	Continuous current	$\leq 0.5 \text{ A AC} / 0.3 \text{ A DC}$ (safe zone), $\leq 0.5 \text{ A AC} / 1$ $\text{A DC}$ (zone 2)
Nominal switching voltage	$\leq 125 \text{ V AC} / 110 \text{ V DC}$ (safe area) $\leq 32 \text{ V AC} / 32 \text{ V DC}$ (zone 2)	Power rating	$\leq 62.5 \text{ VA} / 32 \text{ W}$ (safe area) $\leq 16 \text{ VA} / 32 \text{ W}$ (Zone 2)
Type	Status relay, 1 NC (volt- age-free)		

## General specifications

Configuration	With FDT/DTM software, Requires configuration adapter 8978580000 CBX200 USB	Humidity	0...95 % (no condensation)
Power consumption	$\leq 2.1 \text{ W}$	Protection degree	IP20
Type of connection	PUSH IN	Voltage supply	19.2...31.2 V DC

## Insulation coordination

EMC standards	EN 61326-1	Insulation voltage	2.6 kV (input / output)
Rated voltage	300 V	Standards	EN 61010-1

## Data for Ex applications (ATEX)

Current $I_0$	18.4 mA	Installation location	Device installed in safe area, zone 2
Marking	II (1) G [Ex ia Ga] IIC/IIB/ IIA, I (M1) [Ex ia Ma] I, II (1) G [Ex ia Ga] IIC, II (1) D [Ex ia Da] IIIC	Power $P_0$	40 mW
Voltage $U_0$	8.7 V DC		

# ACT20X-HUI-SAO-P

**Weidmüller Interface GmbH & Co. KG**

Klingenbergstraße 26

D-32758 Detmold

Germany

www.weidmueller.com

## Technical data

### Safety-related basic specifications

Description of the "safe state"	analogue Output $\leq 3.6$ mA or output $\geq 21$ mA, de-energized (relay output)	Device type	B
Diagnostic test interval	30 s	$T_{proof}$	4 a
Total failure rate for safe detected failures ( $\lambda_{SD}$ )	0 FIT	Hardware fault tolerance (HFT)	0
Safety category	SIL 2	Relay lifetime	100000 times
Safe Failure Fraction (SFF)	93 %	Mean Time To Repair (MTTR)	24 h
Total failure rate for safe undetected failures ( $\lambda_{SU}$ )	278 FIT	Total failure rate for dangerous detected failures ( $\lambda_{DD}$ )	352 FIT
Total failure rate for dangerous undetected failures ( $\lambda_{DU}$ )	43 FIT	Probability of outage PFH	$4.33 \times 10^{-8} \text{ h}^{-1}$
Demand mode	High	Demand rate	3,000 s
Demand response time	Signal input: $<0.5$ s (opto output), Temperature input: $<1.1$ s (opto output)		

### Safety-related specifications Low demand mode

Average Probability of Failure on Demand (PFD <sub>avg</sub> )	$2.82 \times 10^{-4}$ ( $T_{proof} = 1$ year), $4.63 \times 10^{-4}$ ( $T_{proof} = 2$ years), $1.00 \times 10^{-3}$ ( $T_{proof} = 5$ years), additional data in the safety manual
--	---

### Connection data

Type of connection	PUSH IN	Wire connection cross section AWG, min.	AWG 26
Wire connection cross section AWG, max.	AWG 14	Wire cross-section, solid, min.	0.2 mm <sup>2</sup>
Wire cross-section, solid, max.	2.5 mm <sup>2</sup>	Wire connection cross section, finely stranded, min.	0.2 mm <sup>2</sup>
Wire connection cross section, finely stranded, max.	2.5 mm <sup>2</sup>	Wire connection cross-section, finely stranded with wire-end ferrules DIN 46228/4, min.	0.2 mm <sup>2</sup>
Wire connection cross-section, finely stranded with wire-end ferrules DIN 46228/4, max.	2.5 mm <sup>2</sup>		

### Guarantee

Time interval	3 years
---------------	---------

### Classifications

ETIM 6.0	EC002653	ETIM 7.0	EC002653
ETIM 8.0	EC002653	ETIM 9.0	EC002653
ECLASS 9.0	27-21-01-20	ECLASS 9.1	27-21-01-20
ECLASS 10.0	27-21-01-20	ECLASS 11.0	27-21-01-20
ECLASS 12.0	27-21-01-20	ECLASS 13.0	27-21-01-20

### Environmental Product Compliance

REACH SVHC	Lead 7439-92-1
SCIP	2f6dd957-421a-46db-a0c2-cf1609156924

Creation date June 4, 2024 12:19:39 PM CEST

## ACT20X-HUI-SAO-P

Weidmüller Interface GmbH &amp; Co. KG

Klingenbergstraße 26

D-32758 Detmold

Germany

www.weidmueller.com

## Technical data

## Approvals

Approvals



ROHS	Conform
UL File Number Search	UL Website
Certificate no. (cULus)	E337701

## Downloads

Approval/Certificate/Document of Conformity	<a href="#">Certification SIL</a> <a href="#">Certification DNV GL</a> <a href="#">Certification ATEX</a> <a href="#">Certification IECEx</a> <a href="#">Certification UL</a> <a href="#">Declaration of Conformity</a>
Engineering Data	<a href="#">CAD data – STEP</a>
Software	<a href="#">WI-Manager, DTM-Library for online installation</a> <a href="#">Release notes for Weidmueller FDT-DTM Software version</a>
User Documentation	<a href="#">Safety Manual for SIL application</a> <a href="#">Instruction sheet</a> <a href="#">Handbuch ACT20X- Serie, deutsch</a> <a href="#">Manual ACT20X- series, english</a> <a href="#">20210120 Security Advisory - WI-Manager affected by MundM Software fdtCONTAINER vulnerability</a>
Catalogues	<a href="#">Catalogues in PDF-format</a>

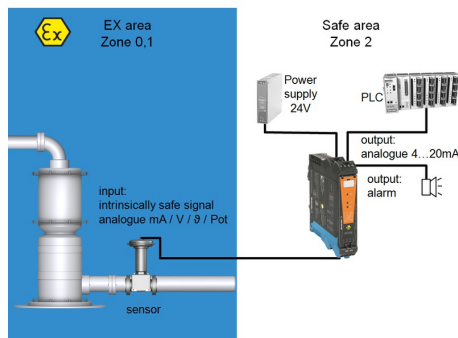
## ACT20X-HUI-SAO-P

**Weidmüller Interface GmbH & Co. KG**  
Klingenbergstraße 26  
D-32758 Detmold  
Germany

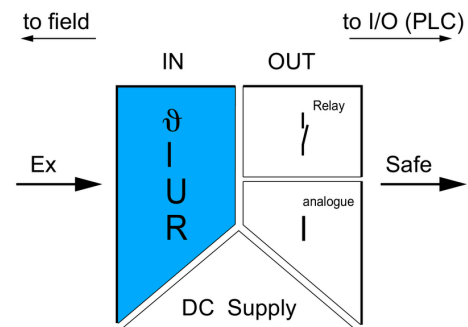
[www.weidmueller.com](http://www.weidmueller.com)

# Drawings

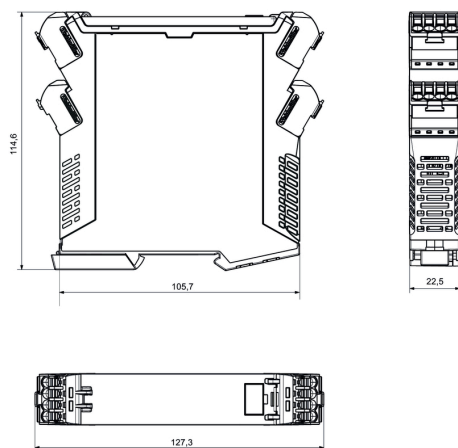
## Application



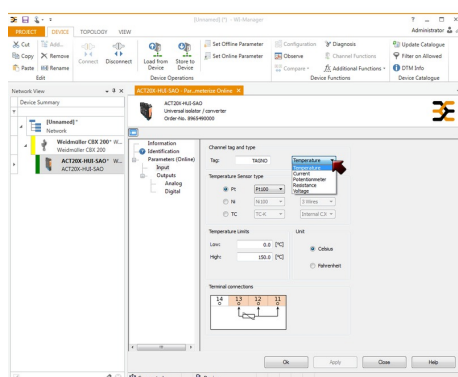
## Block diagram



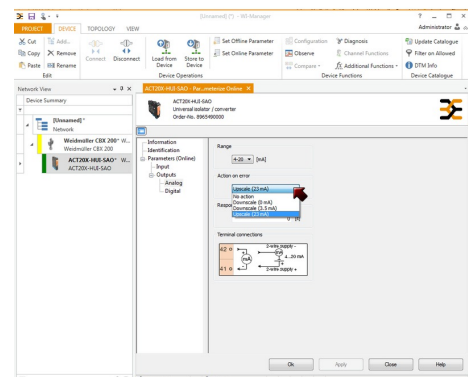
## Dimensioned drawing



## Similar to illustration



screenshot of temperature input configuration with FDT2 / DTM software



screenshot of output configuration with FDT2 / DTM software

Creation date June 4, 2024 12:19:39 PM CEST

Catalogue status 01.06.2024 / We reserve the right to make technical changes.

**ACT20X-HUI-SAO-P****Weidmüller Interface GmbH & Co. KG**

Klingenbergstraße 26

D-32758 Detmold

Germany

[www.weidmueller.com](http://www.weidmueller.com)**Accessories****Blank**

ESG is the tried-and-tested marker in MultiCard format for use on many well-known electrical devices. The result is high-quality device marking with a high-contrast appearance.

Various types are available for devices from manufacturers like Siemens, ABB, Beckhoff etc.

Advantages at a glance:

- Tags for universal usage, self-adhesive or clip-on tags, depending on type
- For aligned equipment, e.g. circuit breakers, we supply ESG markers for clipping onto tag rails
- Individual laser-quality printing according to specifications

**For custom printing:** Please send us a file of our labeling software M-Print PRO or M-Print PRO Online (without installation) for your labeling specifications.

**General ordering data**

Type	ESG 6.6/20 BHZ 5.00/04	Version
Order No.	<a href="#">1082540000</a>	ESG, Device markers x 20 mm, PA 66, Colour: white
GTIN (EAN)	4032248845439	
Qty.	200 pc(s).	

**ACT20X-HUI-SAO-P****Weidmüller Interface GmbH & Co. KG**

Klingenbergstraße 26

D-32758 Detmold

Germany

[www.weidmueller.com](http://www.weidmueller.com)**Accessories****Blank**

ESG is the tried-and-tested marker in MultiCard format for use on many well-known electrical devices. The result is high-quality device marking with a high-contrast appearance.

Various types are available for devices from manufacturers like Siemens, ABB, Beckhoff etc.

Advantages at a glance:

- Tags for universal usage, self-adhesive or clip-on tags, depending on type
- For aligned equipment, e.g. circuit breakers, we supply ESG markers for clipping onto tag rails
- Individual laser-quality printing according to specifications

**For custom printing:** Please send us a file of our labeling software M-Print PRO or M-Print PRO Online (without installation) for your labeling specifications.

**General ordering data**

Type	ESG 8/13.5/43.3 SAI AU	Version
Order No.	<a href="#">1912130000</a>	ESG, Device markers x 13.5 mm, PA 66, Colour: Transparent
GTIN (EAN)	4032248541164	
Qty.	5 pc(s).	

**Configuration interfaces****General ordering data**

Type	CBX200 USB
Order No.	<a href="#">8978580000</a>
GTIN (EAN)	4032248813759
Qty.	1 pc(s).

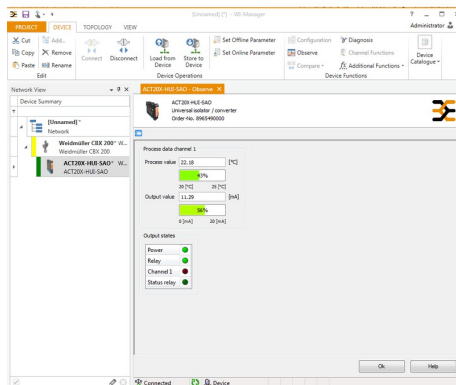


# ACT20X-HUI-SAO-P

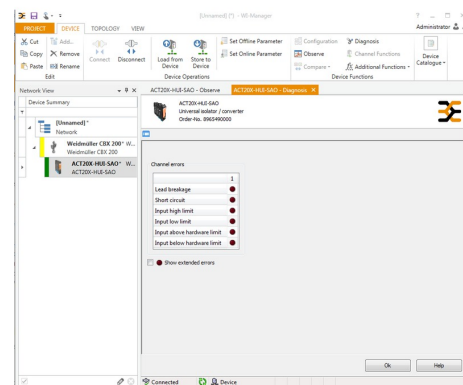
**Weidmüller Interface GmbH & Co. KG**  
 Klingenbergstraße 26  
 D-32758 Detmold  
 Germany

[www.weidmueller.com](http://www.weidmueller.com)

## Drawings



screenshot of "observe" with FDT2 / DTM software



screenshot of "diagnosis" with FDT2 / DTM software

## Connection diagram

