

ACT20X-2SAI-2HAO-P**Weidmüller Interface GmbH & Co. KG**

Klingenbergstraße 26

D-32758 Detmold

Germany

www.weidmueller.com

Product image, Similar to illustration

The ACT20X-SAI-HAO/2SAI-2HAO current output isolators are suitable for controlling field devices in Ex areas, up to Zone 0.

The input/output-side HART protocol transparent signal connection is implemented using 4 to 20 mA current loops.

Integrated alarm contacts issue an alert in the event of a malfunction; this makes troubleshooting easier and increases system availability.

The rail-mounted current output isolators are optionally available in one- or two-channel versions.

With 11 mm width per channel, the devices need little space in the electrical cabinet.

General ordering data

Version	EX signal isolating converter, Safe-input: 4-20mA, Ex output: 4 - 20 mA, HART® transparency, 2-channel
Order No.	2456170000
Type	ACT20X-2SAI-2HAO-P
GTIN (EAN)	4050118471571
Qty.	1 pc(s).

ACT20X-2SAI-2HAO-P**Weidmüller Interface GmbH & Co. KG**

Klingenbergstraße 26

D-32758 Detmold

Germany

www.weidmueller.com

Technical data**Dimensions and weights**

Depth	114.6 mm	Depth (inches)	4.512 inch
Height	127.3 mm	Height (inches)	5.012 inch
Width	22.5 mm	Width (inches)	0.886 inch
Net weight	212 g		

Temperatures

Storage temperature	-20 °C...85 °C	Operating temperature	-20 °C...60 °C
Humidity	0...95 % (no condensation)		

Probability of failure

SIL PAPER	SIL certificate	SIL in compliance with IEC 61508	2
MTBF	135 a		

Assembling

Mounting position	horizontal or vertical	Rail	TS 35
-------------------	------------------------	------	-------

Input

Input current	4...20mA	Number of inputs	2
Voltage drop	<2 V		

Output

2-wire supply	> 14.5 V @ 20 mA	Influence of load resistance	≤ 0.01% of span / 100 Ω
Load impedance current	≤ 725 Ω	Output current	4...20 mA (max. 23 mA)
Output signal limit	<28 mA	Residual ripple (current loop)	<7.5 mV _{eff}
Type	intrinsically safe circuit		

Alarm output

Alarm function	Signal limit exceeded, Line interruption at the input, No supply voltage, Device error	Continuous current	≤ 0.5 A AC / 0.3 A DC (safe zone), ≤ 0.5 A AC / 1 A DC (zone 2)
Hysteresis	0.1 mA (switching threshold)	Nominal switching voltage	≤ 125 V AC / 110 V DC (safe area) ≤ 32 V AC / 32 V DC (zone 2)
Power rating	≤ 62.5 VA / 32 W (safe area) ≤ 16 VA / 32 W (Zone 2)	Switching thresholds	0...29.9 mA (programmable)
Type	Status relay, 1 NC (voltage-free)		

ACT20X-2SAI-2HAO-P**Weidmüller Interface GmbH & Co. KG**

Klingenbergstraße 26

D-32758 Detmold

Germany

www.weidmueller.com

Technical data**General specifications**

Accuracy		Configuration	With FDT/DTM software, Requires configuration adapter 8978580000 CBX200 USB
	<0.1% span		
HART® transparency supported	Yes	Humidity	0...95 % (no condensation)
Operating altitude	≤ 2000 m	Power consumption	≤ 1.8 W
Protection degree	IP20	Step response time	≤ 5 ms
Temperature coefficient	<0.01% of span/°C (TU)	Type of connection	PUSH IN
Type of signal forwarding according to HART®	unchanged	Voltage supply	19.2...31.2 V DC

Insulation coordination

EMC standards	EN 61326-1	Insulation voltage	2.6 kV (input / output)
Rated voltage	300 V	Standards	EN 61010-1

Data for Ex applications (ATEX)

Current I ₀	93 mA	Installation location	Device installed in safe area, zone 2
Marking	II (1) G [Ex ia Ga] IIC/IIB/ IIA, II (1) D [Ex ia Da] IIIC, I (M1) [Ex ia Ma] I	Power P ₀	<650 mW
Voltage U ₀	28 V DC		

Safety-related basic specifications

Description of the "safe state"	analogue Output ≤ 3.6 mA or output ≥ 21 mA	Device type	A
T _{proof}	5 a	Total failure rate for safe detected failures (λ _{SD})	0 FIT
Hardware fault tolerance (HFT)	0	Safety category	SIL 2
Safe Failure Fraction (SFF)	85 %	Mean Time To Repair (MTTR)	24 h
Total failure rate for safe undetected fail- ures (λ _{SU})	164 FIT	Total failure rate for dangerous detected failures (λ _{DD})	127 FIT
Total failure rate for dangerous undetect- ed failures (λ _{DU})	48 FIT	Probability of outage PFH	4.8 x 10 ⁻⁸ h ⁻¹
Demand mode	High		

Safety-related specifications Low demand mode

Average Probability of Failure on De- mand (PFD _{avg})	2.29 x 10 ⁻⁴ (T _{proof} = 1 year), 4.37 x 10 ⁻⁴ (T _{proof} = 2 years), 1.06 x 10 ⁻⁴ (T _{proof} = 5 year)
---	---

ACT20X-2SAI-2HAO-P**Weidmüller Interface GmbH & Co. KG**

Klingenbergstraße 26

D-32758 Detmold

Germany

www.weidmueller.com

Technical data**Connection data**

Type of connection	PUSH IN	Wire connection cross section AWG, min.	AWG 26
Wire connection cross section AWG, max.	AWG 14	Wire cross-section, solid, min.	0.2 mm ²
Wire cross-section, solid, max.	2.5 mm ²	Wire connection cross section, finely stranded, min.	0.2 mm ²
Wire connection cross section, finely stranded, max.	2.5 mm ²	Wire connection cross-section, finely stranded with wire-end ferrules DIN 46228/4, min.	0.2 mm ²
Wire connection cross-section, finely stranded with wire-end ferrules DIN 46228/4, max.	2.5 mm ²		

Guarantee

Time interval	3 years
---------------	---------

Classifications

ETIM 6.0	EC002653	ETIM 7.0	EC002653
ETIM 8.0	EC002653	ETIM 9.0	EC002653
ECLASS 9.0	27-21-01-20	ECLASS 9.1	27-21-01-20
ECLASS 10.0	27-21-01-20	ECLASS 11.0	27-21-01-20
ECLASS 12.0	27-21-01-20	ECLASS 13.0	27-21-01-20

Environmental Product Compliance

REACH SVHC	Lead 7439-92-1
SCIP	2f6dd957-421a-46db-a0c2-cf1609156924
RoHS Compliance Status	Compliant with exemption
RoHS Exemption (if applicable/known)	7a, 7cl

Approvals

Approvals



ROHS	Conform
UL File Number Search	UL Website
Certificate no. (cULus)	E337701

ACT20X-2SAI-2HAO-P**Weidmüller Interface GmbH & Co. KG**

Klingenbergstraße 26

D-32758 Detmold

Germany

www.weidmueller.com**Technical data****Downloads**

Approval/Certificate/Document of Conformity	Application notes – Certification SIL Certification DNV GL Application notes – Certification ATEX Application notes – Certification IECEx Application notes – Certification UL Declaration of Conformity
Engineering Data	CAD data – STEP
Software	WI-Manager, DTM-Library for online installation Release notes for Weidmueller FDT-DTM Software version
User Documentation	Instruction sheet Safety Manual for SIL application Handbuch ACT20X- Serie, deutsch Manual ACT20X- series, english 20210120 Security Advisory - WI-Manager affected by MundM Software fdtCONTAINER vulnerability
Catalogues	Catalogues in PDF-format

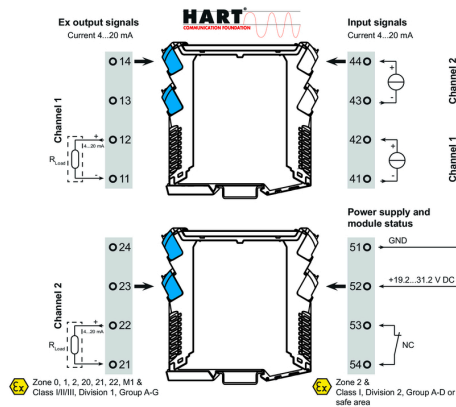
ACT20X-2SAI-2HAO-P

Weidmüller Interface GmbH & Co. KG
Klingenbergstraße 26
D-32758 Detmold
Germany

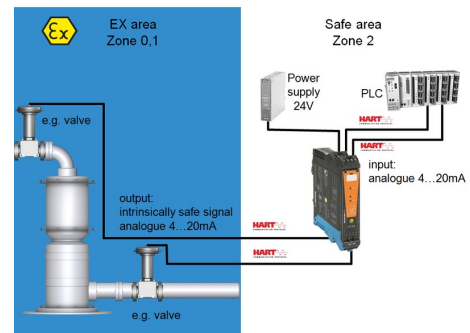
www.weidmueller.com

Drawings

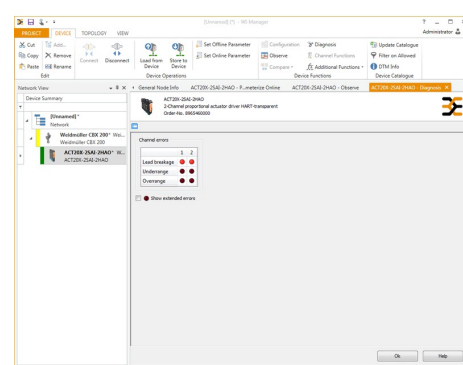
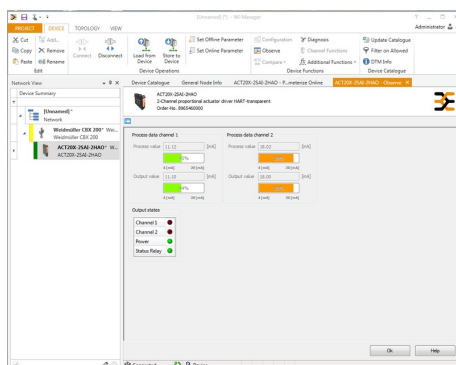
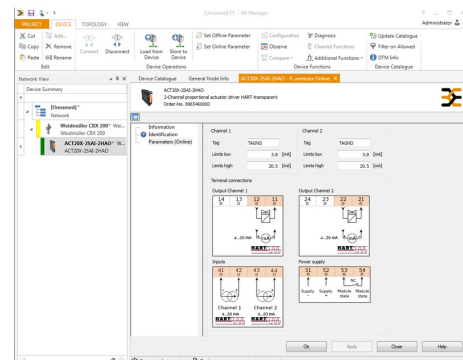
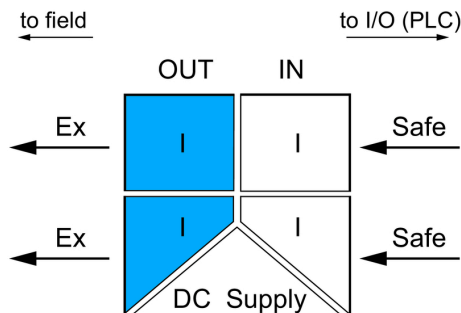
Connection diagram



Application



Block diagram



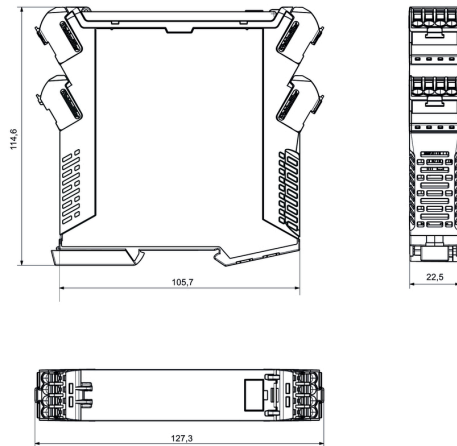
ACT20X-2SAI-2HAO-P

Weidmüller Interface GmbH & Co. KG
Klingenbergstraße 26
D-32758 Detmold
Germany

www.weidmueller.com

Drawings

Dimensioned drawing



Removable terminals with coding