

HDC IP68 04A AWS 1M25**Weidmüller Interface GmbH & Co. KG**

Klingenbergstraße 26

D-32758 Detmold

Germany

www.weidmueller.com**IP68**

The new RockStar® enclosures are resistant to seawater and offer a high degree of shock resistance, meet IP 68 and IP 69K, and have been developed for use under extreme environmental conditions and designed for the high vibration requirements acc. to DIN EN 61373 cat. 2 (bogie). As such, this housing family is ideally suited for fault- and maintenance-free operation of heavy-duty connectors in transport and traffic engineering as well as in power engineering and in applications with extreme requirements. During development, measures were also implemented to make the enclosures extremely EMC-resistant.

General ordering data

Version	HDC enclosures, Size: 1, Protection degree: IP66 (in plugged condition), IP68 (in plugged condition), Bulkhead housing, Clamping yoke connection, Standard, Size of cable entries: M 25
Order No.	2430170000
Type	HDC IP68 04A AWS 1M25
GTIN (EAN)	4050118439854
Qty.	1 pc(s).

Creation date June 5, 2024 4:33:56 PM CEST

Catalogue status 01.06.2024 / We reserve the right to make technical changes.

HDC IP68 04A AWS 1M25

Weidmüller Interface GmbH & Co. KG

Klingenbergstraße 26

D-32758 Detmold

Germany

www.weidmueller.com

Technical data

Dimensions and weights

Depth	50 mm	Depth (inches)	1.969 inch
Height	44 mm	Height (inches)	1.732 inch
Width	67 mm	Width (inches)	2.638 inch
Mounting dimension - height	41 mm	Mounting dimension - width	41 mm
Net weight	130 g		

Temperatures

Limit temperature	-50 °C ... 125 °C
-------------------	-------------------

Dimensions

Cable entry	w. thread	Height of housing B	44 mm
Hole pitch length A2	41 mm	Total length housing	50 mm

General data

EMC housings	Yes	Housing main material	diecast aluminium
Protection degree	IP66 (in plugged condition), IP68 (in plugged condition)	Surface finish	Powder coating

Version

BG	1	Cable entry	w. thread
Clamp version	Clamping yoke connection	Colour (RAL)	RAL 9011
Design	Standard	Design of housing	Bulkhead housing
Design of locking system	Clamping yoke connection	Internal thread	M 25
Number of cable entry on top	0	Number of cable entry sideways	1
Sealing	Silicone	Size	1
Size of cable entries	M 25	Suitable for ModuPlug®	No
Top part/bottom part/lid	lower part	Type	Bulkhead (feed-through)

Classifications

ETIM 6.0	EC000437	ETIM 7.0	EC000437
ETIM 8.0	EC000437	ETIM 9.0	EC000437
ECLASS 9.0	27-44-02-02	ECLASS 9.1	27-44-02-02
ECLASS 10.0	27-44-02-02	ECLASS 11.0	27-44-02-02
ECLASS 12.0	27-44-02-02	ECLASS 13.0	27-44-02-02

Substance	Acetone
Chemical resistance	Resistant
Substance	Diesel oil
Chemical resistance	Unstable
Substance	Ethyl alcohol
Chemical resistance	Resistant
Substance	Transmission oil
Chemical resistance	Conditionally resistant
Substance	Hydraulic oil
Chemical resistance	Conditionally resistant

HDC IP68 04A AWS 1M25**Weidmüller Interface GmbH & Co. KG**

Klingenbergstraße 26

D-32758 Detmold

Germany

www.weidmueller.com**Technical data**

Substance	Petroleum benzine
Chemical resistance	Unstable
Substance	Sweat
Chemical resistance	Conditionally resistant
Substance	Premium gasoline
Chemical resistance	Unstable
Substance	Water
Chemical resistance	Resistant
Substance	UV
Chemical resistance	Resistant
Substance	Ozone
Chemical resistance	Resistant

Important note

Product information

When mounting the housings, make sure that the flat gasket is correctly seated.

Approvals

Approvals

**Downloads**

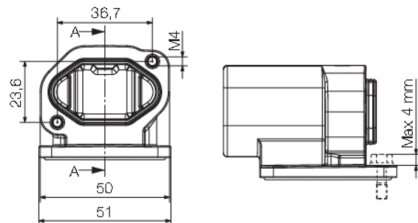
Engineering Data	CAD data – STEP
Product Change Notification	20220214 Technical change to HDC housings 20220214 Technische Änderung bei HDC-Gehäusen
Catalogues	Catalogues in PDF-format
Brochures	FL FIELDWIRING EN FL FIELDWIRING EN

HDC IP68 04A AWS 1M25

Weidmüller Interface GmbH & Co. KG
Klingenbergstraße 26
D-32758 Detmold
Germany

www.weidmueller.com

Drawings



HDC IP68 04A AWS 1M25**Weidmüller Interface GmbH & Co. KG**

Klingenbergstraße 26

D-32758 Detmold

Germany

www.weidmueller.com**Accessories****IP68 O-ring seals**

We offer a variety of accessories, including seals, to accompany the housings.

Because of the excellent sealing, you can achieve the best seal possible with our housings.

Extensive testing has confirmed it – RockStar® remains impermeable to water to a depth of 50 metres. This allows you to use heavy-duty connectors in environments which previously required fixed-wire installation.

General ordering data

Type	HDC DG 04A IP68	Version
Order No.	1987460000	Accessories, Enclosures accessories
GTIN (EAN)	4050118379259	
Qty.	100 pc(s).	

Flange seals

We offer a variety of accessories, including seals, to accompany the housings.

Because of the excellent sealing, you can achieve the best seal possible with our housings.

Extensive testing has confirmed it – RockStar® remains impermeable to water to a depth of 50 metres. This allows you to use heavy-duty connectors in environments which previously required fixed-wire installation.

General ordering data

Type	HDC FLDG 04A AW IP68	Version
Order No.	1987470000	Accessories, Enclosures accessories
GTIN (EAN)	4050118379204	
Qty.	100 pc(s).	