

IE-C6EL8UG0100U40XSH-E**Weidmüller Interface GmbH & Co. KG**

Klingenbergstraße 26

D-32758 Detmold

Germany

www.weidmueller.com

Assembled IE cables for EtherNet/IP applications with plug-in connector, type M12 X, cat. 6A, according to IEC 61076-2-109 and RJ45 plug-in connector for 10 GBit/s applications

General ordering data

| | |
|------------|--|
| Version | System cable, RJ45 IP 20, M12 X-type, flange, socket, back panel mounting, Cat.6 _A / Class E _A (ISO/IEC 11801 2010), PUR, 10 m |
| Order No. | 2124020100 |
| Type | IE-C6EL8UG0100U40XSH-E |
| GTIN (EAN) | 4050118425628 |
| Qty. | 1 pc(s). |

IE-C6EL8UG0100U40XSH-E

Weidmüller Interface GmbH & Co. KG

Klingenbergstraße 26

D-32758 Detmold

Germany

www.weidmueller.com

Technical data

Dimensions and weights

| | | | |
|------------|-------|-----------------|--------------|
| Length | 10 m | Length (inches) | 393.701 inch |
| Net weight | 500 g | | |

Temperatures

| | | | |
|--------------------------|----------------|-----------------------|----------------|
| Storage temperature | -40 °C...80 °C | Operating temperature | -40 °C...80 °C |
| Installation temperature | -20 °C...60 °C | | |

Cable specific standards

| | | | |
|---------------------|------------------------|--------------------|----------------|
| Impervious to smoke | According to IEC 61034 | Standard, assembly | UL Style 20963 |
|---------------------|------------------------|--------------------|----------------|

Standards

| | | | |
|---------------------|------------------------|--------------------|----------------|
| Impervious to smoke | According to IEC 61034 | Standard, assembly | UL Style 20963 |
|---------------------|------------------------|--------------------|----------------|

Cable structure

| | | | |
|---------------------------|--|---------------------------------------|--|
| Arrangement of wire cores | Twisted pair | Colour sequence or wires - wire pairs | white - blue, white - orange, white - green, white - brown |
| Complete shielding | Shielding braid made from copper wiring | Copper diameter | 0.48 µm |
| Cross-section | 4*2*AWG 26/7 - 4*2*0.128 mm ² | Insulation | PE |
| Insulation cross-section | 0.98 mm | Material sheath | PUR |
| Number of wires | 8 | Sheath diameter, max. | 6.7 mm |
| Sheath diameter, min. | 6.1 mm | Sheathing colour | green (RAL 6018) |
| Shielding | S/FTP | Shielding braid thickness | 0.1 mm |
| Standard designations | S/FTP, LIO2YSC11Y 4x2x0.15 PIMF FRNC GN | Strands | 7 |
| Wire material | Stranded tin-plated copper wire | Wire pair shielding | Aluminium foil |
| Wiring | EIA/TIA T568 B | | |

Electrical properties of cable

| | | | |
|--------------------------------|--|--------------------------|--|
| Category | Cat.6A / Class EA (ISO/IEC 11801 2010) | Characteristic impedance | 100 ± 5 Ω at 100MHz |
| Loop resistance | 290 Ω/km | Signal propagation time | 5.2 ns/m |
| Test voltage: wire-wire-shield | 700 V _{rms} , 50 Hz, 1 min | Transfer impedance | 15 mΩ/m at 1 MHz, 10 mΩ/m at 10 MHz, 30 mΩ/m at 30 MHz |
| Transmission rate | 10 Gbit/s | | |

Mechanical and material properties of cable

| | | | |
|---------------------------------|----------------------------------|--------------------------------|--|
| Abrasion resistance | very good | Halogen | halogen-free, according to IEC 60754-1 |
| Impervious to smoke | According to IEC 61034 | Min. bending radius, once only | 5 x cable diameter |
| Min. bending radius, repetitive | 10 x cable diameter | Resistance to oils | in accordance with IEC 60811-2-1 |
| Resistance to spread of flame | in accordance with IEC 60332-1-2 | | |

IE-C6EL8UG0100U40XSH-E**Weidmüller Interface GmbH & Co. KG**

Klingenbergstraße 26

D-32758 Detmold

Germany

www.weidmueller.com**Technical data****Plug, left**

| | |
|-----------|---|
| Plug left | RJ45, IP20, male contact, straight, plug, Plastic, shielded |
|-----------|---|

Plug, right

| | |
|------------|--|
| Plug right | M12, X-coded, IP67, female contact, straight, plug, flange, back panel mounting, Plastic, shielded |
|------------|--|

Classifications

| | | | |
|-------------|-------------|-------------|-------------|
| ETIM 6.0 | EC002599 | ETIM 7.0 | EC002599 |
| ETIM 8.0 | EC002599 | ETIM 9.0 | EC002599 |
| ECLASS 9.0 | 27-06-03-08 | ECLASS 9.1 | 27-06-03-08 |
| ECLASS 10.0 | 27-06-03-08 | ECLASS 11.0 | 27-06-03-08 |
| ECLASS 12.0 | 27-06-03-08 | ECLASS 13.0 | 27-06-03-08 |
| ECLASS 14.0 | 27-06-03-08 | | |

Environmental Product Compliance

| | |
|------------------------|--------------------------------------|
| REACH SVHC | Lead 7439-92-1 |
| SCIP | 67cf1078-beca-4687-860b-dc475a6ec24a |
| RoHS Compliance Status | Compliant |

Approvals

| | |
|------|---------|
| ROHS | Conform |
|------|---------|

Downloads

| | |
|--------------------|---|
| User Documentation | MAN IE GUIDE DE MAN IE GUIDE EN |
| Catalogues | Catalogues in PDF-format |
| Brochures | FL FIELDWIRING EN PI PROFINET CABLING EN |

IE-C6EL8UG0100U40XSH-E

Weidmüller Interface GmbH & Co. KG
 Klingenbergstraße 26
 D-32758 Detmold
 Germany

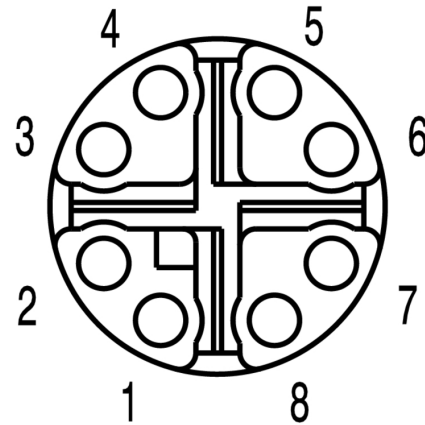
www.weidmueller.com

Drawings

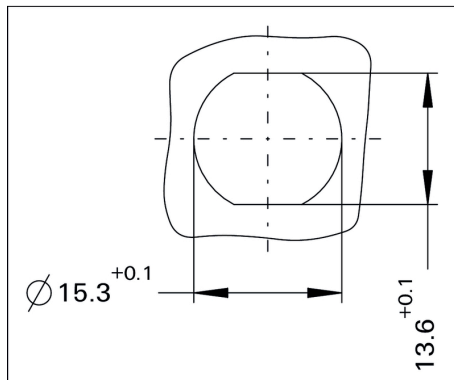
Wiring

| | | | | |
|------|---|---------------|---|-----|
| RJ45 | 1 | White, Orange | 1 | M12 |
| | 2 | Orange | 2 | |
| | 3 | White, Green | 3 | |
| | 4 | Blue | 8 | |
| | 5 | White, Blue | 7 | |
| | 6 | Green | 4 | |
| | 7 | White, Brown | 5 | |
| | 8 | Brown | 6 | |

Pinning



Detailed drawing



IE-C6EL8UG0100U40XSH-E**Weidmüller Interface GmbH & Co. KG**

Klingenbergstraße 26

D-32758 Detmold

Germany

www.weidmueller.com**Accessories****Blank**

TM-I is an acknowledged and accredited marker type for traffic engineering applications. There are various different tag lengths available for individual labelling with long character strings. Easy handling of separation and installation thanks to the project marker field. Pre-attachment of sleeves and retrofitting of tags offer excellent versatility

The special contour of TM-I allows easy assembly and secures firm positioning. They are compatible with a number of commercially available sleeves. Thanks to the MultiCard format, the tags can be printed quickly and conveniently with the PrintJet CONNECT, plotter or the STI pen.

- Easy handling of separation and installation thanks to the project marker field.
- Acknowledged and accredited marker for traffic engineering applications
- Pre-attachment of sleeves and retrofitting of tags offer excellent versatility
- Not suited for labelling with P-Ink or STI pen in connection with CLI T sleeves

For custom printing: Please send us a file of our labeling software M-Print PRO or M-Print PRO Online (without installation) for your labeling specifications.

General ordering data

| | | |
|------------|----------------------------|--|
| Type | TM-I 12 MC NE WS | Version |
| Order No. | 1718411044 | TM-I, Insert markers, 12 x 4 mm, white |
| GTIN (EAN) | 4008190348977 | |
| Qty. | 320 pc(s). | |

IE-C6EL8UG0100U40XSH-E**Weidmüller Interface GmbH & Co. KG**

Klingenbergstraße 26

D-32758 Detmold

Germany

www.weidmueller.com**Accessories****Blank**

TM-I is an acknowledged and accredited marker type for traffic engineering applications. There are various different tag lengths available for individual labelling with long character strings. Easy handling of separation and installation thanks to the project marker field. Pre-attachment of sleeves and retrofitting of tags offer excellent versatility

The special contour of TM-I allows easy assembly and secures firm positioning. They are compatible with a number of commercially available sleeves. Thanks to the MultiCard format, the tags can be printed quickly and conveniently with the PrintJet CONNECT, plotter or the STI pen.

- Easy handling of separation and installation thanks to the project marker field.
- Acknowledged and accredited marker for traffic engineering applications
- Pre-attachment of sleeves and retrofitting of tags offer excellent versatility
- Not suited for labelling with P-Ink or STI pen in connection with CLI T sleeves

For custom printing: Please send us a file of our labeling software M-Print PRO or M-Print PRO Online (without installation) for your labeling specifications.

General ordering data

| | | |
|------------|----------------------------|--|
| Type | TM-I 18 MC NE WS | Version |
| Order No. | 1718431044 | TM-I, Insert markers, 18 x 4 mm, white |
| GTIN (EAN) | 4008190349011 | |
| Qty. | 320 pc(s). | |