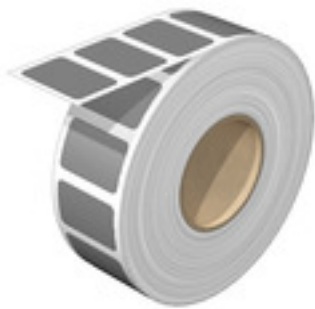


SM 27/18 MM GR**Weidmüller Interface GmbH & Co. KG**

Klingenbergstraße 26

D-32758 Detmold

Germany

www.weidmueller.com**Prevention of incorrect operation: SM**

MultiMark device markers can be used with marking materials from different manufacturers. Wherever they are used, they ensure that all components, such as control and signalling devices from different vendors, are clearly assigned.

Your benefits with MultiMark

- "Different materials for various requirements"
- Can be used with equipment from many manufacturers
- Device markers with a familiar design

General ordering data

Version	SwitchMark, Device markers, 18 x 27 mm, grey
Order No.	2006340000
Type	SM 27/18 MM GR
GTIN (EAN)	4050118391046
Qty.	1,000 pc(s).
compatible printer	2599430000 2599440000

SM 27/18 MM GR**Weidmüller Interface GmbH & Co. KG**

Klingenbergstraße 26

D-32758 Detmold

Germany

www.weidmueller.com**Technical data****Dimensions and weights**

Depth	0.1 mm	Depth (inches)	0.004 inch
Height	18 mm	Height (inches)	0.709 inch
Width	27 mm	Width (inches)	1.063 inch
Net weight	0.152 g		

Temperatures

Operating temperature range	-40...120 °C
-----------------------------	--------------

General data

Adhesive	Acrylate adhesive	Approval acc. to UL 969	Yes
Colour	grey	Halogen	No
Material	Polyester	Number per roll	1,000
Operating temperature range	-40...120 °C	Operating temperature range, max.	120 °C
Operating temperature range, min.	-40 °C	UL 94 flammability rating	V-0
Version	halogen-free, Self-adhesive	Width	27 mm

Device markers

Halogen	No
---------	----

Classifications

ETIM 6.0	EC001288	ETIM 7.0	EC001288
ETIM 8.0	EC001288	ETIM 9.0	EC001288
ECLASS 9.0	27-40-06-29	ECLASS 9.1	27-40-06-29
ECLASS 10.0	27-40-06-29	ECLASS 11.0	27-28-11-04
ECLASS 12.0	27-28-11-04	ECLASS 13.0	27-28-11-04

Approvals

ROHS	Conform
------	---------

Downloads

Engineering Data	CAD data – STEP
Catalogues	Catalogues in PDF-format

SM 27/18 MM GR

Weidmüller Interface GmbH & Co. KG

Klingenbergstraße 26

D-32758 Detmold

Germany

www.weidmueller.com

Drawings

