

**TM-I 30 MM WS****Weidmüller Interface GmbH & Co. KG**

Klingenbergstraße 26

D-32758 Detmold

Germany

[www.weidmueller.com](http://www.weidmueller.com)**Process reliability: TM-I**

TM-I inlay tags have a guide tab which allows them to slide easily into the transparent sleeves from the type TM. Once the tag is in place, the tab is snapped off at the pre-determined break point. The ready-assembled sleeves can then be simply pushed over the conductors. Your benefits: large quantities can be efficiently pre-assembled in a single step.

**General ordering data**

Version	TM-I, Insert markers, 30 x 4 mm, white
Order No.	<a href="#">2005530000</a>
Type	TM-I 30 MM WS
GTIN (EAN)	4050118390070
Qty.	2,000 pc(s).
compatible printer	<a href="#">2599430000</a> <a href="#">2599440000</a>

**TM-I 30 MM WS****Weidmüller Interface GmbH & Co. KG**

Klingenbergstraße 26

D-32758 Detmold

Germany

[www.weidmueller.com](http://www.weidmueller.com)**Technical data****Dimensions and weights**

Height	30 mm	Height (inches)	1.181 inch
Width	4 mm	Width (inches)	0.157 inch
Net weight	0.18 g		

**Temperatures**

Operating temperature range	-40...150 °C
-----------------------------	--------------

**General data**

Colour	white	Halogen	No
Material	Polyester	Number per roll	2,000
Operating temperature range	-40...150 °C	Operating temperature range, max.	150 °C
Operating temperature range, min.	-40 °C	Orientation of print	horizontal and vertical
Printed characters	without	Type of printing	neutral
UL 94 flammability rating	HB	Width	4 mm

**Conductor and cable markers**

Halogen	No
---------	----

**Classifications**

ETIM 6.0	EC001530	ETIM 7.0	EC001530
ETIM 8.0	EC001530	ETIM 9.0	EC001530
ECLASS 9.0	27-40-04-01	ECLASS 9.1	27-40-04-01
ECLASS 10.0	27-40-04-01	ECLASS 11.0	27-28-11-02
ECLASS 12.0	27-28-11-02	ECLASS 13.0	27-28-11-02

**Environmental Product Compliance**

REACH SVHC	/
------------	---

**Approvals**

ROHS	Conform
------	---------

**Downloads**

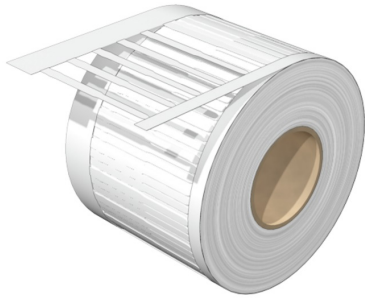
Engineering Data	<a href="#">CAD data – STEP</a>
Engineering Data	<a href="#">Zuken E3.S</a>
Catalogues	<a href="#">Catalogues in PDF-format</a>

**TM-I 30 MM WS**

**Weidmüller Interface GmbH & Co. KG**  
Klingenbergstraße 26  
D-32758 Detmold  
Germany

[www.weidmueller.com](http://www.weidmueller.com)

**Drawings**



**TM-I 30 MM WS****Weidmüller Interface GmbH & Co. KG**

Klingenbergstraße 26

D-32758 Detmold

Germany

[www.weidmueller.com](http://www.weidmueller.com)**Accessories****THM MULTIMARK PLUS**

These printers produce excellent printing results thanks to the thermal transfer technique. Different materials and the user-friendly printing system under Windows optimise marking efforts.

**General ordering data**

Type	MM PLUS ROLLER 110
Order No.	<a href="#">2672590000</a>
GTIN (EAN)	4050118708097
Qty.	1 pc(s).

**Ink ribbons**

These printers produce excellent printing results thanks to the thermal transfer technique. Different materials and the user-friendly printing system under Windows optimise marking efforts.

**General ordering data**

Type	RIBBON MM 76/360 SW	Version
Order No.	<a href="#">2005080000</a>	Ink ribbon
GTIN (EAN)	4050118389951	
Qty.	1 pc(s).	

## TM-I 30 MM WS

**Weidmüller Interface GmbH & Co. KG**  
Klingenbergstraße 26  
D-32758 Detmold  
Germany

[www.weidmueller.com](http://www.weidmueller.com)

## Accessories

### THM MULTIMARK



These printers produce excellent printing results thanks to the thermal transfer technique. Different materials and the user-friendly printing system under Windows optimise marking efforts.

### General ordering data

Type	THM MMP ROLLER 115
Order No.	<a href="#">1357420000</a>
GTIN (EAN)	4050118160314
Qty.	1 pc(s).