

**IE-OM-V04P-K21-2S****Weidmüller Interface GmbH & Co. KG**

Klingenbergstraße 26

D-32758 Detmold

Germany

[www.weidmueller.com](http://www.weidmueller.com)

Similar to illustration

Double junction box, design for PushPull plug-in connectors ver.4 according to IEC 61076-3-106, metal

**General ordering data**

Version	Junction box, IP67, Variant 4, 2 ports, straight
Order No.	<a href="#">1966250000</a>
Type	IE-OM-V04P-K21-2S
GTIN (EAN)	4032248658442
Qty.	1 pc(s).

**IE-OM-V04P-K21-2S****Weidmüller Interface GmbH & Co. KG**

Klingenbergstraße 26

D-32758 Detmold

Germany

[www.weidmueller.com](http://www.weidmueller.com)**Technical data****Dimensions and weights**

Depth	57 mm	Depth (inches)	2.244 inch
Width	136 mm	Width (inches)	5.354 inch
Length	125 mm	Length (inches)	4.921 inch
Net weight	475 g		

**Temperatures**

Operating temperature	-40 °C...70 °C
-----------------------	----------------

**General data**

Colour	grey	Housing main material	AL-Si 12
Plugging cycles	750	Protection degree	IP67
Type of mounting	Floor-mounted, Wall mounting		

**General standards**

Connector standard	IEC 61076-3-106 Var. 4
--------------------	------------------------

**Classifications**

ETIM 6.0	EC000261	ETIM 7.0	EC000261
ETIM 8.0	EC000261	ETIM 9.0	EC000261
ECLASS 9.0	27-18-01-01	ECLASS 9.1	27-18-92-90
ECLASS 10.0	27-18-01-01	ECLASS 11.0	27-18-01-01
ECLASS 12.0	27-18-01-01	ECLASS 13.0	27-18-01-01

**Environmental Product Compliance**

REACH SVHC	Lead 7439-92-1
SCIP	4f3aae94-c2bc-4010-b63b-5b114ba6bd55

**Approvals**

ROHS	Conform
------	---------

**Downloads**

Approval/Certificate/Document of Conformity	<a href="#">GOST Approval</a>
Engineering Data	<a href="#">CAD data – STEP</a>
User Documentation	<a href="#">MAN IE GUIDE DE</a> <a href="#">MAN IE GUIDE EN</a>
Catalogues	<a href="#">Catalogues in PDF-format</a>
Brochures	<a href="#">MB FREECONTACT EN</a> <a href="#">FL FIELDWIRING EN</a> <a href="#">PI PROFINET CABLING EN</a> <a href="#">PI PROFINET CABLING EN</a>

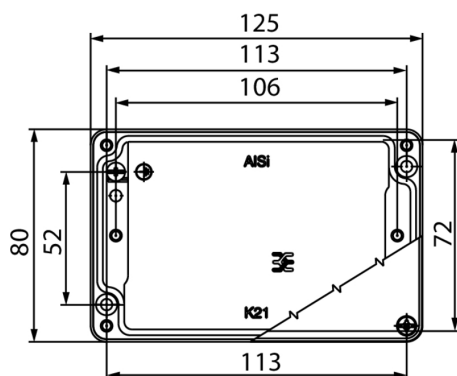
## IE-OM-V04P-K21-2S

**Weidmüller Interface GmbH & Co. KG**  
Klingenbergstraße 26  
D-32758 Detmold  
Germany

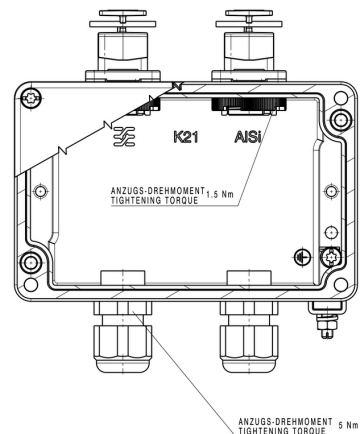
[www.weidmueller.com](http://www.weidmueller.com)

## Drawings

### Dimensioned drawing



### Drawing



## IE-OM-V04P-K21-2S

Weidmüller Interface GmbH &amp; Co. KG

Klingenbergstraße 26

D-32758 Detmold

Germany

www.weidmueller.com

## Accessories

## RJ45

RJ45 inserts for plug-in connectors ver.1 / 4 / 5 / 14,  
HDC and junction boxes IE-OM...; IE-OP...; IE-CC...



## General ordering data

Type	IE-BI-RJ45-FJ-B	Version
Order No.	<a href="#">1963840000</a>	RJ45 insert socket, Connector for base, TIA-568B
GTIN (EAN)	4032248651894	
Qty.	10 pc(s).	
Type	IE-BI-RJ45-FJ-P	Version
Order No.	<a href="#">1963830000</a>	RJ45 insert socket, Connector for base, PROFINET
GTIN (EAN)	4032248646159	
Qty.	10 pc(s).	
Type	IE-BI-RJ45-FJ-A	Version
Order No.	<a href="#">1962850000</a>	RJ45 insert socket, Connector for base, TIA-568A
GTIN (EAN)	4032248645053	
Qty.	10 pc(s).	

## Sets - RJ45

PushPull plug-in connector set according to IEC  
61076-3-106 ver.4 (IEC24702), plastic with RJ45 insert



## General ordering data

Type	IE-PS-V04P-RJ45-TH	Version
Order No.	<a href="#">1963180000</a>	RJ45 crimp plug, Version 4, Cat.6 <sub>A</sub> / Class E <sub>A</sub> (ISO/IEC 11801 2010)
GTIN (EAN)	4032248653973	
Qty.	10 pc(s).	
Type	IE-PS-V04P-RJ45-FH	Version
Order No.	<a href="#">1963160000</a>	RJ45 plug, no tools required, Version 4, Cat.6 <sub>A</sub> / Class E <sub>A</sub> (ISO/IEC 11801 2010)
GTIN (EAN)	4032248651665	
Qty.	10 pc(s).	