

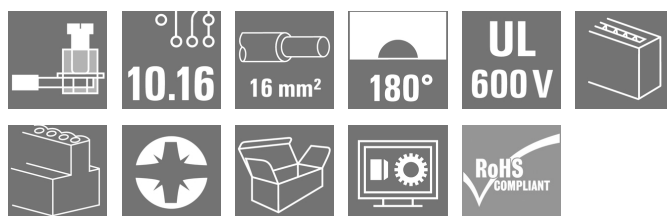
**BUZ 10.16HP/07/180 AG BK BX****Weidmüller Interface GmbH & Co. KG**

Klingenbergstraße 26

D-32758 Detmold

Germany

www.weidmueller.com

**Product image**

High-performance female header with the proven, 100% maintenance-free Weidmüller steel clamping yoke. Side-by-side mounting without sacrificing any poles or with patented multifunction flange for secure, fast fixing without tools. Maximum connection and operating reliability thanks to a mating profile that prevents incorrect connection, unique coding diversity, protection against incorrect wiring and 4-point silver contact.

**General ordering data**

|              |   |
|--------------|---|
| Version      | PCB plug-in connector, female plug, 10.16 mm, Number of poles: 7, 180°, Clamping yoke connection, Clamping range, max.: 16 mm², Box |
| Order No.    | <a href="#">1924590000</a>  |
| Type         | BUZ 10.16HP/07/180 AG BK BX   |
| GTIN (EAN)   | 4032248564101   |
| Qty.         | 16 pc(s).   |
| Product data | IEC: 1000 V / 78.3 A / 0.2 - 16 mm²<br>UL: 600 V / 60 A / AWG 22 - AWG 4  |
| Packaging    | Box   |

Creation date October 4, 2024 6:58:48 PM CEST

Catalogue status 28.09.2024 / We reserve the right to make technical changes.

**BUZ 10.16HP/07/180 AG BK BX****Weidmüller Interface GmbH & Co. KG**

Klingenbergstraße 26

D-32758 Detmold

Germany

www.weidmueller.com

**Technical data****Dimensions and weights**

|            |         |
|------------|---------|
| Net weight | 79.95 g |
|------------|---------|

**System Parameters**

|   |  |   |                    |
|---|--|---|--------------------|
| Product family                                  | OMNIMATE Power - series<br>BU/SU 10.16HP | Type of connection                            | Field connection   |
| Wire connection method                          | Clamping yoke connection                 | Pitch in mm (P)                               | 10.16 mm           |
| Pitch in inches (P)                             | 0.4 "                                    | Conductor outlet direction                    | 180°               |
| Number of poles                                 | 7  | L1 in mm                                      | 60.96 mm           |
| L1 in inches                                    | 2.4 "                                    | Number of rows                                | 1                  |
| Pin series quantity                             | 1  | Rated cross-section                           | 16 mm <sup>2</sup> |
| Touch-safe protection acc. to DIN VDE<br>57 106 | Safe from finger touch                   | Touch-safe protection acc. to DIN VDE<br>0470 | IP 20              |
| Volume resistance                               | 4.50 mΩ                                  | Can be coded                                  | Yes                |
| Stripping length                                | 12 mm                                    | Tightening torque, min.                       | 1.2 Nm             |
| Tightening torque, max.                         | 2 Nm                                     | Clamping screw                                | M 4                |
| Screwdriver blade                               | 1.0 x 5.5                                | Screwdriver blade standard                    | DIN 5264           |
| Plugging cycles                                 | 25                                       | Plugging force/pole, max.                     | 15.5 N             |
| Pulling force/pole, max.                        | 14.5 N                                   |   |                    |

**Material data**

|                                       |           |                                       |               |
|---------------------------------------|-----------|---------------------------------------|---------------|
| Insulating material                   | PA GF     | Colour                                | black         |
| Colour chart (similar)                | RAL 9011  | Insulating material group             | I             |
| Comparative Tracking Index (CTI)      | ≥ 600     | UL 94 flammability rating             | V-0           |
| Contact material                      | Cu-alloy  | Contact surface                       | silver-plated |
| Layer structure of plug contact       | ≥ 3 μm Ag | Storage temperature, min.             | -40 °C        |
| Storage temperature, max.             | 70 °C     | Operating temperature, min.           | -50 °C        |
| Operating temperature, max.           | 130 °C    | Temperature range, installation, min. | -25 °C        |
| Temperature range, installation, max. | 130 °C    |                                       |               |

**Conductors suitable for connection**

|   |                      |
|---|----------------------|
| Clamping range, min.  | 0.2 mm <sup>2</sup>  |
| Clamping range, max.  | 16 mm <sup>2</sup>   |
| Wire connection cross section AWG,<br>min.                              | AWG 22               |
| Wire connection cross section AWG,<br>max.                              | AWG 4                |
| Solid, min. H05(07) V-U   | 0.2 mm <sup>2</sup>  |
| Solid, max. H05(07) V-U   | 16 mm <sup>2</sup>   |
| Stranded, min. H07V-R   | 6 mm <sup>2</sup>    |
| Stranded, max. H07V-R   | 16 mm <sup>2</sup>   |
| Flexible, min. H05(07) V-K  | 0.5 mm <sup>2</sup>  |
| Flexible, max. H05(07) V-K  | 16 mm <sup>2</sup>   |
| w. plastic collar ferrule, DIN 46228 pt 4, 0.25 mm <sup>2</sup><br>min. |                      |
| w. plastic collar ferrule, DIN 46228 pt 4, 16 mm <sup>2</sup><br>max.   |                      |
| w. wire end ferrule, DIN 46228 pt 1,<br>min.                            | 0.25 mm <sup>2</sup> |
| w. wire end ferrule, DIN 46228 pt 1,<br>max.                            | 16 mm <sup>2</sup>   |
| Plug gauge in accordance with EN<br>60999 a x b; ø                      | 5.3mm (B6)           |

Creation date October 4, 2024 6:58:48 PM CEST

## BUZ 10.16HP/07/180 AG BK BX

Weidmüller Interface GmbH &amp; Co. KG

Klingenbergstraße 26

D-32758 Detmold

Germany

www.weidmueller.com

## Technical data

|  |  |                             |                     |
|--|--|-----------------------------|---------------------|
| Clampable conductor                    | Cross-section for conductor connection | Type                        | fine-wired          |
|  |  | nominal                     | 0.5 mm <sup>2</sup> |
| wire end ferrule                       | Stripping length                       | nominal                     | 14 mm               |
|  | Recommended wire-end ferrule           | <a href="#">H0.5/18 OR</a>  |                     |
| Cross-section for conductor connection | Type                                   | fine-wired                  |                     |
|  | nominal                                | 1 mm <sup>2</sup>           |                     |
| wire end ferrule                       | Stripping length                       | nominal                     | 15 mm               |
|  | Recommended wire-end ferrule           | <a href="#">H1.0/18 GE</a>  |                     |
| Cross-section for conductor connection | Type                                   | fine-wired                  |                     |
|  | nominal                                | 1.5 mm <sup>2</sup>         |                     |
| wire end ferrule                       | Stripping length                       | nominal                     | 15 mm               |
|  | Recommended wire-end ferrule           | <a href="#">H1.5/18D SW</a> |                     |
| Stripping length                       | nominal                                | 12 mm                       |                     |
|  | Recommended wire-end ferrule           | <a href="#">H1.5/12</a>     |                     |
| Cross-section for conductor connection | Type                                   | fine-wired                  |                     |
|  | nominal                                | 0.75 mm <sup>2</sup>        |                     |
| wire end ferrule                       | Stripping length                       | nominal                     | 14 mm               |
|  | Recommended wire-end ferrule           | <a href="#">H0.75/18 W</a>  |                     |
| Cross-section for conductor connection | Type                                   | fine-wired                  |                     |
|  | nominal                                | 2.5 mm <sup>2</sup>         |                     |
| wire end ferrule                       | Stripping length                       | nominal                     | 14 mm               |
|  | Recommended wire-end ferrule           | <a href="#">H2.5/19D BL</a> |                     |
| Stripping length                       | nominal                                | 12 mm                       |                     |
|  | Recommended wire-end ferrule           | <a href="#">H2.5/12</a>     |                     |
| Cross-section for conductor connection | Type                                   | fine-wired                  |                     |
|  | nominal                                | 4 mm <sup>2</sup>           |                     |
| wire end ferrule                       | Stripping length                       | nominal                     | 12 mm               |
|  | Recommended wire-end ferrule           | <a href="#">H4.0/12</a>     |                     |
| Stripping length                       | nominal                                | 14 mm                       |                     |
|  | Recommended wire-end ferrule           | <a href="#">H4.0/20D GR</a> |                     |
| Cross-section for conductor connection | Type                                   | fine-wired                  |                     |
|  | nominal                                | 6 mm <sup>2</sup>           |                     |
| wire end ferrule                       | Stripping length                       | nominal                     | 14 mm               |
|  | Recommended wire-end ferrule           | <a href="#">H6.0/20 SW</a>  |                     |
| Stripping length                       | nominal                                | 12 mm                       |                     |
|  | Recommended wire-end ferrule           | <a href="#">H6.0/12</a>     |                     |
| Cross-section for conductor connection | Type                                   | fine-wired                  |                     |
|  | nominal                                | 10 mm <sup>2</sup>          |                     |
| wire end ferrule                       | Stripping length                       | nominal                     | 12 mm               |
|  | Recommended wire-end ferrule           | <a href="#">H10.0/12</a>    |                     |
| Stripping length                       | nominal                                | 15 mm                       |                     |
|  | Recommended wire-end ferrule           | <a href="#">H10.0/22 EB</a> |                     |
| Cross-section for conductor connection | Type                                   | fine-wired                  |                     |
|  | nominal                                | 16 mm <sup>2</sup>          |                     |
| wire end ferrule                       | Stripping length                       | nominal                     | 12 mm               |
|  | Recommended wire-end ferrule           | <a href="#">H16.0/12</a>    |                     |
| Stripping length                       | nominal                                | 15 mm                       |                     |
|  | Recommended wire-end ferrule           | <a href="#">H16.0/22 GN</a> |                     |

Creation date October 4, 2024 6:58:48 PM CEST

**BUZ 10.16HP/07/180 AG BK BX****Weidmüller Interface GmbH & Co. KG**

Klingenbergstraße 26

D-32758 Detmold

Germany

www.weidmueller.com

**Technical data**

Reference text Length of ferrules is to be chosen depending on the product and the rated voltage.

**Rated data acc. to IEC**

|   |                        |   |                   |
|---|------------------------|---|-------------------|
| tested acc. to standard   | IEC 60664-1, IEC 61984 | Rated current, min. number of poles (Tu=20°C)                         | 78.3 A            |
| Rated current, max. number of poles (Tu=20°C)                             | 67.9 A                 | Rated current, min. number of poles (Tu=40°C)                         | 70.6 A            |
| Rated current, max. number of poles (Tu=40°C)                             | 61.3 A                 | Rated voltage for surge voltage class / pollution degree II/2         | 1,000 V           |
| Rated voltage for surge voltage class / pollution degree III/2            | 1,000 V                | Rated voltage for surge voltage class / pollution degree III/3        | 1,000 V           |
| Rated impulse voltage for surge voltage class/ pollution degree II/2      | 6 kV                   | Rated impulse voltage for surge voltage class/ pollution degree III/2 | 8 kV              |
| Rated impulse voltage for surge voltage class/ contamination degree III/3 | 8 kV                   | Short-time withstand current resistance                               | 3 x 1s mit 1000 A |
| Clearance, min.   | 15.1 mm                | Creepage distance, min.   | 15.1 mm           |

**Rated data acc. to CSA**

|                                   |  |                                   |                |
|-----------------------------------|--|-----------------------------------|----------------|
| Institute (CSA)                   |  | Certificate No. (CSA)             | 200039-1842490 |
| Rated voltage (Use group B / CSA) | 600 V  | Rated voltage (Use group C / CSA) | 600 V          |
| Rated voltage (Use group D / CSA) | 600 V  | Rated current (Use group B / CSA) | 60 A           |
| Rated current (Use group C / CSA) | 60 A   | Rated current (Use group D / CSA) | 5 A            |
| Wire cross-section, AWG, min.     | AWG 22   | Wire cross-section, AWG, max.     | AWG 4          |
| Reference to approval values      | Specifications are maximum values, details - see approval certificate.             |                                   |                |

**Rated data acc. to UL 1059**

|                                       |   |                                       |        |
|---------------------------------------|---|---------------------------------------|--------|
| Institute (cURus)                     |  | Certificate No. (cURus)               | E60693 |
| Rated voltage (Use group B / UL 1059) | 600 V   | Rated voltage (Use group C / UL 1059) | 600 V  |
| Rated voltage (Use group D / UL 1059) | 600 V   | Rated current (Use group B / UL 1059) | 60 A   |
| Rated current (Use group C / UL 1059) | 60 A  | Rated current (Use group D / UL 1059) | 5 A    |
| Wire cross-section, AWG, min.         | AWG 22  | Wire cross-section, AWG, max.         | AWG 4  |
| Reference to approval values          | Specifications are maximum values, details - see approval certificate.              |                                       |        |

**Packing**

|           |        |            |        |
|-----------|--------|------------|--------|
| Packaging | Box    | VPE length | 352 mm |
| VPE width | 139 mm | VPE height | 49 mm  |

**Type tests**

|                              |            |  |
|------------------------------|------------|--|
| Test: Durability of markings | Standard   | taking pattern from DIN EN 61984 section 7.3.2 / 04.02 DIN EN 60068-2-70 / 07.96                 |
|                              | Test       | mark of origin, type identification, pitch, approval marking cULus, type of material, durability |
|                              | Evaluation | available  |

Creation date October 4, 2024 6:58:48 PM CEST

Catalogue status 28.09.2024 / We reserve the right to make technical changes.

**BUZ 10.16HP/07/180 AG BK BX****Weidmüller Interface GmbH & Co. KG**

Klingenbergstraße 26

D-32758 Detmold

Germany

www.weidmueller.com

**Technical data**

|   |                |  |
|---|----------------|--|
| Test: Clampable cross section                             | Standard       | DIN EN 60999-1 section 7 and 9.1 / 12.00, DIN EN 60947-1 section 8.2.4.5.1 / 12.99 |
|   | Conductor type | Type of conductor and solid 0.5 mm <sup>2</sup> conductor cross-section            |
|   |                | Type of conductor and stranded 0.5 mm <sup>2</sup> conductor cross-section         |
|   |                | Type of conductor and solid 16 mm <sup>2</sup> conductor cross-section             |
|   |                | Type of conductor and stranded 16 mm <sup>2</sup> conductor cross-section          |
|   |                | Type of conductor and AWG 22/1 conductor cross-section                             |
|   |                | Type of conductor and AWG 22/19 conductor cross-section                            |
|   |                | Type of conductor and AWG 6/1 conductor cross-section                              |
|   |                | Type of conductor and AWG 6/19 conductor cross-section                             |
|   | Evaluation     | passed   |
| Test for damage to and accidental loosening of conductors | Standard       | DIN EN 60999-1 section 9.4 / 12.00   |
|   | Requirement    | 0.2 kg   |
|   | Conductor type | Type of conductor and solid 0.2 mm <sup>2</sup> conductor cross-section            |
|   |                |  |
|   | Evaluation     | passed   |
|   | Requirement    | 0.3 kg   |
|   | Conductor type | Type of conductor and stranded 0.5 mm <sup>2</sup> conductor cross-section         |
|   |                | Type of conductor and AWG 22/1 conductor cross-section                             |
|   |                | Type of conductor and AWG 22/19 conductor cross-section                            |
|   | Evaluation     | passed   |
|   | Requirement    | 2.9 kg   |
|   | Conductor type | Type of conductor and solid 16 mm <sup>2</sup> conductor cross-section             |
|   |                | Type of conductor and stranded 16 mm <sup>2</sup> conductor cross-section          |
|   |                | Type of conductor and AWG 6/7 conductor cross-section                              |
|   | Evaluation     | passed   |

**BUZ 10.16HP/07/180 AG BK BX****Weidmüller Interface GmbH & Co. KG**

Klingenbergstraße 26

D-32758 Detmold

Germany

www.weidmueller.com

**Technical data**

|               |                |   |
|---------------|----------------|---|
| Pull-out test | Standard       | DIN EN 60999-1 section 9.5 / 12.00                                      |
|               | Requirement    | ≥10 N   |
|               | Conductor type | Type of conductor and solid 0.2 mm <sup>2</sup> conductor cross-section |
|               | Evaluation     | passed  |
|               | Requirement    | ≥15 N   |
|               | Conductor type | Type of conductor and AWG 22/1 conductor cross-section                  |
|               |                | Type of conductor and AWG 22/19 conductor cross-section                 |
|               | Evaluation     | passed  |
|               | Requirement    | ≥20 N   |
|               | Conductor type | Type of conductor and H05V-K0.5 conductor cross-section                 |
|               | Evaluation     | passed  |
|               | Requirement    | ≥100 N  |
|               | Conductor type | Type of conductor and H07V-U16 conductor cross-section                  |
|               |                | Type of conductor and H07V-K16 conductor cross-section                  |
|               |                | Type of conductor and AWG 6/7 conductor cross-section                   |
|               | Evaluation     | passed  |

**Classifications**

|             |             |             |             |
|-------------|-------------|-------------|-------------|
| ETIM 6.0    | EC002638    | ETIM 7.0    | EC002638    |
| ETIM 8.0    | EC002638    | ETIM 9.0    | EC002638    |
| ECLASS 9.0  | 27-44-03-09 | ECLASS 9.1  | 27-44-03-09 |
| ECLASS 10.0 | 27-44-03-09 | ECLASS 11.0 | 27-46-02-02 |
| ECLASS 12.0 | 27-46-02-02 | ECLASS 13.0 | 27-46-02-02 |
| ECLASS 14.0 | 27-46-02-02 |             |             |

**Environmental Product Compliance**

|                        |                             |
|------------------------|-----------------------------|
| REACH SVHC             | /                           |
| RoHS Compliance Status | Compliant without exemption |

**BUZ 10.16HP/07/180 AG BK BX****Weidmüller Interface GmbH & Co. KG**

Klingenbergstraße 26

D-32758 Detmold

Germany

www.weidmueller.com

**Technical data****Important note**

|                |  |
|----------------|--|
| IPC conformity | Conformity: The products are developed, manufactured and delivered according international recognized standards and norms and comply with the assured properties in the data sheet resp. fulfill decorative properties in accordance with IPC-A-610 "Class 2". Further claims on the products can be evaluated on request.   |
| Notes          | <ul style="list-style-type: none"> <li>• Additional variants on request</li> <li>• Rated current related to rated cross-section &amp; min. No. of poles.</li> <li>• Wire end ferrule with plastic collar to DIN 46228/4</li> <li>• Wire end ferrule without plastic collar to DIN 46228/1</li> <li>• P on drawing = pitch</li> <li>• Rated data refer only to the component itself. Clearance and creepage distances to other components are to be designed in accordance with the relevant application standards.</li> <li>• In accordance with IEC 61984, OMNIMATE-connectors are connectors without breaking capacity (COC). During designated use, connectors are not allowed to be engaged or disengaged when live or under load</li> <li>• Long term storage of the product with average temperature of 50 °C and maximum humidity 70%, 36 months</li> </ul> |

**Approvals**

Approvals



|                         |            |
|-------------------------|------------|
| ROHS                    | Conform    |
| UL File Number Search   | UL Website |
| Certificate No. (cURus) | E60693     |

**Downloads**

|   |  |
|---|--|
| Approval/Certificate/Document of Conformity | <a href="#">Declaration of the Manufacturer</a>  |
| Engineering Data                            | <a href="#">CAD data – STEP</a>  |
| User Documentation                          | <a href="#">QR-Code product handling video</a>   |
| Catalogues                                  | <a href="#">Catalogues in PDF-format</a>   |
| Brochures                                   | <a href="#">FL DRIVES EN</a><br><a href="#">MB DEVICE MANUF. EN</a><br><a href="#">FL DRIVES DE</a><br><a href="#">FL HEATING ELECTR EN</a><br><a href="#">FL APPL INVERTER EN</a><br><a href="#">FL BASE STATION EN</a><br><a href="#">FL ELEVATOR EN</a><br><a href="#">FL POWER SUPPLY EN</a><br><a href="#">FL 72H SAMPLE SER EN</a><br><a href="#">PO OMNIMATE EN</a><br><a href="#">PO OMNIMATE EN</a> |

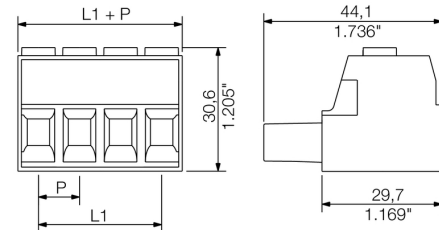
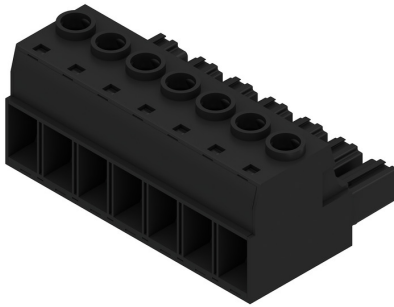
# BUZ 10.16HP/07/180 AG BK BX

**Weidmüller Interface GmbH & Co. KG**  
 Klingenbergstraße 26  
 D-32758 Detmold  
 Germany

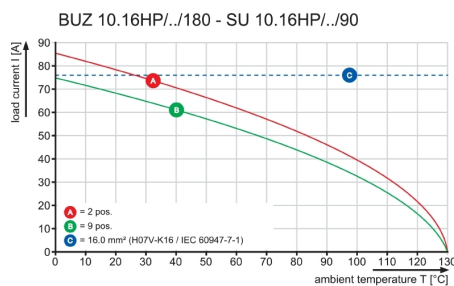
[www.weidmueller.com](http://www.weidmueller.com)

## Drawings

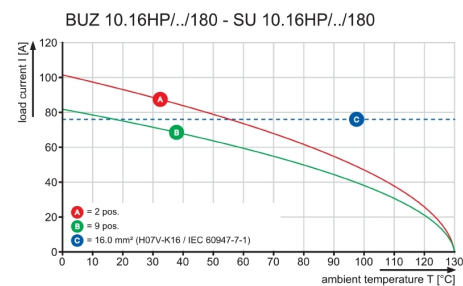
### Product image



### Graph



### Graph



### Graph





**BUZ 10.16HP/07/180 AG BK BX****Weidmüller Interface GmbH & Co. KG**

Klingenbergstraße 26

D-32758 Detmold

Germany

[www.weidmueller.com](http://www.weidmueller.com)**Accessories****Crosshead screwdriver Pozidriv**

Crosshead screwdriver, Pozidriv, SDK PZ DIN 5262, ISO 8764/2-PZ, output to ISO 8764/1-PZ, ChromTop tip, SoftFinish grip

**General ordering data**

|            |                            |                          |
|------------|----------------------------|--------------------------|
| Type       | SDK PZ2                    | Version                  |
| Order No.  | <a href="#">9008540000</a> | Screwdriver, Screwdriver |
| GTIN (EAN) | 4032248056538              |                          |
| Qty.       | 1 pc(s).                   |                          |

**Slotted screwdriver**

Slotted screwdriver with rounded blade SD DIN 5265, ISO 2380/2, output to DIN 5264, ISO 2380/1. ChromTop tip, SoftFinish grip

**General ordering data**

|            |                            |                          |
|------------|----------------------------|--------------------------|
| Type       | SDS 0.8X4.5X125            | Version                  |
| Order No.  | <a href="#">9009020000</a> | Screwdriver, Screwdriver |
| GTIN (EAN) | 4032248266883              |                          |
| Qty.       | 1 pc(s).                   |                          |

## BUZ 10.16HP/07/180 AG BK BX

Weidmüller Interface GmbH &amp; Co. KG

Klingenbergstraße 26

D-32758 Detmold

Germany

www.weidmueller.com

## Accessories

## Coding elements



**The pluggable connections for power electronics - optimised for modern drive technologies, e.g. motor starters, frequency converters and servo-controllers.**

OMNIMATE Power sets the new standard – with increased safety and innovative solutions such as the pluggable shield, integrated signal contacts and one-handed operation.

The three product lines offer you further advantages:

- Application-oriented scalability: from the compact 4 mm<sup>2</sup> connector for 29 A (IEC) or 20 A (UL) up to the sturdy 16 mm<sup>2</sup> connector for 76 A (IEC) or 54 A (UL)
- Unlimited usage up to 1,000 V (IEC) or 600 V (UL)
- A variety of application optimised mounting options

Our Service:

Design your individual connectors simply by using the

## General ordering data

| Type       | KO BU/SU 10.16HP WT        | Version   | Product data | Packaging |
|------------|----------------------------|---|--------------|-----------|
| Order No.  | <a href="#">2592600000</a> | PCB plug-in connector, Accessories, Coding element, Natural, Number |              | Box       |
| GTIN (EAN) | 4050118717389              | of poles: 1   |              |           |
| Qty.       | 50 pc(s).                  |   |              |           |
| Type       | KO BU/SU 10.16HP BK        | Version   | Product data | Packaging |
| Order No.  | <a href="#">1824410000</a> | PCB plug-in connector, Accessories, Coding element, black, Number   |              | Box       |
| GTIN (EAN) | 4032248326716              | of poles: 1   |              |           |
| Qty.       | 50 pc(s).                  |   |              |           |