

**HDC 32A SDBO 1M25G****Weidmüller Interface GmbH & Co. KG**

Klingenbergstraße 26

D-32758 Detmold

Germany

[www.weidmueller.com](http://www.weidmueller.com)

The special die-cast alloy and the multi-layered surface sealing provide complete protection for the HDC housings.

The cleverly designed interlock system is manufactured from stainless steel. This guarantees a long lifespan with high resistance to corrosion and impact.

The housing interlock system provides integrated safety. Our unique, patented spring system provides the housing interlock with a secure grip and prevents accidental opening.

The laser marking allows for easy and quick identification. Each housing is permanently labelled with a laser marking so that each product can be quickly designated and positioned.

Weidmüller RockStar® IP 65 / NEMA Type 4X housings - your first choice for industrial housings with IP 65 protection.

**General ordering data**

Version	HDC enclosures, Size: 7, Protection degree: IP65 (in plugged condition), Base housing, Side-locking clamp on upper side, Standard, with cover, Size of cable entries: M 25
Order No.	<a href="#">1903900000</a>
Type	HDC 32A SDBO 1M25G
GTIN (EAN)	4032248586127
Qty.	1 pc(s).

## HDC 32A SDBO 1M25G

Weidmüller Interface GmbH &amp; Co. KG

Klingenbergstraße 26

D-32758 Detmold

Germany

www.weidmueller.com

## Technical data

## Dimensions and weights

Height	97 mm	Height (inches)	3.819 inch
Width	89.2 mm	Width (inches)	3.512 inch
Mounting dimension - height	46 mm	Mounting dimension - width	92 mm
Net weight	488 g		

## Temperatures

Limit temperature	-40 °C ... 125 °C
-------------------	-------------------

## Dimensions

Cable entry	w. thread	Height of base B1	5 mm
Height of housing B	75 mm	Hole pitch length A2	92 mm
Total length housing	82 mm	Width base C1	64.5 mm
Width housing C	56 mm		

## General data

EMC housings	No	Housing main material	diecast aluminium
Material of locking element	Stainless steel, rust-proof	Protection class note	Protection class for this version of cover: IP20
Protection degree	IP65 (in plugged condition)	Surface finish	Powder coating
Tightening torque	1.2 Nm		

## Version

BG	7	Cable entry	w. thread
Clamp version	Side-locking clamp	Colour (RAL)	RAL 7035
Cover	with cover	Design	Standard
Design of cover	with cover	Design of housing	Base housing
Design of locking system	Side-locking clamp on upper side	Internal thread	M 25
Number of cable entry on top	0	Number of cable entry sideways	1
Sealing	NBR	Size	7
Size of cable entries	M 25	Suitable for ModuPlug®	No
Tightening torque	1.2 Nm	Top part/bottom part/lid	lower part
Type	Base housing		

## Classifications

ETIM 6.0	EC000437	ETIM 7.0	EC000437
ETIM 8.0	EC000437	ETIM 9.0	EC000437
ECLASS 9.0	27-44-02-02	ECLASS 9.1	27-44-02-02
ECLASS 10.0	27-44-02-02	ECLASS 11.0	27-44-02-02
ECLASS 12.0	27-44-02-02	ECLASS 13.0	27-44-02-02

Substance	Acetone
Chemical resistance	Conditionally resistant
Substance	Drilling oil
Chemical resistance	Resistant
Substance	Diesel
Chemical resistance	Resistant

Creation date July 25, 2024 12:38:56 AM CEST

## HDC 32A SDBO 1M25G

Weidmüller Interface GmbH &amp; Co. KG

Klingenbergstraße 26

D-32758 Detmold

Germany

www.weidmueller.com

## Technical data

Substance	Ethyl alcohol
Chemical resistance	Resistant
Substance	Transmission oil
Chemical resistance	Resistant
Substance	Hydraulic oil
Chemical resistance	Resistant
Substance	Coolant
Chemical resistance	Resistant
Substance	Petroleum benzine
Chemical resistance	Resistant
Substance	Sweat
Chemical resistance	Resistant
Substance	Premium gasoline
Chemical resistance	Conditionally resistant
Substance	Water
Chemical resistance	Resistant
Substance	UV
Chemical resistance	Unstable
Substance	Ozone
Chemical resistance	Unstable

## Environmental Product Compliance

REACH SVHC	Lead 7439-92-1
SCIP	d447edfa-0214-4f34-b5ba-82eae491b46a
Chemical resistance	de.myview.objectmodel.impl.BlockImpl@a1cab72 de.myview.objectmodel.impl.BlockImpl@5cf75adc de.myview.objectmodel.impl.BlockImpl@798d5550 de.myview.objectmodel.impl.BlockImpl@71601ac de.myview.objectmodel.impl.BlockImpl@68be7d07 de.myview.objectmodel.impl.BlockImpl@e79fb76 de.myview.objectmodel.impl.BlockImpl@1d4d083c de.myview.objectmodel.impl.BlockImpl@2ae17158 de.myview.objectmodel.impl.BlockImpl@31ac7746 de.myview.objectmodel.impl.BlockImpl@70cf884e de.myview.objectmodel.impl.BlockImpl@5b66283 de.myview.objectmodel.impl.BlockImpl@247cb8dc de.myview.objectmodel.impl.BlockImpl@76b8fd52
RoHS Compliance Status	Compliant with exemption
RoHS Exemption (if applicable/known)	6bl

## Approvals

Approvals



ROHS	Conform
UL File Number Search	UL Website
Certificate No. (cURus)	E92202

Creation date July 25, 2024 12:38:56 AM CEST

Catalogue status 13.07.2024 / We reserve the right to make technical changes.

## HDC 32A SDBO 1M25G

**Weidmüller Interface GmbH & Co. KG**

Klingenbergstraße 26

D-32758 Detmold

Germany

[www.weidmueller.com](http://www.weidmueller.com)

## Technical data

### Downloads

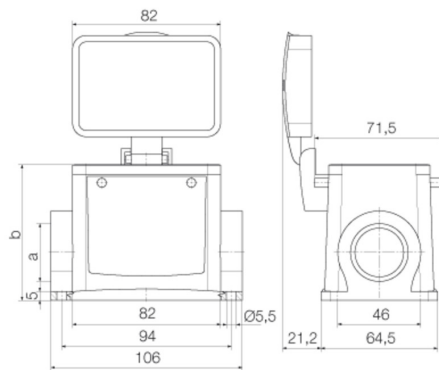
Engineering Data	<a href="#">CAD data – STEP</a>
Product Change Notification	<a href="#">20220214 Technical change to HDC housings</a> <a href="#">20220214 Technische Änderung bei HDC-Gehäusen</a>
Catalogues	<a href="#">Catalogues in PDF-format</a>
Brochures	<a href="#">FL FIELDWIRING EN</a> <a href="#">FL FIELDWIRING EN</a>

## HDC 32A SDBO 1M25G

**Weidmüller Interface GmbH & Co. KG**  
Klingenbergstraße 26  
D-32758 Detmold  
Germany

[www.weidmueller.com](http://www.weidmueller.com)

## Drawings



## HDC 32A SDBO 1M25G

**Weidmüller Interface GmbH & Co. KG**  
 Klingenbergstraße 26  
 D-32758 Detmold  
 Germany

www.weidmueller.com

## Accessories

## Hood, Cable Entry sideways



The special die-cast alloy and the multi-layered surface sealing provide complete protection for the HDC housings.

The cleverly designed interlock system is manufactured from stainless steel. This guarantees a long lifespan with high resistance to corrosion and impact.

The housing interlock system provides integrated safety. Our unique, patented spring system provides the housing interlock with a secure grip and prevents accidental opening.

The laser marking allows for easy and quick identification. Each housing is permanently labelled with a laser marking so that each product can be quickly designated and positioned.

Weidmüller RockStar® IP 65 / NEMA Type 4X housings - your first choice for industrial housings with IP 65 protection.

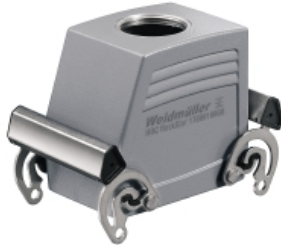
## General ordering data

Type	HDC 32A TSBO 1M32G	Version
Order No.	<a href="#">1787970000</a>	HDC enclosures, Size: 7, Protection degree: IP65 (in plugged condition), Cable entry from side, Plug housing, Side-locking clamp on upper side, Standard, Size of cable entries: M 32
GTIN (EAN)	4032248205417	
Qty.	1 pc(s).	
Type	HDC 32A TSBO 1M25G	Version
Order No.	<a href="#">1787980000</a>	HDC enclosures, Size: 7, Protection degree: IP65 (in plugged condition), Cable entry from side, Plug housing, Side-locking clamp on upper side, Standard, Size of cable entries: M 25
GTIN (EAN)	4032248205424	
Qty.	1 pc(s).	
Type	HDC 32A TSBO 1PG29G	Version
Order No.	<a href="#">1666270000</a>	HDC enclosures, Size: 7, Protection degree: IP65 (in plugged condition), Cable entry from side, Plug housing, Side-locking clamp on upper side, Standard, Size of cable entries: PG 29
GTIN (EAN)	4008190423315	
Qty.	1 pc(s).	

**HDC 32A SDBO 1M25G**

**Weidmüller Interface GmbH & Co. KG**  
Klingenbergstraße 26  
D-32758 Detmold  
Germany

[www.weidmueller.com](http://www.weidmueller.com)

**Accessories****Hood, Cable Entry at top**

The special die-cast alloy and the multi-layered surface sealing provide complete protection for the HDC housings.

The cleverly designed interlock system is manufactured from stainless steel. This guarantees a long lifespan with high resistance to corrosion and impact.

The housing interlock system provides integrated safety. Our unique, patented spring system provides the housing interlock with a secure grip and prevents accidental opening.

The laser marking allows for easy and quick identification. Each housing is permanently labelled with a laser marking so that each product can be quickly designated and positioned.

Weidmüller RockStar® IP 65 / NEMA Type 4X housings - your first choice for industrial housings with IP 65 protection.

**General ordering data**

Type	HDC 32A TOBO 1M32G	Version
Order No.	<a href="#">1788010000</a>	HDC enclosures, Size: 7, Protection degree: IP65 (in plugged condition), Cable entry from top, Plug housing, Side-locking clamp on upper side, Standard, Size of cable entries: M 32
GTIN (EAN)	4032248205455	
Qty.	1 pc(s).	