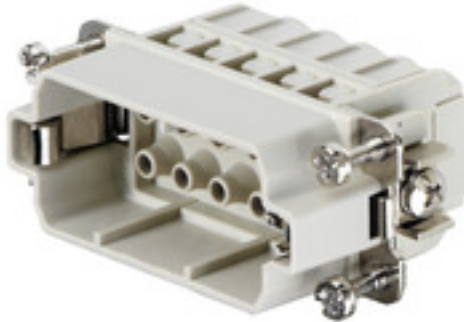


HDC HA 10 MC**Weidmüller Interface GmbH & Co. KG**

Klingenbergstraße 26

D-32758 Detmold

Germany

www.weidmueller.com

The small and thin HA series can be used wherever space is limited.

The wire connection level is designed as a crimp contact. The established crimp connection has been used as a standard for decades.

Crimp contacts are not delivered with the inserts.

Pole count: 10

Rated current: 22 A

Rated voltage 250 V

Nominal voltage acc. to UL/CSA: 600 V AC/DC

Crimp connection

General ordering data

| | |
|------------|---|
| Version | HDC insert, Male, 250 V, 16 A, Number of poles: 10, Crimp connection, Size: 2 |
| Order No. | 1873870000 |
| Type | HDC HA 10 MC |
| GTIN (EAN) | 4032248458387 |
| Qty. | 1 pc(s). |

HDC HA 10 MC

Weidmüller Interface GmbH & Co. KG

Klingenbergstraße 26

D-32758 Detmold

Germany

www.weidmueller.com

Technical data

Dimensions and weights

| | | | |
|------------|---------|-----------------|------------|
| Depth | 56.6 mm | Depth (inches) | 2.228 inch |
| Height | 29 mm | Height (inches) | 1.142 inch |
| Width | 23 mm | Width (inches) | 0.906 inch |
| Net weight | 28 g | | |

Temperatures

| | |
|-------------------|-------------------|
| Limit temperature | -40 °C ... 125 °C |
|-------------------|-------------------|

Dimensions

| | | | |
|----------------|-------|-------------------|---------|
| Height of plug | 29 mm | Total length base | 56.6 mm |
| Width | 23 mm | | |

General data

| | | |
|--------------------------------------|---|--------|
| BG | 2 | |
| Colour | beige | |
| Conductor cross-section | 2.5 mm² | |
| Free from halogens | true | |
| Insulating material | PC glass-fibre reinforced (UL-listed and railway-certified) | |
| Insulating material group | IIIa | |
| Insulation strength | 10 ¹⁰ Ω | |
| Low smoke acc. DIN EN 45545-2 | Yes | |
| Material | Copper alloy | |
| Number of poles | 10 | |
| Plugging cycles, gold | ≥ 500 | |
| Plugging cycles, silver | ≥ 500 | |
| Pollution severity | 3 | |
| Rated current (DIN EN 61984) | 16 A | |
| Rated current (UR) | Wire connection cross section AWG | AWG 12 |
| | Rated current | 20 A |
| | Wire connection cross section AWG | AWG 14 |
| | Rated current | 15 A |
| | Wire connection cross section AWG | AWG 16 |
| | Rated current | 10 A |
| | Wire connection cross section AWG | AWG 18 |
| | Rated current | 7 A |
| | Wire connection cross section AWG | AWG 20 |
| Rated current (cUR) | Rated current | 5 A |
| | Wire connection cross section AWG | AWG 12 |
| | Rated current | 19 A |
| | Wire connection cross section AWG | AWG 14 |
| | Rated current | 15 A |
| | Wire connection cross section AWG | AWG 16 |
| | Rated current | 12 A |
| | Wire connection cross section AWG | AWG 18 |
| | Rated current | 8 A |
| Rated impulse voltage (DIN EN 61984) | Wire connection cross section AWG | AWG 20 |
| | Rated current | 8 A |
| | Rated current | 8 A |
| Rated impulse voltage (DIN EN 61984) | 4 kV | |
| Rated voltage (DIN EN 61984) | 250 V | |
| Rated voltage according to UL/CSA | 600 V AC/DC | |
| Series | HA | |

Creation date August 27, 2024 4:43:24 PM CEST

HDC HA 10 MC

Weidmüller Interface GmbH & Co. KG

Klingenbergstraße 26

D-32758 Detmold

Germany

www.weidmueller.com

Technical data

| | |
|---------------------------|------------------|
| Size | 2 |
| Type | Male |
| Type of connection | Crimp connection |
| UL 94 flammability rating | V-0 |
| Volume resistance | ≤2 mΩ |

Connection data PE

| | | | |
|---------------------------------------|--------------|---------------------------------------|------------------------------------|
| Blade size, slotted (PE connection) | SD 0.8 x 4.0 | Connection type PE | Screw connection, Crimp connection |
| Fixing screw | M 4 | Rated cross-section | 2.5 mm ² |
| Stripping length PE connection | 10 mm | Tightening torque, max. PE connection | 1.5 Nm |
| Tightening torque, min. PE connection | 1.2 Nm | Wire cross section, AWG (PE), max. | AWG 14 |
| Wire cross section, AWG (PE), min. | AWG 20 | | |

Version

| | | | |
|---|---------------------|---|---------------------|
| BG | 2 | Conductor cross-section, max. | 4 mm ² |
| Conductor cross-section, min. | 0.5 mm ² | Material | Copper alloy |
| Size | 2 | Stripping length, rated connection | 8 mm |
| Type of connection | Crimp connection | Volume resistance | ≤2 mΩ |
| Wire connection cross section AWG, max. | AWG 12 | Wire connection cross section AWG, min. | AWG 20 |
| Wire connection cross section, finely stranded, max. | 2.5 mm ² | Wire connection cross section, finely stranded, min. | 0.5 mm ² |
| Wire connection cross-section, finely stranded with wire-end ferrules DIN 46228/4, max. | 2.5 mm ² | Wire connection cross-section, finely stranded with wire-end ferrules DIN 46228/4, min. | 0.5 mm ² |
| Wire cross-section, solid, max. | 2.5 mm ² | Wire cross-section, solid, min. | 0.5 mm ² |

Classifications

| | | | |
|-------------|-------------|-------------|-------------|
| ETIM 6.0 | EC000438 | ETIM 7.0 | EC000438 |
| ETIM 8.0 | EC000438 | ETIM 9.0 | EC000438 |
| ECLASS 9.0 | 27-44-02-05 | ECLASS 9.1 | 27-44-02-05 |
| ECLASS 10.0 | 27-44-02-05 | ECLASS 11.0 | 27-44-02-05 |
| ECLASS 12.0 | 27-44-02-05 | ECLASS 13.0 | 27-44-02-05 |
| ECLASS 14.0 | 27-44-02-05 | | |

| | |
|---------------------|---------------------------|
| Substance | Acetone |
| Chemical resistance | Resistant |
| Substance | Ammonia, watery |
| Chemical resistance | Conditionally resistant |
| Substance | Petrol |
| Chemical resistance | Resistant |
| Substance | Benzene |
| Chemical resistance | Resistant |
| Substance | Diesel oil |
| Chemical resistance | Conditionally resistant |
| Substance | Acetic acid, concentrated |
| Chemical resistance | Resistant |
| Substance | Potassium hydroxide |

Creation date August 27, 2024 4:43:24 PM CEST

HDC HA 10 MC

Weidmüller Interface GmbH & Co. KG

Klingenbergstraße 26

D-32758 Detmold

Germany

www.weidmueller.com

Technical data

| | |
|---------------------|--------------------------|
| Chemical resistance | Conditionally resistant |
| Substance | Methanol |
| Chemical resistance | Conditionally resistant |
| Substance | Motor oil |
| Chemical resistance | Conditionally resistant |
| Substance | Lye, diluted |
| Chemical resistance | Resistant |
| Substance | Hydrochlorofluorocarbons |
| Chemical resistance | Conditionally resistant |
| Substance | Outdoor use |
| Chemical resistance | Conditionally resistant |

Environmental Product Compliance

| | |
|--------------------------------------|---|
| REACH SVHC | Lead 7439-92-1 Potassium perfluorobutane sulfonate 29420-49-3 |
| SCIP | b67daa31-7dca-434d-8290-da7fb52f83a2 |
| Chemical resistance | de.myview.objectmodel.impl.BlockImpl@24b3a19 de.myview.objectmodel.impl.BlockImpl@4d33b9e6 de.myview.objectmodel.impl.BlockImpl@734eb3e2 de.myview.objectmodel.impl.BlockImpl@426a2696 de.myview.objectmodel.impl.BlockImpl@192a4730 de.myview.objectmodel.impl.BlockImpl@4986217a de.myview.objectmodel.impl.BlockImpl@4fd14a0b de.myview.objectmodel.impl.BlockImpl@5c9c8bf1 de.myview.objectmodel.impl.BlockImpl@17445495 de.myview.objectmodel.impl.BlockImpl@6f313af6 de.myview.objectmodel.impl.BlockImpl@2a75a409 de.myview.objectmodel.impl.BlockImpl@120e71b5 |
| RoHS Compliance Status | Compliant with exemption |
| RoHS Exemption (if applicable/known) | 6c |

Approvals

Approvals



| | |
|-------------------------|------------|
| ROHS | Conform |
| UL File Number Search | UL Website |
| Certificate No. (cURus) | E92202 |

Downloads

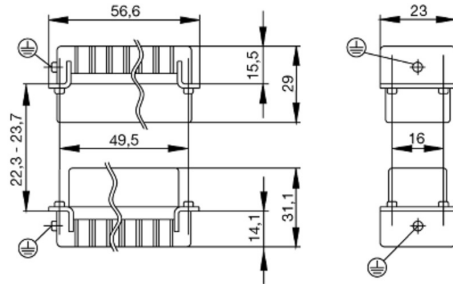
| | |
|-------------------------|--|
| Engineering Data | CAD data – STEP |
| Technical Documentation | 1873870000 HDC HA 10 MC STP Blatt 1.pdf |
| Catalogues | Catalogues in PDF-format |
| Brochures | FL FIELDWIRING EN FL FIELDWIRING EN |

HDC HA 10 MC

Weidmüller Interface GmbH & Co. KG
Klingenbergstraße 26
D-32758 Detmold
Germany

www.weidmueller.com

Drawings



HDC HA 10 MC

Weidmüller Interface GmbH & Co. KG

Klingenbergstraße 26

D-32758 Detmold

Germany

www.weidmueller.com

Accessories

Crimping tools



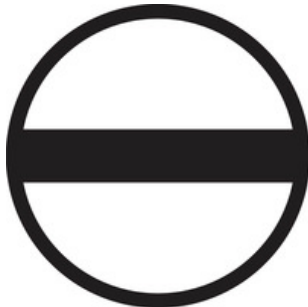
Crimping tools for turned contacts

- Ratchet guarantees precise crimping
- Release option in the event of incorrect operation
- With stop for exact positioning of the contacts.

General ordering data

| | | |
|------------|----------------------------|--|
| Type | CTX CM 1.6/2.5 | Version |
| Order No. | 9018490000 | Pressing tool, Crimping tool for contacts, 0.14mm ² , 4mm ² , W crimp |
| GTIN (EAN) | 4008190884598 | |
| Qty. | 1 pc(s). | |
| Type | CTIN CM 1.6/2.5 | Version |
| Order No. | 9205430000 | Pressing tool, Crimping tool for contacts, 0.14mm ² , 6mm ² , 4-indent |
| GTIN (EAN) | 4032248733446 | crimp |
| Qty. | 1 pc(s). | |

Slotted screwdriver



Slotted screwdriver with rounded blade SD DIN 5265, ISO 2380/2, output to DIN 5264, ISO 2380/1. ChromTop tip, SoftFinish grip

General ordering data

| | | |
|------------|----------------------------|--------------------------|
| Type | SDS 0.6X3.5X100 | Version |
| Order No. | 9008330000 | Screwdriver, Screwdriver |
| GTIN (EAN) | 4032248056286 | |
| Qty. | 1 pc(s). | |
| Type | SDS 0.8X4.0X100 | Version |
| Order No. | 9008340000 | Screwdriver, Screwdriver |
| GTIN (EAN) | 4032248056293 | |
| Qty. | 1 pc(s). | |

HDC HA 10 MC

Weidmüller Interface GmbH & Co. KG

Klingenbergstraße 26

D-32758 Detmold

Germany

www.weidmueller.com

Accessories

Crosshead screwdriver Phillips

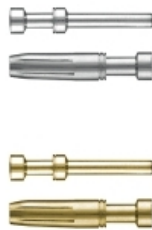


Crosshead screwdriver, Phillips, SDK PH DIN 5262, ISO 8764/2-PH, output to ISO 8764-PH, ChromTop tip, SoftFinish grip

General ordering data

| | | |
|------------|----------------------------|--------------------------|
| Type | SDK PH1 | Version |
| Order No. | 9008480000 | Screwdriver, Screwdriver |
| GTIN (EAN) | 4032248056477 | |
| Qty. | 1 pc(s). | |

Crimp contacts HE



Crimps provide a electrical and mechanical connection between wire and contact that is both secure and reliable. The optimal crimp connection is gas-tight and corrosion-resistant.

General ordering data

| | | |
|------------|----------------------------|---|
| Type | HDC-C-HE-SM0.5AG | Version |
| Order No. | 1200500000 | Heavy-duty connectors, Crimp contact, HE, HEE, HQ, MixMate, Male, |
| GTIN (EAN) | 4008190159627 | Conductor cross-section, max.: 0.5, turned, Copper alloy |
| Qty. | 100 pc(s). | |
| Type | HDC-C-HE-SM4.0AU | Version |
| Order No. | 1651460000 | Heavy-duty connectors, Crimp contact, HE, HEE, HQ, MixMate, Male, |
| GTIN (EAN) | 4008190400132 | Conductor cross-section, max.: 4, turned, Copper alloy |
| Qty. | 100 pc(s). | |
| Type | HDC-C-HE-SM2.5AU | Version |
| Order No. | 1651450000 | Heavy-duty connectors, Crimp contact, HE, HEE, HQ, MixMate, Male, |
| GTIN (EAN) | 4008190400125 | Conductor cross-section, max.: 2.5, turned, Copper alloy |
| Qty. | 100 pc(s). | |
| Type | HDC-C-HE-SM0.75-1.00AG | Version |
| Order No. | 1200600000 | Heavy-duty connectors, Crimp contact, HE, HEE, HQ, MixMate, Male, |
| GTIN (EAN) | 4008190171308 | Conductor cross-section, max.: 1, turned, Copper alloy |
| Qty. | 100 pc(s). | |
| Type | HDC-C-HE-SM1.5AG | Version |
| Order No. | 1200700000 | Heavy-duty connectors, Crimp contact, HE, HEE, HQ, MixMate, Male, |
| GTIN (EAN) | 4008190074920 | Conductor cross-section, max.: 1.5, turned, Copper alloy |
| Qty. | 100 pc(s). | |

HDC HA 10 MC

Weidmüller Interface GmbH & Co. KG

Klingenbergstraße 26

D-32758 Detmold

Germany

www.weidmueller.com

Accessories

| | | |
|------------|----------------------------|---|
| Type | HDC-C-HE-SM2.5AG | Version |
| Order No. | 1200800000 | Heavy-duty connectors, Crimp contact, HE, HEE, HQ, MixMate, Male, |
| GTIN (EAN) | 4008190131913 | Conductor cross-section, max.: 2.5, turned, Copper alloy |
| Qty. | 100 pc(s). | |
| Type | HDC-C-HE-SM4.0AG | Version |
| Order No. | 1200900000 | Heavy-duty connectors, Crimp contact, HE, HEE, HQ, MixMate, Male, |
| GTIN (EAN) | 4008190115906 | Conductor cross-section, max.: 4, turned, Copper alloy |
| Qty. | 100 pc(s). | |
| Type | HDC-C-HE-SM0.75-1.00AU | Version |
| Order No. | 1651430000 | Heavy-duty connectors, Crimp contact, HE, HEE, HQ, MixMate, Male, |
| GTIN (EAN) | 4008190400101 | Conductor cross-section, max.: 1, turned, Copper alloy |
| Qty. | 100 pc(s). | |
| Type | HDC-C-HE-SM4.65AU | Version |
| Order No. | 1116540000 | Heavy-duty connectors, Crimp contact, HE, HEE, HQ, MixMate, Male, |
| GTIN (EAN) | 4032248897261 | Conductor cross-section, max.: 4.65, turned, Copper alloy |
| Qty. | 100 pc(s). | |
| Type | HDC-C-HE-SM0.5AU | Version |
| Order No. | 1651420000 | Heavy-duty connectors, Crimp contact, HE, HEE, HQ, MixMate, Male, |
| GTIN (EAN) | 4008190400095 | Conductor cross-section, max.: 0.5, turned, Copper alloy |
| Qty. | 100 pc(s). | |
| Type | HDC-C-HE-SM1.5AU | Version |
| Order No. | 1651440000 | Heavy-duty connectors, Crimp contact, HE, HEE, HQ, MixMate, Male, |
| GTIN (EAN) | 4008190400118 | Conductor cross-section, max.: 1.5, turned, Copper alloy |
| Qty. | 100 pc(s). | |

HE

Various accessories are available for our inserts. This includes coding elements for the inserts.



General ordering data

| | | |
|------------|----------------------------|---|
| Type | HDC HE CP | Version |
| Order No. | 1003240000 | Heavy-duty connectors, Accessories, Coding System |
| GTIN (EAN) | 4032248698233 | |
| Qty. | 100 pc(s). | |

HDC HA 10 MC**Weidmüller Interface GmbH & Co. KG**

Klingenbergstraße 26

D-32758 Detmold

Germany

www.weidmueller.com**Accessories****Slotted screwdriver**

VDE insulated slot-head screwdriver, SDI DIN 7437, ISO 2380/2, drive output acc. to DIN 5264, ISO 2380/1. SoftFinish grip

General ordering data

| | | |
|------------|----------------------------|--------------------------|
| Type | SDIS 0.6X3.5X100 | Version |
| Order No. | 9008390000 | Screwdriver, Screwdriver |
| GTIN (EAN) | 4032248056354 | |
| Qty. | 1 pc(s). | |
| Type | SDIS 0.8X4.0X100 | Version |
| Order No. | 9008400000 | Screwdriver, Screwdriver |
| GTIN (EAN) | 4032248056361 | |
| Qty. | 1 pc(s). | |

DSTV

Various accessories are available for our inserts. This includes coding elements for the inserts.

General ordering data

| | | |
|------------|----------------------------|--|
| Type | DSTV COBU5 | Version |
| Order No. | 1471500000 | Heavy-duty connectors, Accessories, Coding element |
| GTIN (EAN) | 4008190178543 | |
| Qty. | 100 pc(s). | |
| Type | DSTV COST4 | Version |
| Order No. | 1471300000 | Heavy-duty connectors, Accessories, Coding System |
| GTIN (EAN) | 4008190017354 | |
| Qty. | 100 pc(s). | |

HDC HA 10 MC**Weidmüller Interface GmbH & Co. KG**

Klingenbergstraße 26

D-32758 Detmold

Germany

www.weidmueller.com**Accessories****Crosshead screwdriver Phillips**

VDE insulated crosshead screwdriver, for Phillips screws, SDIK PH DIN 7438, ISO 8764/2-PH, output to ISO 8764-PH, SoftFinish grip

General ordering data

| | | |
|------------|----------------------------|--------------------------|
| Type | SDIK PH1 | Version |
| Order No. | 9008570000 | Screwdriver, Screwdriver |
| GTIN (EAN) | 4032248056569 | |
| Qty. | 1 pc(s). | |

Contact removal tools

Weidmüller offers a variety of crimping tools, contact removal tools, and fibre optic tools.

General ordering data

| | | |
|------------|----------------------------|-----------------------------|
| Type | REMOVAL TOOL HE | Version |
| Order No. | 1866750000 | Tools, Contact Removal Tool |
| GTIN (EAN) | 4032248437078 | |
| Qty. | 1 pc(s). | |

Tightening torques and screwing tools

| Screw size | Connector type | Dia. tightening torque in Nm | Recommended blade inserts and AF size for hexagon socket |
|--------------------|---|---|--|
| M 2.5 | Signal contacts | | |
| | S 6/6 | 0.5 - 0.55 | SD 0.6 x 3.5 mm or PZ0 |
| | S 6/12 | 0.5 - 0.55 | SD 0.6 x 3.5 mm or PZ0 |
| M 2.9 x 0.5 | Fastening screws | | |
| | HQ 4/2 | 0.8 (plastic) / 1.1 (metal) | SD 0.6 x 3.5 mm or PH0 |
| | HQ 8 | 0.8 (plastic) / 1.1 (metal) | SD 0.6 x 3.5 mm or PH0 |
| | HQ 17 | 0.8 (plastic) / 1.1 (metal) | SD 0.6 x 3.5 mm or PH0 |
| M 3 | Contact screws | | |
| | HA 3 | 0.5 - 0.55 | SD 0.5 x 3.0 mm |
| | HA 4 | 0.5 - 0.55 | SD 0.5 x 3.0 mm |
| | HA 10 bis HA 48 | 0.5 - 0.55 | SD 0.6 x 3.5 mm or PH0 |
| | HE | 0.5 - 0.55 | SD 0.6 x 3.5 mm or PZ0 |
| | HVE | 0.5 - 0.55 | SD 0.6 x 3.5 mm or PZ0 |
| | Signal contacts: | | |
| | S 4/2 | 0.5 - 0.55 | SD 0.6 x 3.5 mm or PZ0 |
| | S 4/8 | 0.5 - 0.55 | SD 0.6 x 3.5 mm or PZ0 |
| | PE connection via female contact | | |
| | S 4 | 0.5 - 0.8 | SD 0.6 x 3.5 mm |
| | ConCept modular frame, metal | 0.5 - 0.55 | SD 0.6 x 3.5 mm |
| | PE terminal | | |
| | HQ 5 | 0.5 - 0.55 | SD 0.6 x 3.5 or 0.8 x 4 mm |
| | HQ 7 | 0.5 - 0.55 | SD 0.6 x 3.5 or 0.8 x 4 mm |
| | Fastening screws | 0.5 - 0.55 | SD 0.6 x 3.5 mm or PZ0 |
| | Guide pin | 0.5 - 0.55 | SD 0.6 x 3.5 mm or PZ0 |
| | Guide bush | 0.5 - 0.55 | SD 0.6 x 3.5 mm or PZ0 |
| | Coding pins | 0.5 - 0.55 | SD 0.6 x 3.5 mm or PZ0 |
| M 4 | Contact screws | | |
| | HSB | 1.2 - 1.5 | SD 0.6 x 3.5 or 0.8 x 4 mm or PZ1 |
| | PE connection via male contact | | |
| | S 4 | 0.5 - 0.8 | SD 0.6 x 3.5 mm |
| | ConCept modular frame, metal | 1.2 - 1.5 | SD 0.6 x 3.5 mm |
| | PE terminal | | |
| | HA | 1.2 - 1.5 | SD 0.6 x 3.5 or 0.8 x 4 mm or PH1 |
| | HE | 1.2 - 1.5 | SD 0.6 x 3.5 or 0.8 x 4 mm or PH1 |
| | HEE | 1.2 - 1.5 | SD 0.6 x 3.5 or 0.8 x 4 mm or PH1 |
| | HVE | 1.2 - 1.5 | SD 0.6 x 3.5 or 0.8 x 4 mm or PH1 |
| | HD | 1.2 - 1.5 | SD 0.6 x 3.5 or 0.8 x 4 mm or PZ1 |
| | HDD | 1.2 - 1.5 | SD 0.6 x 3.5 or 0.8 x 4 mm or PZ1 |
| | S 6/6 (for signal contacts) | 1.2 - 1.5 | 0.8 x 4 mm or PZ1 |
| | ConCept modular frame, plastic | 1.2 - 1.5 | 0.8 x 4 mm or PZ1 |
| M 5 | PE terminal | | |
| | HSB | 2 - 2.5 | SD 1 x 5.5 mm or PZ2 |
| | S 4/0 (Screw connection) | 2 - 2.5 | SD 1.2 x 6.5 mm or PH2 |
| | S 4/0 (Axial screw connection) | 2 - 2.5 | SD 0.8 x 4 mm or PZ 2 |
| | S 4/2 | 2 - 2.5 | SD 1.2 x 6.5 mm or PH2 |
| | S 4/8 | 2 - 2.5 | SD 1.2 x 6.5 mm or PH2 |
| | S 6/12 | 2 - 2.5 | SD 0.8 x 4 mm or PZ 2 |
| | S 6/36 | 2 - 2.5 | SD 1.2 x 6.5 mm or PH2 |
| | S 8/24 | 2 - 2.5 | SD 1.2 x 6.5 mm or PH2 |
| | S 12/2 | 2 - 2.5 | SD 1.2 x 6.5 mm or PH2 |
| M 6 | Power contacts | | |
| | S 4/0 (Screw connection) | 1.2 (1.5 mm ²) / 2 (2.5 mm ²) / 3 (4-16 mm ²) | SD 0.8 x 4 mm |
| | S 4/2 | 1.2 (1.5 mm ²) / 2 (2.5 mm ²) / 3 (4-16 mm ²) | SD 0.8 x 4 mm |
| | S 4/8 | 1.2 (1.5 mm ²) / 2 (2.5 mm ²) / 3 (4-16 mm ²) | SD 0.8 x 4 mm |
| M 7 x 0.75 | Power contacts | | |
| | S 4 | 1.1 - 1.7 | SW 2 |
| | S 6/6 (+ PE) | 6 - 8 | SW 4 |
| M 8 x 0.75 | Power contacts | | |
| | S 6/12 | 1.1 - 1.7 | SW 2 |
| | S 8/0 (+ PE) | 6 (10-16 mm ²) - 7 (25 mm ²) | SW 4 |
| M10 x 1 | Power contacts | | |
| | S 4/0 (Axial connection) | 2 - 3 | SW 3 |

Increasing the tightening torque does not improve the contact resistance. The stated torque settings offer optimal mechanical, thermal and electrical conditions. Exceeding the recommended values may even damage the conductor and terminal.