

SAIL-M12GM12G-PB-7.0D**Weidmüller Interface GmbH & Co. KG**

Klingenbergstraße 26

D-32758 Detmold

Germany

www.weidmueller.com

The most reliable way of achieving connections between two I/O slaves or between the control and one I/O subscriber is by way of pre-assembled cables. The line of cables covers PROFIBUS, CANopen, DeviceNet™, EtherCAT and Ethernet.

General ordering data

| | |
|------------|--|
| Version | Bus line, Connecting line, M12 / M12, Number of poles: 2, 7 m, pin, straight - socket, straight, Shielded: Yes, LED: No, Sheath material: PUR, Halogen: No |
| Order No. | 1873310700 |
| Type | SAIL-M12GM12G-PB-7.0D |
| GTIN (EAN) | 4032248866281 |
| Qty. | 1 pc(s). |

SAIL-M12GM12G-PB-7.0D**Weidmüller Interface GmbH & Co. KG**

Klingenbergstraße 26

D-32758 Detmold

Germany

www.weidmueller.com

Technical data**Dimensions and weights**

| | |
|------------|-------|
| Net weight | 551 g |
|------------|-------|

Technical specifications for cable

| | | | |
|-----------------------------------|---|--|----------------------|
| Acceleration | 5 m/s ² | Bending cycles | 2 Mio |
| Bending radius, min., moving | 12 x cable diameter | Bending radius, min., stationary | 7.5 x cable diameter |
| Cable length | 7 m | Colour coding | red, green |
| Configurable cable length | No | Core cross-section AWG | AWG 24 |
| Halogen | No | Hybrid cable | No |
| Insulation | TPE | Irradiation crosslinked | No |
| Number of poles | 2 | Outer cladding in accordance with UL AWM style | 20236 (80 °C / 30 V) |
| Outside diameter | 7.8 mm ± 0.2 mm | Resistant to welding beads | No |
| Sheath material | PUR | Sheathing colour | violet |
| Shielded | Yes | Speed | 3 m/s |
| Suitable for cable carriers | Yes | Temperature range, moving | -20...60 °C |
| Temperature range, stationary | -40...70 °C | Welding spark resistance | No |
| Wire cross section (Print/Online) | PUR 0.25 mm ² / PVC 0.34 mm ² | | |

General technical data

| | | | |
|------------------------------|-------------------|------------------------|----------------------------------|
| Coding | B-coded | Connection thread | M12 / M12 |
| Contact material | Ni/Au | Contact surface | Gold-plated |
| Housing main material | PUR | Insulation strength | 10 ⁸ Ω |
| LED | No | Plugging cycles | ≥ 100 |
| Pollution severity | 3 | Protection degree | IP67 |
| Rated current | 4 A | Rated voltage | 250 V |
| Temperature range of housing | -25...+80 °C | Threaded ring material | Brass, nickel-plated |
| Tightening torque | M12: 0.8 - 1.2 Nm | Version | pin, straight - socket, straight |
| jumpered | No | | |

Electrical properties

| | | | |
|---------------------|-------------------|---------------|-------|
| Insulation strength | 10 ⁸ Ω | Rated voltage | 250 V |
|---------------------|-------------------|---------------|-------|

General standards

| | |
|-------------------------|---------|
| Certificate no. (cULus) | E307231 |
|-------------------------|---------|

Plug, left

| | |
|-----------|---|
| Plug left | M12, B-coded, IP67, male contact, straight, Plastic, shielded |
|-----------|---|

Plug, right

| | |
|------------|---|
| Plug right | M12, B-coded, IP67, female contact, straight, Plastic, shielded |
|------------|---|

SAIL-M12GM12G-PB-7.0D**Weidmüller Interface GmbH & Co. KG**

Klingenbergstraße 26

D-32758 Detmold

Germany

www.weidmueller.com**Technical data****Classifications**

| | | | |
|-------------|-------------|-------------|-------------|
| ETIM 6.0 | EC002599 | ETIM 7.0 | EC002599 |
| ETIM 8.0 | EC002599 | ETIM 9.0 | EC002599 |
| ECLASS 9.0 | 27-06-03-08 | ECLASS 9.1 | 27-06-03-08 |
| ECLASS 10.0 | 27-06-03-08 | ECLASS 11.0 | 27-06-03-08 |
| ECLASS 12.0 | 27-06-03-08 | ECLASS 13.0 | 27-06-03-08 |

Environmental Product Compliance

| | |
|------------|--------------------------------------|
| REACH SVHC | Lead 7439-92-1 |
| SCIP | 1c533b66-fcff-4da5-b89f-fd55fbf5cb55 |

Approvals

Approvals



| | |
|-------------------------|------------|
| ROHS | Conform |
| UL File Number Search | UL Website |
| Certificate no. (cULus) | E307231 |

Downloads

| | |
|------------|--|
| Catalogues | Catalogues in PDF-format |
| Brochures | FL FIELDWIRING EN |

SAIL-M12GM12G-PB-7.0D

Weidmüller Interface GmbH & Co. KG
Klingenbergstraße 26
D-32758 Detmold
Germany

www.weidmueller.com

Drawings

Dimensioned drawing



Male, straight

Pole scheme

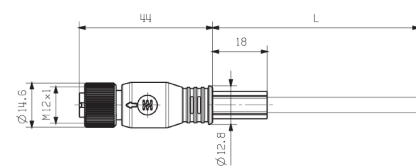


Pin

Wiring diagram



Dimensioned drawing



Straight socket

Pole scheme



Socket

The ideal tool: Screwty® with torque function



Light, securely screwed-in round plug-in connectors. Screwty set DM / VPE: 1 / Order No.: 1920000000 Adapters: M12, M12 F, M8, M8 F