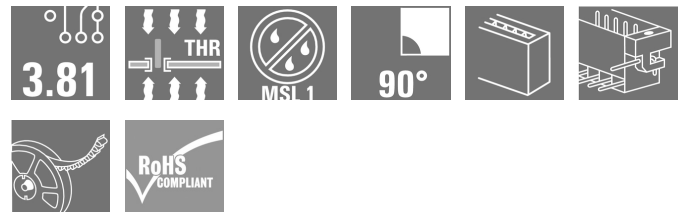
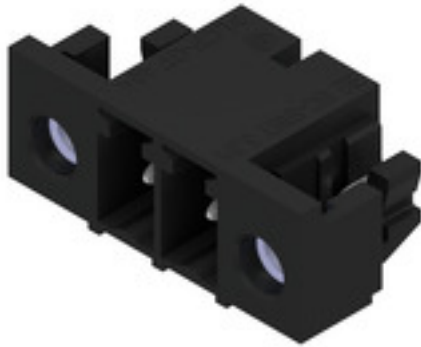


**SC-SMT 3.81/02/90LF 1.5SN BK RL****Weidmüller Interface GmbH & Co. KG**

Klingenbergstraße 26

D-32758 Detmold

Germany

[www.weidmueller.com](http://www.weidmueller.com)**Product image**

High-temperature-resistant pin header (SC-SMT 90LF) in 3.81-mm pitch (0.15 inch)

- Plugging direction parallel to PCB (recumbent)
- With solder flange (LF).
- Packed either in box (BX) or on anti-static roll (tape-on-reel, RL)
- Pin length of either 1.5 mm or 3.2 mm

Weidmüller's 3.81-mm-pitch (0.15 inch) plug-in connectors are compatible with the layouts of standard connectors and offer space for labelling.

**General ordering data**

Version	PCB plug-in connector, male header, Solder flange, THT/THR solder connection, 3.81 mm, Number of poles: 2, 90°, Solder pin length (l): 1.5 mm, tinned, black, Tape
Order No.	<a href="#">1862720000</a>
Type	SC-SMT 3.81/02/90LF 1.5SN BK RL
GTIN (EAN)	4032248427949
Qty.	400 pc(s).
Product data	IEC: 320 V / 17.5 A UL: 300 V / 11 A
Packaging	Tape

Creation date June 1, 2024 11:34:17 AM CEST

## SC-SMT 3.81/02/90LF 1.5SN BK RL

Weidmüller Interface GmbH &amp; Co. KG

Klingenbergstraße 26

D-32758 Detmold

Germany

www.weidmueller.com

## Technical data

## Dimensions and weights

Depth	9.2 mm	Depth (inches)	0.362 inch
Height	8.6 mm	Height (inches)	0.339 inch
Height of lowest version	7.1 mm	Width	17.91 mm
Width (inches)	0.705 inch	Net weight	2.108 g

## System specifications

Product family	OMNIMATE Signal - series BC/SC 3.81	Type of connection	Board connection
Mounting onto the PCB	THT/THR solder connection	Pitch in mm (P)	3.81 mm
Pitch in inches (P)	0.15 "	Outgoing elbow	90°
Number of poles	2	Number of solder pins per pole	1
Solder pin length (l)	1.5 mm	Solder pin length tolerance	0 / -0,02 mm
Solder pin dimensions	d = 1.0 mm, Octagonal	Solder pin dimensions = d tolerance	0 / -0,04 mm
Solder eyelet hole diameter (D)	1.3 mm	Solder eyelet hole diameter tolerance (D)+	0,1 mm
Outside diameter of solder pad	2.1 mm	Template aperture diameter	1.9 mm
L1 in mm	3.81 mm	L1 in inches	0.15 "
Number of rows	1	Pin series quantity	1
Touch-safe protection acc. to DIN VDE 57 106	finger-safe unplugged/ back-of-hand-safe plugged	Touch-safe protection acc. to DIN VDE 0470	IP20 plugged/ IP10 unplugged
Volume resistance	≤5 mΩ	Can be coded	Yes

## Material data

Insulating material	LCP GF	Colour	black
Colour chart (similar)	RAL 9011	Insulating material group	IIIa
Comparative Tracking Index (CTI)	≥ 175	Moisture Level (MSL)	1
UL 94 flammability rating	V-0	Contact material	Cu-alloy
Contact surface	tinned	Storage temperature, min.	-40 °C
Storage temperature, max.	70 °C	Operating temperature, min.	-50 °C
Operating temperature, max.	120 °C	Temperature range, installation, min.	-25 °C
Temperature range, installation, max.	120 °C		

## Rated data acc. to IEC

tested acc. to standard	IEC 60664-1, IEC 61984	Rated current, min. number of poles (Tu=20°C)	17.5 A
Rated current, max. number of poles (Tu=20°C)	13.9 A	Rated current, min. number of poles (Tu=40°C)	17 A
Rated current, max. number of poles (Tu=40°C)	12.4 A	Rated voltage for surge voltage class / pollution degree II/2	320 V
Rated voltage for surge voltage class / pollution degree III/2	160 V	Rated voltage for surge voltage class / pollution degree III/3	160 V
Rated impulse voltage for surge voltage class/ pollution degree II/2	2.5 kV	Rated impulse voltage for surge voltage class/ pollution degree III/2	2.5 kV
Rated impulse voltage for surge voltage class/ contamination degree III/3	2.5 kV	Short-time withstand current resistance	3 x 1s with 76 A

## SC-SMT 3.81/02/90LF 1.5SN BK RL

Weidmüller Interface GmbH &amp; Co. KG

Klingenbergstraße 26

D-32758 Detmold

Germany

www.weidmueller.com

## Technical data

## Rated data acc. to CSA

Institute (CSA)



Certificate No. (CSA)

200039-1121690

Rated voltage (Use group B / CSA) 300 V

Rated current (Use group B / CSA) 11 A

Reference to approval values Specifications are maximum values, details - see approval certificate.

## Rated data acc. to UL 1059

Institute (cURus)



Certificate No. (cURus)

E60693

Rated voltage (Use group B / UL 1059) 300 V

Rated voltage (Use group D / UL 1059) 300 V

Rated current (Use group B / UL 1059) 11 A

Rated current (Use group D / UL 1059) 11 A

Reference to approval values Specifications are maximum values, details - see approval certificate.

## Packing

ESD Level packaging	static dissipative
VPE length	346 mm
VPE height	73 mm
Tape width (W)	32 mm
Tape pocket height (A0)	9.5 mm
Tape pocket separation (P1)	16 mm
Tape pocket separation (F)	14.2 mm
Surface resistance	$R_s = 10^9 - 10^{12} \Omega$

Packaging	Tape
VPE width	332 mm
Tape depth (T2)	11.4 mm
Tape pocket depth (K0)	10.9 mm
Tape pocket width (B0)	18.2 mm
Tape hole separation (E)	1.75 mm
Tape reel diameter $\varnothing$ (A)	330 mm

## Classifications

ETIM 6.0	EC002637	ETIM 7.0	EC002637
ETIM 8.0	EC002637	ETIM 9.0	EC002637
ECLASS 9.0	27-44-04-02	ECLASS 9.1	27-44-04-02
ECLASS 10.0	27-44-04-02	ECLASS 11.0	27-46-02-01
ECLASS 12.0	27-46-02-01	ECLASS 13.0	27-46-02-01

## SC-SMT 3.81/02/90LF 1.5SN BK RL

Weidmüller Interface GmbH &amp; Co. KG

Klingenbergstraße 26

D-32758 Detmold

Germany

www.weidmueller.com

## Technical data

## Important note

IPC conformity	Conformity: The products are developed, manufactured and delivered according international recognized standards and norms and comply with the assured properties in the data sheet resp. fulfill decorative properties in accordance with IPC-A-610 "Class 2". Further claims on the products can be evaluated on request.
Notes	<ul style="list-style-type: none"> <li>• Additional variants on request</li> <li>• Rated current related to rated cross-section &amp; min. No. of poles.</li> <li>• Rated data refer only to the component itself. Clearance and creepage distances to other components are to be designed in accordance with the relevant application standards.</li> <li>• P on drawing = pitch</li> <li>• In accordance with IEC 61984, OMNIMATE-connectors are connectors without breaking capacity (COC). During designated use, connectors are not allowed to be engaged or disengaged when live or under load</li> <li>• Long term storage of the product with average temperature of 50 °C and maximum humidity 70%, 36 months</li> </ul>

## Approvals

Approvals



ROHS	Conform
UL File Number Search	UL Website
Certificate No. (cULus)	E60693

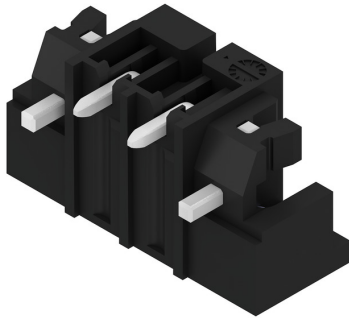
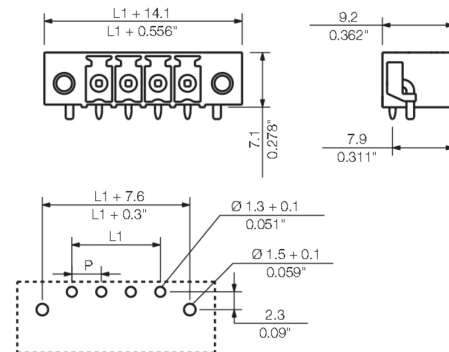
## Downloads

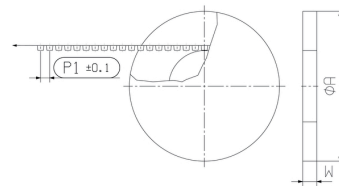
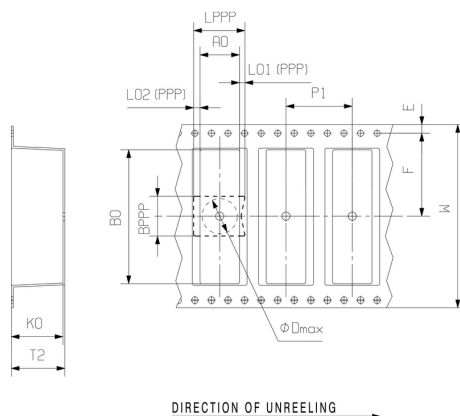
Product Change Notification	<a href="#">PCN 2015 208 PL30X SC-SMT SL SMT 3.xx 5.xx new Tape Packaging Step 1 EN</a> <a href="#">PCN 2015 208 PL30X SC-SMT SL SMT 3.xx 5.xx neue Tapeverpackung Step 1 DE</a> <a href="#">Standardization of M2.5 square nut -DE</a> <a href="#">Standardization of M2.5 square nut -EN</a> <a href="#">Changeover to ESD bags for "Tape on Reel" products</a> <a href="#">Umstellung auf ESD-Beutel bei „Tape on Reel“ Produkten</a>
Catalogues	<a href="#">Catalogues in PDF-format</a>
Brochures	<a href="#">FL DRIVES EN</a> <a href="#">FL DRIVES DE</a>
White paper surface mount technology	<a href="#">Download Whitepaper</a>

**SC-SMT 3.81/02/90LF 1.5SN BK RL**

**Weidmüller Interface GmbH & Co. KG**  
 Klingenbergstraße 26  
 D-32758 Detmold  
 Germany

[www.weidmueller.com](http://www.weidmueller.com)

**Drawings**
**Product image**

**Dimensional drawing**

**Example of use**

**Dimensional drawing**

**Dimensional drawing**


## SC-SMT 3.81/02/90LF 1.5SN BK RL

Weidmüller Interface GmbH & Co. KG  
Klingenbergstraße 26  
D-32758 Detmold  
Germany

[www.weidmueller.com](http://www.weidmueller.com)

## Accessories

## Coding elements

**Only connects what is supposed to be connected: the right connection at the right place.**

Coding elements and locking devices clearly assign connecting elements during the manufacturing process and operation

The coding elements and locking devices are inserted prior to assembly or during the cable assembly phase. The Weidmüller alternative: configure online using the variant configurator to precode prior to delivery.

Incorrect assembly on the circuit board and incorrect plugging of connecting elements is no longer possible. The advantage: no troubleshooting during manufacture and no operational errors by the user.

## General ordering data

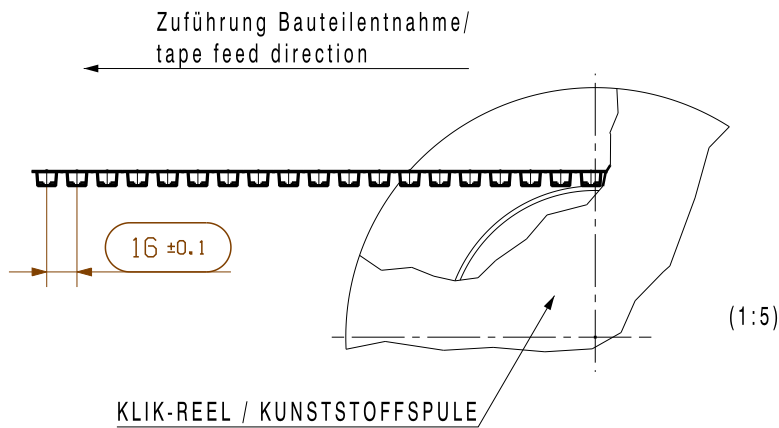
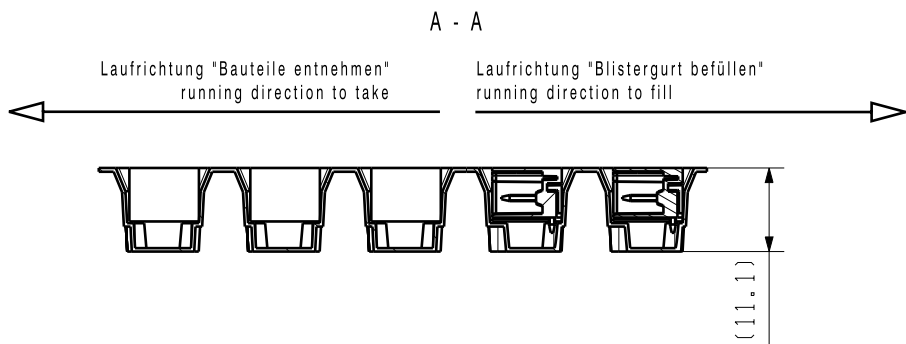
Type	SC-SMT 3.81 KO GY BX	Version	Product data	Packaging
Order No.	<a href="#">1968900000</a>	PCB plug-in connector, Accessories, Coding element, grey, Number of		Box
GTIN (EAN)	4032248772865	poles: 6		
Qty.	100 pc(s).			

The reproduction, distribution and utilization of this document as well as the communication of its contents to others without explicit authorization is prohibited. Offenders will be held liable for the payment of damages. Weidmüller exclusively reserves the right to file for patents, utility models or designs.

© Weidmüller Interface GmbH & Co. KG

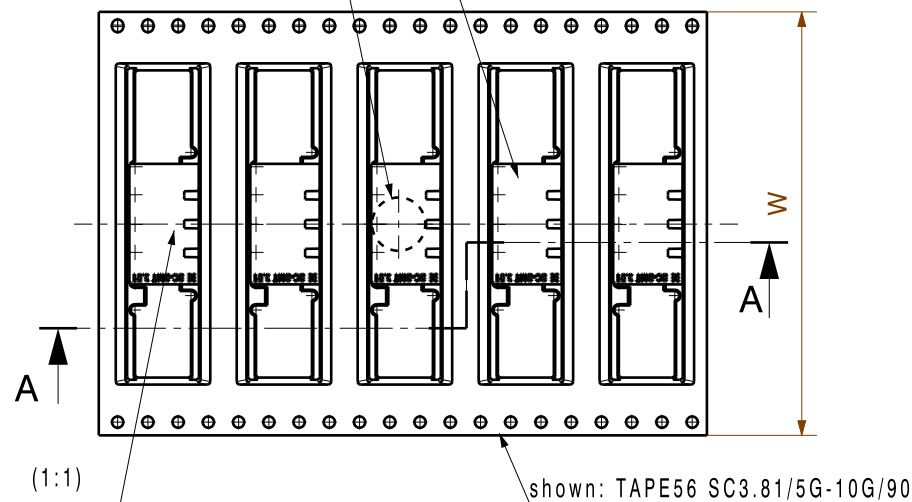
Dimensions without tolerances are no check dimensions

The English version is binding



shown: SC-SMT 3.81/04/180G 1.5 ..

pick and place area max.  $\phi 7$



gerade Polzahl dargestellt/  
even pole number shown

ungerade Polzahl Drehung Stiftheiste um 180°/  
uneven pole number pin header rotated 180°

Stiftheisten müssen mittig im Tape sitzen /  
pin header assembled in the middle

29

Information: F= Lötflanschvariante ohne Lötflanschstift mit Vierkantmutter / solder flange version without solder flange pin but with square nut

Tapebreite/ tape width (Mat.nr.)	no of poles	SC-SMT 3.81/././90.. 1.5SN BK		90.. 2.6SN BK	SC-SMT 3.81/././90.. 3.2SN BK		SC-SMT 3.81/././90.. 2.1SN BK		SC-SMT 3.81/././90.. 1.5SN OR		SC-SMT 3.81/././90.. 1.5AU BK	
		Bestellnr./cat.no.		Bestellnr./ cat.no.	Bestellnr./cat.no.		Bestellnr./cat.no.		Bestellnr./cat.no.		Bestellnr./cat.no.	
W	n	G	LF	F	G	LF	G	LF	G	LF	G	LF
32 (1437290000)	2	1863140000	1862720000	2780690000	1862810000	1863890000	2429820000		1105060000			
	3	1863150000	/	29	1862840000	/	2128630000	/		/		
	4	1863160000	/	/	1862860000	/	2495680000	/		/	2522690000	
44 (2017990000)	3	/	1862750000		/	1863970000	/		/			
	4	/	1862770000		/	1863980000	/		/			
	5	1863170000	1862790000	2780700000	1862870000							
	6	1863180000	1862820000	29	1862880000							
	7	1863190000	/	/		/		/		/		
	8	1863200000	/	/	1862900000	/		/		/		
56 (1348070000)	7	/	1862830000		/		/		/			
	8	/	1862850000		/		/		/			
	9	1863210000	/	/		/		/		/		
	10	1863220000	/	/	1862930000	/		/		/		
88 (1396710000)	9	/	1430360000		/	1430370000	/		/			
	10	/	1430380000		/	1430390000	/		/			
	11	1430230000	1430400000			1430420000						
	12	1430250000	1430430000		1430240000	1359450000						
	13	1430270000	1430440000		1430260000	1430450000						
	14	1430290000	1430470000		1430280000	1430480000						
	15	1430330000	1430490000		1430320000	1430500000						
	16	1430350000	1430510000		1430340000	1430520000						

Tape und Reel gemäß IEC 286-3 (EN 60286-3) /  
tape and reel according to IEC 286-3 (EN 60286-3)

First Issue Date 11.11.2004		Max. nos. Modification		Prim PLM Part No.: 024124		Prim ERP Part No.: 1862980000	
Scale: 1:1		Size: A3		Drawn 12.06.2020		Ma, Junliang	
Drawings Assembly		Approved 13.01.2021		Responsible Amann, Alexand		Lang, Thomas	
				Date 12.06.2020		Name Ma, Junliang	
				Date 13.01.2021		Name Lang, Thomas	
				Date 13.01.2021		Name Lang, Thomas	
				Date 13.01.2021		Name Lang, Thomas	
				Date 13.01.2021		Name Lang, Thomas	
				Date 13.01.2021		Name Lang, Thomas	
				Date 13.01.2021		Name Lang, Thomas	
				Date 13.01.2021		Name Lang, Thomas	
				Date 13.01.2021		Name Lang, Thomas	
				Date 13.01.2021		Name Lang, Thomas	
				Date 13.01.2021		Name Lang, Thomas	
				Date 13.01.2021		Name Lang, Thomas	
				Date 13.01.2021		Name Lang, Thomas	
				Date 13.01.2021		Name Lang, Thomas	
				Date 13.01.2021		Name Lang, Thomas	
				Date 13.01.2021		Name Lang, Thomas	
				Date 13.01.2021		Name Lang, Thomas	
				Date 13.01.2021		Name Lang, Thomas	
				Date 13.01.2021		Name Lang, Thomas	
				Date 13.01.2021		Name Lang, Thomas	
				Date 13.01.2021		Name Lang, Thomas	
				Date 13.01.2021		Name Lang, Thomas	
				Date 13.01.2021		Name Lang, Thomas	
				Date 13.01.2021		Name Lang, Thomas	
				Date 13.01.2021		Name Lang, Thomas	
				Date 13.01.2021		Name Lang, Thomas	
				Date 13.01.2021		Name Lang, Thomas	
				Date 13.01.2021		Name Lang, Thomas	
				Date 13.01.2021		Name Lang, Thomas	
				Date 13.01.2021		Name Lang, Thomas	
				Date 13.01.2021		Name Lang, Thomas	
				Date 13.01.2021		Name Lang, Thomas	
				Date 13.01.2021		Name Lang, Thomas	
				Date 13.01.2021		Name Lang, Thomas	
				Date 13.01.2021		Name Lang, Thomas	
				Date 13.01.2021		Name Lang, Thomas	
				Date 13.01.2021		Name Lang, Thomas	
				Date 13.01.2021		Name Lang, Thomas	
				Date 13.01.2021		Name Lang, Thomas	
				Date 13.01.2021		Name Lang, Thomas	
				Date 13.01.2021		Name Lang, Thomas	
				Date 13.01.2021		Name Lang, Thomas	
				Date 13.01.2021		Name Lang, Thomas	
				Date 13.01.2021		Name Lang, Thomas	
				Date 13.01.2021		Name Lang, Thomas	
				Date 13.01.2021		Name Lang, Thomas	
				Date 13.01.2021		Name Lang, Thomas	
				Date 13.01.2021		Name Lang, Thomas	
				Date 13.01.2021		Name Lang, Thomas	
				Date 13.01.2021		Name Lang, Thomas	
				Date 13.01.2021		Name Lang, Thomas	
				Date 13.01.2021		Name Lang, Thomas	
				Date 13.01.2021		Name Lang, Thomas	
				Date 13.01.2021		Name Lang, Thomas	
				Date 13.01.2021		Name Lang, Thomas	
				Date 13.01.2021		Name Lang, Thomas	
				Date 13.01.2021		Name Lang, Thomas	
				Date 13.01.2021		Name Lang, Thomas	
				Date 13.01.2021		Name Lang, Thomas	
				Date 13.01.2021		Name Lang, Thomas	
				Date 13.01.2021		Name Lang, Thomas	
				Date 13.01.2021		Name Lang, Thomas	
				Date 13.01.2021		Name Lang, Thomas	
				Date 13.01.2021		Name Lang, Thomas	
				Date 13.01.2021		Name Lang, Thomas	
				Date 13.01.2021		Name Lang, Thomas	
				Date 13.01.2021		Name Lang, Thomas	
				Date 13.01.2021		Name Lang, Thomas	
				Date 13.01.2021		Name Lang, Thomas	
				Date 13.01.2021		Name Lang, Thomas	
				Date 13.01.2021		Name Lang, Thomas	
				Date 13.01.2021		Name Lang, Thomas	
				Date 13.01.2021		Name Lang, Thomas	
				Date 13.01.2021			

## Recommended wave soldering profiles

**Weidmüller Interface GmbH & Co. KG**  
Klingenbergstraße 16  
D-32758 Detmold  
Germany  
Fon: +49 5231 14-0  
Fax: +49 5231 14-292083  
[www.weidmueller.com](http://www.weidmueller.com)

### Single Wave:



### Double Wave:



### Wave soldering profiles

Wired connection elements should be processed in accordance with the DIN EN 61760-1 standard. We have included two recommendations for practical wave soldering profiles, with which Weidmüller PCB terminals and connectors are qualified.

When choosing a suitable profile for your application, the following factors also need to be considered:

- PCB thickness
- Proportion of Cu in the layers
- Single/double-sided assembly
- Product range
- Heating and cooling rates

The single and double wave profiles each indicate the recommended operating range, including the maximum soldering temperature of 260°C. In practice, the maximum soldering temperature is quite often well below the above maximum profile.

We reserve the right to make technical changes.



## Recommended reflow soldering profile

**Weidmüller Interface GmbH & Co. KG**  
Klingenbergstraße 16  
D-32758 Detmold  
Germany  
Fon: +49 5231 14-0  
Fax: +49 5231 14-292083  
www.weidmueller.com



## Reflow soldering profile

The perfect soldering profile for SMT Surface Mount Technology is one the most exiting question in SMT production. But there are more than one correct answer: The diagram of temperature-on-time is related to processing features of solder paste and to maximum load of components.

We have to consider the following parameters:

- Time for pre heating
- Maximum temperature
- Time above melting point
- Time for cooling
- Maximum heating rate
- Maximum cooling rate

We recommend a typical solder profile with associated process limits. With preheating components and board are prepared smoothly for the solder phase. Heating rate is typically  $\leq +3\text{K/s}$ . In parallel the solder paste is 'activated'. The time above melting point of 217°C the paste gets liquid and components and boards begin to connect. The maximum temperature of 245°C to 254°C should stay between 10 and 40 seconds. In the cooling phase at  $\geq -6\text{K/s}$  solder is cured. Board and components cool down while avoiding cold cracks.