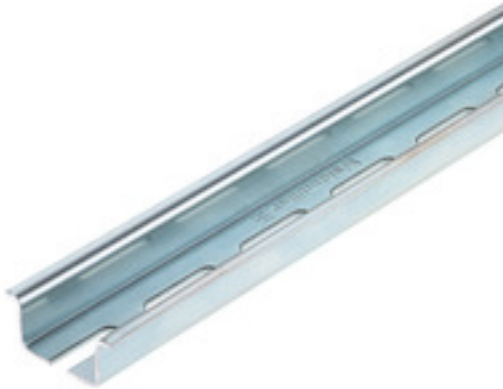


**TS 35X15/5X18 2M/ST/ZN****Weidmüller Interface GmbH & Co. KG**

Klingenbergstraße 26

D-32758 Detmold

Germany

[www.weidmueller.com](http://www.weidmueller.com)**Product image**

Similar to illustration

Steel DIN rails are the most widespread on the market.  
Among metal DIN rails, they have the lowest shortcircuit  
protection, similar to stainless steel.

**General ordering data**

Version	Terminal rail, with slot, Accessories, 35 x 15 x 2000 mm, Slit width: 5.20 mm, Slit length: 18.00 mm, Steel, galvanic zinc plated and passivated
Order No.	<a href="#">1837380000</a>
Type	TS 35X15/5X18 2M/ST/ZN
GTIN (EAN)	4032248346547
Qty.	2 m

## TS 35X15/5X18 2M/ST/ZN

Weidmüller Interface GmbH &amp; Co. KG

Klingenbergstraße 26

D-32758 Detmold

Germany

www.weidmueller.com

## Technical data

## Dimensions and weights

Depth	15 mm	Depth (inches)	0.591 inch
Height	35 mm	Height (inches)	1.378 inch
Width	2,000 mm	Width (inches)	78.74 inch
Net weight	620 g		

## Mounting rail

Installation advice	Direct mounting	
Length of the terminal rail	nominal	2,000 mm
	max.	2,000 mm
	min.	0 mm
Material	Steel	
Pre-punched mounting rail	Yes	
Short circuit strength corresponds to E-Cu wire	50 mm²	
Short-time withstand current per second 6 kA according to IEC 60947-7-2		
Slit gap	7 mm	
Slit gap		
Slit length	18 mm	
Slit length		
Slit width	5.2 mm	
Slit width		
Standards	In accordance with DIN EN 60715	
Surface finish	galvanic zinc plated and passivated	

## Classifications

ETIM 6.0	EC001285	ETIM 7.0	EC001285
ETIM 8.0	EC001285	ETIM 9.0	EC001285
ECLASS 9.0	27-40-06-02	ECLASS 9.1	27-40-06-02
ECLASS 10.0	27-40-06-02	ECLASS 11.0	27-40-06-02
ECLASS 12.0	27-40-06-02	ECLASS 13.0	27-40-06-02

## Approvals

ROHS	Conform
------	---------

## Downloads

Engineering Data	<a href="#">CAD data – STEP</a>
User Documentation	<a href="#">StorageConditionsTerminalBlocks</a>
Catalogues	<a href="#">Catalogues in PDF-format</a>

## TS 35X15/5X18 2M/ST/ZN

**Weidmüller Interface GmbH & Co. KG**

Klingenbergstraße 26

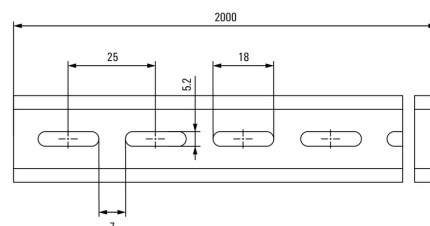
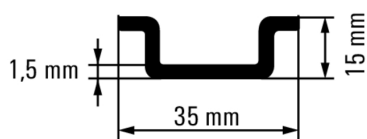
D-32758 Detmold

Germany

[www.weidmueller.com](http://www.weidmueller.com)

# Drawings

## Product image



Similar to illustration

**TS 35X15/5X18 2M/ST/ZN****Weidmüller Interface GmbH & Co. KG**

Klingenbergstraße 26

D-32758 Detmold

Germany

[www.weidmueller.com](http://www.weidmueller.com)**Accessories****Mounting feet**

Mounting feet are used to mount components that cannot be snapped directly on a DIN rail.

**General ordering data**

Type	FM 4/TS35	Version
Order No.	<a href="#">0687900000</a>	Mounting foot on mounting rail, TS 35, M 4
GTIN (EAN)	4008190086459	
Qty.	40 pc(s).	

**Mounting feet**

Mounting feet are used to mount components that cannot be snapped directly on a DIN rail.

**General ordering data**

Type	MOFU 35/LO/1	Version
Order No.	<a href="#">0646260000</a>	Mounting foot (terminal)
GTIN (EAN)	4008190178574	
Qty.	20 pc(s).	

## TS 35X15/5X18 2M/ST/ZN

Weidmüller Interface GmbH &amp; Co. KG

Klingenbergstraße 26

D-32758 Detmold

Germany

www.weidmueller.com

## Accessories

## W-Series



Weidmüller's range of products includes end brackets that guarantee a permanent, reliable mounting on the terminal rail and prevent sliding. Versions with and without screws are available. The end brackets include marking options, also for group markers, and also a test plug holder.

## General ordering data

Type	WEW 35/1	Version
Order No.	<a href="#">1059000000</a>	End bracket, Wemid, dark beige, Rail: TS 35, when screwed in
GTIN (EAN)	4008190172282	
Qty.	50 pc(s).	
Type	WEW 35/2	Version
Order No.	<a href="#">1061200000</a>	End bracket, Wemid, dark beige, Rail: TS 35, when screwed in
GTIN (EAN)	4008190030230	
Qty.	50 pc(s).	

## Mounting support



We offer a broad portfolio of mounting support for easy handling and supplementation of our products. From various tools to insulating sleeves and various screws, our components are matched to each other down to the last detail and thus facilitate assembly in compliance with the respective standards and protective regulations.

## General ordering data

Type	WSH 1	Version
Order No.	<a href="#">1068700000</a>	Accessories, Rail support, PA 66 GF 30
GTIN (EAN)	4008190118389	
Qty.	10 pc(s).	
Type	WSH 6	Version
Order No.	<a href="#">1080200000</a>	Accessories, Rail support, Wemid
GTIN (EAN)	4008190965150	
Qty.	10 pc(s).	
Type	WSH 3/H/N	Version
Order No.	<a href="#">1715970000</a>	Accessories, Rail support, Wemid
GTIN (EAN)	4008190353100	
Qty.	10 pc(s).	
Type	WSH 5	Version
Order No.	<a href="#">1080100000</a>	Accessories, Rail support, Wemid
GTIN (EAN)	4008190965143	
Qty.	10 pc(s).	

## TS 35X15/5X18 2M/ST/ZN

Weidmüller Interface GmbH &amp; Co. KG

Klingenbergstraße 26

D-32758 Detmold

Germany

www.weidmueller.com

## Accessories

## Installation material

**Integrate, expand and customise - the perfect supplement to every application**

The fully structured range of system accessories for the new Klippon® TB enclosure series allows you to easily adapt the enclosures to meet the specific requirements of every application.

**Mounting hardware kits**

Mounting hardware kits are available for quick and easy installation of type label holders, document holders and rain hoods.

The **label fastening set – SD** is required to install a plastic (Trafolyte) ID or type label. With the aid of this set can you mount the ID or type label directly on the enclosure cover. The label fastening set has been specially developed for this purpose. Only by using this fastening set can you ensure that there will be no leaks into the enclosure or damage to the label.

The **universal fastening set – TPSD** has been developed to enable secure and quick installation of type label holders, rain covers or document holders, for example. By using this fastening set, the risk of leaks can be minimised, if not avoided.

## General ordering data

Type	FKSC M6X8 D9/SW3	Version
Order No.	<a href="#">0642600000</a>	Klippon TB (Terminal Box), Mounting screw, Material: Steel
GTIN (EAN)	4008190058258	
Qty.	50 pc(s).	

## Mounting rail support



Mounting rail supports can be used to mount din rails at any location in the cabinet. The resulting raised or angled din rail offers the installer both easier component mounting and wiring.

## General ordering data

Type	SH 2	Version
Order No.	<a href="#">0494920000</a>	Busbar support
GTIN (EAN)	4008190007584	
Qty.	10 pc(s).	

Type	TSTW D 4.3	Version
Order No.	<a href="#">1610110000</a>	Mounting foot for mounting rail, Steel
GTIN (EAN)	4008190185305	
Qty.	10 pc(s).	

## TS 35X15/5X18 2M/ST/ZN

**Weidmüller Interface GmbH & Co. KG**

Klingenbergstraße 26

D-32758 Detmold

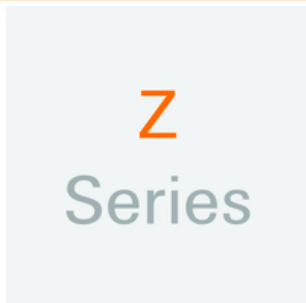
Germany

[www.weidmueller.com](http://www.weidmueller.com)

## Accessories

Type	TST 2/M6	Version
Order No.	<a href="#">0101700000</a>	Mounting foot for mounting rail, M 6, Steel
GTIN (EAN)	4008190069254	
Qty.	10 pc(s).	
Type	TST 2/M5	Version
Order No.	<a href="#">1286600000</a>	Mounting foot for mounting rail, M 5, Steel
GTIN (EAN)	4008190144777	
Qty.	10 pc(s).	
Type	TSTW 5/M5	Version
Order No.	<a href="#">0178100000</a>	Mounting foot for mounting rail, M 5, Steel
GTIN (EAN)	4008190059651	
Qty.	10 pc(s).	
Type	TSTW 6/M6	Version
Order No.	<a href="#">0164000000</a>	Mounting foot for mounting rail, M 6, Steel
GTIN (EAN)	4008190095345	
Qty.	10 pc(s).	
Type	TSTW 5/M5 ZN	Version
Order No.	<a href="#">1779100000</a>	Mounting foot for mounting rail, M 5, Steel
GTIN (EAN)	4032248169894	
Qty.	10 pc(s).	

## Z-Series



Weidmüller's range of products includes end brackets that guarantee a permanent, reliable mounting on the terminal rail and prevent sliding. Versions with and without screws are available. The end brackets include marking options, also for group markers, and also a test plug holder.

## General ordering data

Type	ZEW 35	Version
Order No.	<a href="#">9540000000</a>	End bracket, Wemid, dark beige, Rail: TS 35, Snap-on
GTIN (EAN)	4008190956264	
Qty.	20 pc(s).	
Type	ZEW 35/2	Version
Order No.	<a href="#">8630740000</a>	End bracket, Wemid, dark beige, Rail: TS 35, Snap-on
GTIN (EAN)	4032248348916	
Qty.	20 pc(s).	

## TS 35X15/5X18 2M/ST/ZN

**Weidmüller Interface GmbH & Co. KG**

Klingenbergstraße 26

D-32758 Detmold

Germany

[www.weidmueller.com](http://www.weidmueller.com)

## Accessories

### End caps



End caps for the mounting rails provide protection against sharp edges and visually close off the end of the mounting rail.

### General ordering data

Type	TS END CAP 35X15	Version
Order No.	<a href="#">1283480000</a>	Terminal cover, Polypropylene, dark beige, Height: 37.5 mm, Width: 7
GTIN (EAN)	4050118077995	mm, Depth: 16.5 mm
Qty.	100 pc(s).	

### SAK-Series

**SAK**  
Series

Weidmüller's range of products includes end brackets that guarantee a permanent, reliable mounting on the terminal rail and prevent sliding. Versions with and without screws are available. The end brackets include marking options, also for group markers, and also a test plug holder.

### General ordering data

Type	EW 35 GR 7032	Version
Order No.	<a href="#">0383530000</a>	End bracket, Wemid, grey, Rail: TS 35, when screwed in
GTIN (EAN)	4008190027322	
Qty.	50 pc(s).	
Type	EW 35/SCHA/M3	Version
Order No.	<a href="#">0258660000</a>	End bracket, Wemid, beige, Rail: TS 35, when screwed in
GTIN (EAN)	4008190033477	
Qty.	20 pc(s).	
Type	EW 35	Version
Order No.	<a href="#">0383560000</a>	End bracket, Wemid, beige, Rail: TS 35, when screwed in
GTIN (EAN)	4008190181314	
Qty.	50 pc(s).	

**TS 35X15/5X18 2M/ST/ZN****Weidmüller Interface GmbH & Co. KG**

Klingenbergstraße 26

D-32758 Detmold

Germany

[www.weidmueller.com](http://www.weidmueller.com)**Accessories****Screws**

Depending on the terminal block or also accessories, we offer different types of screws as additional items or also spare parts.

**General ordering data**

Type	FKSC M4X6 D8/SW2	Version
Order No.	<a href="#">1567480000</a>	SAK Series, Allen hex screw, Screws, Number of poles: 1
GTIN (EAN)	4008190033491	
Qty.	100 pc(s).	
Type	FKSC M5X8 D9/SW2.5	Version
Order No.	<a href="#">0295900000</a>	SAK Series, Allen hex screw, Screws, Number of poles: 1
GTIN (EAN)	4008190133337	
Qty.	50 pc(s).	
Type	FKSC M6X12 D9/SW3	Version
Order No.	<a href="#">0353500000</a>	SAK Series, Allen hex screw, Screws, Number of poles: 1
GTIN (EAN)	4008190139285	
Qty.	50 pc(s).	