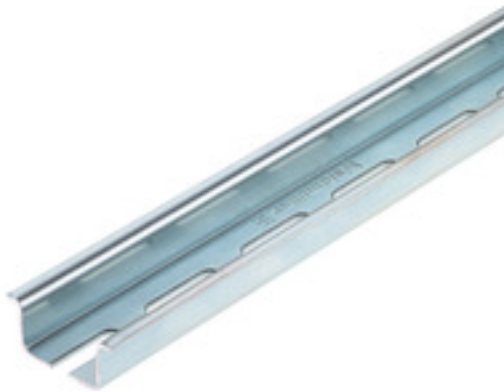


TS 35X15/6X18 2M/ST/ZN**Weidmüller Interface GmbH & Co. KG**

Klingenbergstraße 26

D-32758 Detmold

Germany

www.weidmueller.com**Product image**

Similar to illustration

Steel DIN rails are the most widespread on the market.
Among metal DIN rails, they have the lowest shortcircuit
protection, similar to stainless steel.

General ordering data

Version	Terminal rail, with slot, Accessories, 35 x 15 x 2000 mm, Slit width: 6.30 mm, Slit length: 18.00 mm, Steel, galvanic zinc plated and passivated
Order No.	1805980000
Type	TS 35X15/6X18 2M/ST/ZN
GTIN (EAN)	4032248274536
Qty.	2 m

TS 35X15/6X18 2M/ST/ZN

Weidmüller Interface GmbH & Co. KG

Klingenbergstraße 26

D-32758 Detmold

Germany

www.weidmueller.com

Technical data

Dimensions and weights

Depth	15 mm	Depth (inches)	0.591 inch
Height	35 mm	Height (inches)	1.378 inch
Width	2,000 mm	Width (inches)	78.74 inch
Net weight	620 g		

Mounting rail

Installation advice	Direct mounting	
Length of the terminal rail	nominal	2,000 mm
	min.	0 mm
	max.	2,000 mm
Material	Steel	
Pre-punched mounting rail	Yes	
Short circuit strength corresponds to E-Cu wire	50 mm²	
Short-time withstand current per second according to IEC 60947-7-2	6 kA	
Slit gap	7 mm	
Slit gap		
Slit length	18 mm	
Slit length		
Slit width	6.3 mm	
Slit width		
Standards	In accordance with DIN EN 60715	
Surface finish	galvanic zinc plated and passivated	
Thickness	1.5 mm	

Classifications

ETIM 6.0	EC001285	ETIM 7.0	EC001285
ETIM 8.0	EC001285	ETIM 9.0	EC001285
ECLASS 9.0	27-40-06-02	ECLASS 9.1	27-40-06-02
ECLASS 10.0	27-40-06-02	ECLASS 11.0	27-40-06-02
ECLASS 12.0	27-40-06-02	ECLASS 13.0	27-40-06-02

Approvals

ROHS	Conform
------	---------

Downloads

Engineering Data	CAD data – STEP
Engineering Data	Zuken E3.S
User Documentation	StorageConditionsTerminalBlocks
Catalogues	Catalogues in PDF-format
Brochures	

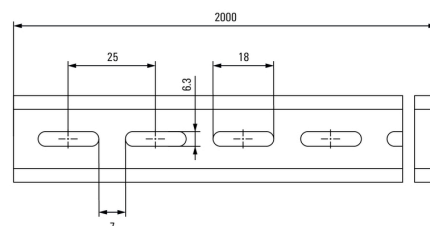
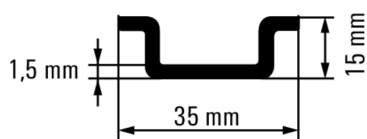
TS 35X15/6X18 2M/ST/ZN

Weidmüller Interface GmbH & Co. KG
Klingenbergstraße 26
D-32758 Detmold
Germany

www.weidmueller.com

Drawings

Product image



Similar to illustration

TS 35X15/6X18 2M/ST/ZN**Weidmüller Interface GmbH & Co. KG**

Klingenbergstraße 26

D-32758 Detmold

Germany

www.weidmueller.com**Accessories****W-Series****W**
Series

Weidmüller's range of products includes end brackets that guarantee a permanent, reliable mounting on the terminal rail and prevent sliding. Versions with and without screws are available. The end brackets include marking options, also for group markers, and also a test plug holder.

General ordering data

Type	WEW 35/2	Version
Order No.	1061200000	End bracket, Wemid, dark beige, Rail: TS 35, when screwed in
GTIN (EAN)	4008190030230	
Qty.	50 pc(s).	
Type	WEW 35/1	Version
Order No.	1059000000	End bracket, Wemid, dark beige, Rail: TS 35, when screwed in
GTIN (EAN)	4008190172282	
Qty.	50 pc(s).	

Screws

Depending on the terminal block or also accessories, we offer different types of screws as additional items or also spare parts.

General ordering data

Type	FKSC M5X8 D9/SW2.5	Version
Order No.	0295900000	SAK Series, Allen hex screw, Screws, Number of poles: 1
GTIN (EAN)	4008190133337	
Qty.	50 pc(s).	
Type	FKSC M4X6 D8/SW2	Version
Order No.	1567480000	SAK Series, Allen hex screw, Screws, Number of poles: 1
GTIN (EAN)	4008190033491	
Qty.	100 pc(s).	
Type	FKSC M6X12 D9/SW3	Version
Order No.	0353500000	SAK Series, Allen hex screw, Screws, Number of poles: 1
GTIN (EAN)	4008190139285	
Qty.	50 pc(s).	

TS 35X15/6X18 2M/ST/ZN**Weidmüller Interface GmbH & Co. KG**

Klingenbergstraße 26

D-32758 Detmold

Germany

www.weidmueller.com**Accessories****Mounting rail support****General ordering data**

Type	TSTW D 4.3	Version
Order No.	1610110000	Mounting foot for mounting rail, Steel
GTIN (EAN)	4008190185305	
Qty.	10 pc(s).	
Type	SH 2	Version
Order No.	0494920000	Busbar support
GTIN (EAN)	4008190007584	
Qty.	10 pc(s).	
Type	TST 2/M6	Version
Order No.	0101700000	Mounting foot for mounting rail, M 6, Steel
GTIN (EAN)	4008190069254	
Qty.	10 pc(s).	
Type	TSTW 5/M5 ZN	Version
Order No.	1779100000	Mounting foot for mounting rail, M 5, Steel
GTIN (EAN)	4032248169894	
Qty.	10 pc(s).	
Type	TSTW 5/M5	Version
Order No.	0178100000	Mounting foot for mounting rail, M 5, Steel
GTIN (EAN)	4008190059651	
Qty.	10 pc(s).	
Type	TSTW 6/M6	Version
Order No.	0164000000	Mounting foot for mounting rail, M 6, Steel
GTIN (EAN)	4008190095345	
Qty.	10 pc(s).	
Type	TST 2/M5	Version
Order No.	1286600000	Mounting foot for mounting rail, M 5, Steel
GTIN (EAN)	4008190144777	
Qty.	10 pc(s).	

TS 35X15/6X18 2M/ST/ZN**Weidmüller Interface GmbH & Co. KG**

Klingenbergstraße 26

D-32758 Detmold

Germany

www.weidmueller.com**Accessories****Mounting feet**

Mounting feet are used to mount components that cannot be snapped directly on a DIN rail.

General ordering data

Type	MOFU 35/LO/1	Version
Order No.	0646260000	Mounting foot (terminal)
GTIN (EAN)	4008190178574	
Qty.	20 pc(s).	

Mounting feet

Mounting feet are used to mount components that cannot be snapped directly on a DIN rail.

General ordering data

Type	FM 4/TS35	Version
Order No.	0687900000	Mounting foot on mounting rail, TS 35, M 4
GTIN (EAN)	4008190086459	
Qty.	40 pc(s).	

TS 35X15/6X18 2M/ST/ZN

Weidmüller Interface GmbH & Co. KG

Klingenbergstraße 26

D-32758 Detmold

Germany

www.weidmueller.com

Accessories

Installation material

**Integrate, expand and customise - the perfect supplement to every application**

The fully structured range of system accessories for the new Klippon® TB enclosure series allows you to easily adapt the enclosures to meet the specific requirements of every application.

Mounting hardware kits

Mounting hardware kits are available for quick and easy installation of type label holders, document holders and rain hoods.

The **label fastening set – SD** is required to install a plastic (Trafolyte) ID or type label. With the aid of this set can you mount the ID or type label directly on the enclosure cover. The label fastening set has been specially developed for this purpose. Only by using this fastening set can you ensure that there will be no leaks into the enclosure or damage to the label.

The **universal fastening set – TPSD** has been developed to enable secure and quick installation of type label holders, rain covers or document holders, for example. By using this fastening set, the risk of leaks can be minimised, if not avoided.

General ordering data

Type	FKSC M6X8 D9/SW3	Version
Order No.	0642600000	Klippon TB (Terminal Box), Mounting screw, Material: Steel
GTIN (EAN)	4008190058258	
Qty.	50 pc(s).	

SAK-Series



Weidmüller's range of products includes end brackets that guarantee a permanent, reliable mounting on the terminal rail and prevent sliding. Versions with and without screws are available. The end brackets include marking options, also for group markers, and also a test plug holder.

General ordering data

Type	EW 35	Version
Order No.	0383560000	End bracket, Wemid, beige, Rail: TS 35, when screwed in
GTIN (EAN)	4008190181314	
Qty.	50 pc(s).	
Type	EW 35 GR 7032	Version
Order No.	0383530000	End bracket, Wemid, grey, Rail: TS 35, when screwed in
GTIN (EAN)	4008190027322	
Qty.	50 pc(s).	

TS 35X15/6X18 2M/ST/ZN

Weidmüller Interface GmbH & Co. KG

Klingenbergstraße 26

D-32758 Detmold

Germany

www.weidmueller.com

Accessories

Type	EW 35/SCHA/M3	Version
Order No.	0258660000	End bracket, Wemid, beige, Rail: TS 35, when screwed in
GTIN (EAN)	4008190033477	
Qty.	20 pc(s).	

End caps

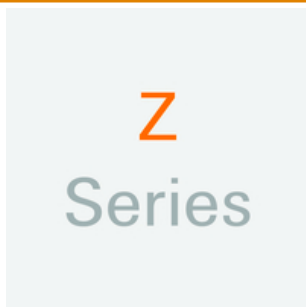


End caps for the mounting rails provide protection against sharp edges and visually close off the end of the mounting rail.

General ordering data

Type	TS END CAP 35X15	Version
Order No.	1283480000	Terminal cover, Polypropylene, dark beige, Height: 37.5 mm, Width: 7 mm, Depth: 16.5 mm
GTIN (EAN)	4050118077995	
Qty.	100 pc(s).	

Z-Series



Weidmüller's range of products includes end brackets that guarantee a permanent, reliable mounting on the terminal rail and prevent sliding. Versions with and without screws are available. The end brackets include marking options, also for group markers, and also a test plug holder.

General ordering data

Type	ZEW 35	Version
Order No.	9540000000	End bracket, Wemid, dark beige, Rail: TS 35, Snap-on
GTIN (EAN)	4008190956264	
Qty.	20 pc(s).	
Type	ZEW 35/2	Version
Order No.	8630740000	End bracket, Wemid, dark beige, Rail: TS 35, Snap-on
GTIN (EAN)	4032248348916	
Qty.	20 pc(s).	

TS 35X15/6X18 2M/ST/ZN**Weidmüller Interface GmbH & Co. KG**

Klingenbergstraße 26

D-32758 Detmold

Germany

www.weidmueller.com**Accessories****Mounting support**

We offer a broad portfolio of mounting support for easy handling and supplementation of our products. From various tools to insulating sleeves and various screws, our components are matched to each other down to the last detail and thus facilitate assembly in compliance with the respective standards and protective regulations.

General ordering data

Type	WSH 5	Version
Order No.	1080100000	Accessories, Rail support, Wemid
GTIN (EAN)	4008190965143	
Qty.	10 pc(s).	
Type	WSH 1	Version
Order No.	1068700000	Accessories, Rail support, PA 66 GF 30
GTIN (EAN)	4008190118389	
Qty.	10 pc(s).	
Type	WSH 6	Version
Order No.	1080200000	Accessories, Rail support, Wemid
GTIN (EAN)	4008190965150	
Qty.	10 pc(s).	
Type	WSH 3/H/N	Version
Order No.	1715970000	Accessories, Rail support, Wemid
GTIN (EAN)	4008190353100	
Qty.	10 pc(s).	