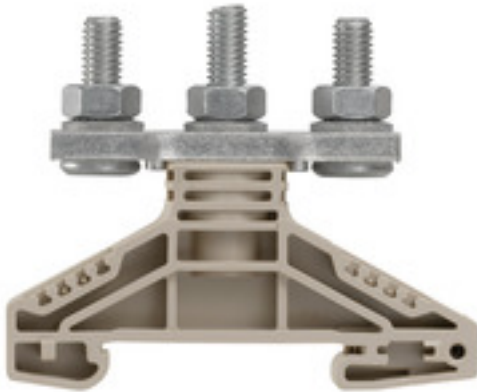


WF 6/2BZ**Weidmüller Interface GmbH & Co. KG**

Klingenbergstraße 26

D-32758 Detmold

Germany

www.weidmueller.com**Product image**

The comprehensive range of stud terminals ensures secure connections for all power transmission applications. Connections range from 10 mm² to 300 mm². The connectors are attached to the threaded pins using crimped cable lugs and each connection is secured by tightening the hexagon nut. Stud terminals with threaded pins from M5 to M16 can be used according to the wire cross-section.

General ordering data

| | |
|------------|--|
| Version | Bolt-type screw terminals, Feed-through terminal, Rated cross-section: 35 mm ² , Threaded stud connection |
| Order No. | 1789770000 |
| Type | WF 6/2BZ |
| GTIN (EAN) | 4032248251124 |
| Qty. | 25 pc(s). |

WF 6/2BZ

Weidmüller Interface GmbH & Co. KG

Klingenbergstraße 26

D-32758 Detmold

Germany

www.weidmueller.com

Technical data

Dimensions and weights

| | | | |
|------------|----------|-----------------|------------|
| Depth | 54.5 mm | Depth (inches) | 2.146 inch |
| Height | 67 mm | Height (inches) | 2.638 inch |
| Width | 17.8 mm | Width (inches) | 0.701 inch |
| Net weight | 66.754 g | | |

Temperatures

| | | | |
|----------------------------------|----------------|----------------------------------|--------|
| Storage temperature | -25 °C...55 °C | Continuous operating temp., min. | -50 °C |
| Continuous operating temp., max. | 120 °C | | |

Material data

| | | | |
|---------------------------|-------|--------|------------|
| Material | Wemid | Colour | dark beige |
| UL 94 flammability rating | V-0 | | |

System specifications

| | | | |
|-------------------------------------|----|-----------------------------------|-------|
| End cover plate required | No | Number of levels | 1 |
| Number of clamping points per level | 3 | Levels cross-connected internally | No |
| PE connection | No | Rail | TS 35 |

Additional technical data

| | | | |
|--------------------------|---------|------------|------|
| Explosion-tested version | No | Open sides | Open |
| Type of mounting | Snap-on | | |

CSA rating data

| | | | |
|-----------------------|----------------|-------------------------------|-------|
| Certificate No. (CSA) | 200039-1244019 | Current size C (CSA) | 115 A |
| Voltage size C (CSA) | 1000 V | Wire cross section max. (CSA) | 2 AWG |

Conductors for clamping (rated connection)

| | | | |
|---------------------------|---------------------------|--------------------------------|------------------------|
| 2 x cable lugs DIN 46 234 | 2.5 to 35 mm ² | 2 x cable lugs DIN 46 235 | 6...25 mm ² |
| Cable lug to DIN 46234 | 2.5...35 mm ² | Cable lug to DIN 46235 | 6...25 mm ² |
| Clamping range, max. | 35 mm ² | Clamping range, min. | 2.5 mm ² |
| Number of connections | 3 | Stud size for spade connection | M 6 |
| Tightening torque, max. | 6 Nm | Tightening torque, min. | 3 Nm |
| Type of connection | Threaded stud connection | | |

General

| | |
|------|-------|
| Rail | TS 35 |
|------|-------|

Rating data

| | | | |
|---------------------------------|--------------------|--|---------|
| Rated cross-section | 35 mm ² | Rated voltage | 1,000 V |
| Rated DC voltage | 1,000 V | Rated current | 125 A |
| Current at maximum wires | 125 A | Volume resistance according to IEC 60947-7-x | 0.26 mΩ |
| Rated impulse withstand voltage | 8 kV | Power loss in accordance with IEC 60947-7-x | 4 W |
| Pollution severity | 3 | | |

WF 6/2BZ

Weidmüller Interface GmbH & Co. KG

Klingenbergstraße 26

D-32758 Detmold

Germany

www.weidmueller.com

Technical data

UL rating data

| | | | |
|--|--------|--|-------|
| Certificate No. (cURus) | E60693 | Conductor size Factory wiring max. (cURus) | 2 AWG |
| Conductor size Factory wiring min. (cURus) | 2 AWG | Current size C (cURus) | 115 A |
| Voltage size C (cURus) | 1000 V | | |

Classifications

| | | | |
|-------------|-------------|-------------|-------------|
| ETIM 6.0 | EC000897 | ETIM 7.0 | EC000897 |
| ETIM 8.0 | EC000897 | ETIM 9.0 | EC000897 |
| ECLASS 9.0 | 27-14-11-20 | ECLASS 9.1 | 27-14-11-20 |
| ECLASS 10.0 | 27-14-11-20 | ECLASS 11.0 | 27-14-11-20 |
| ECLASS 12.0 | 27-14-11-20 | ECLASS 13.0 | 27-25-01-01 |

Environmental Product Compliance

| | |
|------------------------|-----------------------------|
| REACH SVHC | / |
| RoHS Compliance Status | Compliant without exemption |

Approvals

Approvals



| | |
|-------------------------|------------|
| ROHS | Conform |
| UL File Number Search | UL Website |
| Certificate No. (cURus) | E60693 |

Downloads

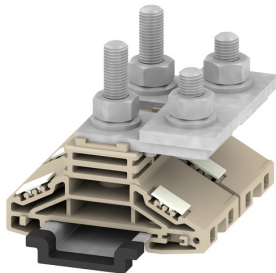
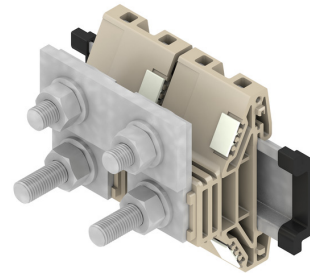
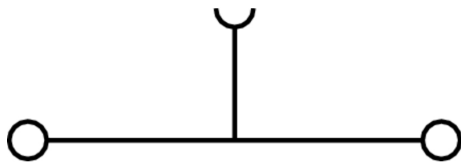
| | |
|---|---|
| Approval/Certificate/Document of Conformity | CB Test Certificate CB Certificate CE Declaration of Conformity UKCA declaration of conformity Confirmation of Standards EN 45545-2_2020-10 |
| Engineering Data | CAD data – STEP |
| User Documentation | StorageConditionsTerminalBlocks |
| Catalogues | Catalogues in PDF-format |
| Brochures | |

WF 6/2BZ

Weidmüller Interface GmbH & Co. KG
Klingenbergstraße 26
D-32758 Detmold
Germany

www.weidmueller.com

Drawings



WF 6/2BZ

Weidmüller Interface GmbH & Co. KG

Klingenbergstraße 26

D-32758 Detmold

Germany

www.weidmueller.com

Accessories

Cover profiles



Cover profiles provide protection against external impact on functional areas of the terminal blocks or in combination with our support brackets for the entire terminal strip. They provide protection against electric shock caused by accidental contact with live parts due to operation or faults.

General ordering data

| | | |
|------------|----------------------------|--|
| Type | HA ADP WF6/WF10 | Version |
| Order No. | 1781050000 | Bolt-type screw terminals, Cover profile, dark beige, 2.2 mm |
| GTIN (EAN) | 4032248241231 | |
| Qty. | 10 pc(s). | |
| Type | ADP WF10/WF12 | Version |
| Order No. | 1780940000 | Bolt-type screw terminals, Cover profile, Transparent, 1000 mm |
| GTIN (EAN) | 4032248241255 | |
| Qty. | 1 m | |

Marker holder



The marker holder offer the possibility of additional mounting of standard markers with a pitch of 5 or 5.1 mm. The angled holders can be optionally snapped together and could be mounted in all standard marking channels of the Klippon® Connect modular terminal blocks. Fitting marker types could be found under the respective accessories of the designation marking holder.

General ordering data

| | | |
|------------|----------------------------|----------------------------|
| Type | BZT 1 WS 10/5 | Version |
| Order No. | 1805490000 | Accessories, Marker holder |
| GTIN (EAN) | 4032248270231 | |
| Qty. | 100 pc(s). | |
| Type | BZT 1 ZA WS 10/5 | Version |
| Order No. | 1805520000 | Accessories, Marker holder |
| GTIN (EAN) | 4032248270248 | |
| Qty. | 100 pc(s). | |

WF 6/2BZ**Weidmüller Interface GmbH & Co. KG**

Klingenbergstraße 26

D-32758 Detmold

Germany

www.weidmueller.com**Accessories****WF/WFF-Series****WF/WFF**
Series

The additional connection enables a separate voltage tap. This can be used, for example, for the emergency power supply before the main switch or simply as an additional connection within the application.

General ordering data

| | | |
|------------|----------------------------|---------------------------------|
| Type | WZAF 35 | Version |
| Order No. | 1070500000 | Auxiliary connection (terminal) |
| GTIN (EAN) | 4008190024512 | |
| Qty. | 10 pc(s). | |

W-Series**W**
Series

Weidmüller's range of products includes end brackets that guarantee a permanent, reliable mounting on the terminal rail and prevent sliding. Versions with and without screws are available. The end brackets include marking options, also for group markers, and also a test plug holder.

General ordering data

| | | |
|------------|----------------------------|--|
| Type | WEW 35/2 | Version |
| Order No. | 1061200000 | End bracket, dark beige, TS 35, HB, Wemid, Width: 8 mm, 100 °C |
| GTIN (EAN) | 4008190030230 | |
| Qty. | 50 pc(s). | |

WF 6/2BZ

Weidmüller Interface GmbH & Co. KG

Klingenbergstraße 26

D-32758 Detmold

Germany

www.weidmueller.com

Accessories

Blank



WS markers are the perfect match for the W-series connectors. Thanks to their system compatibility, the WS tags can also be used with the I-series and the Z-series. The large marking surfaces do not only permit long character strings but also multi-line text. WS markers are ideal for labels with long, customised character strings. Thanks to the proven MultiCard format, printing with PrintJet CONNECT oder/or Plotter is possible.

- Can be fitted in strips or individually
- Markers in proven MultiCard format

For custom printing: Please send us a file of our labeling software M-Print PRO or M-Print PRO Online (without installation) for your labeling specifications.

General ordering data

| | | |
|------------|----------------------------|--|
| Type | WS 10/5 MC NE WS | Version |
| Order No. | 1635000000 | WS, Terminal marker, 10 x 5 mm, Pitch in mm (P): 5.00 Weidmueller, |
| GTIN (EAN) | 4008190261948 | Allen-Bradley, white |
| Qty. | 720 pc(s). | |

Standard



Screwable cross-connections are easy to mount and de mount. Thanks to the big contact surface, even high currents can be transmitted with maximum contact reliability.

General ordering data

| | | |
|------------|----------------------------|--|
| Type | WQL 3 WF6 | Version |
| Order No. | 1780980000 | Bolt-type screw terminals, Cross-connector, Number of poles: 3 |
| GTIN (EAN) | 4032248241194 | |
| Qty. | 5 pc(s). | |

| | | |
|------------|----------------------------|--|
| Type | WQL 2 WF6 | Version |
| Order No. | 1780970000 | Bolt-type screw terminals, Cross-connector, Number of poles: 2 |
| GTIN (EAN) | 4032248219407 | |
| Qty. | 5 pc(s). | |

WF 6/2BZ

Weidmüller Interface GmbH & Co. KG

Klingenbergstraße 26

D-32758 Detmold

Germany

www.weidmueller.com

Accessories

WF / WFF-Series

WF/WFF
Series

A partition plate is used for the optical separation of circuits or used for electrical isolation from neighbouring cross-connectors. In contrast to the end plate, the contour can be larger than the adjacent terminal blocks. However, it should not be smaller, as otherwise the required clearance and creepage distances within the application can no longer be maintained.

General ordering data

| | | |
|------------|----------------------------|--|
| Type | WTW WF10/WF12 | Version |
| Order No. | 1780890000 | Bolt-type screw terminals, Partition plate, dark beige, 3 mm |
| GTIN (EAN) | 4032248219391 | |
| Qty. | 20 pc(s). | |
| Type | WTW WF6 2300 | Version |
| Order No. | 1781230000 | Bolt-type screw terminals, Partition plate, grey, 2 mm |
| GTIN (EAN) | 4032248241125 | |
| Qty. | 20 pc(s). | |

Blank



WS markers are the perfect match for the W-series connectors. Thanks to their system compatibility, the WS tags can also be used with the I-series and the Z-series. The large marking surfaces do not only permit long character strings but also multi-line text. WS markers are ideal for labels with long, customised character strings. Thanks to the proven MultiCard format, printing with PrintJet CONNECT oder/or Plotter is possible.

- Can be fitted in strips or individually
- Markers in proven MultiCard format

For custom printing: Please send us a file of our labeling software M-Print PRO or M-Print PRO Online (without installation) for your labeling specifications.

General ordering data

| | | |
|------------|----------------------------|--|
| Type | WS 15/5 MC NE WS | Version |
| Order No. | 1609880000 | WS, Terminal marker, 15 x 5 mm, Pitch in mm (P): 5.00 Weidmueller, |
| GTIN (EAN) | 4008190203504 | Allen-Bradley, white |
| Qty. | 480 pc(s). | |