

**HDC 07A SLU 1M20G****Weidmüller Interface GmbH & Co. KG**

Klingenbergstraße 26

D-32758 Detmold

Germany

[www.weidmueller.com](http://www.weidmueller.com)**IP65**

The special die-cast alloy and the multi-layered surface sealing provide complete protection for the HDC housings.

The cleverly designed interlock system is manufactured from stainless steel. This guarantees a long lifespan with high resistance to corrosion and impact.

The housing interlock system provides integrated safety. Our unique, patented spring system provides the housing interlock with a secure grip and prevents accidental opening.

The laser marking allows for easy and quick identification. Each housing is permanently labelled with a laser marking so that each product can be quickly designated and positioned.

Weidmüller RockStar® IP 65 / NEMA Type 4X housings - your first choice for industrial housings with IP 65 protection.

**General ordering data**

Version	HDC enclosures, Size: 1, Protection degree: IP65 (in plugged condition), Base housing, Side-locking clamp on lower side, Standard, Size of cable entries: M 20
Order No.	<a href="#">1788530000</a>
Type	HDC 07A SLU 1M20G
GTIN (EAN)	4032248206063
Qty.	1 pc(s).

## HDC 07A SLU 1M20G

Weidmüller Interface GmbH &amp; Co. KG

Klingenbergstraße 26

D-32758 Detmold

Germany

www.weidmueller.com

## Technical data

## Dimensions and weights

Depth	26 mm	Depth (inches)	1.024 inch
Height	53 mm	Height (inches)	2.087 inch
Width	37 mm	Width (inches)	1.457 inch
Mounting dimension - width	30 mm	Net weight	22 g

## Temperatures

Limit temperature	-40 °C ... 125 °C
-------------------	-------------------

## Dimensions

Cable entry	w. thread	Height of base B1	3 mm
Height of housing B	42 mm	Hole pitch length A2	30 mm
Total length housing	27 mm	Width base C1	42 mm
Width housing C	24 mm		

## General data

EMC housings	No	Housing main material	Plastic
Material of locking element	Stainless steel, rust-proof	Protection degree	IP65 (in plugged condition)
Tightening torque	0.5 Nm	UL 94 flammability rating	V-0

## Version

BG	1	Cable entry	w. thread
Clamp version	Side-locking clamp	Colour (RAL)	RAL 1001
Design	Standard	Design of housing	Base housing
Design of locking system	Side-locking clamp on lower side	Internal thread	M 20
Number of cable entry on top	0	Number of cable entry sideways	1
Size	1	Size of cable entries	M 20
Suitable for ModuPlug®	No	Tightening torque	0.5 Nm
Top part/bottom part/lid	lower part	Type	Base housing

## Classifications

ETIM 6.0	EC000437	ETIM 7.0	EC000437
ETIM 8.0	EC000437	ETIM 9.0	EC000437
ECLASS 9.0	27-44-02-02	ECLASS 9.1	27-44-02-02
ECLASS 10.0	27-44-02-02	ECLASS 11.0	27-44-02-02
ECLASS 12.0	27-44-02-02	ECLASS 13.0	27-44-02-02
ECLASS 14.0	27-44-02-02		

Substance	Acetone
Chemical resistance	Conditionally resistant
Substance	Drilling oil
Chemical resistance	Resistant
Substance	Diesel
Chemical resistance	Resistant
Substance	Ethyl alcohol
Chemical resistance	Resistant

## HDC 07A SLU 1M20G

Weidmüller Interface GmbH &amp; Co. KG

Klingenbergstraße 26

D-32758 Detmold

Germany

www.weidmueller.com

## Technical data

Substance	Transmission oil
Chemical resistance	Resistant
Substance	Hydraulic oil
Chemical resistance	Resistant
Substance	Coolant
Chemical resistance	Resistant
Substance	Petroleum benzine
Chemical resistance	Resistant
Substance	Sweat
Chemical resistance	Resistant
Substance	Premium gasoline
Chemical resistance	Conditionally resistant
Substance	Water
Chemical resistance	Resistant
Substance	UV
Chemical resistance	Unstable
Substance	Ozone
Chemical resistance	Unstable

## Environmental Product Compliance

REACH SVHC	Potassium perfluorobutane sulfonate 29420-49-3
SCIP	2f94735a-9fba-4903-842f-4fb9aa902310
Chemical resistance	de.myview.objectmodel.impl.BlockImpl@2065f40a de.myview.objectmodel.impl.BlockImpl@4b9446f5 de.myview.objectmodel.impl.BlockImpl@1e699877 de.myview.objectmodel.impl.BlockImpl@796c7a0e de.myview.objectmodel.impl.BlockImpl@76a6048d de.myview.objectmodel.impl.BlockImpl@1fec5742 de.myview.objectmodel.impl.BlockImpl@4d14dee8 de.myview.objectmodel.impl.BlockImpl@5732614e de.myview.objectmodel.impl.BlockImpl@11769549 de.myview.objectmodel.impl.BlockImpl@6c5d8662 de.myview.objectmodel.impl.BlockImpl@755f69f de.myview.objectmodel.impl.BlockImpl@4329cf2a de.myview.objectmodel.impl.BlockImpl@6650d6db
RoHS Compliance Status	Compliant without exemption

## Approvals

Approvals



ROHS	Conform
UL File Number Search	UL Website
Certificate No. (cURus)	E92202

## HDC 07A SLU 1M20G

**Weidmüller Interface GmbH & Co. KG**

Klingenbergstraße 26

D-32758 Detmold

Germany

[www.weidmueller.com](http://www.weidmueller.com)

## Technical data

### Downloads

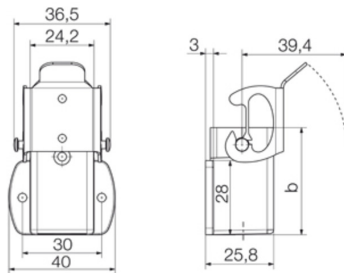
Engineering Data	<a href="#">CAD data – STEP</a>
Product Change Notification	<a href="#">20220214 Technical change to HDC housings</a> <a href="#">20220214 Technische Änderung bei HDC-Gehäusen</a>
Technical Documentation	<a href="#">1788530000 HDC_07A_SLU_1M20G_STP_Blatt_1.pdf</a>
Catalogues	<a href="#">Catalogues in PDF-format</a>
Brochures	<a href="#">FL FIELDWIRING EN</a> <a href="#">FL FIELDWIRING EN</a>

## HDC 07A SLU 1M20G

**Weidmüller Interface GmbH & Co. KG**  
Klingenbergstraße 26  
D-32758 Detmold  
Germany

[www.weidmueller.com](http://www.weidmueller.com)

## Drawings



## HDC 07A SLU 1M20G

Weidmüller Interface GmbH &amp; Co. KG

Klingenbergstraße 26

D-32758 Detmold

Germany

www.weidmueller.com

## Accessories

## Cover



The special die-cast alloy and the multi-layered surface sealing provide complete protection for the HDC housings.

The cleverly designed interlock system is manufactured from stainless steel. This guarantees a long lifespan with high resistance to corrosion and impact.

The housing interlock system provides integrated safety. Our unique, patented spring system provides the housing interlock with a secure grip and prevents accidental opening.

The laser marking allows for easy and quick identification. Each housing is permanently labelled with a laser marking so that each product can be quickly designated and positioned.

Weidmüller RockStar® IP 65 / NEMA Type 4X housings - your first choice for industrial housings with IP 65 protection.

## General ordering data

Type	HDC 07A DMDL 2B0	Version
Order No.	<a href="#">1665770000</a>	HDC enclosures, Size: 1, Protection degree: IP65 (in plugged condition), Cover for lower part of housing, Side-locking clamp on lower side, Standard
GTIN (EAN)	4008190422790	
Qty.	1 pc(s).	
Type	HDC 07A DODL 2B0	Version
Order No.	<a href="#">1665760000</a>	HDC enclosures, Size: 1, Protection degree: IP65 (in plugged condition), Cover for lower part of housing, Side-locking clamp on lower side, Standard
GTIN (EAN)	4008190422783	
Qty.	1 pc(s).	