

**HDC 32B SBU 2M32G****Weidmüller Interface GmbH & Co. KG**

Klingenbergstraße 26

D-32758 Detmold

Germany

[www.weidmueller.com](http://www.weidmueller.com)**IP65**

The special die-cast alloy and the multi-layered surface sealing provide complete protection for the HDC housings.

The cleverly designed interlock system is manufactured from stainless steel. This guarantees a long lifespan with high resistance to corrosion and impact.

The housing interlock system provides integrated safety. Our unique, patented spring system provides the housing interlock with a secure grip and prevents accidental opening.

The laser marking allows for easy and quick identification. Each housing is permanently labelled with a laser marking so that each product can be quickly designated and positioned.

Weidmüller RockStar® IP 65 / NEMA Type 4X housings - your first choice for industrial housings with IP 65 protection.

**General ordering data**

Version	HDC enclosures, Size: 10, Protection degree: IP65 (in plugged condition), Base housing, Side-locking clamp on lower side, Standard, Size of cable entries: M 32
Order No.	<a href="#">1788460000</a>
Type	HDC 32B SBU 2M32G
GTIN (EAN)	4032248205998
Qty.	1 pc(s).

## HDC 32B SBU 2M32G

Weidmüller Interface GmbH &amp; Co. KG

Klingenbergstraße 26

D-32758 Detmold

Germany

www.weidmueller.com

## Technical data

## Dimensions and weights

Depth	139.4 mm	Depth (inches)	5.488 inch
Height	79 mm	Height (inches)	3.11 inch
Width	97 mm	Width (inches)	3.819 inch
Mounting dimension - height	67 mm	Mounting dimension - width	112 mm
Net weight	659 g		

## Temperatures

Limit temperature	-40 °C ... 125 °C
-------------------	-------------------

## Dimensions

Cable entry	w. thread	Height of base B1	5 mm
Height of housing B	79 mm	Hole pitch length A2	112 mm
Total length housing	94 mm	Width base C1	92.5 mm
Width housing C	82.5 mm		

## General data

EMC housings	No	Housing main material	diecast aluminium
Material of locking element	Stainless steel, rust-proof	Protection degree	IP65 (in plugged condition)
Surface finish	Powder coating	Tightening torque	2 Nm

## Version

BG	10	Cable entry	w. thread
Clamp version	Side-locking clamp	Colour (RAL)	RAL 7035
Design	Standard	Design of housing	Base housing
Design of locking system	Side-locking clamp on lower side	Internal thread	M 32
Number of cable entry on top	0	Number of cable entry sideways	2
Sealing	NBR	Size	10
Size of cable entries	M 32	Suitable for ModuPlug®	Yes
Tightening torque	2 Nm	Top part/bottom part/lid	lower part
Type	Base housing		

## Classifications

ETIM 6.0	EC000437	ETIM 7.0	EC000437
ETIM 8.0	EC000437	ETIM 9.0	EC000437
ECLASS 9.0	27-44-02-02	ECLASS 9.1	27-44-02-02
ECLASS 10.0	27-44-02-02	ECLASS 11.0	27-44-02-02
ECLASS 12.0	27-44-02-02	ECLASS 13.0	27-44-02-02
ECLASS 14.0	27-44-02-02		

Substance	Acetone
Chemical resistance	Conditionally resistant
Substance	Drilling oil
Chemical resistance	Resistant
Substance	Diesel
Chemical resistance	Resistant

## HDC 32B SBU 2M32G

Weidmüller Interface GmbH &amp; Co. KG

Klingenbergstraße 26

D-32758 Detmold

Germany

www.weidmueller.com

## Technical data

Substance	Ethyl alcohol
Chemical resistance	Resistant
Substance	Transmission oil
Chemical resistance	Resistant
Substance	Hydraulic oil
Chemical resistance	Resistant
Substance	Coolant
Chemical resistance	Resistant
Substance	Petroleum benzine
Chemical resistance	Resistant
Substance	Sweat
Chemical resistance	Resistant
Substance	Premium gasoline
Chemical resistance	Conditionally resistant
Substance	Water
Chemical resistance	Resistant
Substance	UV
Chemical resistance	Unstable
Substance	Ozone
Chemical resistance	Unstable

## Environmental Product Compliance

REACH SVHC	Lead 7439-92-1 Potassium perfluorobutane sulfonate 29420-49-3
SCIP	e98b2b24-ba23-41bf-8d19-0dda3647412f
Chemical resistance	de.myview.objectmodel.impl.BlockImpl@620f900e de.myview.objectmodel.impl.BlockImpl@46d911c1 de.myview.objectmodel.impl.BlockImpl@69c455c9 de.myview.objectmodel.impl.BlockImpl@d1fec4e de.myview.objectmodel.impl.BlockImpl@130e8203 de.myview.objectmodel.impl.BlockImpl@1d57deba de.myview.objectmodel.impl.BlockImpl@5676bac4 de.myview.objectmodel.impl.BlockImpl@24f941d8 de.myview.objectmodel.impl.BlockImpl@4300c1de de.myview.objectmodel.impl.BlockImpl@6081750a de.myview.objectmodel.impl.BlockImpl@3425344 de.myview.objectmodel.impl.BlockImpl@6d5b3575 de.myview.objectmodel.impl.BlockImpl@28900731
RoHS Compliance Status	Compliant with exemption
RoHS Exemption (if applicable/known)	6bl

## Approvals

Approvals



ROHS	Conform
UL File Number Search	UL Website
Certificate No. (cURus)	E92202

## HDC 32B SBU 2M32G

**Weidmüller Interface GmbH & Co. KG**  
Klingenbergstraße 26  
D-32758 Detmold  
Germany

[www.weidmueller.com](http://www.weidmueller.com)

## Technical data

### Downloads

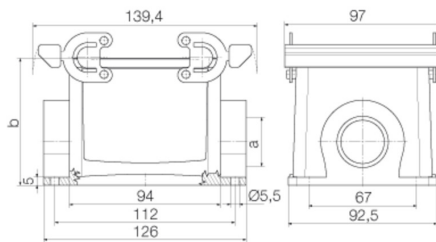
Engineering Data	<a href="#">CAD data – STEP</a>
Product Change Notification	<a href="#">20220214 Technical change to HDC housings</a> <a href="#">20220214 Technische Änderung bei HDC-Gehäusen</a>
Technical Documentation	<a href="#">1788460000 HDC_32B_SBU_2M32G_STP_Blatt_1.pdf</a>
Catalogues	<a href="#">Catalogues in PDF-format</a>
Brochures	<a href="#">CAT 3 HDC 17/18 EN</a> <a href="#">FL FIELDWIRING EN</a>

### HDC 32B SBU 2M32G

**Weidmüller Interface GmbH & Co. KG**  
Klingenbergstraße 26  
D-32758 Detmold  
Germany

[www.weidmueller.com](http://www.weidmueller.com)

## Drawings



**HDC 32B SBU 2M32G****Weidmüller Interface GmbH & Co. KG**

Klingenbergstraße 26

D-32758 Detmold

Germany

[www.weidmueller.com](http://www.weidmueller.com)**Accessories****Housing, cable entry sideways**

The special die-cast alloy and the multi-layered surface sealing provide complete protection for the HDC housings.

The cleverly designed interlock system is manufactured from stainless steel. This guarantees a long lifespan with high resistance to corrosion and impact.

The housing interlock system provides integrated safety. Our unique, patented spring system provides the housing interlock with a secure grip and prevents accidental opening.

The laser marking allows for easy and quick identification. Each housing is permanently labelled with a laser marking so that each product can be quickly designated and positioned.

Weidmüller RockStar® IP 65 / NEMA Type 4X housings - your first choice for industrial housings with IP 65 protection.

**General ordering data**

Type	HDC 32B TSB 1M32G	Version
Order No.	<a href="#">1788400000</a>	HDC enclosures, Size: 10, Protection degree: IP65 (in plugged condition), Cable entry from side, Plug housing, Side-locking clamp on lower side, Standard, Size of cable entries: M 32
GTIN (EAN)	4032248205936	
Qty.	1 pc(s).	
Type	HDC 32B TSB 1PG29G	Version
Order No.	<a href="#">1666840000</a>	HDC enclosures, Size: 10, Protection degree: IP65 (in plugged condition), Cable entry from side, Plug housing, Side-locking clamp on lower side, Standard, Size of cable entries: PG 29
GTIN (EAN)	4008190424046	
Qty.	1 pc(s).	

## HDC 32B SBU 2M32G

Weidmüller Interface GmbH &amp; Co. KG

Klingenbergstraße 26

D-32758 Detmold

Germany

www.weidmueller.com

## Accessories

## Cover



The special die-cast alloy and the multi-layered surface sealing provide complete protection for the HDC housings.

The cleverly designed interlock system is manufactured from stainless steel. This guarantees a long lifespan with high resistance to corrosion and impact.

The housing interlock system provides integrated safety. Our unique, patented spring system provides the housing interlock with a secure grip and prevents accidental opening.

The laser marking allows for easy and quick identification. Each housing is permanently labelled with a laser marking so that each product can be quickly designated and positioned.

Weidmüller RockStar® IP 65 / NEMA Type 4X housings - your first choice for industrial housings with IP 65 protection.

## General ordering data

Type	HDC 32B DODQ 4B0	Version
Order No.	<a href="#">1165790000</a>	HDC enclosures, Size: 10, Protection degree: IP65 (in plugged condition), Cover for lower part of housing, Side-locking clamp on lower side, Standard
GTIN (EAN)	4032248964512	
Qty.	1 pc(s).	

## Housing, cable entry at top



The special die-cast alloy and the multi-layered surface sealing provide complete protection for the HDC housings.

The cleverly designed interlock system is manufactured from stainless steel. This guarantees a long lifespan with high resistance to corrosion and impact.

The housing interlock system provides integrated safety. Our unique, patented spring system provides the housing interlock with a secure grip and prevents accidental opening.

The laser marking allows for easy and quick identification. Each housing is permanently labelled with a laser marking so that each product can be quickly designated and positioned.

Weidmüller RockStar® IP 65 / NEMA Type 4X housings - your first choice for industrial housings with IP 65 protection.

## General ordering data

Type	HDC 32B TOBU 1M40G	Version
Order No.	<a href="#">1221070000</a>	HDC enclosures, Size: 10, Protection degree: IP65 (in plugged condition), Plug housing, Cable entry from top, Side-locking clamp on lower side, Standard, Size of cable entries: M 40
GTIN (EAN)	4032248998180	
Qty.	1 pc(s).	
Type	HDC 32B TOBU 1M32G	Version
Order No.	<a href="#">1788430000</a>	HDC enclosures, Size: 10, Protection degree: IP65 (in plugged condition), Cable entry from top, Plug housing, Side-locking clamp on lower side, Standard, Size of cable entries: M 32
GTIN (EAN)	4032248205967	
Qty.	1 pc(s).	

**HDC 32B SBU 2M32G****Weidmüller Interface GmbH & Co. KG**

Klingenbergstraße 26

D-32758 Detmold

Germany

[www.weidmueller.com](http://www.weidmueller.com)**Accessories**

Type	HDC 32B TOBU 1PG29G	Version
Order No.	<a href="#">1666870000</a>	HDC enclosures, Size: 10, Protection degree: IP65 (in plugged
GTIN (EAN)	4008190424077	condition), Cable entry from top, Plug housing, Side-locking clamp on
Qty.	1 pc(s).	lower side, Standard, Size of cable entries: PG 29