

HDC 32A TOBU 1M32G**Weidmüller Interface GmbH & Co. KG**

Klingenbergstraße 26

D-32758 Detmold

Germany

www.weidmueller.com**IP65**

The special die-cast alloy and the multi-layered surface sealing provide complete protection for the HDC housings.

The cleverly designed interlock system is manufactured from stainless steel. This guarantees a long lifespan with high resistance to corrosion and impact.

The housing interlock system provides integrated safety. Our unique, patented spring system provides the housing interlock with a secure grip and prevents accidental opening.

The laser marking allows for easy and quick identification. Each housing is permanently labelled with a laser marking so that each product can be quickly designated and positioned.

Weidmüller RockStar® IP 65 / NEMA Type 4X housings - your first choice for industrial housings with IP 65 protection.

General ordering data

Version	HDC enclosures, Size: 7, Protection degree: IP65 (in plugged condition), Cable entry from top, Plug housing, Side-locking clamp on lower side, Standard, Size of cable entries: M 32
Order No.	1787990000
Type	HDC 32A TOBU 1M32G
GTIN (EAN)	4032248205431
Qty.	1 pc(s).

HDC 32A TOBU 1M32G

Weidmüller Interface GmbH & Co. KG

Klingenbergstraße 26

D-32758 Detmold

Germany

www.weidmueller.com

Technical data

Dimensions and weights

Depth	82 mm	Depth (inches)	3.228 inch
Height	75 mm	Height (inches)	2.953 inch
Width	71.5 mm	Width (inches)	2.815 inch
Net weight	257 g		

Temperatures

Limit temperature	-40 °C ... 125 °C
-------------------	-------------------

Dimensions

Cable entry	w. thread	Height of housing B	77 mm
Total length housing	82 mm	Width housing C	56 mm

General data

EMC housings	No	Housing main material	diecast aluminium
Material of locking element	Stainless steel, rust-proof	Protection degree	IP65 (in plugged condition)
Surface finish	Powder coating	Tightening torque	1.2 Nm

Version

BG	7	Cable entry	w. thread
Clamp version	Side-locking clamp	Colour (RAL)	RAL 7035
Design	Standard	Design of housing	Cable entry from top, Plug housing
Design of locking system	Side-locking clamp on lower side	Internal thread	M 32
Number of cable entry on top	1	Number of cable entry sideways	0
Size	7	Size of cable entries	M 32
Suitable for ModuPlug®	No	Tightening torque	1.2 Nm
Top part/bottom part/lid	upper part	Type	Plug

Classifications

ETIM 6.0	EC000437	ETIM 7.0	EC000437
ETIM 8.0	EC000437	ETIM 9.0	EC000437
ECLASS 9.0	27-44-02-02	ECLASS 9.1	27-44-02-02
ECLASS 10.0	27-44-02-02	ECLASS 11.0	27-44-02-02
ECLASS 12.0	27-44-02-02	ECLASS 13.0	27-44-02-02

Substance	Acetone
Chemical resistance	Conditionally resistant
Substance	Drilling oil
Chemical resistance	Resistant
Substance	Diesel
Chemical resistance	Resistant
Substance	Ethyl alcohol
Chemical resistance	Resistant
Substance	Transmission oil

HDC 32A TOBU 1M32G**Weidmüller Interface GmbH & Co. KG**

Klingenbergstraße 26

D-32758 Detmold

Germany

www.weidmueller.com**Technical data**

Chemical resistance	Resistant
Substance	Hydraulic oil
Chemical resistance	Resistant
Substance	Coolant
Chemical resistance	Resistant
Substance	Petroleum benzine
Chemical resistance	Resistant
Substance	Sweat
Chemical resistance	Resistant
Substance	Premium gasoline
Chemical resistance	Conditionally resistant
Substance	Water
Chemical resistance	Resistant
Substance	UV
Chemical resistance	Unstable
Substance	Ozone
Chemical resistance	Unstable

Environmental Product Compliance

REACH SVHC	Lead 7439-92-1
SCIP	d447edfa-0214-4f34-b5ba-82eae491b46a
Chemical resistance	de.myview.objectmodel.impl.BlockImpl@b76871b de.myview.objectmodel.impl.BlockImpl@7f404f1d de.myview.objectmodel.impl.BlockImpl@4ff595fc de.myview.objectmodel.impl.BlockImpl@471f140d de.myview.objectmodel.impl.BlockImpl@786e1daa de.myview.objectmodel.impl.BlockImpl@5ab9d1d de.myview.objectmodel.impl.BlockImpl@6692b221 de.myview.objectmodel.impl.BlockImpl@59127d82 de.myview.objectmodel.impl.BlockImpl@5119b847 de.myview.objectmodel.impl.BlockImpl@803940c de.myview.objectmodel.impl.BlockImpl@7bf33c97 de.myview.objectmodel.impl.BlockImpl@31c7a006 de.myview.objectmodel.impl.BlockImpl@2d00edf9

Approvals

Approvals



ROHS	Conform
UL File Number Search	UL Website
Certificate No. (cURus)	E92202

HDC 32A TOBU 1M32G

Weidmüller Interface GmbH & Co. KG
Klingenbergstraße 26
D-32758 Detmold
Germany

www.weidmueller.com

Technical data

Downloads

Approval/Certificate/Document of Con-
formity

[Manufacturer's declaration](#)

Engineering Data

[CAD data – STEP](#)

Product Change Notification

[20220214 Technical change to HDC housings](#)
[20220214 Technische Änderung bei HDC-Gehäusen](#)

Technical Documentation

[1787990000 HDC_32A_TOBU_1M32G_STP_Blatt_1.pdf](#)

Catalogues

[Catalogues in PDF-format](#)

Brochures

[FL FIELDWIRING EN](#)
[FL FIELDWIRING EN](#)

HDC 32A TOBU 1M32G

Weidmüller Interface GmbH & Co. KG

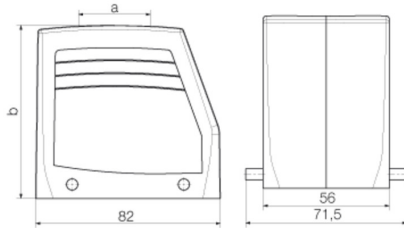
Klingenbergstraße 26

D-32758 Detmold

Germany

www.weidmueller.com

Drawings



HDC 32A TOBU 1M32G**Weidmüller Interface GmbH & Co. KG**

Klingenbergstraße 26

D-32758 Detmold

Germany

www.weidmueller.com**Accessories****Cover**

The special die-cast alloy and the multi-layered surface sealing provide complete protection for the HDC housings.

The cleverly designed interlock system is manufactured from stainless steel. This guarantees a long lifespan with high resistance to corrosion and impact.

The housing interlock system provides integrated safety. Our unique, patented spring system provides the housing interlock with a secure grip and prevents accidental opening.

The laser marking allows for easy and quick identification. Each housing is permanently labelled with a laser marking so that each product can be quickly designated and positioned.

Weidmüller RockStar® IP 65 / NEMA Type 4X housings - your first choice for industrial housings with IP 65 protection.

General ordering data

Type	HDC 32A DMDQ 2QB	Version
Order No.	1665930000	HDC enclosures, Size: 7, Protection degree: IP65 (in plugged condition), Cover for upper part of housing, Side-locking clamp on lower side, Standard
GTIN (EAN)	4008190422967	
Qty.	1 pc(s).	