

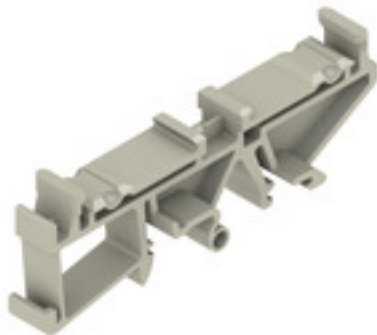
**RF 180 GR****Weidmüller Interface GmbH & Co. KG**

Klingenbergstraße 26

D-32758 Detmold

Germany

www.weidmueller.com

**Flexible - More flexible - Profilform**

Modular housings in profile form - the flexible modular system comprising coloured and transparent plastic profiles and carrier modules

The combination of standard pitches mounted side by side in any arrangement and metre goods cut accurate to the millimetre creates the perfect balance between flexibility and economic efficiency:

- Pitch profiles with standard widths ranging from 5mm to 45mm allow the mounting of all standard PCB formats.
- Variable heights ensure maximum component density, even with larger electronics components.
- The different installation variations mean that mounting the enclosure directly is as easy as clipping components onto the terminal rail
- Solid hoods protect the module reliably from external influences

The recipe for success: variable profile + modular form components = flexible enclosure concept that offers a large surface area for the PCBs.

The modular concept is designed for modules with high space requirements and suitable for small component quantities and different widths.

**General ordering data**

Version	Mounting rail housing Pebble grey, Clip-in foot for RS 80/90/100, Width: 17.5 mm
Order No.	<a href="#">1773400000</a>
Type	RF 180 GR
GTIN (EAN)	4032248140602
Qty.	20 pc(s).

**RF 180 GR****Weidmüller Interface GmbH & Co. KG**

Klingenbergstraße 26

D-32758 Detmold

Germany

[www.weidmueller.com](http://www.weidmueller.com)**Technical data****Dimensions and weights**

Depth	26.6 mm	Depth (inches)	1.047 inch
Height	79.2 mm	Height (inches)	3.118 inch
Width	17.5 mm	Width (inches)	0.689 inch
Net weight	6.15 g		

**Temperatures**

Operating temperature range	-50 °C ... 100 °C
-----------------------------	-------------------

**Material data**

Insulating material	PA 66	UL 94 flammability rating	V-2
---------------------	-------	---------------------------	-----

**General data**

Colour	Pebble grey	Colour chart (similar)	RAL 7032
Encapsulation option	No	Protection degree	IP20, IP00
Rail	TS 32, TS 35		

**Classifications**

ETIM 7.0	EC002779	ETIM 8.0	EC002779
ETIM 9.0	EC002779	ECLASS 11.0	27-18-27-92
ECLASS 12.0	27-18-27-92	ECLASS 13.0	27-19-06-05
ECLASS 14.0	27-19-06-05		

**Environmental Product Compliance**

REACH SVHC	/
RoHS Compliance Status	Compliant without exemption

**Approvals**

ROHS	Conform
------	---------

**Downloads**

Engineering Data	<a href="#">CAD data – STEP</a>
Catalogues	<a href="#">Catalogues in PDF-format</a>
Brochures	<a href="#">FL ANALO.SIGN.CONV. EN</a> <a href="#">MB DEVICE MANUF. EN</a> <a href="#">FL MACHINE SAFETY EN</a> <a href="#">FL 72H SAMPLE SER EN</a> <a href="#">PO OMNIMATE EN</a> <a href="#">PO OMNIMATE EN</a>