

SAI-4-F 4P IDC PUR 5M**Weidmüller Interface GmbH & Co. KG**

Klingenbergstraße 26

D-32758 Detmold

Germany

www.weidmueller.com

- The compact IDC system cuts production, installation and maintenance work.
- Knurled metal nuts ensure sturdy, secure handling with little effort.
- The IDC distributors have the same dimensions as the standard SAI distributors. They are compatible with the standard SAI distributors.
- 3-pole version with 1 I/O signal per slot and 4-pole version with 2 I/O signals per slot,
- individual assembly of the sensor/actuator cables on the spot,
- reliable and fast connection thanks to IDC connecting element,
- IP67 class of protection.

General ordering data

| | |
|------------|---------------------------------------------------------------------------------------------------|
| Version | Fixed cable version, IDC, M12, 30 V, A-coded, LED: Yes, LED initiator: Yes, Wiring type: PNP, 5 m |
| Order No. | 1766660000 |
| Type | SAI-4-F 4P IDC PUR 5M |
| GTIN (EAN) | 4032248107384 |
| Qty. | 1 pc(s). |

SAI-4-F 4P IDC PUR 5M

Weidmüller Interface GmbH & Co. KG

Klingenbergstraße 26

D-32758 Detmold

Germany

www.weidmueller.com

Technical data

Dimensions and weights

| | | | |
|------------|--------|-----------------|------------|
| Depth | 102 mm | Depth (inches) | 4.016 inch |
| Height | 25 mm | Height (inches) | 0.984 inch |
| Width | 60 mm | Width (inches) | 2.362 inch |
| Net weight | 524 g | | |

Temperatures

| | |
|-----------------------|------------|
| Operating temperature | -20 - 80°C |
|-----------------------|------------|

Connection data

| | | | |
|----------------------------------------|--------|----------------------------|--------------------------|
| Conductor O.D., min. | 1.2 mm | Sheathing stripping length | 15 mm |
| max. connection of equal cross-section | 10 | Distributor outlet | Fixed cable version, IDC |

Electrical data

| | | | |
|--------------------------------|------|-----------------------------------------|-------------------|
| Rated voltage, min. | 10 V | Rated voltage, max. | 30 V |
| Test voltage | 1 kV | Max. current-carrying capacity per slot | 4 A |
| Total current | 9 A | Current per signal | 2 A |
| Electrical isolation available | No | Insulation strength | 10 ⁹ Ω |

General technical data

| | | | |
|-----------------------------|---------|-------------------------------------|-------|
| Plug-in station coding | A-coded | Protection degree | IP67 |
| Number of poles | 4 | Number of contact sockets | 4 |
| Connection thread | M12 | Pollution severity | 2 |
| Fire behaviour | V-0 | LED | Yes |
| LED initiator | Yes | LED colour for indicating operation | green |
| LED colour for I/O function | yellow | | |

Material data

| | | | |
|--------------------------|----------------|-------------------------|--------------------|
| Housing main material | Pocan | Material of distributor | Plastic |
| Housing colour | grey, RAL 7032 | Screw socket | Nickel-plated CuZn |
| Contact material | CuZn | Contact surface | Gold-plated |
| Contact carrier material | PBT (UL 94 V0) | | |

Technical data cable

| | | | |
|-----------------------------------|------------------------------------------------------------------------------------------------|------------------------------|---------------------|
| Bending cycles | 2 Mio | Bending radius, min., moving | 10 x cable diameter |
| Colour coding | blue, brown, brown / green, yellow, grey, grey / pink, green, red / blue, white, white / green | Conductor O.D., min. | 1.2 mm |
| Halogen | No | Number of poles | 4 |
| O.D. | 7.4 mm | Sheath material | PUR |
| Sheathing colour | black | Shielded | No |
| Wire cross section (Print/Online) | 8 x 0.34 mm ² + 2 x 0.75 mm ² | Cable length | 5 m |
| Suitable for cable carriers | Yes | | |

SAI-4-F 4P IDC PUR 5M

Weidmüller Interface GmbH & Co. KG

Klingenbergstraße 26

D-32758 Detmold

Germany

www.weidmueller.com

Technical data

Classifications

| | | | |
|-------------|-------------|-------------|-------------|
| ETIM 6.0 | EC002585 | ETIM 7.0 | EC002585 |
| ETIM 8.0 | EC002585 | ETIM 9.0 | EC002585 |
| ECLASS 9.0 | 27-44-01-08 | ECLASS 9.1 | 27-44-01-08 |
| ECLASS 10.0 | 27-44-01-08 | ECLASS 11.0 | 27-44-01-08 |
| ECLASS 12.0 | 27-44-01-08 | ECLASS 13.0 | 27-44-01-08 |
| ECLASS 14.0 | 27-44-01-08 | | |

Environmental Product Compliance

| | |
|------------------------|--------------------------------------|
| REACH SVHC | Lead 7439-92-1 |
| SCIP | 4060c755-8d0b-4d43-bdb3-4ffabe9d7497 |
| RoHS Compliance Status | Compliant |

Approvals

Approvals



| | |
|-------------------------|------------|
| ROHS | Conform |
| UL File Number Search | UL Website |
| Certificate No. (cURus) | E141197 |

Downloads

| | |
|------------------|------------------------------------------------------------------------|
| Engineering Data | CAD data – STEP |
| Catalogues | Catalogues in PDF-format |
| Brochures | FL FIELDWIRING EN FL FIELDWIRING EN |

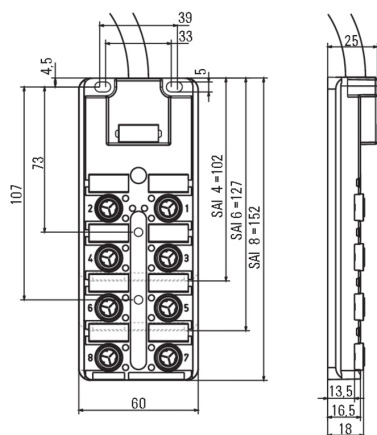
SAI-4-F 4P IDC PUR 5M

Weidmüller Interface GmbH & Co. KG
Klingenbergstraße 26
D-32758 Detmold
Germany

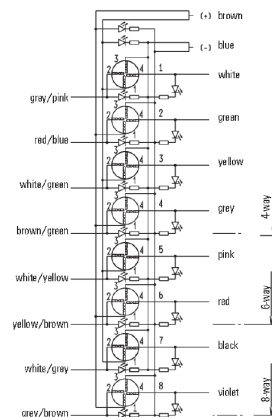
www.weidmueller.com

Drawings

Dimensioned drawing



Wiring diagram



SAI-4-F 4P IDC PUR 5M

Weidmüller Interface GmbH & Co. KG

Klingenbergstraße 26

D-32758 Detmold

Germany

www.weidmueller.com

Accessories

Screwty® cable gland tool with torque function



The ideal tool for any application

Screwty® is the ideal, all-purpose tool for tightening all common sensor and actuator cables. Even difficult-to-reach round plugs are accessible using the Screwty®. A simple turning movement tightens and loosens the connectors without the need for excessive force. The Screwty® is a unique and global solution since it fits with most cables and plugs from other vendors (over 90 %). The Screwty® consists of a handle with a conventional 1/4" adapter. Thus it can be used for all sizes: for M12 and M8 round plug-in connectors, and for M12F and M8F customisable plugs and sockets, as well as for all M23 plugs and sockets.

General ordering data

| Type | SCREWTY SET -DM | Version | Packaging |
|------------|----------------------------|---------------------------------------------------|-----------|
| Order No. | 1920000000 | Cable gland tool for M8, M12 lines and connectors | Cardboard |
| GTIN (EAN) | 4032248436859 | | box |
| Qty. | 1 pc(s). | | |

M12



Protective caps protect unassigned plug-in stations against external influences.

General ordering data

| Type | SAI-SK-M12 | Version |
|------------|----------------------------|------------------------------------------------|
| Order No. | 9456050000 | Protected component assemblies, Protective cap |
| GTIN (EAN) | 4008190304058 | |
| Qty. | 30 pc(s). | |

SAI-4-F 4P IDC PUR 5M

Weidmüller Interface GmbH & Co. KG

Klingenbergstraße 26

D-32758 Detmold

Germany

www.weidmueller.com

Accessories

Blank



ESG is the tried-and-tested marker in MultiCard format for use on many well-known electrical devices. The result is high-quality device marking with a high-contrast appearance.

Various types are available for devices from manufacturers like Siemens, ABB, Beckhoff etc.

Advantages at a glance:

- Tags for universal usage, self-adhesive or clip-on tags, depending on type
- For aligned equipment, e.g. circuit breakers, we supply ESG markers for clipping onto tag rails
- Individual laser-quality printing according to specifications

For custom printing: Please send us a file of our labeling software M-Print PRO or M-Print PRO Online (without installation) for your labeling specifications.

General ordering data

| | | |
|------------|----------------------------|--------------------------------------------------------------|
| Type | ESG 9/20 MC NE WS | Version |
| Order No. | 1609940000 | ESG, Device markers x 20 mm, PA 66, Colour: white, pluggable |
| GTIN (EAN) | 4008190203528 | |
| Qty. | 200 pc(s). | |

Insulation displacement connection



Individual cable lengths are often required nowadays. In order to meet these demands, Weidmüller offers a wide range of plug-in connectors for custom assembly. Male plugs and female socket for customisable assembly for M8, M12, M16 and 7/8" connections which are highly robust and ideally suited to machine engineering, for instance. The M12 plug-in connectors offer a choice of 5 different connection systems.

The IDC is simple and quick to assemble since this technology allows the conductor to be inserted directly into the terminal point, without crimping or having to strip the insulation. It also has excellent functional security.

General ordering data

| | | |
|------------|----------------------------|------------------------------------------------|
| Type | SAI-SA-4-IDC | Version |
| Order No. | 1766810000 | Field attachable connector, M12, pin, straight |
| GTIN (EAN) | 4032248148233 | |
| Qty. | 1 pc(s). | |