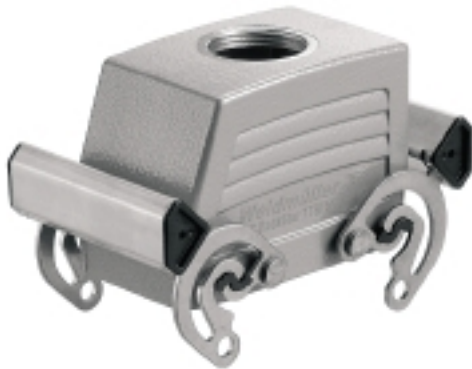


HDC 24D TOBO 1PG29G**Weidmüller Interface GmbH & Co. KG**

Klingenbergstraße 26

D-32758 Detmold

Germany

www.weidmueller.com**IP65**

The special die-cast alloy and the multi-layered surface sealing provide complete protection for the HDC housings.

The cleverly designed interlock system is manufactured from stainless steel. This guarantees a long lifespan with high resistance to corrosion and impact.

The housing interlock system provides integrated safety. Our unique, patented spring system provides the housing interlock with a secure grip and prevents accidental opening.

The laser marking allows for easy and quick identification. Each housing is permanently labelled with a laser marking so that each product can be quickly designated and positioned.

Weidmüller RockStar® IP 65 / NEMA Type 4X housings - your first choice for industrial housings with IP 65 protection.

General ordering data

Version	HDC enclosures, Size: 4, Protection degree: IP65 (in plugged condition), Cable entry from top, Plug housing, Side-locking clamp on upper side, high, Size of cable entries: PG 29
Order No.	1654920000
Type	HDC 24D TOBO 1PG29G
GTIN (EAN)	4008190407926
Qty.	1 pc(s).

HDC 24D TOBO 1PG29G

Weidmüller Interface GmbH & Co. KG

Klingenbergstraße 26

D-32758 Detmold

Germany

www.weidmueller.com

Technical data

Dimensions and weights

Height	72 mm	Height (inches)	2.835 inch
Width	55 mm	Width (inches)	2.165 inch
Net weight	245 g		

Temperatures

Limit temperature	-40 °C ... 125 °C
-------------------	-------------------

Dimensions

Cable entry	w. thread	Height of housing B	72 mm
Total length housing	73 mm	Width housing C	43 mm

General data

EMC housings	No	Housing main material	diecast aluminium
Material of locking element		Protection degree	IP65 (in plugged condition)
Surface finish	Stainless steel, rust-proof		
	Powder coating		

Version

BG	4	Cable entry	w. thread
Clamp version	Side-locking clamp	Colour (RAL)	RAL 7035
Design		Design of housing	Cable entry from top, Plug housing
	high		
Design of locking system	Side-locking clamp on upper side	Internal thread	PG 29
Number of cable entry on top	1	Number of cable entry sideways	0
Size	4	Size of cable entries	PG 29
Suitable for ModuPlug®	Yes	Top part/bottom part/lid	upper part
Type	Plug		

Classifications

ETIM 6.0	EC000437	ETIM 7.0	EC000437
ETIM 8.0	EC000437	ETIM 9.0	EC000437
ECLASS 9.0	27-44-02-02	ECLASS 9.1	27-44-02-02
ECLASS 10.0	27-44-02-02	ECLASS 11.0	27-44-02-02
ECLASS 12.0	27-44-02-02	ECLASS 13.0	27-44-02-02

Substance	Acetone
Chemical resistance	Conditionally resistant
Substance	Drilling oil
Chemical resistance	Resistant
Substance	Diesel
Chemical resistance	Resistant
Substance	Ethyl alcohol
Chemical resistance	Resistant
Substance	Transmission oil
Chemical resistance	Resistant

Creation date July 25, 2024 2:12:11 AM CEST

HDC 24D TOBO 1PG29G**Weidmüller Interface GmbH & Co. KG**

Klingenbergstraße 26

D-32758 Detmold

Germany

www.weidmueller.com**Technical data**

Substance	Hydraulic oil
Chemical resistance	Resistant
Substance	Coolant
Chemical resistance	Resistant
Substance	Petroleum benzine
Chemical resistance	Resistant
Substance	Sweat
Chemical resistance	Resistant
Substance	Premium gasoline
Chemical resistance	Conditionally resistant
Substance	Water
Chemical resistance	Resistant
Substance	UV
Chemical resistance	Unstable
Substance	Ozone
Chemical resistance	Unstable

Environmental Product Compliance

REACH SVHC	Lead 7439-92-1 Potassium perfluorobutane sulfonate 29420-49-3
SCIP	e98b2b24-ba23-41bf-8d19-Odda3647412f
Chemical resistance	de.myview.objectmodel.impl.BlockImpl@448e374d de.myview.objectmodel.impl.BlockImpl@1e6cf335 de.myview.objectmodel.impl.BlockImpl@2ec63a3d de.myview.objectmodel.impl.BlockImpl@4ee77929 de.myview.objectmodel.impl.BlockImpl@7b660be7 de.myview.objectmodel.impl.BlockImpl@2eaaae5 de.myview.objectmodel.impl.BlockImpl@1d626f57 de.myview.objectmodel.impl.BlockImpl@68b963e3 de.myview.objectmodel.impl.BlockImpl@23cb6420 de.myview.objectmodel.impl.BlockImpl@74215f3e de.myview.objectmodel.impl.BlockImpl@7ab79e3a de.myview.objectmodel.impl.BlockImpl@59b25cf4 de.myview.objectmodel.impl.BlockImpl@2120d986
RoHS Compliance Status	Compliant with exemption
RoHS Exemption (if applicable/known)	6bl

Approvals

Approvals



ROHS	Conform
UL File Number Search	UL Website
Certificate No. (cURus)	E92202

HDC 24D TOBO 1PG29G

Weidmüller Interface GmbH & Co. KG
Klingenbergstraße 26
D-32758 Detmold
Germany

www.weidmueller.com

Technical data

Downloads

Approval/Certificate/Document of Con-
formity

[Manufacturer's declaration](#)

Engineering Data

[CAD data – STEP](#)

Product Change Notification

[20220214 Technical change to HDC housings](#)

[20220214 Technische Änderung bei HDC-Gehäusen](#)

Technical Documentation

[1654920000 HDC 24D TOBO 1PG29G STP Blatt 1.pdf](#)

Catalogues

[Catalogues in PDF-format](#)

Brochures

[FL FIELDWIRING EN](#)

[FL FIELDWIRING EN](#)

HDC 24D TOBO 1PG29G

Weidmüller Interface GmbH & Co. KG

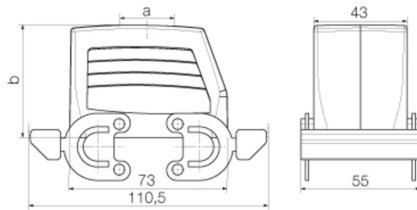
Klingenbergstraße 26

D-32758 Detmold

Germany

www.weidmueller.com

Drawings



HDC 24D TOBO 1PG29G**Weidmüller Interface GmbH & Co. KG**

Klingenbergstraße 26

D-32758 Detmold

Germany

www.weidmueller.com**Accessories****Cover**

The special die-cast alloy and the multi-layered surface sealing provide complete protection for the HDC housings.

The cleverly designed interlock system is manufactured from stainless steel. This guarantees a long lifespan with high resistance to corrosion and impact.

The housing interlock system provides integrated safety. Our unique, patented spring system provides the housing interlock with a secure grip and prevents accidental opening.

The laser marking allows for easy and quick identification. Each housing is permanently labelled with a laser marking so that each product can be quickly designated and positioned.

Weidmüller RockStar® IP 65 / NEMA Type 4X housings - your first choice for industrial housings with IP 65 protection.

General ordering data

Type	HDC 10B DMDQ 4BO	Version
Order No.	1665250000	HDC enclosures, Size: 4, Protection degree: IP65 (in plugged condition), Cover for upper part of housing, Side-locking clamp on upper side, Standard
GTIN (EAN)	4008190421953	
Qty.	1 pc(s).	