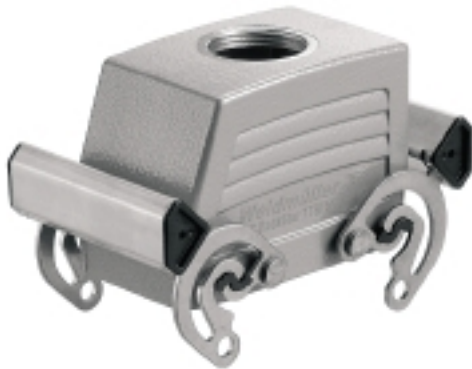


HDC 10B TOBO 1PG16G**Weidmüller Interface GmbH & Co. KG**

Klingenbergstraße 26

D-32758 Detmold

Germany

www.weidmueller.com**IP65**

The special die-cast alloy and the multi-layered surface sealing provide complete protection for the HDC housings.

The cleverly designed interlock system is manufactured from stainless steel. This guarantees a long lifespan with high resistance to corrosion and impact.

The housing interlock system provides integrated safety. Our unique, patented spring system provides the housing interlock with a secure grip and prevents accidental opening.

The laser marking allows for easy and quick identification. Each housing is permanently labelled with a laser marking so that each product can be quickly designated and positioned.

Weidmüller RockStar® IP 65 / NEMA Type 4X housings - your first choice for industrial housings with IP 65 protection.

General ordering data

Version	HDC enclosures, Size: 4, Protection degree: IP65 (in plugged condition), Cable entry from top, Plug housing, Side-locking clamp on upper side, Standard, Size of cable entries: PG 16
Order No.	1654860000
Type	HDC 10B TOBO 1PG16G
GTIN (EAN)	4008190407865
Qty.	1 pc(s).

HDC 10B TOBO 1PG16G

Weidmüller Interface GmbH & Co. KG

Klingenbergstraße 26

D-32758 Detmold

Germany

www.weidmueller.com

Technical data

Dimensions and weights

Height	52 mm	Height (inches)	2.047 inch
Width	55 mm	Width (inches)	2.165 inch
Net weight	203 g		

Temperatures

Limit temperature	-40 °C ... 125 °C
-------------------	-------------------

Dimensions

Cable entry	w. thread	Height of housing B	52 mm
Total length housing	73 mm	Width housing C	43 mm

General data

EMC housings	No	Housing main material	diecast aluminium
Material of locking element		Protection degree	IP65 (in plugged condition)
Surface finish	Stainless steel, rust-proof		
	Powder coating		

Version

BG	4	Cable entry	w. thread
Clamp version	Side-locking clamp	Colour (RAL)	RAL 7035
Design		Design of housing	Cable entry from top, Plug housing
	Standard		
Design of locking system	Side-locking clamp on upper side	Internal thread	PG 16
Number of cable entry on top	1	Number of cable entry sideways	0
Size	4	Size of cable entries	PG 16
Suitable for ModuPlug®	No	Top part/bottom part/lid	upper part
Type	Plug		

Classifications

ETIM 6.0	EC000437	ETIM 7.0	EC000437
ETIM 8.0	EC000437	ETIM 9.0	EC000437
ECLASS 9.0	27-44-02-02	ECLASS 9.1	27-44-02-02
ECLASS 10.0	27-44-02-02	ECLASS 11.0	27-44-02-02
ECLASS 12.0	27-44-02-02	ECLASS 13.0	27-44-02-02

Substance	Acetone
Chemical resistance	Conditionally resistant
Substance	Drilling oil
Chemical resistance	Resistant
Substance	Diesel
Chemical resistance	Resistant
Substance	Ethyl alcohol
Chemical resistance	Resistant
Substance	Transmission oil
Chemical resistance	Resistant

HDC 10B TOBO 1PG16G**Weidmüller Interface GmbH & Co. KG**

Klingenbergstraße 26

D-32758 Detmold

Germany

www.weidmueller.com

Technical data

Substance	Hydraulic oil
Chemical resistance	Resistant
Substance	Coolant
Chemical resistance	Resistant
Substance	Petroleum benzine
Chemical resistance	Resistant
Substance	Sweat
Chemical resistance	Resistant
Substance	Premium gasoline
Chemical resistance	Conditionally resistant
Substance	Water
Chemical resistance	Resistant
Substance	UV
Chemical resistance	Unstable
Substance	Ozone
Chemical resistance	Unstable

Environmental Product Compliance

REACH SVHC	Lead 7439-92-1 Potassium perfluorobutane sulfonate 29420-49-3
SCIP	e98b2b24-ba23-41bf-8d19-Odda3647412f
Chemical resistance	de.myview.objectmodel.impl.BlockImpl@741248eb de.myview.objectmodel.impl.BlockImpl@6700d1d2 de.myview.objectmodel.impl.BlockImpl@388f30b5 de.myview.objectmodel.impl.BlockImpl@53bb476c de.myview.objectmodel.impl.BlockImpl@358808e0 de.myview.objectmodel.impl.BlockImpl@5467c1c2 de.myview.objectmodel.impl.BlockImpl@15ac5963 de.myview.objectmodel.impl.BlockImpl@1ca5ec9d de.myview.objectmodel.impl.BlockImpl@691f28e1 de.myview.objectmodel.impl.BlockImpl@31c9dd1 de.myview.objectmodel.impl.BlockImpl@748cbb90 de.myview.objectmodel.impl.BlockImpl@477e6098 de.myview.objectmodel.impl.BlockImpl@57b600b6

Approvals

Approvals



ROHS	Conform
UL File Number Search	UL Website
Certificate No. (cURus)	E92202

Downloads

Approval/Certificate/Document of Conformity	Manufacturer's declaration
Engineering Data	CAD data – STEP
Product Change Notification	20220214 Technical change to HDC housings 20220214 Technische Änderung bei HDC-Gehäusen
Technical Documentation	1654860000 HDC 10B TOBO 1PG16G_STP_Blatt_1.pdf
Catalogues	Catalogues in PDF-format
Brochures	FL FIELDWIRING EN FL FIELDWIRING EN

Creation date July 4, 2024 5:17:05 PM CEST

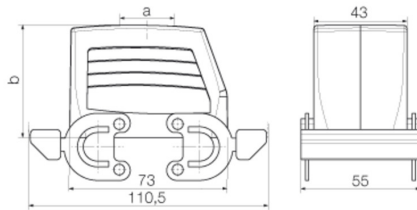
Catalogue status 29.06.2024 / We reserve the right to make technical changes.

HDC 10B TOBO 1PG16G

Weidmüller Interface GmbH & Co. KG
Klingenbergstraße 26
D-32758 Detmold
Germany

www.weidmueller.com

Drawings



HDC 10B TOBO 1PG16G**Weidmüller Interface GmbH & Co. KG**

Klingenbergstraße 26

D-32758 Detmold

Germany

www.weidmueller.com**Accessories****Cover**

The special die-cast alloy and the multi-layered surface sealing provide complete protection for the HDC housings.

The cleverly designed interlock system is manufactured from stainless steel. This guarantees a long lifespan with high resistance to corrosion and impact.

The housing interlock system provides integrated safety. Our unique, patented spring system provides the housing interlock with a secure grip and prevents accidental opening.

The laser marking allows for easy and quick identification. Each housing is permanently labelled with a laser marking so that each product can be quickly designated and positioned.

Weidmüller RockStar® IP 65 / NEMA Type 4X housings - your first choice for industrial housings with IP 65 protection.

General ordering data

Type	HDC 10B DMDQ 4BO	Version
Order No.	1665250000	HDC enclosures, Size: 4, Protection degree: IP65 (in plugged condition), Cover for upper part of housing, Side-locking clamp on upper side, Standard
GTIN (EAN)	4008190421953	
Qty.	1 pc(s).	