

**WKM 18/43****Weidmüller Interface GmbH & Co. KG**

Klingenbergstraße 26

D-32758 Detmold

Germany

[www.weidmueller.com](http://www.weidmueller.com)

The halogen-free, transparent pocket of the WKM offers outstanding protection against environmental influences. Thanks to firm fixation with cable ties, it is suitable for almost all wire cross-sections.

The pre-printed tags are simply inserted into the WKM holder and secured with a clip. WKM cable markers are the right solution for maximum efficiency in on-site marking.

Your advantage when using WKM cables

- Paper and polyester labels can be printed individually with conventional office printers
- The robust design in combination with MultiCard ELS tags guarantees maximum protection against environmental influences

**General ordering data**

Version	WKM, Conductor and cable markers, 7 - 115 mm, 43 x 18 mm, Wire and cable markers, Transparent
Order No.	<a href="#">1610700000</a>
Type	WKM 18/43
GTIN (EAN)	4008190204488
Qty.	50 pc(s).

## WKM 18/43

Weidmüller Interface GmbH &amp; Co. KG

Klingenbergstraße 26

D-32758 Detmold

Germany

www.weidmueller.com

## Technical data

## Dimensions and weights

Depth	3.5 mm	Depth (inches)	0.138 inch
Height	43 mm	Height (inches)	1.693 inch
Width	18 mm	Width (inches)	0.709 inch
Net weight	1.66 g		

## Temperatures

Operating temperature range	-40...80 °C
-----------------------------	-------------

## General data

Application/manufacture	Wire and cable markers	
Colour	Transparent	
Material	Polypropylene	
Number of markers per combination	1 MultiCard = Conductor and cable markers	
Number of markers per packaging unit	Form of supply	MultiCard
Operating temperature range	-40...80 °C	
Operating temperature range, max.	80 °C	
Operating temperature range, min.	-40 °C	
Type of printing	neutral	
UL 94 flammability rating	HB	
Width	18 mm	

## Conductor and cable markers

Conductor O.D.	7 - 115 mm	Conductor O.D., max.	115 mm
Conductor O.D., min.	7 mm	Conductor cross-section, max.	150 mm <sup>2</sup>
Conductor cross-section, min.	16 mm <sup>2</sup>	Cross-section for connected wire	16 - 150 mm <sup>2</sup>

## Classifications

ETIM 6.0	EC001530	ETIM 7.0	EC001530
ETIM 8.0	EC001530	ETIM 9.0	EC001530
ECLASS 9.0	27-40-04-01	ECLASS 9.1	27-40-04-01
ECLASS 10.0	27-40-04-01	ECLASS 11.0	27-28-11-02
ECLASS 12.0	27-28-11-02	ECLASS 13.0	27-28-11-02

## Environmental Product Compliance

REACH SVHC	/
------------	---

## Important note

Product information	For cable ties with a width up to 8.4 mm
---------------------	--

## Approvals

ROHS	Conform
------	---------

## Downloads

Engineering Data	<a href="#">CAD data – STEP</a>
Engineering Data	<a href="#">Zuken E3.S</a>
Catalogues	<a href="#">Catalogues in PDF-format</a>

Creation date July 7, 2024 10:26:54 PM CEST

Catalogue status 29.06.2024 / We reserve the right to make technical changes.

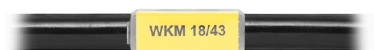
### WKM 18/43

**Weidmüller Interface GmbH & Co. KG**  
Klingenbergstraße 26  
D-32758 Detmold  
Germany

[www.weidmueller.com](http://www.weidmueller.com)

## Drawings

### Example of use



## WKM 18/43

Weidmüller Interface GmbH &amp; Co. KG

Klingenbergstraße 26

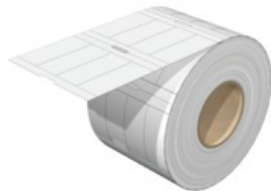
D-32758 Detmold

Germany

www.weidmueller.com

## Accessories

## ELS 16/40



## ELS

ELS tags are special and non-adhesive insertable labels for WKM cable markers or for group tag carriers. The matt, thin but tear-resistant polyester provides very good labelling and excellent readability. Used in combination with water-repellent WKM sleeves, the solution guarantees particularly long-lasting identification of cables even in harsh environments.

## General ordering data

Type	ELS 16/40 MM WS	Version
Order No.	<a href="#">2005200000</a>	ELS, Insert markers, 40 x 16 mm, white
GTIN (EAN)	4050118390056	
Qty.	2,000 pc(s).	
Type	ELS 16/40 MM GE	Version
Order No.	<a href="#">2005260000</a>	ELS, Insert markers, 40 x 16 mm, yellow
GTIN (EAN)	4050118389975	
Qty.	2,000 pc(s).	

## ESO insert tags



## General ordering data

Type	ESO 5 P DIN A4 WS	Version
Order No.	<a href="#">1670370000</a>	Terminal markers, Insert markers, 40 x 16.5 mm, white
GTIN (EAN)	4008190430696	
Qty.	10 pc(s).	
Type	ESO 5 DIN A4 WS	Version
Order No.	<a href="#">1607710000</a>	Terminal markers, Insert markers, 40 x 16.5 mm, white
GTIN (EAN)	4008190206109	
Qty.	10 pc(s).	
Type	ESO 5 P DIN A4 GE	Version
Order No.	<a href="#">1670380000</a>	Terminal markers, Insert markers, 40 x 16.5 mm, yellow
GTIN (EAN)	4008190430702	
Qty.	10 pc(s).	
Type	ESO 5 DIN A4 GE	Version
Order No.	<a href="#">1631350000</a>	Terminal markers, Insert markers, 40 x 16.5 mm, yellow
GTIN (EAN)	4008190206208	
Qty.	10 pc(s).	

**WKM 18/43****Weidmüller Interface GmbH & Co. KG**

Klingenbergstraße 26

D-32758 Detmold

Germany

[www.weidmueller.com](http://www.weidmueller.com)**Accessories****Blank**

ELS MultiCard markers can be printed with a PrintJet, plotter or SMark printer. In particular, colour printing with PrintJet AVANCED allows the eye-catching identification marking of cables and terminal strips in many ways.

ELS 6/30 for use in the WKM 8/30 cable markers or in the EM8/30 group-tag carriers

ELS 7/40 for use in the SchT5S group-tag carriers

ELS 16/40 for use in the WKM 18/43 cable markers or the SchT5 group-tag carriers

**For custom printing:** Please send us a file of our labeling software M-Print PRO or M-Print PRO Online (without installation) for your labeling specifications.

**General ordering data**

Type	ELS 16/40 MC NE GE	Version
Order No.	<a href="#">1045630000</a>	ELS, Insert markers, 40 x 16 mm, yellow
GTIN (EAN)	4032248779628	
Qty.	40 pc(s).	
Type	ELS 16/40 MC NE WS	Version
Order No.	<a href="#">1045620000</a>	ELS, Insert markers, 40 x 16 mm, white
GTIN (EAN)	4032248779611	
Qty.	40 pc(s).	