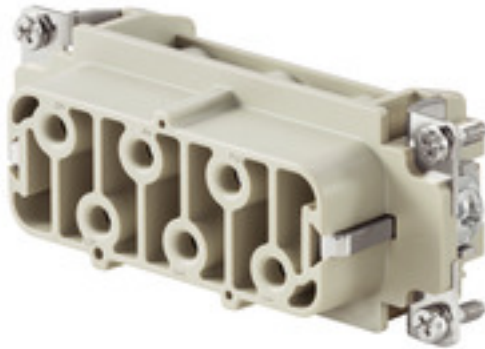


HDC HSB 6 FS 7 - 12**Weidmüller Interface GmbH & Co. KG**

Klingenbergstraße 26

D-32758 Detmold

Germany

www.weidmueller.com

The HSB series enables you to carry 35A per contact simultaneously. Assembly with screw connections, for secure and reliable connections.

The wire connection level is designed for screw connections. All screw connection elements are equipped with wire protection.

Screw connection

General ordering data

| | |
|------------|--|
| Version | HDC insert, Female, 400 V, 35 A, Number of poles: 6, Screw connection, Size: 6 |
| Order No. | 1499000000 |
| Type | HDC HSB 6 FS 7 - 12 |
| GTIN (EAN) | 4008190006082 |
| Qty. | 1 pc(s). |

HDC HSB 6 FS 7 - 12

Weidmüller Interface GmbH & Co. KG

Klingenbergstraße 26

D-32758 Detmold

Germany

www.weidmueller.com

Technical data

Dimensions and weights

| | | | |
|------------|---------|-----------------|------------|
| Depth | 84.5 mm | Depth (inches) | 3.327 inch |
| Height | 35.6 mm | Height (inches) | 1.402 inch |
| Width | 34 mm | Width (inches) | 1.339 inch |
| Net weight | 87 g | | |

Temperatures

| | |
|-------------------|-------------------|
| Limit temperature | -40 °C ... 125 °C |
|-------------------|-------------------|

Dimensions

| | | | |
|------------------|---------|-------------------|---------|
| Height of socket | 35.6 mm | Total length base | 84.5 mm |
| Width | 34 mm | | |

General data

| | | |
|-------------------------------|---|--------|
| BG | 6 | |
| Colour | beige | |
| Conductor cross-section | 6 mm² | |
| Free from halogens | true | |
| Insulating material | PC glass-fibre reinforced (UL-listed and railway-certified) | |
| Insulating material group | IIIa | |
| Insulation strength | 10 ¹⁰ Ω | |
| Low smoke acc. DIN EN 45545-2 | Yes | |
| Material | Copper alloy | |
| Max. torque for main contact | 1.5 Nm | |
| Min. torque for main contact | 1.2 Nm | |
| Number of poles | 6 | |
| Plugging cycles, silver | ≥ 500 | |
| Pollution severity | 3 | |
| Rated current (DIN EN 61984) | 35 A | |
| Rated current (UR) | Wire connection cross section AWG | AWG 10 |
| | Rated current | 35 A |
| | Wire connection cross section AWG | AWG 12 |
| | Rated current | 8 A |
| | Wire connection cross section AWG | AWG 14 |
| | Rated current | 8 A |
| | Wire connection cross section AWG | AWG 16 |
| | Rated current | 8 A |
| | Wire connection cross section AWG | AWG 18 |
| | Rated current | 8 A |
| | Wire connection cross section AWG | AWG 20 |
| | Rated current | 8 A |

HDC HSB 6 FS 7 - 12

Weidmüller Interface GmbH & Co. KG

Klingenbergstraße 26

D-32758 Detmold

Germany

www.weidmueller.com

Technical data

| | | |
|--------------------------------------|-----------------------------------|--------|
| Rated current (cUR) | Wire connection cross section AWG | AWG 10 |
| | Rated current | 8 A |
| | Wire connection cross section AWG | AWG 12 |
| | Rated current | 8 A |
| | Wire connection cross section AWG | AWG 14 |
| | Rated current | 8 A |
| | Wire connection cross section AWG | AWG 16 |
| | Rated current | 8 A |
| | Wire connection cross section AWG | AWG 18 |
| | Rated current | 8 A |
| | Wire connection cross section AWG | AWG 20 |
| | Rated current | 8 A |
| Rated impulse voltage (DIN EN 61984) | 6 kV | |
| Rated voltage (DIN EN 61984) | 400 V | |
| Rated voltage according to UL/CSA | 600 V AC/DC | |
| Series | HSB | |
| Size | 6 | |
| Surface finish | Silver passivated | |
| Type | Female | |
| Type of connection | Screw connection | |
| UL 94 flammability rating | V-0 | |
| Volume resistance | ≤2 mΩ | |

Connection data PE

| | | | |
|---------------------------------------|---------|---------------------------------------|-------------------|
| Blade size, slotted (PE connection) | 1 x 5.5 | Connection type PE | Screw connection |
| Fixing screw | M 5 | Rated cross-section | 6 mm ² |
| Stripping length PE connection | 10 mm | Tightening torque, max. PE connection | 2.5 Nm |
| Tightening torque, min. PE connection | 2 Nm | Wire cross section, AWG (PE), max. | AWG 10 |
| Wire cross section, AWG (PE), min. | AWG 20 | | |

Version

| | | | |
|---|-------------------|---|---------------------|
| BG | 6 | Blade size | size PZ 1 |
| Blade size, slotted (screw connection) | SD 0.8 x 4.0 | Clamping screw | M 4 |
| Conductor cross-section, max. | 6 mm ² | Conductor cross-section, min. | 0.5 mm ² |
| Material | Copper alloy | Max. torque for main contact | 1.5 Nm |
| Min. torque for main contact | 1.2 Nm | Size | 6 |
| Stripping length, rated connection | 11 mm | Surface finish | Silver passivated |
| Type of connection | Screw connection | Volume resistance | ≤2 mΩ |
| Wire connection cross section AWG, max. | AWG 10 | Wire connection cross section AWG, min. | AWG 20 |
| Wire connection cross section, finely stranded, max. | 6 mm ² | Wire connection cross section, finely stranded, min. | 0.5 mm ² |
| Wire connection cross-section, finely stranded with wire-end ferrules DIN 46228/4, max. | 6 mm ² | Wire connection cross-section, finely stranded with wire-end ferrules DIN 46228/4, min. | 0.5 mm ² |
| Wire cross-section, solid, max. | 6 mm ² | Wire cross-section, solid, min. | 0.5 mm ² |

Classifications

| | | | |
|-------------|-------------|-------------|-------------|
| ETIM 6.0 | EC000438 | ETIM 7.0 | EC000438 |
| ETIM 8.0 | EC000438 | ETIM 9.0 | EC000438 |
| ECLASS 9.0 | 27-44-02-05 | ECLASS 9.1 | 27-44-02-05 |
| ECLASS 10.0 | 27-44-02-05 | ECLASS 11.0 | 27-44-02-05 |
| ECLASS 12.0 | 27-44-02-05 | ECLASS 13.0 | 27-44-02-05 |
| ECLASS 14.0 | 27-44-02-05 | | |

Creation date October 5, 2024 2:45:09 AM CEST

Catalogue status 28.09.2024 / We reserve the right to make technical changes.

HDC HSB 6 FS 7 - 12

Weidmüller Interface GmbH & Co. KG

Klingenbergstraße 26

D-32758 Detmold

Germany

www.weidmueller.com

Technical data

| | |
|---------------------|---------------------------|
| Substance | Acetone |
| Chemical resistance | Resistant |
| Substance | Ammonia, watery |
| Chemical resistance | Conditionally resistant |
| Substance | Petrol |
| Chemical resistance | Resistant |
| Substance | Benzene |
| Chemical resistance | Resistant |
| Substance | Diesel oil |
| Chemical resistance | Conditionally resistant |
| Substance | Acetic acid, concentrated |
| Chemical resistance | Resistant |
| Substance | Potassium hydroxide |
| Chemical resistance | Conditionally resistant |
| Substance | Methanol |
| Chemical resistance | Conditionally resistant |
| Substance | Motor oil |
| Chemical resistance | Conditionally resistant |
| Substance | Lye, diluted |
| Chemical resistance | Resistant |
| Substance | Hydrochlorofluorocarbons |
| Chemical resistance | Conditionally resistant |
| Substance | Outdoor use |
| Chemical resistance | Conditionally resistant |

Environmental Product Compliance

| | |
|--------------------------------------|---|
| REACH SVHC | Lead 7439-92-1 Potassium perfluorobutane sulfonate 29420-49-3 |
| SCIP | e98b2b24-ba23-41bf-8d19-Odda3647412f |
| Chemical resistance | de.myview.objectmodel.impl.BlockImpl@31197230 de.myview.objectmodel.impl.BlockImpl@3e4f3eb0 de.myview.objectmodel.impl.BlockImpl@4edb0bfa de.myview.objectmodel.impl.BlockImpl@3de29c39 de.myview.objectmodel.impl.BlockImpl@4790f147 de.myview.objectmodel.impl.BlockImpl@6dfd8bb de.myview.objectmodel.impl.BlockImpl@16ffa297 de.myview.objectmodel.impl.BlockImpl@3f55f725 de.myview.objectmodel.impl.BlockImpl@7f8f3341 de.myview.objectmodel.impl.BlockImpl@1060992e de.myview.objectmodel.impl.BlockImpl@7b606aaf de.myview.objectmodel.impl.BlockImpl@6b9c4639 |
| RoHS Compliance Status | Compliant with exemption |
| RoHS Exemption (if applicable/known) | 6c |

HDC HSB 6 FS 7 - 12

Weidmüller Interface GmbH & Co. KG

Klingenbergstraße 26

D-32758 Detmold

Germany

www.weidmueller.com

Technical data

Approvals

Approvals



ROHS Conform

UL File Number Search UL Website

Certificate No. (cURus) E92202

Downloads

Approval/Certificate/Document of Con-
formity[Manufacturer's declaration](#)

Engineering Data

[CAD data – STEP](#)

Catalogues

[Catalogues in PDF-format](#)

Brochures

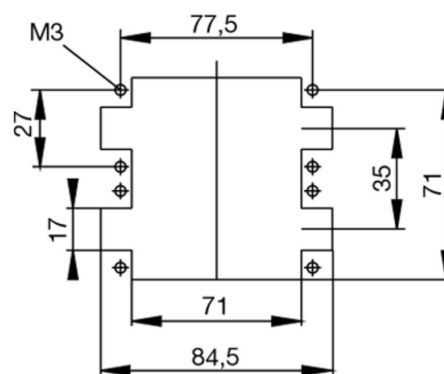
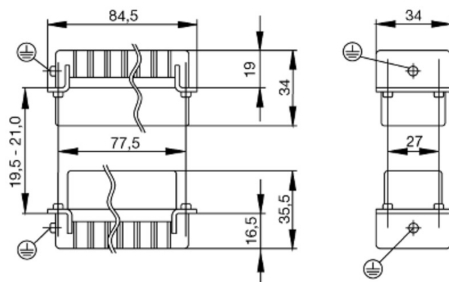
[FL FIELDWIRING EN](#)
[FL FIELDWIRING EN](#)

HDC HSB 6 FS 7 - 12

Weidmüller Interface GmbH & Co. KG
Klingenbergstraße 26
D-32758 Detmold
Germany

www.weidmueller.com

Drawings



HDC HSB 6 FS 7 - 12**Weidmüller Interface GmbH & Co. KG**

Klingenbergstraße 26

D-32758 Detmold

Germany

www.weidmueller.com**Accessories****Slotted screwdriver**

VDE insulated slot-head screwdriver, SDI DIN 7437, ISO 2380/2, drive output acc. to DIN 5264, ISO 2380/1. SoftFinish grip

General ordering data

| | | |
|------------|----------------------------|--------------------------|
| Type | SDIS 0.6X3.5X100 | Version |
| Order No. | 9008390000 | Screwdriver, Screwdriver |
| GTIN (EAN) | 4032248056354 | |
| Qty. | 1 pc(s). | |
| Type | SDIS 0.8X4.0X100 | Version |
| Order No. | 9008400000 | Screwdriver, Screwdriver |
| GTIN (EAN) | 4032248056361 | |
| Qty. | 1 pc(s). | |
| Type | SDIS 1.0X5.5X125 | Version |
| Order No. | 9008410000 | Screwdriver, Screwdriver |
| GTIN (EAN) | 4032248056378 | |
| Qty. | 1 pc(s). | |

DSTV

Various accessories are available for our inserts. This includes coding elements for the inserts.

General ordering data

| | | |
|------------|----------------------------|--|
| Type | DSTV COST4 | Version |
| Order No. | 1471300000 | Heavy-duty connectors, Accessories, Coding System |
| GTIN (EAN) | 4008190017354 | |
| Qty. | 100 pc(s). | |
| Type | DSTV COBU5 | Version |
| Order No. | 1471500000 | Heavy-duty connectors, Accessories, Coding element |
| GTIN (EAN) | 4008190178543 | |
| Qty. | 100 pc(s). | |

HDC HSB 6 FS 7 - 12**Weidmüller Interface GmbH & Co. KG**

Klingenbergstraße 26

D-32758 Detmold

Germany

www.weidmueller.com**Accessories****Crosshead screwdriver Pozidriv**

Crosshead screwdriver, Pozidriv, SDK PZ DIN 5262, ISO 8764/2-PZ, output to ISO 8764/1-PZ, ChromTop tip, SoftFinish grip

General ordering data

| | | |
|------------|----------------------------|--------------------------|
| Type | SDK PZ2 | Version |
| Order No. | 9008540000 | Screwdriver, Screwdriver |
| GTIN (EAN) | 4032248056538 | |
| Qty. | 1 pc(s). | |
| Type | SDK PZ1 | Version |
| Order No. | 9008530000 | Screwdriver, Screwdriver |
| GTIN (EAN) | 4032248056521 | |
| Qty. | 1 pc(s). | |

Crosshead screwdriver Pozidriv

VDE insulated crosshead screwdriver type Pozidriv SDIK PZ DIN 7438, ISO 8764/2-PZ, output to ISO 8764-PZ, SoftFinish grip

General ordering data

| | | |
|------------|----------------------------|--------------------------|
| Type | SDIK PZ1 | Version |
| Order No. | 9008900000 | Screwdriver, Screwdriver |
| GTIN (EAN) | 4032248266685 | |
| Qty. | 1 pc(s). | |
| Type | SDIK PZ2 | Version |
| Order No. | 9008890000 | Screwdriver, Screwdriver |
| GTIN (EAN) | 4032248266661 | |
| Qty. | 1 pc(s). | |

HDC HSB 6 FS 7 - 12**Weidmüller Interface GmbH & Co. KG**

Klingenbergstraße 26

D-32758 Detmold

Germany

www.weidmueller.com**Accessories****Slotted screwdriver**

Slotted screwdriver with rounded blade SD DIN 5265,
ISO 2380/2, output to DIN 5264, ISO 2380/1.
ChromTop tip, SoftFinish grip

General ordering data

| | | |
|------------|----------------------------|--------------------------|
| Type | SDS 0.6X3.5X100 | Version |
| Order No. | 9008330000 | Screwdriver, Screwdriver |
| GTIN (EAN) | 4032248056286 | |
| Qty. | 1 pc(s). | |
| Type | SDS 0.8X4.5X125 | Version |
| Order No. | 9009020000 | Screwdriver, Screwdriver |
| GTIN (EAN) | 4032248266883 | |
| Qty. | 1 pc(s). | |
| Type | SDS 1.0X5.5X150 | Version |
| Order No. | 9008350000 | Screwdriver, Screwdriver |
| GTIN (EAN) | 4032248056316 | |
| Qty. | 1 pc(s). | |

Tightening torques and screwing tools

| Screw size | Connector type | Dia. tightening torque in Nm | Recommended blade inserts and AF size for hexagon socket |
|--------------------|---|---|--|
| M 2.5 | Signal contacts | | |
| | S 6/6 | 0.5 - 0.55 | SD 0.6 x 3.5 mm or PZ0 |
| | S 6/12 | 0.5 - 0.55 | SD 0.6 x 3.5 mm or PZ0 |
| M 2.9 x 0.5 | Fastening screws | | |
| | HQ 4/2 | 0.8 (plastic) / 1.1 (metal) | SD 0.6 x 3.5 mm or PH0 |
| | HQ 8 | 0.8 (plastic) / 1.1 (metal) | SD 0.6 x 3.5 mm or PH0 |
| | HQ 17 | 0.8 (plastic) / 1.1 (metal) | SD 0.6 x 3.5 mm or PH0 |
| M 3 | Contact screws | | |
| | HA 3 | 0.5 - 0.55 | SD 0.5 x 3.0 mm |
| | HA 4 | 0.5 - 0.55 | SD 0.5 x 3.0 mm |
| | HA 10 bis HA 48 | 0.5 - 0.55 | SD 0.6 x 3.5 mm or PH0 |
| | HE | 0.5 - 0.55 | SD 0.6 x 3.5 mm or PZ0 |
| | HVE | 0.5 - 0.55 | SD 0.6 x 3.5 mm or PZ0 |
| | Signal contacts: | | |
| | S 4/2 | 0.5 - 0.55 | SD 0.6 x 3.5 mm or PZ0 |
| | S 4/8 | 0.5 - 0.55 | SD 0.6 x 3.5 mm or PZ0 |
| | PE connection via female contact | | |
| | S 4 | 0.5 - 0.8 | SD 0.6 x 3.5 mm |
| | ConCept modular frame, metal | 0.5 - 0.55 | SD 0.6 x 3.5 mm |
| | PE terminal | | |
| | HQ 5 | 0.5 - 0.55 | SD 0.6 x 3.5 or 0.8 x 4 mm |
| | HQ 7 | 0.5 - 0.55 | SD 0.6 x 3.5 or 0.8 x 4 mm |
| | Fastening screws | 0.5 - 0.55 | SD 0.6 x 3.5 mm or PZ0 |
| | Guide pin | 0.5 - 0.55 | SD 0.6 x 3.5 mm or PZ0 |
| | Guide bush | 0.5 - 0.55 | SD 0.6 x 3.5 mm or PZ0 |
| | Coding pins | 0.5 - 0.55 | SD 0.6 x 3.5 mm or PZ0 |
| M 4 | Contact screws | | |
| | HSB | 1.2 - 1.5 | SD 0.6 x 3.5 or 0.8 x 4 mm or PZ1 |
| | PE connection via male contact | | |
| | S 4 | 0.5 - 0.8 | SD 0.6 x 3.5 mm |
| | ConCept modular frame, metal | 1.2 - 1.5 | SD 0.6 x 3.5 mm |
| | PE terminal | | |
| | HA | 1.2 - 1.5 | SD 0.6 x 3.5 or 0.8 x 4 mm or PH1 |
| | HE | 1.2 - 1.5 | SD 0.6 x 3.5 or 0.8 x 4 mm or PH1 |
| | HEE | 1.2 - 1.5 | SD 0.6 x 3.5 or 0.8 x 4 mm or PH1 |
| | HVE | 1.2 - 1.5 | SD 0.6 x 3.5 or 0.8 x 4 mm or PH1 |
| | HD | 1.2 - 1.5 | SD 0.6 x 3.5 or 0.8 x 4 mm or PZ1 |
| | HDD | 1.2 - 1.5 | SD 0.6 x 3.5 or 0.8 x 4 mm or PZ1 |
| | S 6/6 (for signal contacts) | 1.2 - 1.5 | 0.8 x 4 mm or PZ1 |
| | ConCept modular frame, plastic | 1.2 - 1.5 | 0.8 x 4 mm or PZ1 |
| M 5 | PE terminal | | |
| | HSB | 2 - 2.5 | SD 1 x 5.5 mm or PZ2 |
| | S 4/0 (Screw connection) | 2 - 2.5 | SD 1.2 x 6.5 mm or PH2 |
| | S 4/0 (Axial screw connection) | 2 - 2.5 | SD 0.8 x 4 mm or PZ 2 |
| | S 4/2 | 2 - 2.5 | SD 1.2 x 6.5 mm or PH2 |
| | S 4/8 | 2 - 2.5 | SD 1.2 x 6.5 mm or PH2 |
| | S 6/12 | 2 - 2.5 | SD 0.8 x 4 mm or PZ 2 |
| | S 6/36 | 2 - 2.5 | SD 1.2 x 6.5 mm or PH2 |
| | S 8/24 | 2 - 2.5 | SD 1.2 x 6.5 mm or PH2 |
| | S 12/2 | 2 - 2.5 | SD 1.2 x 6.5 mm or PH2 |
| M 6 | Power contacts | | |
| | S 4/0 (Screw connection) | 1.2 (1.5 mm ²) / 2 (2.5 mm ²) / 3 (4-16 mm ²) | SD 0.8 x 4 mm |
| | S 4/2 | 1.2 (1.5 mm ²) / 2 (2.5 mm ²) / 3 (4-16 mm ²) | SD 0.8 x 4 mm |
| | S 4/8 | 1.2 (1.5 mm ²) / 2 (2.5 mm ²) / 3 (4-16 mm ²) | SD 0.8 x 4 mm |
| M 7 x 0.75 | Power contacts | | |
| | S 4 | 1.1 - 1.7 | SW 2 |
| | S 6/6 (+ PE) | 6 - 8 | SW 4 |
| M 8 x 0.75 | Power contacts | | |
| | S 6/12 | 1.1 - 1.7 | SW 2 |
| | S 8/0 (+ PE) | 6 (10-16 mm ²) - 7 (25 mm ²) | SW 4 |
| M10 x 1 | Power contacts | | |
| | S 4/0 (Axial connection) | 2 - 3 | SW 3 |

Increasing the tightening torque does not improve the contact resistance. The stated torque settings offer optimal mechanical, thermal and electrical conditions. Exceeding the recommended values may even damage the conductor and terminal.