

KWPN-M12/-50 90**Weidmüller Interface GmbH & Co. KG**

Klingenbergstraße 26

D-32758 Detmold

Germany

www.weidmueller.com

The use of insulated connectors guarantees users consistent electrical connection quality in the long term.

- Wide range of insulated and non-insulated cable lugs and connectors
- Tubular cable lugs according to current market standards (Euroseries)
- Compression cable lugs acc. to DIN 46235
- Sheet metal cable lugs acc. to DIN 46234
- Insulated ring cable lugs to DIN 46237
- Insulated pin cable lugs to DIN 46231

General ordering data

| | |
|------------|---|
| Version | cable lug, terminal end, 50 mm ² |
| Order No. | 1497620000 |
| Type | KWPN-M12/-50 90 |
| GTIN (EAN) | 4050118306675 |
| Qty. | 100 pc(s). |

KWPN-M12/-50 90**Weidmüller Interface GmbH & Co. KG**

Klingenbergstraße 26

D-32758 Detmold

Germany

www.weidmueller.com**Technical data****Dimensions and weights**

| | |
|------------|----------|
| Net weight | 50.322 g |
|------------|----------|

Technical data

| | |
|---------|-----------------------|
| Version | DIN series 46235, 90° |
|---------|-----------------------|

Connectors

| | | | |
|--------------------------------|--------------------|--------------------------------|---------|
| Conductor cross-section | 50 mm ² | Connection length (l) | 22.8 mm |
| Flange width (b) | 24 mm | Hole | M 12 |
| Inside diameter of flange (d2) | 13 mm | Inside diameter of shaft (d1) | 9.8 mm |
| Insulation | not available | Outside diameter of shaft (d3) | 14.5 mm |
| Shaft length (a) | 28 mm | | |

Classifications

| | | | |
|-------------|-------------|-------------|-------------|
| ETIM 6.0 | EC001050 | ETIM 7.0 | EC001050 |
| ETIM 8.0 | EC001050 | ETIM 9.0 | EC001050 |
| ECLASS 9.0 | 27-40-02-03 | ECLASS 9.1 | 27-40-02-03 |
| ECLASS 10.0 | 27-40-02-03 | ECLASS 11.0 | 27-40-02-03 |
| ECLASS 12.0 | 27-40-02-03 | ECLASS 13.0 | 27-40-02-03 |

Environmental Product Compliance

| | |
|------------------------|-----------------------------|
| REACH SVHC | / |
| RoHS Compliance Status | Compliant without exemption |

Approvals

| | |
|------|---------|
| ROHS | Conform |
|------|---------|

Downloads

| | |
|------------|--|
| Catalogues | Catalogues in PDF-format |
|------------|--|

KWPN-M12/-50 90

Weidmüller Interface GmbH & Co. KG
Klingenbergstraße 26
D-32758 Detmold
Germany

www.weidmueller.com

Drawings



KWPN-M12/-50 90

Weidmüller Interface GmbH & Co. KG

Klingenbergstraße 26

D-32758 Detmold

Germany

www.weidmueller.com

Accessories

Crimping tool for tubular (EN 13600) and compression cable lugs (DIN 46235)



Crimping tools for tubular and compression cable lugs with swivel crimping star.

- Integrated crimping star for different cross-sections
- Hexagon crimping tools for compression cable lugs
- WM-From crimping tools for tubular cable lugs
- wide processing range up to 70 or 120 mm²

General ordering data

| | | |
|------------|----------------------------|--|
| Type | PZ PK 6/70 | Version |
| Order No. | 1500470000 | 6mm ² , 70mm ² |
| GTIN (EAN) | 4050118309263 | |
| Qty. | 1 pc(s). | |
| Type | PZ PK 10/120 | Version |
| Order No. | 1500480000 | 10mm ² , 120mm ² |
| GTIN (EAN) | 4050118309089 | |
| Qty. | 1 pc(s). | |

... for compression cable lugs (acc. to DIN 46235)



Crimping tools for cable lugs, connectors and wire-end ferrules with interchangeable inserts

- extremely fast processing thanks to hydraulic support
- large processing range up to 400 mm²
- 360° revolving quick action crimping head
- automatic pressure limitation and monitoring via pressure sensor
- Additional features for APG series:
- electronic control and monitoring of the crimping process
- Saving of all crimping cycles and error messages to internal memory
- Reading of all cycles and error messages via USB

General ordering data

| | | |
|------------|----------------------------|-----------------|
| Type | ES APG 80 HEX 50 | Version |
| Order No. | 1502670000 | Hexagonal crimp |
| GTIN (EAN) | 4050118310559 | |
| Qty. | 1 pc(s). | |

KWPN-M12/-50 90

Weidmüller Interface GmbH & Co. KG

Klingenbergstraße 26

D-32758 Detmold

Germany

www.weidmueller.com

Accessories

... for compression cable lugs

**Crimping tools for cable lugs, connectors and wire-end ferrules with interchangeable inserts**

- extremely fast processing thanks to hydraulic support
- large processing range up to 300 mm²
- 270° revolving quick-action crimping head
- automatic pressure limitation and monitoring via pressure sensor
- electronic control and monitoring of the crimping process
- Saving of all crimping cycles and error messages to internal memory
- Reading of all cycles and error messages via USB
- Li-ion rechargeable battery with charge status indicator: 18 V, 2 Ah

General ordering data

| | | |
|------------|----------------------------|---------------------------------------|
| Type | ES EPG/HPG 60 HEX 50 | Version |
| Order No. | 2505200000 | Crimping tool insert, Hexagonal crimp |
| GTIN (EAN) | 4050118519600 | |
| Qty. | 1 pc(s). | |

... for tubular cable lugs (acc. to EN 13600)

**Crimping tools for cable lugs, connectors and wire-end ferrules with interchangeable inserts**

- extremely fast processing thanks to hydraulic support
- large processing range up to 300 mm²
- 270° revolving quick-action crimping head
- automatic pressure limitation and monitoring via pressure sensor
- electronic control and monitoring of the crimping process
- Saving of all crimping cycles and error messages to internal memory
- Reading of all cycles and error messages via USB
- Li-ion rechargeable battery with charge status indicator: 18 V, 2 Ah

General ordering data

| | | |
|------------|----------------------------|----------|
| Type | ES EPG 45 WM 25/50 | Version |
| Order No. | 1500880000 | WM crimp |
| GTIN (EAN) | 4050118309171 | |
| Qty. | 1 pc(s). | |

KWPN-M12/-50 90

Weidmüller Interface GmbH & Co. KG

Klingenbergstraße 26

D-32758 Detmold

Germany

www.weidmueller.com

Accessories

... for compression cable lugs (acc. to DIN 46235)

**Crimping tools for cable lugs, connectors and wire-end ferrules with interchangeable inserts**

- extremely fast processing thanks to hydraulic support
- large processing range up to 300 mm²
- 270° revolving quick-action crimping head
- automatic pressure limitation and monitoring via pressure sensor
- electronic control and monitoring of the crimping process
- Saving of all crimping cycles and error messages to internal memory
- Reading of all cycles and error messages via USB
- Li-ion rechargeable battery with charge status indicator: 18 V, 2 Ah

General ordering data

| | | |
|------------|----------------------------|-----------------|
| Type | ES EPG 45 HEX 25/50 | Version |
| Order No. | 1500970000 | Hexagonal crimp |
| GTIN (EAN) | 4050118309195 | |
| Qty. | 1 pc(s). | |

Tools**Crimping tools for cable lugs, connectors and wire-end ferrules with interchangeable inserts**

- extremely fast processing thanks to hydraulic support
- large processing range up to 300 mm²
- 270° revolving quick-action crimping head
- automatic pressure limitation and monitoring via pressure sensor
- electronic control and monitoring of the crimping process
- Saving of all crimping cycles and error messages to internal memory
- Reading of all cycles and error messages via USB
- Li-ion rechargeable battery with charge status indicator: 18 V, 2 Ah

General ordering data

| | | |
|------------|----------------------------|--|
| Type | EPG 45 | Version |
| Order No. | 1500830000 | Pressing tool, 6mm ² , 150mm ² , Hexagonal crimp, WM crimp, Indent crimp, Trapezoidal crimp, Oval crimping |
| GTIN (EAN) | 4050118309317 | |
| Qty. | 1 pc(s). | |

| | | |
|------------|----------------------------|---|
| Type | EPG 60 | Version |
| Order No. | 2453810000 | Pressing tools, Tools, Pressing tool, 6mm ² , 300mm ² , Hexagonal crimp, WM crimp, Indent crimp, Trapezoidal crimp, Oval crimping |
| GTIN (EAN) | 4050118468434 | |
| Qty. | 1 pc(s). | |

KWPN-M12/-50 90

Weidmüller Interface GmbH & Co. KG

Klingenbergstraße 26

D-32758 Detmold

Germany

www.weidmueller.com

Accessories

... for tubular cable lugs (acc. to EN 13600)

**Crimping tools for cable lugs, connectors and wire-end ferrules with interchangeable inserts**

- extremely fast processing thanks to hydraulic support
- large processing range up to 400 mm²
- 360° revolving quick action crimping head
- automatic pressure limitation and monitoring via pressure sensor
- Additional features for APG series:
- electronic control and monitoring of the crimping process
- Saving of all crimping cycles and error messages to internal memory
- Reading of all cycles and error messages via USB

General ordering data

| | | |
|------------|----------------------------|------------------------------|
| Type | ES APG 80 WM 50 | Version |
| Order No. | 1502500000 | 50mm ² , WM crimp |
| GTIN (EAN) | 4050118310658 | |
| Qty. | 1 pc(s). | |

Tools**Crimping tools for cable lugs, connectors and wire-end ferrules with interchangeable inserts**

- extremely fast processing thanks to hydraulic support
- large processing range up to 400 mm²
- 360° revolving quick action crimping head
- automatic pressure limitation and monitoring via pressure sensor
- Additional features for APG series:
- electronic control and monitoring of the crimping process
- Saving of all crimping cycles and error messages to internal memory
- Reading of all cycles and error messages via USB

General ordering data

| | | |
|------------|----------------------------|--|
| Type | HPG 60 | Version |
| Order No. | 2453820000 | 6mm ² , 300mm ² , Hexagonal crimp, WM crimp, Indent crimp, |
| GTIN (EAN) | 4050118468427 | Trapezoidal crimp, Oval crimping |
| Qty. | 1 pc(s). | |

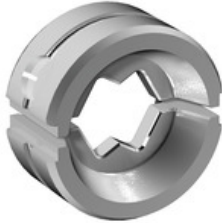
| | | |
|------------|----------------------------|---------------------------------------|
| Type | APG 80 | Version |
| Order No. | 1502390000 | 6mm ² , 400mm ² |
| GTIN (EAN) | 4050118310627 | |
| Qty. | 1 pc(s). | |

KWPN-M12/-50 90**Weidmüller Interface GmbH & Co. KG**

Klingenbergstraße 26

D-32758 Detmold

Germany

www.weidmueller.com**Accessories****... for tubular cable lugs****Crimping tools for cable lugs, connectors and wire-end ferrules with interchangeable inserts**

- extremely fast processing thanks to hydraulic support
- large processing range up to 300 mm²
- 270° revolving quick-action crimping head
- automatic pressure limitation and monitoring via pressure sensor
- electronic control and monitoring of the crimping process
- Saving of all crimping cycles and error messages to internal memory
- Reading of all cycles and error messages via USB
- Li-ion rechargeable battery with charge status indicator: 18 V, 2 Ah

General ordering data

| | | |
|------------|----------------------------|--------------------------------|
| Type | ES EPG/HPG 60 WM 50 | Version |
| Order No. | 2469580000 | Crimping tool insert, WM crimp |
| GTIN (EAN) | 4050118483864 | |
| Qty. | 1 pc(s). | |