

KWPN-M12/-300 90**Weidmüller Interface GmbH & Co. KG**

Klingenbergstraße 26

D-32758 Detmold

Germany

www.weidmueller.com

The use of insulated connectors guarantees users consistent electrical connection quality in the long term.

- Wide range of insulated and non-insulated cable lugs and connectors
- Tubular cable lugs according to current market standards (Euroseries)
- Compression cable lugs acc. to DIN 46235
- Sheet metal cable lugs acc. to DIN 46234
- Insulated ring cable lugs to DIN 46237
- Insulated pin cable lugs to DIN 46231

General ordering data

Version	cable lug, terminal end, 300 mm ²
Order No.	1496770000
Type	KWPN-M12/-300 90
GTIN (EAN)	4050118306415
Qty.	10 pc(s).

KWPN-M12/-300 90**Weidmüller Interface GmbH & Co. KG**

Klingenbergstraße 26

D-32758 Detmold

Germany

www.weidmueller.com**Technical data****Dimensions and weights**

Net weight	293.51 g
------------	----------

Technical data

Version	DIN series 46235, 90°
---------	-----------------------

Connectors

Conductor cross-section	300 mm ²	Connection length (l)	32 mm
Flange width (b)	48.5 mm	Hole	M 12
Inside diameter of flange (d2)	13 mm	Inside diameter of shaft (d1)	24.5 mm
Insulation	not available	Outside diameter of shaft (d3)	32 mm
Shaft length (a)	50 mm		

Classifications

ETIM 6.0	EC001050	ETIM 7.0	EC001050
ETIM 8.0	EC001050	ETIM 9.0	EC001050
ECLASS 9.0	27-40-02-03	ECLASS 9.1	27-40-02-03
ECLASS 10.0	27-40-02-03	ECLASS 11.0	27-40-02-03
ECLASS 12.0	27-40-02-03	ECLASS 13.0	27-40-02-03

Approvals

ROHS	Conform
------	---------

Downloads

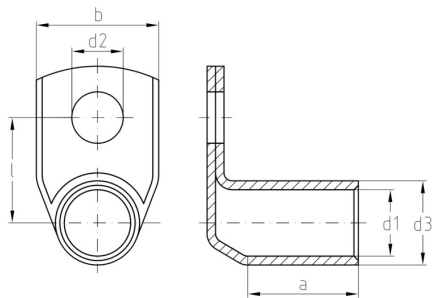
Catalogues	Catalogues in PDF-format
------------	--

KWPN-M12/-300 90

Weidmüller Interface GmbH & Co. KG
Klingenbergstraße 26
D-32758 Detmold
Germany

www.weidmueller.com

Drawings



KWPN-M12/-300 90

Weidmüller Interface GmbH & Co. KG

Klingenbergstraße 26

D-32758 Detmold

Germany

www.weidmueller.com

Accessories

... for tubular cable lugs (acc. to EN 13600)

**Crimping tools for cable lugs, connectors and wire-end ferrules with interchangeable inserts**

- extremely fast processing thanks to hydraulic support
- large processing range up to 400 mm²
- 360° revolving quick action crimping head
- automatic pressure limitation and monitoring via pressure sensor
- Additional features for APG series:
- electronic control and monitoring of the crimping process
- Saving of all crimping cycles and error messages to internal memory
- Reading of all cycles and error messages via USB

General ordering data

Type	ES APG 80 WM 300	Version
Order No.	1502590000	300mm ² , WM crimp
GTIN (EAN)	4050118310511	
Qty.	1 pc(s).	

... for compression cable lugs (acc. to DIN 46235)

**Crimping tools for cable lugs, connectors and wire-end ferrules with interchangeable inserts**

- extremely fast processing thanks to hydraulic support
- large processing range up to 400 mm²
- 360° revolving quick action crimping head
- automatic pressure limitation and monitoring via pressure sensor
- Additional features for APG series:
- electronic control and monitoring of the crimping process
- Saving of all crimping cycles and error messages to internal memory
- Reading of all cycles and error messages via USB

General ordering data

Type	ES APG 80 HEX 300	Version
Order No.	1502750000	Hexagonal crimp
GTIN (EAN)	4050118310962	
Qty.	1 pc(s).	

KWPN-M12/-300 90**Weidmüller Interface GmbH & Co. KG**

Klingenbergstraße 26

D-32758 Detmold

Germany

www.weidmueller.com**Accessories****Tools****Crimping tools for cable lugs, connectors and wire-end ferrules with interchangeable inserts**

- extremely fast processing thanks to hydraulic support
- large processing range up to 400 mm²
- 360° revolving quick action crimping head
- automatic pressure limitation and monitoring via pressure sensor
- Additional features for APG series:
- electronic control and monitoring of the crimping process
- Saving of all crimping cycles and error messages to internal memory
- Reading of all cycles and error messages via USB

General ordering data

Type	APG 80	Version
Order No.	1502390000	6mm ² , 400mm ²
GTIN (EAN)	4050118310627	
Qty.	1 pc(s).	