

KWN-M10/-35 45**Weidmüller Interface GmbH & Co. KG**

Klingenbergstraße 26

D-32758 Detmold

Germany

www.weidmueller.com

The use of insulated connectors guarantees users consistent electrical connection quality in the long term.

- Wide range of insulated and non-insulated cable lugs and connectors
- Tubular cable lugs according to current market standards (Euroseries)
- Compression cable lugs acc. to DIN 46235
- Sheet metal cable lugs acc. to DIN 46234
- Insulated ring cable lugs to DIN 46237
- Insulated pin cable lugs to DIN 46231

General ordering data

| | |
|------------|---|
| Version | cable lug, terminal end, 35 mm ² |
| Order No. | 1496240000 |
| Type | KWN-M10/-35 45 |
| GTIN (EAN) | 4050118306217 |
| Qty. | 50 pc(s). |

KWN-M10/-35 45**Weidmüller Interface GmbH & Co. KG**

Klingenbergstraße 26

D-32758 Detmold

Germany

www.weidmueller.com**Technical data****Dimensions and weights**

| | |
|------------|--------|
| Net weight | 23.4 g |
|------------|--------|

Technical data

| | |
|---------|------------------|
| Version | Euro series, 45° |
|---------|------------------|

Connectors

| | | | |
|--------------------------------|--------------------|--------------------------------|---------------|
| Conductor cross-section | 35 mm ² | Flange width (b) | 20 mm |
| Hole | M10 | Inside diameter of flange (d2) | 10.5 mm |
| Inside diameter of shaft (d1) | 8.5 mm | Insulation | not available |
| Outside diameter of shaft (d3) | 12 mm | Shaft length (a) | 16 mm |

Classifications

| | | | |
|-------------|-------------|-------------|-------------|
| ETIM 6.0 | EC001051 | ETIM 7.0 | EC001051 |
| ETIM 8.0 | EC001051 | ETIM 9.0 | EC001051 |
| ECLASS 9.0 | 27-40-02-05 | ECLASS 9.1 | 27-40-02-05 |
| ECLASS 10.0 | 27-40-02-05 | ECLASS 11.0 | 27-40-02-05 |
| ECLASS 12.0 | 27-40-02-05 | ECLASS 13.0 | 27-40-02-05 |

Approvals

| | |
|------|---------|
| ROHS | Conform |
|------|---------|

Downloads

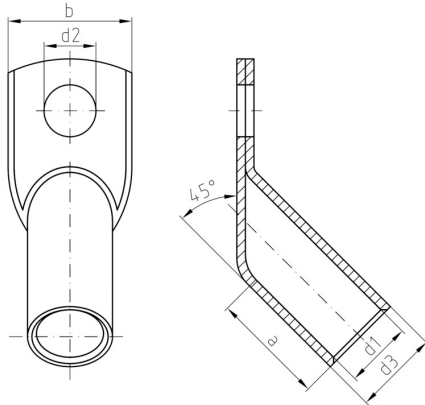
| | |
|------------|--|
| Catalogues | Catalogues in PDF-format |
| Brochures | |

KWN-M10/-35 45

Weidmüller Interface GmbH & Co. KG
Klingenbergstraße 26
D-32758 Detmold
Germany

www.weidmueller.com

Drawings



KWN-M10/-35 45

Weidmüller Interface GmbH & Co. KG

Klingenbergstraße 26

D-32758 Detmold

Germany

www.weidmueller.com

Accessories

... for tubular cable lugs (acc. to EN 13600)

**Crimping tools for cable lugs, connectors and wire-end ferrules with interchangeable inserts**

- extremely fast processing thanks to hydraulic support
- large processing range up to 300 mm²
- 270° revolving quick-action crimping head
- automatic pressure limitation and monitoring via pressure sensor
- electronic control and monitoring of the crimping process
- Saving of all crimping cycles and error messages to internal memory
- Reading of all cycles and error messages via USB
- Li-ion rechargeable battery with charge status indicator: 18 V, 2 Ah

General ordering data

| | | |
|------------|----------------------------|----------|
| Type | ES EPG 45 WM 16/35 | Version |
| Order No. | 1500920000 | WM crimp |
| GTIN (EAN) | 4050118309478 | |
| Qty. | 1 pc(s). | |

... for tubular cable lugs

**Crimping tools for cable lugs, connectors and wire-end ferrules with interchangeable inserts**

- extremely fast processing thanks to hydraulic support
- large processing range up to 300 mm²
- 270° revolving quick-action crimping head
- automatic pressure limitation and monitoring via pressure sensor
- electronic control and monitoring of the crimping process
- Saving of all crimping cycles and error messages to internal memory
- Reading of all cycles and error messages via USB
- Li-ion rechargeable battery with charge status indicator: 18 V, 2 Ah

General ordering data

| | | |
|------------|----------------------------|--------------------------------|
| Type | ES EPG/HPG 60 WM 35 | Version |
| Order No. | 2469570000 | Crimping tool insert, WM crimp |
| GTIN (EAN) | 4050118483826 | |
| Qty. | 1 pc(s). | |

KWN-M10/-35 45

Weidmüller Interface GmbH & Co. KG

Klingenbergstraße 26

D-32758 Detmold

Germany

www.weidmueller.com

Accessories

... for tubular cable lugs (acc. to EN 13600)

**Crimping tools for cable lugs, connectors and wire-end ferrules with interchangeable inserts**

- extremely fast processing thanks to hydraulic support
- large processing range up to 400 mm²
- 360° revolving quick action crimping head
- automatic pressure limitation and monitoring via pressure sensor
- Additional features for APG series:
- electronic control and monitoring of the crimping process
- Saving of all crimping cycles and error messages to internal memory
- Reading of all cycles and error messages via USB

General ordering data

| | | |
|------------|----------------------------|------------------------------|
| Type | ES APG 80 WM 35 | Version |
| Order No. | 1502490000 | 35mm ² , WM crimp |
| GTIN (EAN) | 4050118310597 | |
| Qty. | 1 pc(s). | |

Tools**Crimping tools for cable lugs, connectors and wire-end ferrules with interchangeable inserts**

- extremely fast processing thanks to hydraulic support
- large processing range up to 300 mm²
- 270° revolving quick-action crimping head
- automatic pressure limitation and monitoring via pressure sensor
- electronic control and monitoring of the crimping process
- Saving of all crimping cycles and error messages to internal memory
- Reading of all cycles and error messages via USB
- Li-ion rechargeable battery with charge status indicator: 18 V, 2 Ah

General ordering data

| | | |
|------------|----------------------------|--|
| Type | EPG 45 | Version |
| Order No. | 1500830000 | Pressing tool, 6mm ² , 150mm ² , Hexagonal crimp, WM crimp, Indent crimp, Trapezoidal crimp, Oval crimping |
| GTIN (EAN) | 4050118309317 | |
| Qty. | 1 pc(s). | |

| | | |
|------------|----------------------------|---|
| Type | EPG 60 | Version |
| Order No. | 2453810000 | Pressing tools, Tools, Pressing tool, 6mm ² , 300mm ² , Hexagonal crimp, WM crimp, Indent crimp, Trapezoidal crimp, Oval crimping |
| GTIN (EAN) | 4050118468434 | |
| Qty. | 1 pc(s). | |

KWN-M10/-35 45

Weidmüller Interface GmbH & Co. KG

Klingenbergstraße 26

D-32758 Detmold

Germany

www.weidmueller.com

Accessories

... for compression cable lugs (acc. to DIN 46235)

**Crimping tools for cable lugs, connectors and wire-end ferrules with interchangeable inserts**

- extremely fast processing thanks to hydraulic support
- large processing range up to 300 mm²
- 270° revolving quick-action crimping head
- automatic pressure limitation and monitoring via pressure sensor
- electronic control and monitoring of the crimping process
- Saving of all crimping cycles and error messages to internal memory
- Reading of all cycles and error messages via USB
- Li-ion rechargeable battery with charge status indicator: 18 V, 2 Ah

General ordering data

| | | |
|------------|----------------------------|-----------------|
| Type | ES EPG 45 HEX 16/35 | Version |
| Order No. | 1500950000 | Hexagonal crimp |
| GTIN (EAN) | 4050118309492 | |
| Qty. | 1 pc(s). | |

... for compression cable lugs

**Crimping tools for cable lugs, connectors and wire-end ferrules with interchangeable inserts**

- extremely fast processing thanks to hydraulic support
- large processing range up to 300 mm²
- 270° revolving quick-action crimping head
- automatic pressure limitation and monitoring via pressure sensor
- electronic control and monitoring of the crimping process
- Saving of all crimping cycles and error messages to internal memory
- Reading of all cycles and error messages via USB
- Li-ion rechargeable battery with charge status indicator: 18 V, 2 Ah

General ordering data

| | | |
|------------|----------------------------|---------------------------------------|
| Type | ES EPG/HPG 60 HEX 35 | Version |
| Order No. | 2505190000 | Crimping tool insert, Hexagonal crimp |
| GTIN (EAN) | 4050118519587 | |
| Qty. | 1 pc(s). | |

KWN-M10/-35 45

Weidmüller Interface GmbH & Co. KG

Klingenbergstraße 26

D-32758 Detmold

Germany

www.weidmueller.com

Accessories

... for compression cable lugs (acc. to DIN 46235)

**Crimping tools for cable lugs, connectors and wire-end ferrules with interchangeable inserts**

- extremely fast processing thanks to hydraulic support
- large processing range up to 400 mm²
- 360° revolving quick action crimping head
- automatic pressure limitation and monitoring via pressure sensor
- Additional features for APG series:
- electronic control and monitoring of the crimping process
- Saving of all crimping cycles and error messages to internal memory
- Reading of all cycles and error messages via USB

General ordering data

| | | |
|------------|----------------------------|-----------------|
| Type | ES APG 80 HEX 35 | Version |
| Order No. | 1502650000 | Hexagonal crimp |
| GTIN (EAN) | 4050118310696 | |
| Qty. | 1 pc(s). | |

Crimping tool for tubular (EN 13600) and compression cable lugs (DIN 46235)**Crimping tools for tubular and compression cable lugs with swivel crimping star.**

- Integrated crimping star for different cross-sections
- Hexagon crimping tools for compression cable lugs
- WM-From crimping tools for tubular cable lugs
- wide processing range up to 70 or 120 mm²

General ordering data

| | | |
|------------|----------------------------|--------------------------------------|
| Type | PZ RK 6/70 | Version |
| Order No. | 1500440000 | 6mm ² , 70mm ² |
| GTIN (EAN) | 4050118309058 | |
| Qty. | 1 pc(s). | |

| | | |
|------------|----------------------------|--|
| Type | PZ RK 10/120 | Version |
| Order No. | 1500450000 | 10mm ² , 120mm ² |
| GTIN (EAN) | 4050118309065 | |
| Qty. | 1 pc(s). | |

KWN-M10/-35 45**Weidmüller Interface GmbH & Co. KG**

Klingenbergstraße 26

D-32758 Detmold

Germany

www.weidmueller.com**Accessories****Tools****Crimping tools for cable lugs, connectors and wire-end ferrules with interchangeable inserts**

- extremely fast processing thanks to hydraulic support
- large processing range up to 400 mm²
- 360° revolving quick action crimping head
- automatic pressure limitation and monitoring via pressure sensor
- Additional features for APG series:
- electronic control and monitoring of the crimping process
- Saving of all crimping cycles and error messages to internal memory
- Reading of all cycles and error messages via USB

General ordering data

| | | |
|------------|----------------------------|--|
| Type | HPG 60 | Version |
| Order No. | 2453820000 | 6mm ² , 300mm ² , Hexagonal crimp, WM crimp, Indent crimp, |
| GTIN (EAN) | 4050118468427 | Trapezoidal crimp, Oval crimping |
| Qty. | 1 pc(s). | |
| Type | APG 80 | Version |
| Order No. | 1502390000 | 6mm ² , 400mm ² |
| GTIN (EAN) | 4050118310627 | |
| Qty. | 1 pc(s). | |